

METRO DETROIT FORD DEALERS

Are You Ready to Buy AMERICA'S BEST-SELLING TRUCKS 15 YEARS RUNNING



THE FACTS ABOUT FORD... ★ Leader in combined car and truck sales 5th straight year ★ Leader in 9 of the 15 market segments it competes in ★ Ford had 5 of the top 10 best-selling vehicles lines ★ Ford had 4 of the top 10 best-selling trucks ★ Ford has been leader in domestic quality for the last 11 years, based on 1991 competitive new vehicle quality survey of things gone wrong at three months in service ★ Ford has been leader in automotive safety for 65 years.

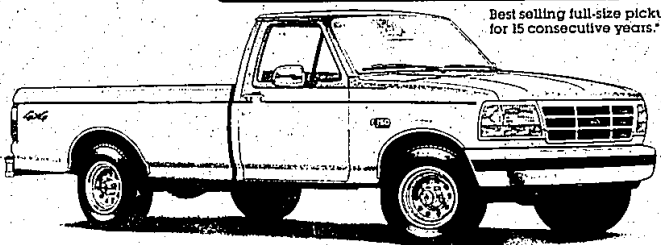


Drop in and get your...

FREE "Support America" Ribbon

*Sales claims based on 1991 calendar year manufacturers' reported retail deliveries by segment/division.

1992 FORD F-150 XL



Best selling full-size pickup for 15 consecutive years.*

7.9%
OR
\$400
CASH BONUS⁽¹⁾

A.P.R. FINANCING FOR UP TO 48 MONTHS

Combine option package savings of \$1300 with Cash Bonus⁽¹⁾ for a total value of \$1700.

Save \$1700⁽³⁾

Save \$1300⁽²⁾ when you buy Preferred Equipment Package 502A on 1992 Ford F-150 regular cab 4x2 equipped with manual transmission. Package includes: ■ 4.9L 5-Speed Manual ■ AM/FM Stereo w/Clock ■ Headliner/Insulation Package ■ Forged Aluminum Wheels ■ Cloth and Vinyl Bench Seat ■ And More...

1992 FORD RANGER XLT

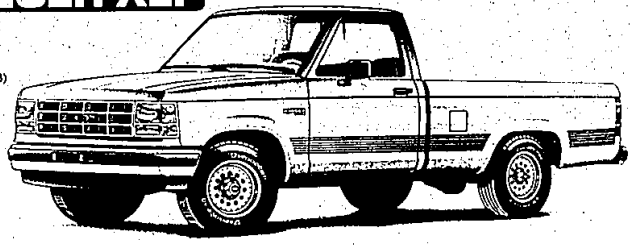
7.9%
OR
\$750
CASH BONUS⁽¹⁾

A.P.R. FINANCING FOR UP TO 48 MONTHS

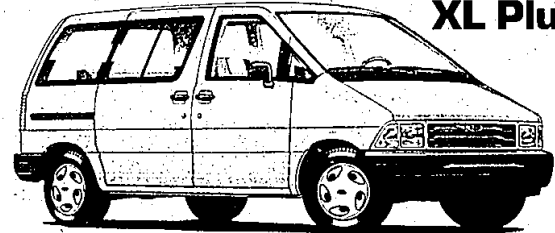
Combine option package savings of \$1918 with Cash Bonus⁽¹⁾ for a total value of \$2668.

Save \$2668⁽³⁾

Save \$1918⁽²⁾ when you buy Preferred Equipment Package 864A on 1992 Ford Ranger regular cab 4x2 equipped with manual transmission. Package includes: ■ 2.3L 5-Speed Manual ■ AM/FM Stereo ■ Power Steering ■ Chrome Rear Step Bumper ■ Sliding Rear Window ■ And More...



1992 FORD AEROSTAR XL Plus



7.9%
OR
\$1000
CASH BONUS⁽¹⁾

ANNUAL PERCENTAGE RATE FINANCING FOR UP TO 48 MONTHS

Combine option package savings of \$950 with Cash Bonus⁽¹⁾ for a total value of \$1950.

Save \$1950⁽³⁾

Save \$950⁽²⁾ when you buy Preferred Equipment Package 401A on 1992 Ford Aerostar XL Plus. Package includes: ■ 7 Passenger Seating ■ 3.0L 5-Speed Manual ■ Air Conditioning ■ Privacy Glass ■ Speed Control ■ Tilt Steering ■ And More...

(1) Cash Bonus from Ford or 7.9% Annual Percentage Rate Financing through Ford Credit for participating buyers. 48 months at 2.4% per month, per \$1000 financed with 10% down. Dealer participation may affect savings. Take new vehicle retail delivery from dealer stock by 3/31/92. See dealer for details. (2) Savings based on Manufacturer's Suggested Retail Price of Option Package vs. MSRP of options purchased separately. (3) Total savings based on Cash Bonus plus Option Package savings.

- Bloomfield Hills
ALAN FORD
1845 S. Telegraph
543-2010
- Canfield
BOB THIBODEAU
26333 Van Dyke
755-2100
- Dearborn
FAIRLANE FORD SALES
14855 Michigan Avenue
846-5000
- Wolverine Truck Sales
3550 Wyoming
849-0800
- Village Ford
23515 Michigan Avenue
565-3900
- Detroit
JORGENSEN FORD
8313 Brighton Avenue
441-2220
- Stark Hickey West
24700 W. Seven Mile Road
538-5500
- Riverside Ford Sales
1822 E. Jefferson
567-0250
- Farmington Hills
TOM HOLZER FORD
39300 W. 10 Mile Road
478-3231
- Ferndale
ED SCHMID FORD
7160 Woodward Avenue
329-1000
- Fish Rock
DICK McQUISTON FORD
22075 Gibraltar Road
782-2400
- Livonia
BILL BROWN
32222 Plymouth Road
421-7000
- Mt. Clemens
MIKE DORIAN FORD
35200 Grand Avenue
261-6200
- Russ Hilline Ford
43870 Grand Avenue
293-7000
- Warhville
MCDONALD FORD SALES
5500 W. Seven Mile Road
349-1400
- Dix Park
MEL FARR FORD
24750 Greenfield
967-3700
- Plymouth
BLACKWELL FORD
41001 Plymouth Road
453-1100

Metro DETROIT'S Quality DEALERS

- Pontiac
FLANNERY MOTORS
5900 Highland Road
356-1000
- Redford
PAT MILLIKEN FORD
9600 Telegraph Road
295-3100
- Rochester
HUNTINGTON FORD
2600 S. Rochester Road
852-0400
- Royal Oak
ROYAL OAK FORD
550 N. Woodward Avenue
548-3100
- Southfield
ANUS FORD
29200 Telegraph Road
358-7500
- Southgate
SOUTHWATE FORD
16000 Ford Street
292-3636
- St. Clair Shores
ROY O'BRIEN
22201 Nine Mile Road
276-6800
- Stearing Heights
JEROME DUNCAN
8000 Ford Country Lane
266-7500
- Troy
RAY WHITFIELD
10724 S. Telegraph Road
241-0100
- Troy Ford
TROY FORD
777 Auburn R.
585-3100
- Westland
DEAN SELLERS FORD
2500 W. Maple Road
643-7500
- Warren
AL LONG FORD
13711 E. Eight Mile Road
777-2700
- Wayne
JACK DEEMER FORD
32300 Michigan Avenue
721-2500
- Westland
NORTH BROTHERS FORD
33100 Ford Road
421-1300
- Woodhaven
CORNO FORD
22025 Algon Road
676-2200