

The Prudential

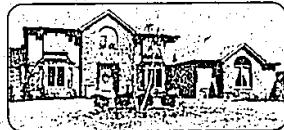
Great Lakes Realty



Presents...Fine Homes



WEST BLOOMFIELD. Elegant former model! Four bedroom home features white kitchen with garden room. Exceptional master suite with fireplace, walk-in closet and bath with whirlpool tub. Cul-de-sac setting backing to woods. \$359,900 851-8100



FARMINGTON. Located in desirable, Strathmore Sub, this executive home has all the amenities. Spacious interior with 4 bedrooms, 2½ baths, premium center island kitchen and library with French doors, Jacuzzi, central air and more. \$299,500 626-9100 02-B-6907



ROCHESTER. Outstanding Southwest Contemporary. Professionally designed finished walkout lower level with full bath and possible 4th bedroom. Quality throughout with 2 wet bars, sun room, hot tub, gourmet kitchen and much more! \$289,900 651-6850



BLOOMFIELD HILLS. Super 4 bedroom Contemporary on 2 acres with Walnut Lake privileges. Private court entrance. Very open floor plan: Family room, large master bedroom and 1st floor laundry additions. Oversized 2½ car garage. \$248,900 626-9100



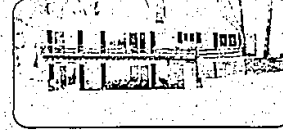
WEST BLOOMFIELD. Green Lake frontage home. This cozy 3 bedroom Ranch offers spectacular views with lots of room to expand. Finished walk-out lower level with rec room and den. Family room and dining room. Fireplaces. Newer furnace. \$245,000 851-8100



TROY. This truly special home features an indoor tree-form pool with deluxe spa and tropical garden. Custom home with 4 bedrooms, 2½ baths and Corian kitchen with premium appliances. Tri-level deck, side entrance garage. \$227,900 689-8900



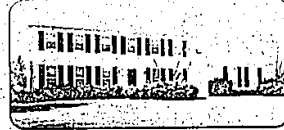
TROY. A rare combination of sophistication and luxury. Impressive gourmet kitchen. Custom glass atrium with whirlpool. Entertainment size family room. Private library. Luxurious master suite. Mature trees, decking. \$369,000 689-8900



WHITE LAKE. Spectacular peninsula setting with 165 feet of waterfront. Three bedroom, 3 bath walk-out. Ranch features a large country kitchen, 2 fireplaces, and 3 car attached garage. Finished lower level with full kitchen and rec room. \$214,500 851-8100



OPEN SUN. 1-4, 34770 Whitaker, W. of Farmington, S. of Grand River, FARMINGTON. Cul-de-sac Tudor. Includes 4 bedrooms, 2½ baths, spacious kitchen, family room with fireplace, 1st floor laundry and a huge master suite. Central air. \$189,500 626-9100



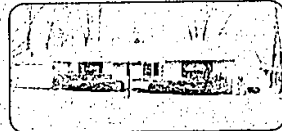
WEST BLOOMFIELD. Clean, comfortable 4 bedroom home backing to commons area in desirable North Potomac. Neutral decor with fresh paint. Newer light formal kitchen. Berber carpeting. First floor laundry. Seller motivated. \$180,000 851-8100 06-B-6929



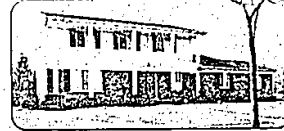
WEST BLOOMFIELD. Spacious 5 bedroom Colonial in popular Potomac Green. Kitchen updated in 1990 with light oak cabinets, new appliances and ceramic floor. Library with built-ins. Newer roof. Family room with fireplace. \$179,900 851-8100 06-B-6928



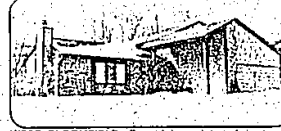
FARMINGTON HILLS. Move right in to this charming 4 bedroom home. Impeccably maintained. Newer custom oak kitchen. Custom window treatments. Central air, 1st floor laundry, formal dining room and family room with fireplace. \$161,000 626-9100 02-B-6908



BIRMINGHAM. Three bedroom home with a newer furnace and water heater. Offers a formal dining room, 1½ baths, screened porch and living room with fireplace. All kitchen appliances stay. Carpeted throughout. Two car garage. \$157,500 646-6000



TROY. Classic and spacious 4 bedroom Colonial in Stoneridge Sub. Features neutral decor, large master bedroom with bath, 1st floor laundry, finished basement with wet bar and 2½ car garage. Updated carpeting, flooring. \$155,900 689-8900 05-A-6923



WEST BLOOMFIELD. Beautiful, updated 4 bedroom Contemporary. New kitchen, furnace and windows. Large 1st floor master bedroom with bath. Living room with studio ceiling and fireplace. Formal dining room. Gorgeous tree lot. \$151,900 851-8100 06-B-6901



FARMINGTON HILLS. Perfectly charming inside and out! Three bedroom Ranch. Living room with large bay and built-in bookcases. Large country kitchen opens to family room with brick fireplace. Central air, full basement, great location! \$149,900 626-9100



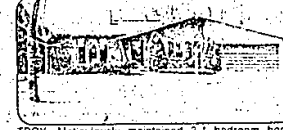
FARMINGTON HILLS. Spacious 3 bedroom, 2½ bath Tri-level on a large wooded lot. Desirable Pleasant Valley Sub with new elementary. Many updates including windows, new kitchen and appliances, recessed lighting and carpeting. \$149,700 626-9100



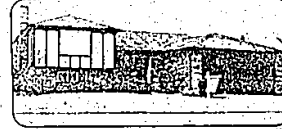
BIRMINGHAM. Immaculately maintained 3 bedroom Ranch. Wonderful newer oak kitchen with stove. Newer family room. Beautiful fireplace in living room. Also features a formal dining room, 2 full baths and an absolutely gorgeous deck. \$144,900 646-6000



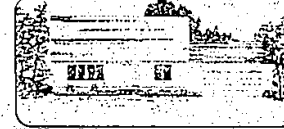
ROYAL OAK. Walk to Shrine of the Little Flower Church. Four bedroom home in a super family neighborhood! Two full baths. Family room with free-standing fireplace. Bookshelves, cabinets, fireplace in living room. Dining room. \$139,900 689-8900



TROY. Meticulously maintained 3-4 bedroom home with many updates. Great floor plan. Sunny and bright! Newer carpeting, freshly painted. Fireplace and built-in bookcases in family room. Premium parklike setting with mature trees. \$139,900 689-8900



TROY. Spacious 4 bedroom Quad-level in beautiful Rainforest Sub. Open floor plan with cathedral ceilings. Large family room with wet bar and fireplace. Formal living and dining rooms. Great kitchen with all appliances. Central air. \$134,900 689-8900 05-A-6922



WHITE LAKE. Three bedroom new construction in a desirable sub. Two story home with 1st floor master suite. Cathedral ceilings in great room and dining room. First floor laundry, 2½ baths, 2 car garage. Add your finishing touches! \$132,900 626-9100



ORION. Darling 3 bedroom, 2½ bath Ranch home on a gorgeous lot on Morgan Lake. Newly finished walk-out lower level with fireplace. New shingles, gutters and carpeting. Deck to enjoy the views. Two car attached garage. \$129,900 651-8650 04-A-6916



OPEN SUN. 2-5, 18050 Buckingham, N. of 13 Mile, E. of Southfield, BEVERLY HILLS. Sharp 3 bedroom Ranch. Fresh paint and newer carpeting. Formal dining room, 1½ baths and great room with fireplace. Finished basement, central air. \$119,900 851-8100



OPEN SUN. 1-4, 27250 Santa Barbara, N. of Eleven Mile, W. of Southfield, LATHRUP VILLAGE. Charming 3 bedroom Colonial. Coved ceilings, 6-panel doors and hardwood under carpet. Screened porch, 2 fireplaces, basement, central air. \$114,900 646-6000



ROCHESTER HILLS. Quality construction and energy efficiency are just two of the benefits offered in this home. Spacious rooms, full basement, fenced yard, trees — all for \$160,000. 651-8850 04-A-6914



FARMINGTON. Nice 3 bedroom Ranch with many updates throughout. New kitchen and water heater. Family room with fireplace. Finished basement with wet bar. Most rooms freshly painted. Two car garage. Home warranty provided. \$104,900 626-9100



OPEN SUN. 1-4, 2235 Hylle, S. of Bass Lake Rd., W. of Bensten, COMMERCIAL. Remodeled 3 bedroom Ranch. Lake privileges. Updated kitchen. New hot water heater, dishwasher and disposal. Master suite with 2 double closets and doorwall to yard. \$99,900 626-9100



ROCHESTER HILLS. Very sharp 3 bedroom Condo with tasteful, neutral decor. Freshly painted. New kitchen sink and countertop. Powder room with new counter and lights. Finished lower level. Views of pool from deck. Excellent location. \$85,500 651-8850



BIRMINGHAM. Two bedroom Townhouse in a court-yard location. Features hardwood floors, new kitchen cabinets, all new interior doors and newer water heater. Finished basement. Neutral decor. Move-in condition. Birmingham schools. \$73,900 646-6000



ROCHESTER. Paint Creek Condo Complex. Freshly painted 2 bedroom Condo. Remodeled main bath. Dining room plus eat-in space in kitchen. Master bedroom with walk-in closet. Large basement storage. Central air. Walk to town. \$59,900 651-8850 04-A-6832



SOUTHFIELD. Beautifully redone 2 bedroom Cape Cod on an extra large lot. Gorgeous interior with hardwood floors in many rooms. Two decks and patio. New kitchen and bath. New plumbing, electrical, roof. Immaculate. You'll love it! \$53,500 626-9100 02-B-6913

The Prudential

Great Lakes Realty



BIRMINGHAM/BLOOMFIELD
1520 N. Woodward
(at Long Lake)
646-6000
ROCHESTER
1460 Walton Blvd.
(at Livernois)
651-8850

FRANKLIN/FARMINGTON
31000 Northwestern Hwy.
(at 13 Mile)
626-9100
RELOCATION OFFICE
800-521-4264

WEST BLOOMFIELD
4316 Orchard Lake
(at Lone Pine)
851-8100
TROY
31150 Livernois
(at Big Beaver)
689-8900



OPEN MONDAY-FRIDAY 9 a.m.-9 p.m. SATURDAY 9 a.m.-5 p.m. OPEN SUNDAYS
The Prudential and are service marks of The Prudential Insurance Company of America.
An Independently Owned and Operated Member of The Prudential Real Estate Affiliates, Inc.