

Designs change paneling's image

Abitibi-Price of Troy has introduced three lines of paneling that have come a long way since the days of simulated knotty pine.

The Wall-In-One series combines wallpaper, a wood wainscot and a linen wall covering in one panel. The panels go up using ordinary paneling adhesive and require nothing more than a clean surface before application.

The Wall-In-One series is available in two styles and is recommended for living room, family or dining room. It comes with a lifetime warranty and can be cleaned with a damp cloth and mild soap.

A second line is the Decorative Border Series, which is designed for areas where moisture protection is necessary, such as the laundry room, bath or kitchen. A raised lip design is printed on each panel at the same

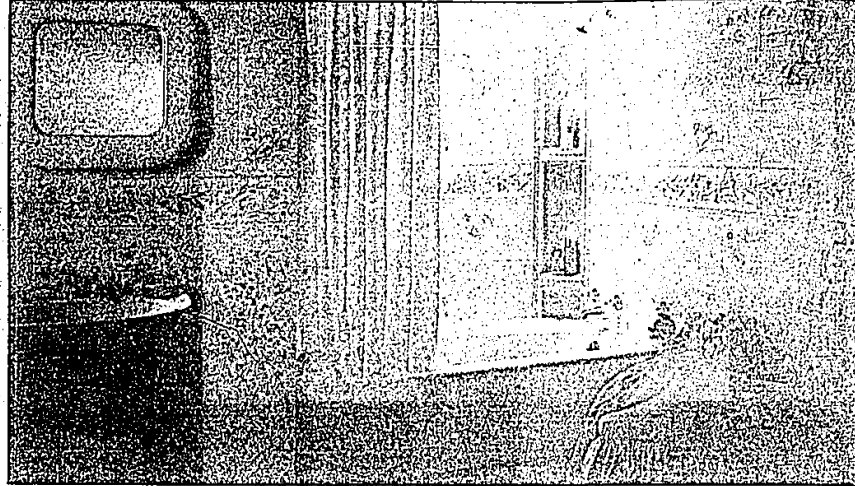
location. Each panel is an exact duplicate of the next, so matching patterns and borders isn't a problem.

"Unlike some other panels, we haven't cut the surface of our board to simulate grain lines. Instead, we actually emboss the surface of the panel during the manufacturing process," said Jim Shalvoy, Abitibi-Price marketing manager.

The series is available in two styles that are stain- and scratch-resistant. Like the decorative border panels, the Aqua Border Series is for wet room applications and grain lines are also embossed into the surface.

While the decorative border has the border near the top of the panel, the aqua border panels have their borders near the middle of the panel.

Both of these panels can be used in tub alcove installations.



The Aqua Border Series comes with 8-by-8-inch tiles and a border printed approximately in the middle of each panel.

Homearama opens

Backers of this spring's Homearama are hoping they can score a perfect 10 with the public when they present the 10th annual showcase of 10 houses May 7-25 in the Meadows at Oakland Farms Subdivision in Oakland Township.

Sponsored by the Builders Association of Southeastern Michigan and co-sponsored by Detroit Edison, Consumers Power and Standard Federal Bank, Homearama features an open house concept, at houses valued at \$300,000 to \$500,000 in a subdivision developed by M.J.C. Construction of Mount Clemens and S.R. Jacobson Development Corp. of Birmingham.

Homearama will offer the area's first look at Smart House, which features integrated automation to control heating, cooling, lighting, audio-visual and other functions in the house.

Seven of the 10 builders have roots in Observer & Eccentric community.

James Joseph Enterprises of Rochester Hills offers the American, 4,400 square feet, a \$499,000 house that features a full theater in the lower level, three fireplaces, a two-island kitchen and an octagonal dining room.

Pinnacle Residential Homes of Rochester Hills presents the Franklin, 3,816 square feet, in the \$429,000-\$474,000 price range with a two-story family room, three-way fireplace and second-floor laundry.

S.R. Jacobson Development Corp. of Birmingham will showcase the Sussex, 3,700 square feet, a Georgian-style house with four fireplaces, walk-out lower level, and a

kitchen accented by walls of windows. It lists at \$399,000.

Classic Custom Homes of Bloomfield Hills has built the Albertville, 4,288 square feet, in French chateau style in the \$379,000 to \$409,000 price range. It features seven skylights in the master suite bath, second floor and exercise room; a sauna in the exercise room; cherry cabinets with granite tops throughout the house; and a recycling center and built-in buffet in the kitchen.

Robert R. Jones Associates, Bloomfield Hills, offers the Koorwood with rounded corners in every room, floor-to-ceiling bay windows in the living room and dining room, two-story ceilings in the living room, dining room and foyer and a garage at the rear of the house. Square footage and price not available.

Robertson Brothers Co., Bloomfield Hills, presents the Lexington, 3,500 square feet, with two-story foyer, double staircases to second floor from kitchen and foyer, and a bonus room off the master bedroom to be used as a private retreat. Price not available.

Wako-Pitt Construction Co., Troy, offers Smart House, 4,900 square feet, priced at \$450,000-\$525,000. Aside from the electronic features, the house features geothermal heating and cooling, two master suites and nine-foot ceilings on main floor.

Meadows at Oakland Farms is located on Gunn Road west of Rochester Road, four miles north of downtown Rochester. Hours are 9:30-10:30 p.m. Monday through Friday, noon to 10:30 p.m. Saturdays and Sundays. Tickets are \$5.

Our preconstruction prices won't nickel and dime you to death.

Looking for a maintenance-free, amenity-rich residence and quality construction? Enter Carriage Park, luxury condominiums located in Canton. Contemporary floor plans with 1,200 to 1,400 sq. feet and turnkey preconstruction pricing from the \$90's. It's a place you'll love to come home to.

CARRIAGE PARK CONDOMINIUMS

Sales Office (313) 981-9420

HIGH POINTE

3 MODELS • SHY-LO CUSTOM HOMES

Very private setting, close to expressways. Main custom features: KITCHEN, CLOSETING, QUARTS & 2nd FLOOR. Close to schools & shopping.

Priced from... **\$122,900**

OPEN DAILY 1-5 (closed Thurs.)

MODEL 960-7083 or 363-1200

CENTURY 21 at the Lakes

ISLAND COVE
Condominiums on Loon Lake

FINAL PHASE **NEW MODEL**

WATERFRONT LUXURY LIVING

- 2 Bedrooms • 2 Full Ceramic Baths • Natural Fireplace • Swimming Pool • Elevator • Underground Heated Parking and Storage Units • Lakefront Balconies • Loon Lake, a beautiful 243 acre natural "all sports lake" • Boat Docks Available.

from... \$139,900

Model 673-6620

Hours: Open 7 Days Noon to 5 pm.
WATERFORD, NORTH OAKLAND

OAKLAND COUNTY'S BEST KEPT SECRET!
WOODCREEK ESTATES

• Boat Docking Available
• Lush Wooded Setting
• Distinctive Custom Homes
• Waterfront Park Area
OPEN SAT. & SUN. 1-4 OR BY APPOINTMENT

From \$189,900

LONG LAKE BUILDING CO.
CALL **JERRY SANDERS 363-1200**

Century 21
at the Lakes

Each Office is Independently Owned and Operated.

PHASE III NOW OPEN

Valley Pointe
condominiums

A PRIVATE COMMUNITY WITH ITS OWN 4.5 ACRE NATURAL PARK

- 2 Bedroom, 2 Bath Models
- 3 Floor Plans
- Private Entrances
- GE Appliances
- Cathedral Ceilings
- Carport

1991 BEAUTIFICATION AWARD WINNER

From \$68,500

12-5 Daily • Thursday 2-8 p.m.
981-6550

SALES BY CENTURY 21, HARTFORD SOUTH, INC.

The Jensen Group

JENSEN

ARCHITECTS BUILDERS DESIGNERS ARTISANS

PRESENTING LONG-TERM INVESTMENTS WITH BEAUTIFUL DAILY DIVIDENDS.

An estate home from The Jensen Group is, perhaps, one of the smartest investments you can make. One that promises a very high level of comfort.

Desirable woodland properties in Bloomfield and Bingham Farms are now available for exclusive Jensen residential design and construction.

For details please call us at 311 540 1850. We encourage your inquiry about a rewarding investment you'll appreciate more each day.

Fox Run
CONDOMINIUMS

Custom Crafted Condominiums
Located in the Beautiful Woods of Waterford.

Nestled among the beautiful lakes of North Oakland County, Fox Run Condominiums offers its home owners a quiet, peaceful setting within minutes of a variety of lakes, golf courses and wooded trails. Custom crafted 2 and 3 bedroom condominiums with attached 2 car garage make Fox Run the right choice of today's home owner.

Fox Run Condominiums...where quality is a tradition

from \$108,900

Open 12-6 Daily, closed Thursday (313) **683-9100**

Brokers Welcome

West of M-59 on the Northeast Corner of Elizabeth Lake Road and Hospital Road.