

## Window walls accent shape of family room

Jutting out to the rear like the prow of a ship, a vaulted family room dominates the core of the Hilltop. Living room and dining room are also at the center, facing the street. Bedrooms are located on both sides, with the master suite to the left, two bedrooms and a utility room to the right.

Total square footage of the living area is 2,068 square feet.

Windows make up most of the prow-shaped rear walls of the family room, creating a bright environment on even the darkest of winter days. Electric lights will rarely be needed during daylight hours.

An eating nook, adjacent to the kitchen, is further

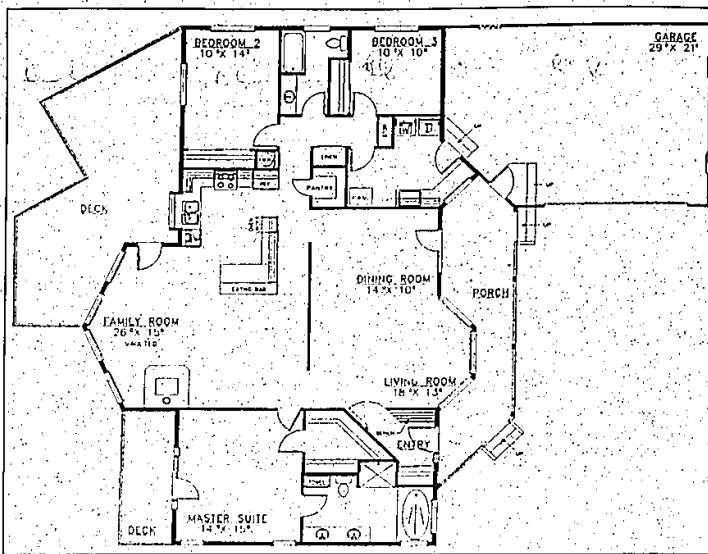
lighted by a side window. Even the utility room has a window, which looks out across the yard. But here, and in the living and dining rooms, the light is softer, muted by the covered porch.

Another energy conservation feature is an air-lock entry way with a built-in bench for removing muddy footwear. Boots and shoes can be stowed underneath.

Double doors in the master suite open onto a private deck, one of two at the back of the Hilltop. Other features in the master suite include a large walk-in closet and a private bathroom with twin basins and a glass-enclosed spa tub.

The utility room is accessible from the garage as well as the bedroom wing, and the hallways are lined with linen and storage closets.

For a study plan of the Hilltop (401-03), send \$7.50 to Landmark Designs, P.O. Box 2307, Eugene, Or. 97402. Specify plan name and number when ordering.



## Open housing

Continued from Page 1

In addition to writing a column in Building Business and Management, the monthly magazine produced by the Builders Association of Southeastern Michigan (BASM) in Farmington Hills, the center has approached the association about sponsoring in-house events.

"Right now we're trying to set up a summit with BASM to help highlight the center and the potential for new business," said Wettlaufer. "We haven't received a date yet, but we feel our services could help home inspectors, banks, real estate agents and other related trades."

Bernard Glickerman, president of BASM, is volunteering support for the center's mission, said racially diverse communities can be a means to defuse future racial tensions.

"We recognize there are communities that traditionally have been without an ethnic mix in their population, and they may wish to maintain that practice, but the development of racially, religiously, politically and socially diverse neighborhoods can only work to help fulfill this nation's role as the great melting pot," he said.

On Wednesday, April 29, the center will sponsor a fair housing forum for real estate agents at the Standard Federal Bank headquarters in Troy. For more information about the forum or the center, call 647-0575. For a story on Fair Housing Month, see the real estate section on Page 1F.

**WOODSIDE VILLAGE**  
A Forest and Ponds in your Backyard Plus the Pleasures of Northville Township and Plymouth-Canton Schools  
Pre-Grand Opening Prices  
2900 Sq. Ft. From \$260,000  
Models Now Open/Exciting New Plans!  
Located on Hungry at 51/2 Mile Road  
464-9420  
Offer good for limited time only

**Builder's CLOSEOUT**  
Only 9 Homes Left!

**CLARISPRING ESTATES**  
From \$197,500  
**NOVI'S**  
FASTEST SELLING SUBDIVISION  
4-Bedroom Colonial  
2,500 to 2,700 Sq. Ft.  
NOVI SCHOOLS  
WALK-OUT & PARK LOTS Available  
30 to 90 Day Occupancy  
TRI-MOUNT HOMES  
348-2770  
4001 E. 11 Mile Road  
2 Blocks East of 2nd Ave.  
Open Daily 1 to 6, (Closed Thursday)

**PURE LUXURY IN PLYMOUTH FROM \$299,000**  
**Nothing Else Compares.**  
Each masterpiece home combines the art of old world craftsmanship with expansive interiors that offer the ultimate in today's luxury features.  
Discover everything you've been looking for in an exclusive new neighborhood on Ridge Road between N. Territorial and Powell Roads, south of M-14 in Plymouth.  
**Fox Pointe**  
Luxury Homes  
Showcase Models Open  
Call: 454-4044

**INTERESTED IN QUALITY?**  
PHASE II SOLD OUT!  
Don't miss our last 1 x 1.5 level. Look video for an in-depth look into the quality of our homes.  
**SECTION 10 AFFORDABLE QUALITY CAN BE**  
**PRICED FROM \$134,900**  
**AT LYONIA'S**  
**Whispering Winds**  
HOURS: 953-0765 Weekdays 11 a.m. - 6 p.m. OPEN 7 DAYS Sat & Sun Noon-6 p.m.  
Just South of Ann Arbor Trail on Newburgh Road  
**B & K DEVELOPMENT COMPANY, INC.**

**12 alternatives to lashing out at your kid.**  
The next time everyday pressures build up to the point where you feel like lashing out—STOP! And try any of these simple alternatives.

You'll feel better . . . and so will your child.

1. Take a deep breath. And another. Then remember you are the adult . . .
2. Close your eyes and imagine you're hearing what your child is about to hear.
3. Press your lips together and count to 10. Or better yet, to 20.
4. Put your child in a time-out chair. (Remember the rule: one time-out minute for each year of age.)
5. Put yourself in a time-out chair. Think about why you are angry: Is it your child, or is your child simply a convenient target for your anger?
6. Phone a friend.
7. If someone can watch the children, go outside and take a walk.
8. Take a hot bath or splash cold water on your face.
9. Hug a pillow.
10. Turn on some music. Maybe even sing along.
11. Pick up a pencil and write down as many helpful words as you can think of. Save the list.
12. Write for prevention information: National Committee for Prevention of Child Abuse, Box 28661, Chicago, IL 60690.

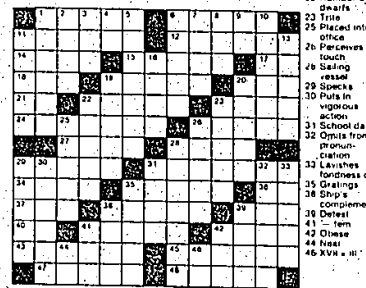
## CROSSWORD PUZZLER

**ACROSS**

- 1 Cluttered
- 6 Grates
- 11 Actress
- 12 Gets up
- 14 Fair face
- 15 Ardent
- 16 Concerning
- 18 Baseball
- 19 Giraffe
- 20 Storage
- 21 Spinning
- 22 Japanese
- 23 Trunk
- 24 Field in high
- 26 Niagara
- 27 Mission
- 28 Per

**DOWN**

- 1 Learning
- 2 Diplomacy
- 3 Empty
- 4 Negative
- 5 Rubber
- 6 Flares
- 7 War god
- 8 Title of respect
- 9 Single ID
- 10 Continued
- 11 Sedate
- 13 Dispatches
- 16 Matured
- 19 Kitchen
- 20 Leather
- 22 Number of
- 23 True
- 25 Placed into
- 26 Perceives by
- 28 Sailing
- 29 Speaks
- 30 Puts in
- 31 School dance
- 32 Omits from
- 33 Lavishes
- 35 Gratings
- 36 Ship's
- 37 Defect
- 40 Tem
- 44 Chase
- 46 X-M



Compliments of The  
**Birmingham-Bloomfield**  
Board Of Realtors



**We Built Quite A Reputation In Farmington Hills**  
**3 & 4 BEDROOM HOMES FROM \$194,900**  
We stake our reputation on unsurpassed value and satisfied customers. Just ask any of the thousands of families we've proudly built homes for. You'll be impressed. Come see for yourself this week for special savings!  
**GREEN VALLEY ESTATES**  
Located on 15 Mile, just east of Highland Rd.  
Models Open Daily & Weekends until 6 p.m. (Closed Thursday)  
Call 477-1144 or 477-0189 (Office)