

QUALITY: EXCELLENCE OF CHARACTER;

As, "The Thoroughbred shows quality."

For 43 years we have been privileged to offer quality homes for your consideration and purchase.

And, for quality service, give us a call!



GRACIOUS ENTRANCE HALL highlights this four bedroom Tudor with an open floor plan. Crown moldings, high ceilings, 6-panel doors, recessed lighting and a walk-out lower level. Deck with whirlpool. (644-6300) B02473



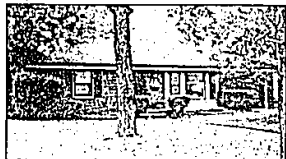
READY TO MOVE INTO, this three bedroom updated ranch has a spacious floor plan. New kitchen complete with appliances. Newer central air. Walking distance to Pierce School and shopping. \$119,900. (644-6300)



GREAT LOCATION - Very short walk to Birmingham's Midvale and Seaholm Schools. Living room fireplace, new country kitchen with hardwood floors, 3 bedrooms. Porch overlooks beautiful yard. \$159,000. (644-6300) B96421



OVER EIGHT ACRES in Bloomfield Hills with a fine Robertson Bros. Tudor. Huge family room with vaulted beamed ceiling, bar room and French doors to deck. Four bedrooms and walk-out lower level. (644-6300) B02643



FINE RANCH on beautiful tree-lined street in Royal Oak. Living room with bay window and fireplace, family room off updated kitchen, three bedrooms. Cove ceilings. Neutral decor. Fenced yard. \$108,500. (644-6300) B02627



BREATHTAKING WOODED LOT in desirable Christian Hills. Entertaining room with wet bar and hot tub, 4 spacious bedrooms, kitchen with tile flooring. French glass beveled doors, skylights. Rochester. \$179,900. (651-3500)



NEW ENGLAND STYLE in Bloomfield, built by Leo Riley, has antique beveled glass doors and hardwood floors. Family room with fireplace, remodeled kitchen, four bedrooms, 2 1/2 baths. Multi-level deck. \$195,000. (644-6300)



CHARMING INSIDE AND OUT, carefully maintained and updated. Large living, dining and family rooms. Library, three bedrooms and 3 1/2 baths. Central air. Special appointments befitting its fine location. (644-6300)



DOWNTOWN BIRMINGHAM TOWNHOUSE has private courtyard entryway, high ceilings, crown moldings, hardwood floors. Gourmet kitchen, three bedrooms, master suite with fireplace. Expansive glass. \$419,000. (644-6300) B02577



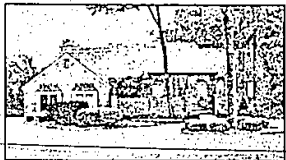
LOVELY TURNKEY RANCH with many newer improvements. Fireplaces in living and family rooms, two bedrooms and two baths. Gourmet kitchen has garden window and ceramic floor. Florida room. \$155,000. (644-6300) B02626



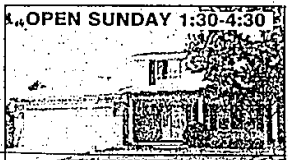
OPEN SUNDAY 1-4
BEAUTIFUL WOODED LOT on cul-de-sac. Multi-level deck. Neutral decor, 6-panel wood doors, hardwood floors in library, intercom. 4 bedrooms. \$227,000. 30850 Westchester, F.H., S. of 9 Mile, W. of Halsted. (851-5500) B02453



SHARP BLOOMFIELD VILLAGE COLONIAL has large living and dining rooms, 3 large bedrooms and 2 1/2 baths. Hardwood floors. Patio off family room. Security and sprinkler systems. Recently redecorated. \$275,000. (644-6300) B98582



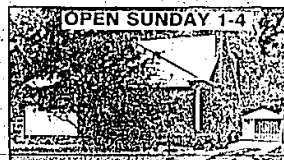
HANDSOME TRADITIONAL COLONIAL in a beautifully wooded setting. Special architectural features include spacious foyer, 16' living room ceiling, master with fireplace, walk-out lower level and two decks. (644-6300) B02603



NEAR GOLF COURSE. Great family home on large lot. Office or 5th bedroom in finished basement. Family room fireplace. Nice open floor plan. \$112,000. 10890 Lincoln, L.V., N. side, W. of Southfield. (689-7300) S00314



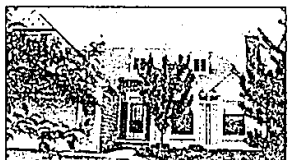
RIVER BOTTOM STONE faces this Cape Cod. 1st floor master and bath, walk-in closet. Hardwood floors, cove ceiling, sunny glass walled family room. Bay window in the living room. \$103,000. (851-5500) B02480



WONDERFUL BIRMINGHAM HOME with four bedrooms, 2 1/2 baths. Breakfast nook with doorwall to newer walmantized deck plus brick patio. Fireplace. \$135,000. 2665 Windemere, N. of Maple, E. of Eton. (689-7300) S00307



TWO-STORY BRICK HOME. 3 bedrooms, beamed cathedral ceiling and brick fireplace highlight family room. Library location offers flexible options. Deck has overhead trellis. Wood cabinets in kitchen. \$179,500. (851-5500) B02316



"THE HEATHERS." Sophisticated detached condo in Bloomfield. Lake view, library with fireplace, vaulted ceiling, bar in great room, three bedrooms. Deck wraps around kitchen, living and dining rooms. \$299,000. (644-6300) B96446



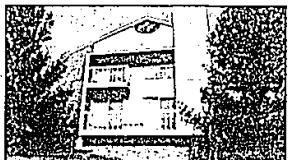
THE CITY OF BLOOMFIELD HILLS location can't be beat! Wood plank kitchen floor, family room, three bedrooms, garden room, deck off dining room and breakfast nook opens to a brick patio. \$299,900. (644-6300) B98575



CITY OF BIRMINGHAM. "Olde World" architectural detailing including leaded glass, alcoves, moldings, paneled doors, high ceilings and more. Updated with nostalgic appeal. Family room, 3 bedrooms. \$144,900. (644-6300) B02644



ORIGINAL OWNER - Grass quality built four bedroom Colonial on high, beautiful lot with circular drive. Vaulted, beamed ceiling in family room and kitchen. Library. Crown moldings. Sprinkler system. \$410,000. (644-6300)



DELIGHTFULLY BRIGHT AND OPEN three bedroom, 3 1/2 bath condo tucked amid greenery of woods and ravine in heart of Bloomfield Hills. Two-story great room, library, finished walk-out lower level. \$289,900. (644-6300) B00438



STUNNING TOWNHOUSE with two-story great room, magnificent hardwood flooring thru-out 1st level. Impressive living room fireplace. Family room. Master with two walk-in closets. Three bedrooms. \$269,900. (644-6300) B75059



LUXURIOUS CAPE COD in Hills of Oakland. Studio ceiling family room, gourmet kitchen with white cabinets and appliances. 4 bedrooms, 3 full and 2 half baths. Fireplace in daylight basement. Rochester. \$489,900. (651-3500)

Weir, Manuel, Snyder & Ranke, Inc.

HOURS - weekdays from 8:30 in the morning until 8:00 in the evening.
Saturday until 5:00 P.M.
Sunday afternoons to 5:00 P.M.

298 South Woodward
7285 Orchard Lake Road
4700 Rochester Road
1205 West University Drive
498 South Main Street

Birmingham/Bloomfield Hills
West Bloomfield/Farmington Hills
Troy/Birmingham/Bloomfield
Rochester/Rochester Hills
Plymouth/Northville/Canton/Novi

644-6300
851-5500
689-7300
651-3500
455-6000

