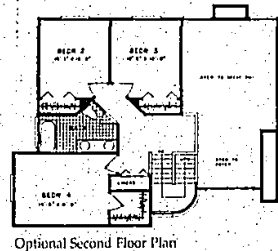


First Floor Plan
Square Feet: 1,700
Bedrooms: 3
Bathrooms: 2 1/2



Optional Second Floor Plan

Essex from page 10

\$130,000, was thin.

"People who gave the nod to the Essex cited its decor, master bedroom, dramatic entrance and feeling of spaciousness," said Nancy Rosen, spokeswoman for the Homearama conducted by the Builders Association of Southeastern Michigan. The Essex is priced at \$112,900.

The model has a 22-foot ceiling in the living room and foyer with a second-floor balcony overlooking the main living/entertaining areas.

The master bedroom on the first floor contains a private bath and walk-in closet. Two smaller bedrooms and a bath are upstairs.

The model also contains a two-car attached garage, first floor laundry, fireplace and basement. "Everything is open in the house," said Singh Chhatwal, president of the building company. "It's actually a smaller version of other models we have in Farmington Hills."

"A lot of people like openness. It doesn't look like a small house. The whole living room you can see from the balcony upstairs. The kitchen has corner windows which is unusual for smaller houses," I design these houses. We interior design ourselves."

Allan Shapiro, Chhatwal's partner, tends to the construction end of the operation.

"Our houses are contemporary elevations for the outside and openness on the inside," Shapiro said. "We try to build a quality home at an equitable price and give them what they want."

"We used oak nails with Lucite spindles," he continued. "We tried to keep our quality very high. Wherever we can upgrade where the cost is minimal to us, we do it."

"It's a nice honor, a good feeling. I guess, to know we did something right. You happened to catch two builders who are laid-back. We're low-key people," Shapiro said.

Crowds were reported good for the first showcase of idea homes ever in a central city and in spite of Grand Prix activities downtown. More showgoers responding to a survey than at any previous Homearama, 50 percent, indicated that they were in the market to buy a new house now, Rosen said.

The exhibition continues through June 21 in the Victoria Park Subdivision on Dickerson south of Jefferson about three miles east of Belle Isle.

Hours are 3-10 p.m. Monday through Friday and noon-10 p.m. Saturday and Sunday. Tickets, which includes a program book and parking, are \$6. Discount tickets for \$5 good Monday through Friday are available at Standard Federal Bank and Detroit Edison offices.

Ceilings demand special treatment

(AP) — Rooms with a very high ceiling, or those with few useable walls such as a kitchen, bath, or screened porch, are particularly good candidates for special ceiling treatments.

Designer Barbara Ostrom of Minnehaha, N.J., says that by decorating a ceiling in an assertive manner you can solve a major problem of a large room: How to unify it.

For a small, high-ceiling bathroom, try tenting it with fabric or trompe l'oeil or adding beams. All will visually lower the ceiling and improve the room's proportions.

CLARIFICATION

Last week's story incorrectly identified the Farmington Hills builder of one of the area's first permanent wood foundation homes. The builder is Joseph Blazie, president of B. Joseph & Associates.

On The Water...
BLUE HERON POINTE
Beachfront Cluster Homes in Northville Township

Crystal clear water for swimming, boating & fishing...a lifestyle you'd love to come home to!

Featuring spacious ranch and 2 story luxury homes with natural stone fronts and private decks, patios, overlooking calm water and sandy beaches.

from \$199,500
344-8808
Sales Center
Model's Open Noon-5:30 p.m.

We've Built Quite a Reputation...

Come see three of Ito-American's most outstanding new home and condominium values in Farmington Hills and Plymouth. Thousands of families have chosen Ito-American. Now...it's your turn!

RIVER PINES
FARMINGTON HILLS
Now \$140's

The Price is Right! Exciting new plans priced to buy right now. Choose from seven craftsman ranch and two-story styles. Traditional attached condominiums or detached plans for the utmost in privacy.

Open 12 pm Weekdays • Noon 6 pm Weekends (Closed Thursdays)

Prime Area 9 Mile Rd. & Dixie Hwy.
474-1060 (Office)
477-0189 (Home)

Fox Pointe
PLYMOUTH LUXURY
Now \$299,000

Nothing Else Compares! Each masterpiece home combines the art of old-world craftsmanship with expensive interiors that offer the ultimate in today's luxury features.

Open 12 pm Weekdays • Noon 6 pm Weekends (Closed Thursdays)

Ridge Rd. between N. Terminal & Powell Rds.
454-4044 (Office)
477-0189 (Home)

GREEN VALLEY ESTATES
LUXURY HOMES
Now \$199,900

Farmington Hills! We make our reputation on unsurpassed value and satisfied customers. Just ask any of the thousands of families we've proudly built homes for. You'll be impressed. Come see for yourself this week and enjoy special savings!

Open 12 pm Weekdays • Noon 6 pm Weekends (Closed Thursdays)

Located on 9 Mile, east of Halsted Rd.
477-1144 (Office)
477-0189 (Home)

Lilley Pointe
condominiums

OWN THE AMERICAN DREAM...
YOUR OWN HOME
RENTERS - MINIMIZE YOUR INCOME TAX

- 1 Floor, 2 Bedroom, 2 Bath Models
- A Floor Plans
- Private Entrances
- GE Appliances
- Cathedral Ceilings
- Carport

The best tax deduction you can have is your home. We can explain how you can save money buying instead of renting. Call us today.

From \$68,500

Open Daily 12-5 p.m.
Closed Thursday
981-6550

SALES BY CENTURY 21, HARTFORD SOUTH, INC.

Grand Opening - Final Phase

Laurel gardens
Luxury Condominiums
• ANN ARBOR •

Consider The Advantages

The Location: Adjacent to the U of M Botanical Gardens, minutes from the center of town and freeway access — yet nestled in a peaceful country setting.

The Choices: Innovative ranch and two-story homes, large rooms, wooden decks and enthralling views. Elegant appointments include designer kitchens and bathrooms with whirlpool tubs, fireplaces, soaring ceilings, and more!

The Community: From the moment you enter this distinguished gatehouse community, Laurel Gardens will become more than your private home, it will be your private resort, offering tennis courts, swimming pool and lush landscaped grounds.

The Values: From just \$198,900 Laurel Gardens is Ann Arbor's finest condominium buy.

Visit 12:30-5:30 daily. Closed Thursdays. Located on Hudson, between Geddes and Plymouth Rds.
Sales Center 763-8277. Brokers welcome. Immediate Occupancy.

Now You Have Two Choices For Custom Quality Homes In Novi.

Singh Development Co., Ltd. has brought a commitment to quality to their two latest communities — Bradford of Novi and Westminster Village. Each exemplifies a philosophy: that each community is more than just a place to live; it is a place for living.

Bradford of Novi
• Four Distinctive Floor Plans including Ranches, Caps, Cools and Colonials
• Estate-sized Hall Vests
• Lots with Common Park Areas
• Vaulted & Cathedral Ceilings
• 3 Bedrooms, 4 1/2 Baths
• Attached 2-Car Garages
• Master Suites with Walk-in Closets and Whirlpool Tubs
• Great Northville Schools

On Lake Rd. South of 16 Mile
(313) 480-8888
Prices from \$289,900

Westminster Village
• Five Distinctive Floor Plans including Ranches, Cape Cods and Colonials
• A 4 Bedrooms, 2 1/2 Baths
• Dramatic Cathedral Ceilings
• Living, Family and Dining Rooms, Library
• Island Kitchen with Nook
• 2-Car Attached Garages
• Great Novi Schools

On Telegraph Road, South of 16 Mile
(313) 442-2626
Prices from \$169,900

Open Daily 12-6
Closed Thursday
Singh Development Co., Ltd., Birmingham, MI • (313) 433-1100