

Living areas well defined

"A place for everything and everything in its place." A saying that fits the country-style Contessa.

Inspired by ideas for a reader, Landmark designers provided clear separation of living environments in this plan. Formal areas are at the center, with informal spaces at the back and formal rooms at the front. Bedrooms and a den are to the right, master suite and utility room to the left.

Dining room, living room and entry are vaulted, adding to the impression of spaciousness. Glass cabinets define the entryway without destroying the open feeling. The entire area is brightened by two dormer windows overhead, and it is richly windowed at the ground level.

The kitchen/family room windows line a long back wall expanded

by a bayed eating nook. And with most skylights over the kitchen, electric lighting will rarely be needed during the day.

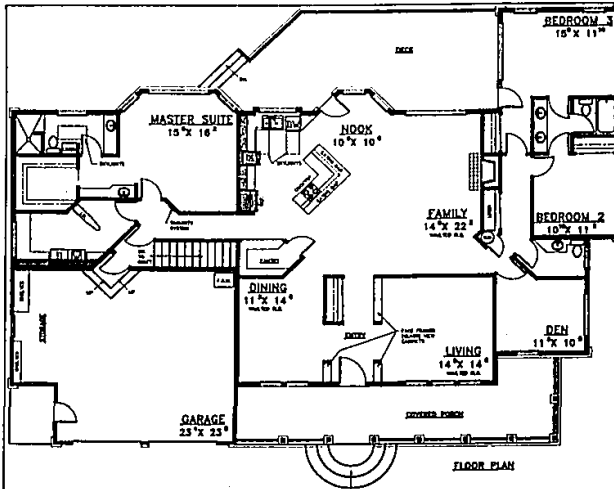
An L-shaped eating bar juts into the family room and provides extra counter space. From the built-in cooktop, meals are easily served to those at the counter or in the dining room. Shelves on one side of the walk-in pantry can be accessed through doors that open to the kitchen.

With a wide bay window, the master suite is a bright and luxurious adult retreat with a walk-in closet and a skylit private bath. A second vanity is outside the bathroom in the dressing area. Controls for a home security system are in the adjacent hallway.

The utility room is larger than

most. Features include a pull-down ironing board and ample counter space. The garage is extra room and comes with storage shelves.

For a study plan of the Contessa (332-022), send \$7.50 to Landmark Designs, P.O. Box 2307, Eugene, Ore. 97402, including the plan name and number when ordering.



A Sense of Well-Being in the Heart of Bloomfield!



Sensational Single-Family Homes at Sensible Prices

Bloomfield North provides families with everything they need to truly enjoy life. Including Avondale schools and shopping right around the corner.

Just as family traditions are valued at Bloomfield North, unbeatable values are a tradition. Which is why your family can still buy a richly detailed four-bedroom home on a prime homestead with a side-entry garage from just \$229,900!

Come home to a community built on values while today's low, low interest rates give you even more for your money.

Located off Superior Road, between Square Lake Road and South Boulevard in Bloomfield. Models Open Daily & Weekends (Closed Thursday).

BLOOMFIELD NORTH ESTATES
853-2233 MJC Builder / 299-5544 Olympia Homes

Get Ready for the Country...

3150 Square Feet
\$250,000 on 2 1/2 Acres



TIMBERVIEW ACRES

Buy your 2 1/2 acre country estate now at today's low prices and build later.

Timberview Acres is located within a highly-rated school system, close to Ann Arbor's outstanding cultural and educational facilities. You're only minutes from work centers in Livonia, Plymouth, Canton, Garden City & Dearborn.

OPEN HOUSE: Sat. & Sun. 1-5
(313) 559-7430 • (313) 998-0444
Brokers Welcome

J.A. Bloch & Co., Inc.
Countryside Living

BUY NOW BUILD LATER - TWO YEAR TERMS

ATTENTION! SENIOR CITIZENS BRIDGETOWN CONDOMINIUMS VILLAGE OF CHELSEA - 475-7810

(I-94 W. of Chelsea exit, N. half a mile to stop light, Left 1 block.)
Building Last Phase
2-bedroom ranch, 1,260 sq. ft., plus full basement,
2-car garage, patio, deck, central air, traditional
interiors, with GE built-ins.

from **\$129,900**



2-bedroom ranch with walk-out basement, 1,478 sq. ft. each level. Overlooking nature area.

from **\$159,900**

MODELS OPEN 7 DAYS

11:00 a.m. to 5:00 p.m.

"A Lloyd Bridges Development"

located 1 block from shopping and Chelsea Medical Center

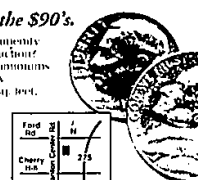
ASSOCIATION DUES: 605 mo. Includes grounds maintenance, snow removal, exterior building maintenance, fire insurance.

Our preconstruction prices won't nickel and dime you to death.

Turnkey pricing from the \$90's.

Looking for a maintenance-free, amenity-rich residence and quality construction? Enter Carriage Park, luxury condominiums located in Canton. Contemporary three plans, with 1,200 to 1,400 sq. ft., make it a place you'll love to come home to.

CARRIAGE PARK
CONDOMINIUMS



Sales Office (313) 981-9420

On The Water... BLUE HERON POINTE Beachfront Cluster Homes in Northville Township



Crystal clear water for swimming, boating & fishing...a lifestyle you'd love to come home to!

Featuring spacious ranch and 2 story luxury homes with walkout lower levels and private decks patios overlooking calm water and sandy beachfronts

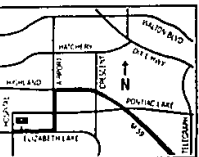
from **\$289,000**
344-8808

Sales Center
Models Open Noon-6:30 pm

Fox Run CONDOMINIUMS



Custom Crafted Condominiums
Located in the Beautiful Woods of Waterford



West of M-59 on the Northeast
Corner of Elizabeth Lake Road
and Hospital Road.

from **\$108,900**

Open 12 - 6 Daily
closed Thursday

(313) **683-9100**

Brokers Welcome

DETACHED CONDOMINIUMS With A European Touch

An Exceptional Lifestyle Awaits You In Livonia.



The simplicity and convenience of detached condominium living with the elegance and privacy of a single family home. Enjoy a distinctive, luxurious lifestyle in a water-filled continental European atmosphere at a place far from the ordinary.

Priced from \$199,500
953-0080
Open Daily 12-6

The Villas
LUXURIOUS DETACHED CONDOMINIUMS
A B&B Development Community