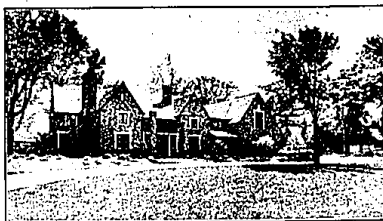


HOMES OF QUALITY ARE OUR SPECIALTY!



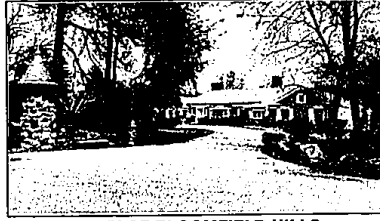
COUNTRY ESTATE

Elegant living space of 6,800 square feet plus separate quarters of 1700 square feet. Six acres (including 2 separate lots). Marble foyer, formal dining room, open kitchen, sun room, 500 square foot master suite. \$1,400,000 B-01714



CITY OF BLOOMFIELD HILLS

Beautiful estate decorated to perfection! Premium next-to-Cranbrook location. Outstanding decorative woodwork, beautiful moldings, 6 panel doors, newer kitchen, 5-6 bedrooms, library, family room, lovely garden room. B-05851



CITY OF BLOOMFIELD HILLS

Custom built ranch on 1.8 acres with river and pond setting. Large pool area, fantastic two-story great room, Florida room, beautiful hardwood floors and crown moldings. Heated dog kennel with 3 runways. \$925,000 B-02099



FRANKLIN RAVINES

Decorated to perfection and beautifully landscaped with private pool area. Wildpool spa, brick patios, 4 bedrooms, family room plus library. A beautiful home in a beautiful area. Bloomfield Hills schools. \$759,000 B-03320



OPEN SUNDAY 1-4

Many amenities including extensive use of marble, acre-plus lot, 5 bedrooms, 4 full, 2 half baths, 2 large decks, special two-story sun room, 2 kitchens. \$215 DEER RUN (N. of Pontiac Tr. & W. of Orchard Lk.) \$775,000 B-05104



PINE LAKE FRONTAGE

One of a kind redesigned by Des Rosiers in 1985 with over \$400,000 renovation costs. Custom built quality throughout. At water's edge providing spectacular views from every room. \$550,000 B-05335



BLOOMFIELD HILLS SCHOOLS

Lovely wooded lot and 1,500 square feet of docking. Extensive custom features. Mirrored exercise room, 4 full and 2 half baths, 3 car garage, great room, library, rec room. An excellent value. \$525,000 B-82559



BEAUTIFUL WOODED LOT

Contemporary one-owner home in lovely LaPlaza. View of Upper Straits Lake. Open floor plan, 4 fireplaces, great kitchen, finished lower level. Subdivision offers tennis, park and much more. \$649,000 B-04994



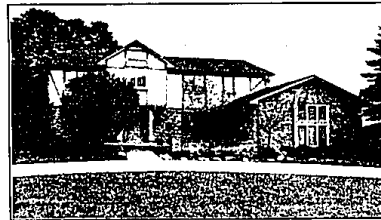
CITY OF BLOOMFIELD HILLS

A gracious home in a lovely setting. Country kitchen with adjoining family room and fireplace/grill. First floor master with double walk-ins. Second kitchen in lower level. Beautifully landscaped. \$549,900 B-05020



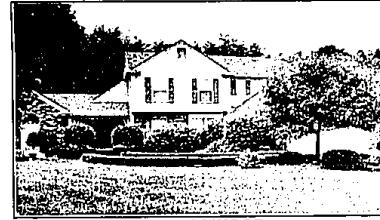
LARGE WOODED LOT

Nice home in a desirable family neighborhood. Newer features include furnace, air conditioner, humidifier, garage door, driveway and retaining wall. Motivated owner! \$219,900 B-03893



OPEN SUNDAY 1-4

Quality custom home with open floor plan. Special attention to fine detail. Hardwood floors, vaulted ceilings, neutral decor, ceramic countertops, ceramic tiled foyer. 6840 JONATHAN (S. of South Blvd. & E. of Beech) \$269,900 B-06671



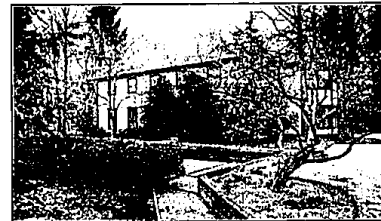
RAMBLEWOOD

Relocate forces the sale of this outstanding home in a beautiful gated community. Spectacular rear wooded setting offering lots of privacy. Premium lot. Newly decorated. Open feeling. \$279,900 B-04542



BIRMINGHAM

Bring offer. Owner motivated to sell immediately. Great price for a great neighborhood. Freshly painted. Hardwood floors. Finished basement. Newer furnace/central air. \$110,000 B-04979



TWO WOODED ACRES

Special New England colonial in a beautiful setting. Living room and family room with brick patio access. Triple Jennaire cook top, bay breakfast area, upstairs studio with half bath. \$395,000 B-01661



TROY

Many upgrades in this delightful family home. Contemporary flair with open, flowing floor plan. Two-story entry, fireplace living room, ceramic tile and wood floors. Move-in condition. \$273,900 B-05273



BIRMINGHAM SCHOOLS

One of the largest lots in the subdivision with super garden, play area and room for a pool. Hardwood floors throughout. New Berber carpeting in living and dining rooms. Finished rec room. \$134,500 B-04522



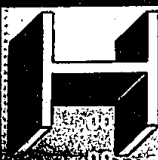
WINTER SPORTS AREA

Custom built chalet on 10 acres. Sleeps 10. Near Skyline skiing slopes, Fox Run Golf Course, Higgins and Marguerite Lakes. Cross country skiing, groomed snow mobile and bike trails. \$105,000 B-05709



BEVERLY RANCH

Close to Birmingham and shopping. Ready to move into. Well maintained with open floor plan, cozy Florida room. Great for starter, empty nester or singles. Three bedrooms. Birmingham schools. \$132,000 B-01630



Hannett, Inc. Realtors

646-6200

2511 W. Maple at Cranbrook

Bloomfield Hills, MI 48301

open Monday through Friday 8:30-8:30 p.m., Saturday 9-6 p.m. and Sunday 10-6 p.m.

Is a move to FLORIDA in your future?
Call John Hannett for personal service
both here and there!
646-6200



Estates Club

club for the world's leading real estate firms

