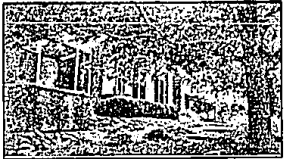


**The harder we work, the luckier we get.
It's another way of saying "As you sow,
so shall you reap."
And it's certainly true in real estate.
We believe in sowing hard work and
quality service.
May we do it for you?
WEIR, MANUEL, SNYDER & RANKE, INC.**



STATELY RESIDENCE on two beautiful acres with rolling gardens, lighted tennis court and large swimming pool near Bloomfield Hills Country Club. Family room, 5 bedrooms, Florida room and 4 car garage. (644-6300) B05825



BEAUTIFUL PROPERTY in Bloomfield Hills with Walnut Lake privileges. Exciting home for living and entertaining. 4 bedrooms, 3 baths, family room, rec room, patio, pool and cabana. Adjacent lot also for sale. (644-6300) B05568



PRIME LOCATION with easy access to freeways, shopping and entertainment. Living room with fireplace. Three bedrooms. Finished basement. Deck. Two car garage. Bloomfield Hills Schools. \$129,900. (644-6300) B06820



MAJESTIC LANDMARK HOME - Former Skilman Estate has been restored with integrity! Exquisite detail: mouldings, archways, bays and brass hardware. Magnificent kitchen. Unique studio. Carriage house. (644-6300) B05761



LARGE PRIVATE LOT with many trees in Cedarview Sub. 4 bedroom, 3 bath ranch offering finished walk-out lower level, huge kitchen, formal dining room, main floor laundry. Drastically reduced to \$190,000. (651-3500)



CONVENIENT LOCATION, nice neighborhood for this two bedroom, 1½ bath end unit condominium in need of some TLC. All kitchen appliances included. Patio with gas barbecue. Pool in complex. \$59,369. (644-6300) B07725



ROY MERCER COLONIAL with marble foyer, hardwood floors, two fireplaces, remodeled baths and kitchen. Four bedrooms. Library, family room. Lake privileges on Walnut Lake. Great living! \$245,900. (644-6300) B06763



GREAT ROYAL OAK RANCH - Don't pass this one by! Over 1300 square feet with cozy quiet family room with fireplace, hardwood floors, updated kitchen, newer vinyl windows, finished basement with bar. \$84,900. (851-5500) B07532



NOT ONLY IS THE LOCATION GREAT but this Birmingham Colonial is most charming. Marble living room fireplace, family room, sun room and three bedrooms. The neighborhood is one to "kill" for! \$228,000. (644-6300) B07764



IMMEDIATE POSSESSION. Quiet, scenic treed area surrounded by more expensive, attractive homes. Excellent living space with an updated kitchen, family room fireplace, 4 bedrooms, 2½ baths. Central air. \$209,000. (644-6300) B09785



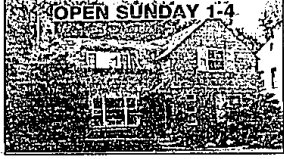
BRIGHT, OPEN AND AIRY three bedroom, two bath contemporary. Dramatic vaulted ceiling in sunken living room. Family room, updated kitchen, neutral decor. Deck. Bloomfield Hills Schools. \$139,900. (644-6300) B04634



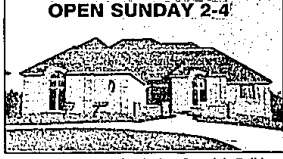
PRESTIGIOUS Bloomfield Village address for this four bedroom colonial. Dramatic interior with family room and library overlooking private rear yard. Updated kitchen with breakfast area. Large sun deck. \$275,000. (644-6300) B06737



CHARMING BIRMINGHAM RANCH on double lot. Freshly painted, hardwood floors, two bedrooms, 1½ baths, finished basement, newer furnace and central air. Two car garage. On one of our nicer streets. \$126,900. (644-6300) B06811



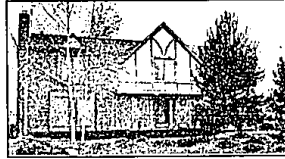
CHARACTER AND CHARM compliment this open floor plan colonial. Living room with fireplace. Newer furnace, electrical and roof. \$159,000. 22 Oakdale, Pleasant Ridge, S. of 10 Mile, W. of Woodward. (689-7300) S04212



BROOKWOOD II MODEL by Casadel Builders. Great room fireplace, library, 1st floor master. Yard overlooks natural area. Circular drive. \$450,000. 2627 Hunters Bluff, B.H. S. of Square Lake, E. of Opdyke. (644-6300) B06879



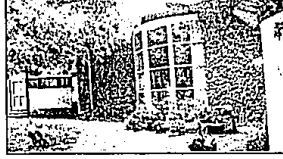
COUNTRY ESTATE in Bingham Farms on almost 3 acres with mature trees. Old-World charm and contemporary comfort blend together in this four bedroom, four bath home with family room, library, studio, sauna. (644-6300) B06889



SHARP 3 BEDROOM NOVI COLONIAL on premium site. Tired deck and brick walkway. Marble foyer, family room and original 4th bedroom made into master suite. Basement. Central air. \$248,900. (644-6300) B07723



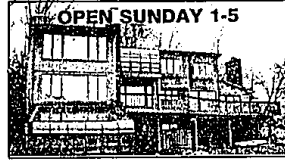
VERY PRIVATE LOCATION. Deck overlooks wooded ravine in Adams Woods condo. Finished lower level walk-out. Two fireplaces. \$212,900. 1288 Greenglen Ct., Bloomfield Hills, N. of Square Lake, W. of Adams. (689-7300) S05571



WALLACE FROST CONTEMPORARY with western influence. Vaulted ceilings soar above spacious rooms. Massive fireplaces. Beams, tile and brick floors. 3 bedrooms. Library, porch. City of Bloomfield Hills. (644-6300) B05300



VICTORIAN HOME with 140' frontage on prestigious Pine Lake. Over 2.7 total acres. Living room has original floor to ceiling windows, marble fireplace, 13x16 sun room with fireplace. 4-5 bedrooms, 3 baths. (851-5500)



UPPER LONG LAKE FRONT plus majestic vistas present themselves from almost every room. Walk-out lower level has greenhouse, spa room, 5 bedrooms. 2080 Bloomfield Woods, W.B. N. of Long Lake, E. of Middlebelt. (851-5500)



EXCELLENT FLOOR PLAN with bridge overlooking family room. Large kitchen leading to beautiful sun porch with ceramic tile floor, library with oak walls, 4 bedrooms, 2½ baths, 3 car garage. Rochester. \$359,500. (651-3500)



THIS BLOOMFIELD HILLS four bedroom colonial is a surprise! Large family room with fireplace, built-in wet bar, mirrored entertainment center, and get this: a solar room with hot tub, pool and more! \$258,500. (644-6300) B05404



BRAND NEW CUSTOM COLONIAL. Marble foyer, wood floors, breakfast room with skylights, library, family room, 4 bedrooms. Deep, treed lot. 2353 Heronwood, B.H. N. of Square Lake, W. of Telegraph. (644-6300) B07088



Weir, Manuel, Snyder & Ranke, Inc.

HOURS - weekdays from 8:30 in the morning until 8:00 in the evening. Saturday until 5:00 P.M. Sunday afternoons to 5:00 P.M.	298 South Woodward 7285 Orchard Lake Road 4700 Rochester Road 1205 West University Drive 498 South Main Street	Birmingham/Bloomfield Hills West Bloomfield/Farmington Hills Troy/Birmingham/Bloomfield Rochester/Rochester Hills Plymouth/Northville/Canton/Novi	• 644-6300 • 851-5500 • 689-7300 • 651-3500 • 455-6000
---	--	---	--