

**MAX  
BROOK  
INC.**  
**REALTORS**

**Birmingham**  
300 S. Woodward  
644-6700

**West Bloomfield**  
7011 Orchard Lake  
626-4000

**1895 .. 1993**  
*Continuing a Tradition of Excellence*

**Clarkston**  
27 S. Main Street  
625-9300

**Corporate/Relocation**  
74 W. Long Lake  
Bloomfield Hills  
647-2200 1-800-356-2130

**Bloomfield Hills**  
1133 W. Long Lake  
646-1400

**Rochester**  
850 W. University Dr.  
656-6500



## LAKEFRONT PROPERTIES



**Open Sunday 2-5 p.m.**  
**189 Ridgmont**  
S/Indian Lake, E/M-24

**ALL SPORTS INDIAN LAKE.** 1.8 acres of "Up North Setting." Spectacular views from the upper level and finished lower level walk-out. \$234,900 (ED-R-99RUD) Call 626-6500



**Open Sunday 1-4 p.m.**  
**3094 Loon Lake Rd.**  
S/Walton, E/Sashabaw

**LOON LAKE LAKEFRONT.** 6,700 sq. ft. of luxury. Features great room with natural plant atrium, fabulous island kitchen, 4 fireplaces, master suite with Jacuzzi. \$599,900 (ED-W-94LOO) Call 626-4000

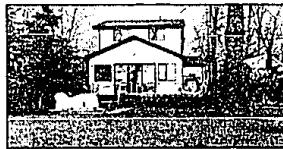


**Open Sunday 1-4 p.m.**  
**6559 Immensee**  
S/Coolley Lake, W/Union Lake

**ALL SPORTS LONG LAKE.** Charming lakefront features leaded glass, natural woodwork, neutral decor, natural fireplace, spacious deck, and 2 car garage. Updated throughout. \$159,900 (ED-W-59IMM) B12511 Call 626-4000



**GREEN LAKE FRONTAGE.** West Bloomfield Schools. Treat yourself to the best! 3,306 sq. ft. brick Colonial with unfinished walkout basement, 3-4 bedrooms, 4 baths. \$369,900 (ED-H-71ALD) B08291 Call 646-1400



**CASS LAKE SHORES.** Glistening water is serenely beautiful by moonlight and sparkling with activity in daytime. Recently built, 4 bedroom is large enough for your growing family. \$309,000 (ED-H-97GRA) B11826 Call 646-1400



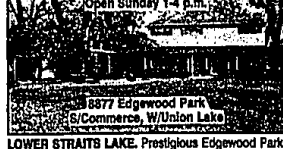
**Open Sunday 1-4 p.m.**  
**1583 Indianwood Ct.**  
N/Lochridge, W/Franklin

**FOREST LAKE.** Secluded lake property, Bloomfield Colonial on private road. Spectacular pool with waterfall. Updates throughout. 3-4 bedrooms, 4.5 baths, lower level walk-out. \$730,000 (ED-B-88IND) Call 644-6700



**Open Sunday 1-4 p.m.**  
**2870 Pine Lake**  
N/Long Lake Rd., E/Orchard Lake

**PINE LAKE FRONTAGE.** Magnificent country French Estate with 5 bedrooms, 4 baths, 2 fireplaces, hardwood floors, fabulous white jacuzzi kitchen with SubZero. \$899,000 (ED-W-70PIN) B10151 Call 646-4000

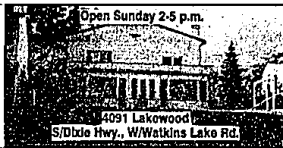


**Open Sunday 1-4 p.m.**  
**8877 Edgewood Park**  
S/Commerce, W/Union Lake

**LOWER STRAITS LAKE.** Prestigious Edgewood Park. 4 bedroom contemporary. 100 ft. of lake frontage. Backs to Edgewood Golf Course. Just reduced! \$399,900 (ED-W-77EDG) B12410 Call 626-4000



**MILL POND.** A rare find in historic Clarkston. Over 140 ft. frontage on the southern exposure. Spectacular new home features 3 bedrooms, sun room, gourmet kitchen. \$279,900 (ED-B-42HOL) B11234 Call 644-6700



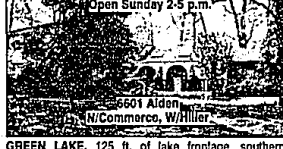
**Open Sunday 2-5 p.m.**  
**4091 Lakewood**  
S/Dixie Hwy., W/Watkins Lake Rd.

**ALL SPORTS WATKINS LAKE.** Gorgeous, private location. Master walk, hardwood floors, fabulous views. Endless potential. Directions: Dixie Hwy. to Watkins Lake Rd. to right on Lakewood. \$269,900 (ED-C-91LAK) Call 625-9300



**Open Sunday 1-5 p.m.**  
**7030 Willow Road**  
N/Commerce, W/Hillier

**WEST BLOOMFIELD - 174 ft. on UNION LAKE** with wide open views and sandy bottom. Ranch with major remodeling to please the most discriminating buyer. Shows like brand new! \$439,000 (ED-W-30WIL) B12441 Call 626-4000



**Open Sunday 2-5 p.m.**  
**6601 Alden**  
N/Commerce, W/Hillier

**GREEN LAKE.** 125 ft. of lake frontage, southern exposure, cement seawall and 40 ft. dock. 3,434 sq. ft. open floor plan with 4 bedrooms, study, family room. W. Bloomfield schools. \$395,000 (ED-H-01ALD) B99899 Call 646-1400



**Open Sunday 1-4 p.m.**  
**3609 Wards Point**  
S/N/Commerce, W/Orchard Lake Rd.

**CASS LAKE.** Vacation all year long. Beautiful sunsets and views, sandy lake bottom, safe swimming. Protected boat dockage in nearby outlet. West Bloomfield schools. \$565,000 (ED-H-09WAR) B10535 Call 646-1400



**LOWER LONG LAKE.** Secluded, spectacular lakefront. Private treed lot surrounds this 4 bedroom, 4 bath, Harold Turner contemporary. Views from every window. 3 fireplaces. \$1,650,000 (ED-H-39LOC) Call 646-1400



**WALNUT LAKE CONTEMPORARY.** 150 ft. frontage on all sports lake. Extraordinary home with lush landscaped yard. Open floor plan. Patio and deck with hot tub for entertaining. \$1,250,000 (ED-B-80INK) Call 644-6700



**Open Sunday 1-4 p.m.**  
**3618 Lochbend**  
N/Richardson, E/Newtown

**LOWER STRAITS LAKE FRONTAGE ESTATE.** Private, gated entry. 4,100 sq. ft. of luxury. Custom designed. Built in 1987. 120 ft. of sandy beach. \$699,000 (ED-W-15LOC) B11644 Call 626-4000



**Open Sunday 1-4 p.m.**  
**857 Pine Tree**  
N/Clarkston Rd., E/Joalyn

**ALL SPORTS LAKE ORION.** A real doll house! Recently remodeled interior and exterior. New well, roof, carpeting, and ceiling fans. "Great Investment." \$119,900 (ED-R-57PIN) Call 656-6500



**Open Sunday 2-5 p.m.**  
**10795 Oxbow Lake Shores**  
W/Hilland, E/Teggedrine

**OSBOW LAKE LAKEFRONT.** Transitional, open floor plan, great for entertaining. 4 bedrooms, great room, and library opening to multi-level decking to enjoy the lake view. Lot 128 ft. x 430 ft. \$350,000 (ED-W-650XB) Call 626-4000



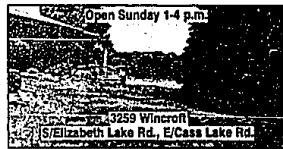
**Open Sunday 1-4 p.m.**  
**2274 Locklin Lane**  
N/Willow, W/Hillier

**UNION LAKE.** Spectacular lakefront home remodeled in 1988. Quality custom features include marble foyer, fireplaces, large master suite with Jacuzzi. West Bloomfield Schools. \$695,000 (ED-W-74LOC) B08612 Call 626-4000



**Open Sunday 1-4 p.m.**  
**2678 Lark Ct.**  
N/Commerce, W/Indian Trail

**CASS LAKE.** 1949, custom designed bi-level with westerly view. One acre with 162 ft. of sandy frontage. Huge decking and docking for 5 boats. Very energy efficient. (ED-W-76LAR) B07621 Call 626-4000



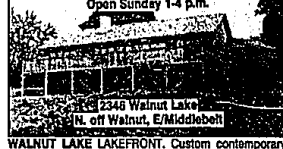
**Open Sunday 1-4 p.m.**  
**3259 Wincroft**  
S/Elizabeth Lake Rd., E/Cass Lake Rd.

**OTTER LAKE OPPORTUNITY.** Lovely ranch features walk-out, screened porch and deck overlooking 385 ft. seawall on all sports lake. Boat berths in seawall. Two fireplaces. \$395,000 (ED-B-59WIN) Call 644-6700



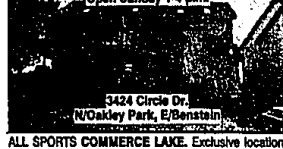
**Open Sunday 1-4 p.m.**  
**1465 Lochridge**  
N/Long Lake, W/Franklin

**LOWER LONG LAKE.** Spectacular view. Over 5,700 sq. ft. of living space including finished walk-out, 2 kitchens, 3.5 baths, 4 bedrooms, and large library. \$945,000 (ED-B-85LOC) B12013 Call 644-6700



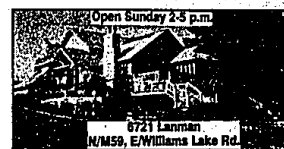
**Open Sunday 1-4 p.m.**  
**2346 Walnut Lake**  
N. off Walnut, E/Middlebelt

**WALNUT LAKE LAKEFRONT.** Custom contemporary located on 1.5 acres with fabulous view of all sports lake. Very open floor plan, 2-story ceilings, and exercise room. \$979,000 (ED-W-46VAL) B11774 Call 626-4000



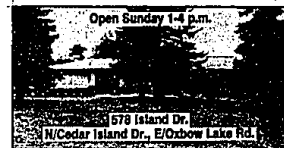
**Open Sunday 1-4 p.m.**  
**3424 Circle Dr.**  
N/Oakley Park, E/Benjamin

**ALL SPORTS COMMERCIAL LAKE.** Exclusive location. Open floor plan combined with soaring ceilings create beautiful living spaces. Master suite has sitting area. \$448,000 (ED-W-24CIR) Call 626-4000



**Open Sunday 2-5 p.m.**  
**6721 Lanman**  
W/M59, E/Williams Lake Rd.

**ALL SPORTS WILLIAMS LAKE.** Elegant executive home on beautiful private lake. Exceptional quality. Directions: M59 west to north on Williams Lake Rd. to right on Lanman. \$499,900 (ED-C-21LAN) Call 625-8300

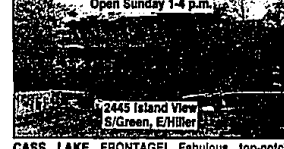


**Open Sunday 1-4 p.m.**  
**578 Island Dr.**  
N/Cedar Island Dr., E/Oxbow Lake Rd.

**ALL SPORTS CEDAR ISLAND LAKE.** 1,500 sq. ft. ranch with over 200 ft. of lake frontage. Beautiful sandy beach and 20x20 ft. dock. Custom island kitchen - ceramic tile. \$259,900 (ED-B-76ISL) B08639 Call 644-6700



**VIEW OF PRIVATE GREEN LAKE.** Contemporary walk-out waterfront ranch offers 2 large rear docks, updated upper level kitchen, new lower level kitchen and bath. \$379,900 (ED-H-40COM) B10815 Call 646-1400



**Open Sunday 1-4 p.m.**  
**2445 Island View**  
S/Green, E/Hillier

**CASS LAKE FRONTAGE!** Fabulous top-notch contemporary with vaulted ceilings. Sloping, private lot to lake. Walk-out lower level. Pool with whirlpool. 5 bedrooms, 3 full and 2 half baths. \$665,000 (ED-B-45ISL) Call 644-6700



**Open Sunday 1-4 p.m.**  
**1601 Rustic Lane**  
N/Orchard Lake, E/Cass Lake

**SHARP SYLVAN LAKE FRONTAGE.** Dock your boat right outside your door on this all sports lake. New white kitchen opens to 2-story great room with fireplace. \$289,900 (ED-B-31RUS) B10689 Call 644-6700



**Open Sunday 2-5 p.m.**  
**1865 Harvest Lane**  
N/Long Lake, E/Middlebelt

**SHOREWOOD LAKE.** Spacious, lakefront, California, custom-built, approximately 4,700 sq. ft. in park-like setting. Bloomfield Hills Schools. 4 large bedrooms, 3.2 baths. \$479,900 (ED-H-65HAR) B06589 Call 646-1400



**Open Sunday 1-4 p.m.**  
**5011 Elmgate**  
N/Pentecost Trail, W/Orchard Lake

**UPPER STRAITS LAKE FRONTAGE.** Wonderful views from every angle. Custom kitchen, exposed hardwood floors in family room. Library, lower level walk-out. \$990,000 (ED-H-11ELM) B06396 Call 646-1400



**Open Sunday 1-4 p.m.**  
**1225 E. Lake Dr.**  
S/Fourteen Mile, W/Docker

**WALLED LAKE.** Great for entertaining! Enjoy the beach and lakfront views from this totally redone home that has many extras. Luxurious! \$309,900 (ED-B-25LAK) B10794 Call 644-6700