

COMMISSIONERS
PROCEEDINGS

Special meeting of the Commissioners of the City of Farmington held January 19, 1928.

Called to order by Mayor Butterfield at 8:45 p. m.

Present, Bickling, Gildemeister, Staman, Johnson and Hogle.

Moved by Bickling, seconded by Gildemeister that the Commission appoint Mayor Butterfield as a committee to meet with a like committee of the Board of Education and an attorney to prepare a lease of the water works land and submit the same to the Board of Education, such land to be known as the athletic park and to be used for athletic sports, games, etc. Carried.

N. H. POWER, Clerk.

Miss Ethel Corley and James Elverson of Deal, Eng., eloped to marry, swimming a river to reach a minister's home.

As the congregation in the South Side church in Chicago was singing "Lead, Kindly Light," all the lights went out, and candles were used to finish the service.

STATE OF MICHIGAN,

The Probate Court for the County of Oakland.

At a session of said Court, held at the Probate Office in the City of Pontiac, in said County on the 17th day of January, A. D. 1928.

Present, Hon. Dan A. McGaffey, Judge of Probate.

In the Matter of the Estate of DONALD J. BANFIELD, Deceased.

Marion B. Banfield, having filed in said court a petition praying said estate be granted to George Gildemeister, or to some other suitable person.

It is Ordered, That the 14th day of February, A. D. 1928, at 8 o'clock in the forenoon, at said probate office be and is hereby appointed for hearing said petition.

It is Further Ordered, That public notice thereof be given by publication of a copy of this order once each week for three successive weeks previous to said day of hearing, in the Farmington Enterprise a newspaper printed and circulated in said county.

DAN A. MCGAFFEY, Judge of Probate.

A true copy, Florence Doty, deputy register of Probate.

Jan 19-Feb 2

MORTGAGE SALE

Default having been made in the conditions of a certain mortgage made by Melvina Pickett, a widow of the village of Farmington, Mortgagor, and John Bollens and Marie Bollens, his wife of the village of Farmington, Michigan, dated the 19th day of July, 1925 and recorded in the office of the Register of Deeds for the County of Oakland, State of Michigan, on the 14th day of July, 1925 in Liber 568 of Mortgages

Satisfaction Guaranteed

For many years, men and women everywhere have been using and recommending

Foley Pills

A diuretic stimulant to the kidneys

Quick to relieve

Try them

Sold Everywhere

on pages 81-4 and by reason of the said default the power of sale contained in said mortgage having become operative, on which mortgage there is claimed to be due at the date of this notice for principal and interest, the sum of \$1492.24 and an attorney fee as provided by law, and no proceedings at law having been instituted to recover the money secured by virtue of the power of sale contained in said mortgage and the statute in such case made and provided, the said mortgage will be foreclosed by a sale of the mortgaged premises at public vendue, to the highest bidder, at the Eastern or Saginaw Street entrance to the Court House in the City of Pontiac, Michigan, that being the place where the Circuit Court for the County of Oakland, State of Michigan, is held, on the thirty-first day of

March A. D. 1928 at nine o'clock in the forenoon Central Standard Time:

The description of which said premises contained in said Mortgage is as follows:

All the lands, premises and property situated in the village of Farmington, County of Oakland and State of Michigan, to-wit: Lots 4 and 5 of Picketts subdivision, or part of the west half of the northeast quarter, Section 28, Town 1 North, range 9 east, in-village of Farmington, according to Plat thereof as recorded in Liber 26 of plats, page 11 Oakland County Registers Office.

Dated January 5, A. D. 1928.

Marie Bollens.

John J. Schulte, Jr., Attorney for Marie Bollens Peoples State Bank Bldg. Farmington, Michigan,

5Jan-Mar 29

To The Public!

When you are looking for

Structural Steel, Ornamental Iron, Miscellaneous Iron

Get In Touch With Our Eastlawn Plant at Plymouth

General Machine & Iron Works

Phone, Glendale 6032 or Plymouth 511

MICHIGAN BELL
TELEPHONE CO.

Long Distance Rates are Surprisingly Low
... For Instance

for 50¢

Or Less, After 8:30 P. M.,

You can call the following points and talk for THREE MINUTES at the rates shown. Rates to other Michigan points are proportionately low.

From Farmington to:	Night Station-to-Station Rate
ADRIAN	.35
SAGINAW	.35
PORT HURON	.35
FLINT	.35
GRAND RAPIDS	.45
JACKSON	.35
KALAMAZOO	.40
LANSING	.35

The rates quoted above are Station-to-Station night rates, effective from 8:30 p. m. to 4:30 a. m.

A Station-to-Station call is one that is made to a certain telephone, rather than to some person in particular, which would be a Person-to-Person call.

If you do not know the number of the distant telephone, give the operator the name and address and specify that you will talk with "anyone" who answers at the called telephone.

Day rates, 4:30 a. m. to 7 p. m., and evening rates, 7 p. m. to 8:30 p. m., are higher than night rates.

A Person-to-Person call, because more work is involved, costs more than a Station-to-Station call. The rate on a Person-to-Person call is the same at all hours.

Additional rate information can be secured by calling the Long Distance operator



Captive Bears Love

Soda of Any Flavor

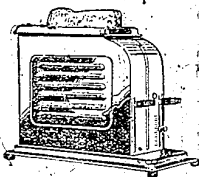
Government Lump, Or—As a lover of soda pop the average boy has nothing on a bear. If there is any difference it is on the side of the bear, who not only likes pop but wants and in some instances gets, lots of it.

There are two captive brown bears here, on the Mount Hood loop road. Week-end parties usually stop here, and the big-hearted members buy the two bears pop.

A hole is punched in the metal cap with an ice pick and it is placed within reach of the animals, which rear up on their haunches and suck at the bottle much in the manner of a nursing child.

If one bear has pop and the other none, then the neglected bear will moan and whine piteously until his wants are recognized.

The animals have no preference as to flavors, strawberry disappearing down their throats with about the same speed as lemon.

Automatic
TOAST MASTER

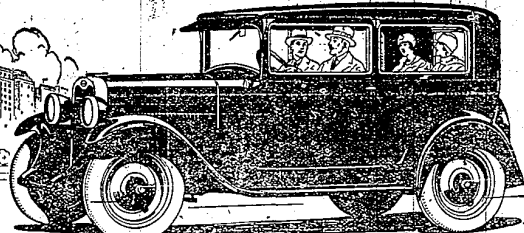
With this ingenious and very convenient type of breakfast-table appliance the hostess need never cast an inquiring, or perhaps anxious, eye on the progress of her toast-making.

The Electric Toast Master is automatic. You lay in your bread touch a little time-switch—and put the matter out of your mind. The Toast Master does the rest ... When the toast is made, the current immediately shuts off, and your toast is ready to serve.

You will be interested in looking at a TOAST MASTER in our office

THE DETROIT EDISON COMPANY

for Economical Transportation

New Beauty-New Comfort
New Performance!
an amazing revelation
in a low-priced car

The Roadster	\$495
The Touring	\$495
The Coupe	\$595
The Four-Door Sedan	\$675
The Sport Cabriolet	\$665
The Imperial Landau	\$715
Light Delivery (Chassis Only)	\$375
Utility Truck (Chassis Only)	\$495

All Prices f. o. b. Flint, Mich.

Built on a 107 inch wheelbase, 4 inches longer than before—offering new Duco-finished Fisher bodies whose distinction reveals the world famous mastery of Fisher craftsmen—providing the safety of four-wheel brakes, a new measure of comfort, thrilling new power, speed and smoothness—the Bigger and Better Chevrolet is being everywhere acclaimed as an amazing revelation in a low-priced car!

See this truly sensational automobile!

Note how the hood lines stream back from the higher radiator and blend gracefully into the body contours. Note the interior atmosphere of

richness and elegance. Check the chassis—and discover every feature of advanced engineering design demanded in the finest motor cars. Then go for a ride!

Experience the flashing get-a-way and marvelous smoothness of the improved valve-in-head engine with its new alloy "invar strut" pistons, and many other improvements. Travel rough roads and observe the cushioning effect of the new semi-elliptic shock absorber springs. Do that, and like tens of thousands of others, you will be amazed to learn that such a car can sell at such low prices!



Farmington Motor Sales

Phone 303

Farmington

QUALITY AT LOW COST