



EYES
EXAMINED
—
GLASSES
FILLED

Glasses Repaired While You Wait

HARRY O. MAURER, O. D.
Optometrist and Optician

9131 Grand River—at Joy Road—Opp. Sanders
Phones—Office Euclid 5448; Res. Cedar 1037R

MICHIGAN BELL TELEPHONE CO.

Long Distance Rates Are
Surprisingly Low

For instance:

for \$1.55

or less, between 4:30 a. m. and 7:00 p. m.

You can call the following points and talk for THREE MINUTES for the rates shown. Rates to other points are proportionately low.

FROM FARMINGTON TO:

Day
Station-to-Station
Rate

CHARLEVOIX, MICH.	\$1.55
CHERRYVALE, MICH.	1.55
CHICAGO, ILL.	1.55
CINCINNATI, OH.	1.55
CALY, IND.	1.55
HUNTINGTON, W. VA.	1.55
INDIANAPOLIS, IND.	1.55
LOUISVILLE, KY.	1.55
MILWAUKEE, WIS.	1.55
PITTSBURGH, PA.	1.55
ST. LOUIS, MO.	1.55
ST. PAUL, MINN.	1.55
WHEELING, W. VA.	1.55

The rates quoted above are Station-to-Station Day rates, effective from 4:30 a. m. to 7:00 p. m. Evening Station-to-Station rates are effective from 7:00 p. m. to 8:30 p. m. and Night Station-to-Station rates, 8:30 p. m. to 4:30 a. m. A Station-to-Station call is one that is made to a certain telephone rather than to some person in particular. If you do not know the number of the distant telephone, give the operator the name and address and specify that you will talk with "anyone" who answers at the called telephone. A Person-to-Person call, because more work is involved, costs more than a Station-to-Station call. The rate on a Person-to-Person call is the same at all hours.

Additional rate information can be secured by calling the Long Distance operator



WEST FARMINGTON Mrs. Irvin Knapp

FRIENDS HONOR FRANK MURRAY ON BIRTHDAY

About 30 relatives and friends gathered at the home of Mr. and Mrs. Frank Murray Thursday evening, the event being Mr. Murray's birthday. Progressive 500 was played, the high and low scorers being honored with prizes. The ladies prize for high score went to May Heliker and the gentleman's first prize went to Arthur Giestler.

The consolation prizes were taken by Mrs. Veeland and Charles Heliker. Lunch was served.

NEIGHBORS HELP WHEN BRUSH FIRE THREATENS

The Grimmer brothers had difficulty Monday morning in putting out a fire which got beyond control while they were burning brush. With the assistance of neighbors they succeeded in putting out the fire before it did much damage.

Mrs. Emma Kurtz is spending a few days with her parents at Plymouth.

Mrs. Marie Walters spent a few days last week visiting relatives in Detroit.

Mrs. Bert Krumm and Mrs. Charles Cow, Jr., spent Wednesday visiting friends in Detroit.

The girls of the West Farmington School have been playing baseball with the boys, the girls winning.

Several from this section attended the Junior play at Walled Lake, Friday evening.

Mrs. Emma Kurtz and daughter, Dorethea, spent Sunday afternoon with Mr. and Mrs. Harvey Robison.

A parliamentary drill meeting was held at the home of Mr. and Mrs. Charles Halstead Thursday evening with a good attendance.

Mr. and Mrs. Arthur Green spent last Saturday and Sunday with Mr. and Mrs. Upton at Oak Ridge. Mr. Upton was formerly superintendent of the Walled Lake School.

An agriculture meeting for boys was held at Nichols School Friday evening. The subject was "Bees."

Marley Bachelor and daughters Florence and Margie, visited William Graham Sunday.

Mr. and Mrs. Ray Howard and Miss Gertrude Korin spent Saturday in Pontiac.

Mrs. Sarah Murray and daughter and son, May and Edwin, spent Sunday with Mr. and Mrs. George Heliker.

Several from West Farmington attended the auxiliary dinner and landscape garden demonstration held at Isaac Bond's residence, Tuesday.

John German, who has been confined to his home on account of sickness all winter, made a visit to his farm, Friday.

Mr. and Mrs. Charles Shellenburg are spending a few weeks with their parents, Mr. and Mrs. Ernest Shellenburg.

William Tamm is driving a new car.

William Campbell, Guy Seeley, John Wedow, William Wedow, and Elmer French are wiring their buildings for electric lights. The Edison Company are continuing their line on the Fourteen-mile road.

Orlye Bachelor has moved from Detroit to the Bachelor farm at West Farmington.

Mr. and Mrs. Charles Heliker attended the senior play at Hartland, Friday evening. Graham Giegler took part. Mr. Giegler was a former resident of West Farmington.

Mr. and Mrs. Marley Bachelor are the proud parents of a baby girl, born Tuesday April 17. Marquito Wixom and Albert Riley attended the Senior play at Hartland Saturday evening, as did Mrs. Emma Kurtz and daughter, Dorethea. Mr. and Mrs. Charles Shellenburg are the parents of a baby boy.

When the Siren Screams

HAVE you ever been awakened from sleep by a fire alarm and heard the apparatus go thundering and clanging by?

There is always the sense of relief that it's not your house. But what if some day it is? Are your valuable papers and other possessions safe?

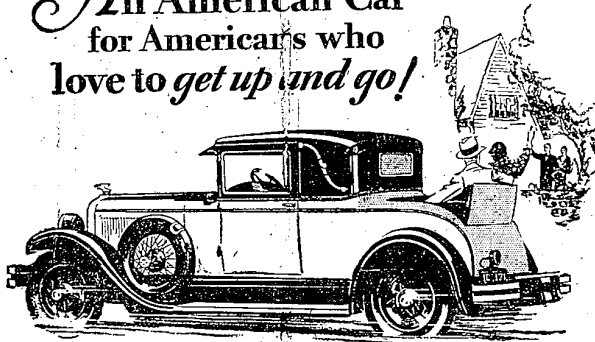
For a few cents a week you can rent a safe deposit box here. Your valuables will be safe from fire, safe from loss, safe from the prowlers of the night.



Farmington State Savings Bank

"The Old Bank on the Corner"

An American Car
for Americans who
love to get up and go!



The Cabriolet • Body by Fisher

You know the feeling. Wanderlust... the urge to get up and go. To see new places and new faces. To drive as far and as hard as you like.

When you feel the urge to wander... that's when you'll appreciate this All-American Six... this staunch, powerful brute of a car... capable of withstanding the hardest pace.

With its big, smooth, silent engine... providing an abundance of drive and snap. With its rugged frame... its 117-inch wheelbase... self-adjusting clutch... instant-action four-wheel brakes.

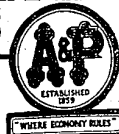
Here's the very car for you when you answer the call of the road. Come in and try one. Drive it an hour... and you'll want it for your own.

2-Door Sedan, \$1045; Landau Coupe, \$1045; Sport Roadster, \$1075; Phaeton, \$1075; 4-Door Sedan, \$1145; Cabriolet, \$1155 (wire wheels, spare tires and bumpers extra); Landau Sedan, \$1265; Vista Series Pontiac Six, \$745 to \$975. All prices at factory. Delivered prices include minimum handling charges. Easy to pay on the General Motors Time Payment Plan.

FARMINGTON OAKLAND-PONTIAC SALES
Phone 337 Cor. Division & State Sts.

OAKLAND
ALL-AMERICAN SIX
PRODUCT OF GENERAL MOTORS

SPECIAL PRICES ON HOUSECLEANING ITEMS



Pails	10 Quart, Galvanized Substantial	each	19¢
Super-Suds	Colgates	3 pkgs	25¢
Brooms	Very Special Purchase	each	29¢
Soap	P&G, Kirk's Flake or Crystal White Soap	10 bars	38¢
Soap Chips	Bulk	2 lbs	25¢
FelsNaptha Soap		10 bars	49¢
Olivilo	Toilet Soap	3 cakes	19¢
Tomatoes	Standard Grade	6 No. 2 cans	45¢
Jell-O	All Flavors	4 pkgs	29¢
Fig Bars	Whole Wheat	lb	10¢

Welch's Grape Juice
Jam
Whole Wheat Bread
All 5c Candy Bars
Kellogg's Corn Flakes or Post Toasties
Pet or Carnation Milk
Fudge
Caramels

pt. bot. 27c
43-oz. jar 43c
loaf 8c
3 for 10c
pkg 10c
tall can 10c
lb 33c
lb 29c

THE GREAT ATLANTIC & PACIFIC CO.
ESTABLISHED 1859