

Snyder, Kinney Bennett, & Keating, Inc.

REALTORS Since 1932

Birmingham, Michigan 48009-6300

(313) 644-7000

348 East Maple Road

**IN THE MANNER OF CRANBROOK**

Architecturally significant and magnificent 3.6 acre grounds with pond! Much Bloomfield history is here in this 4 bedroom, 4.5 bath 1926 English. A very important property. \$1,200,000

**ADAMS CASTLE DRIVE**

Wonderful family home with four bedrooms, 2.5 baths. Completely renovated in 1993. New kitchen, new roof, furnace and central air. New ceramic tile in large foyer, hardwood floors throughout. \$339,000

**OPEN SUNDAY 2-5**

863 Bates

N. of Lincoln, W. of Woodward

ONE OF BIRMINGHAM'S PREMIER STREETS
Charming inside and out! Open floor plan with large fireplace living room and gracious over-sized dining room. Three bedrooms, 2.5 baths. Remodeled kitchen and beautifully decorated and maintained \$178,000

**WESTCHESTER VILLAGE**

Three bedroom, 1.5 bath ranch located in prime area. Large master with half bath, updated kitchen, family room, all appliances, updated bath, new carpet, new interior decor. Lease with option available. \$189,900

**ABSOLUTE MOVE-IN CONDITION**

With remodeled kitchen, bath, all windows, door and sliding doorwall. New flooring and carpet throughout. Three bedrooms, 1.5 baths, 2 fireplaces and partial basement. \$158,999

**OPEN SUNDAY 1-4**

5003 Coventry

N. of 14 Mile, W. of Crooks

ROYAL OAK COVENTRY TOWNHOUSE
Move-in condition. Three bedrooms, 1.5 bath townhouse with fireplace in family room. Newer carpeting throughout. Updated designer bath. Pool and clubhouse. \$87,900

**END UNIT CONDO**

Contemporary floor plan. Three bedrooms, 3 baths, master suite has bath and walk-in closet. Upgraded carpeting, marble fireplace, vaulted ceilings. Great location. \$122,500

**OPEN SUNDAY 2-5**

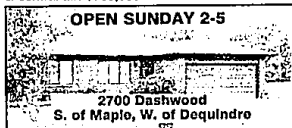
1351 Cedar Bend

S. of Long Lake, E. of Franklin

HILLTOP SETTING
Spectacular open floor plan with dramatic high ceilings with skylights. Hardwood floors throughout. Fireplace in living room, family room and master bedroom. Beautiful landscaped yard with pool and deck. \$369,900



ESTATE SECTION OF BLOOMFIELD VILLAGE
Spacious family home with 5 bedrooms, 4.5 baths on over an acre of beautiful property with swimming pool and extensive decking. Updates including sprinkling systems, furnace & central air. \$789,900

**OPEN SUNDAY 2-5**

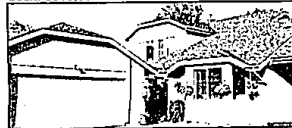
2700 Dashwood

S. of Maple, W. of Dequindre

CLOSE TO EVERYTHING
Troy ranch with open floor plan. Central air, security system, deep lot with storage shed. Professionally landscaped. Basement, fireplace and all appliances. Three bedrooms, 1.5 baths. \$123,900

**QUARTON LAKE ESTATES**

Beautifully maintained and cared for home with 5 bedrooms, 3 baths, family room and library. Open floor plan, great for entertaining. Well maintained landscaping with patio & deck. \$310,000

**WABEEK ON THE GREEN**

Beautiful views of Wabek Golf Course. Two or three bedrooms, 2.5 bath condo. Atrium entrance, basement and 2 car garage. Excellent opportunity. \$169,900

**OPEN SATURDAY 2-4**

735 S. Main

S. of 14 Mile, E. Side of Main

IN THE HEART OF TOWN!
Wonderful main street location. Zoned office, however, can remain residential. Original owner, built to last. Gorgeous fireplace in spacious living room. Four bedrooms, 2 full baths, eat-in kitchen. \$110,000

**PLEASANT STREET, THE BEAUTIFUL**

On a tree-lined avenue in premiere Birmingham neighborhood is this handsome three bedroom brick colonial. Features include updated kitchen, 1.5 baths, family room and living room with fireplace. \$220,000



DESIRABLE BLOOMFIELD CROSSING TUDOR
Corner lot, circular drive, 3+ car garage, 4 bedrooms, large family room with cathedral ceiling and brick fireplace. Hardwood floors, designer kitchen, sweeping staircase, partially finished basement. \$487,000



BLOOMFIELD HILLS LAKE FRONT
Very attractive walk-out ranch on Kern Lake. Four bedrooms, 3.5 baths, family room, 2 fireplaces, sauna, large kitchen, alarm, sprinkler system, gorgeous lakefront lot. A must see! \$349,900

**OPEN SUNDAY 2-5**

2104 Park Circle

N. of Orchard Lake, W. of Cass Lake

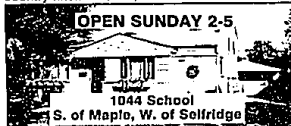
BREATH-TAKING VIEWS
On all sports lake. Newer 3 bedroom home with cathedral ceilings, fireplace and 2 full baths. Freshly painted with neutral interior and new carpet throughout. \$142,900

**LAND CONTRACT AVAILABLE**

Newly painted with new carpet and window treatments. New almond kitchen cabinets. Two bedrooms, 1.5 baths. Wonderful location, close to expressways, etc. \$102,000

**BINGHAM WOODS CONDO**

Backing to ravine. Wooded quiet location. Beautifully decorated with marble foyer, circular staircase. Large master bedroom with deck plus 2 additional bedrooms, 2.5 baths, country kitchen. \$269,000

**OPEN SUNDAY 2-5**

1044 School

S. of Maple, W. of Selfridge

NORTH CLAWSON
Tri-level with three bedrooms, 1.5 baths and two car garage. New windows, carpeting and kitchen. Very clean and well-maintained. Move-in condition. \$99,900

**STRATFORD PLACE**

Spacious free-standing ranch model with full walk-out and gorgeous ravine views. Three bedrooms, 3 baths, 2 half baths, library and family room. Exceptional Bloomfield Hills setting & location. \$349,000

**GORGEOUS LOT**

Immaculate 4 bedroom, 2.5 bath colonial. Family room with fireplace. Florida room. Situated on 1.36 wooded acres. Large kitchen, 2.5 car attached garage, wet plaster, 6 panel doors, cove ceiling. \$269,500

**BERKLEY RANCH**

Excellent neighborhood. Three bedroom ranch with newer roof, furnace, windows and garage. Florida room. \$83,500



WING LAKE FRONT, BLOOMFIELD HILLS
Fabulous upscale ranch with gorgeous lake views! Features three bedrooms, 2.5 baths, family room and premium kitchen with all amenities. Lovely grounds with privacy & maturity. Bloomfield Hills schools. \$670,000

**OPEN SUNDAY 2-5**

1820 Long Point

S. of Squak Lake, E. of Middlebelt

BEAUTIFUL HILLTOP SETTING
Overlooking Upper Long Lake. This was the builder's own custom built home. Four fireplaces, master suite, rec room with bar, separate workshop building with dog run. \$274,000



BLOOMFIELD HILLS, GILBERT LAKE, LONE PINE ESTATES
An architecturally superb family home with three bedrooms, 2.5 baths, first floor master site and finished lower level plus room for expansion. One acre plus with Gilbert Lake privileges. \$585,000

**WEST BLOOMFIELD CONTEMPORARY**

Newly decorated and ready to move in. Bright and open floor plan. Cathedral ceiling; wet bar. Fireplace in family room. Great kitchen with large breakfast room. Circular drive. \$315,000

**PRIVATE ESTATE**

Describes this 1.63 acre setting. Wonderful use of fieldstone and slate. A great home for entertaining with a 30 ft. living room with vaulted ceilings. Four bedrooms, 4.5 baths, dining room & den. \$529,000

**TOBOCMAN LAKEFRONT**

All of the ingredients are here in this magnificent contemporary! Award winning architecture and a spectacular Gilbert Lake setting. Features five bedrooms, 3.5 baths. \$1,495,000

**LARGE COLONIAL - BEAUTIFUL LOT**

Walk to Brother Rice and Marian. Lovely 4 bedroom, 2.5 bath colonial with family room, kitchen with eating space, dining room, central air. Lovely yard with deck & patio. \$239,900

**VETERANS - ZERO DOWN**

If you qualify, you can buy this three bedroom brick Troy ranch with family room, fireplace, full basement and oversized 2 car garage. \$102,000.

**CONTEMPORARY RANCH**

Three bedroom, 2 baths, formal dining room, cathedral ceilings, skylights, custom plantation shutters throughout. Large master bedroom with whirlpool. Partially finished basement. Great landscaping & deck. \$245,000

Our 60th Year of providing the finest real estate services.