

EXHIBITIONS

Send calendar items about Oakland County art gallery exhibitions to The Observer, 805 E. Maple, Birmingham 48009, fax 644-1314. Send items about Wayne County exhibitions to The Observer, 36251 Schoolcraft, Livonia 48150, fax 591-7279. Attention: Creative Living editor.

G.R. N'AMDI GALLERY
Friday, Oct. 22 — "Pictorial: Argentine Painters of the '90s" will continue to Nov. 28. Reception for the artists 6-9 p.m. Friday. Eight of the featured artists — Tomas Clusculius, Daniel Garcia, Graciela Hasper, Magdalena Jirik, Mauro Machado, Tullio de Sanguisual, Jorge Simoes and Julian Trigo — will take part in an open forum 3 p.m. Saturday, Oct. 23, in the Detroit Institute of Arts Lecture Hall. Hours are 11 a.m. to 5:30 p.m. Tuesday-Saturday, 1-4 p.m. Sunday, 161 Townsend, Birmingham, 484-2700.

BIRMINGHAM BLOOMFIELD ART ASSOCIATION
Friday, Oct. 22 — The 1993 BHAA Faculty Exhibition will run to Nov. 13, showing the diversified works of 69 faculty members. Opening reception 4:30-6:30 p.m. Friday, at which BHAA instructor Leslie Masters will sign her new book, "How to Paint a Rainbow," a complete artist's handbook. The display will include realistic paintings by Michael Mahoney, Karen Wystra and Karen Carter Van Camper, ab-

stract art by Lorraine Chambers-McCarthy and Donald Ghech; ceramics by Jan Sudowski, Gary Richmond, Linda Norton Savell and Blaine Dixon; intricate enamels by Bob Fisher; realistic watercolors by Mary Aro and Shirley Gower and abstract works by Sonia Molnar. Also, paintings by French artist Madeleine Ginot are exhibited to Oct. 30. In brilliant colors, Ginot portrays scenes of daily life, marketplaces and landscapes of the South of France. Her paintings convey her own fascination in people interacting at work, in the streets, at markets and in cafes. Hours are 9:30 a.m. to 4:30 p.m. Monday-Saturday, 1516 S. Cranbrook Road, Birmingham, 644-0866.

CAMBRIDGE GALLERY
Friday, Oct. 22 — The gallery's fall exhibition and sale features paintings, ceramics, clay, glass, pastels, fiber art, textiles and jewelry. Open house Friday. Appointments for private showings available Oct. 23 to Nov. 7. The gallery is at 10 Cambridge, Pleasant Ridge, Call 548-7630.

JEAN PAUL SLUSSER GALLERY
Friday, Oct. 22 — An exhibit of recent work by distinguished University of Michigan alumnus William Lewis in conjunction with the 1993 Distinguished Alumnus Award, continues through Oct. 22. Award presentation and special lecture by the artist 3:30-5 p.m.

Friday at the School of Art, Room 2104, followed by a reception at the gallery 6-6 p.m. Hours are 11 a.m. to 5 p.m. Tuesday-Saturday, Art and Architecture Building, U-M School of Art, 2000 Bonisteel Blvd., Ann Arbor, 764-0397.

RED EYE BOOKS
Friday, Oct. 22 — An exhibit by Roger Hayes, from Galerie Jacques in Ann Arbor, will continue through December at 22018 Harper in St. Clair Shores. Opening reception 8-10 p.m. Friday. Call 776-3760.

THE COMMUNITY HOUSE
Thursday-Sunday, Oct. 21-24 — The eighth annual Our Town Art Exhibition and Sale presents works by 199 artists from around Michigan. Special events include a luncheon with a tour of private art collections in the Birmingham-Bloomfield area, a party with live jazz, a children's workshop and an artists reception and awards ceremony. Exhibit hours are 10 a.m. to 5 p.m., 380 S. Bates, Birmingham. Admission to the show is free. Call 644-5832 for special events information and reservations.

ART AND GIFT FAIR
Friday-Saturday, Oct. 22-23 — A variety of artwork and gift objects by Michigan artists (including artists from Birmingham, Bloomfield Hills, Farmington Hills, Rochester, Troy, West Bloomfield and Plymouth) will be featured in the Village Players theater building at Chestnut and Hunter in Birmingham. Hours are 10 a.m. to 6 p.m. Saturday, a gala champagne reception 6-10 p.m. Friday. Proceeds will benefit the playhouse renovation fund. Call 540-2465 for information.

MUSEUM OF ART
To Nov. 28 — "From Mother Earth: Pueblo Pottery Along the Rio Grande," a selection of black ware pottery from the prehistoric of Santa Clara and San Ildefonso, with works by Maria Martinez and other renowned potters, is featured. Also, photo-collage works by Dada artist Hannah Hoch are shown to Nov. 28, and German expressionist graphics from the museum collection are displayed to Dec. 5. Events related to the Hoch exhibit are tours Oct. 24 and 31 and a lecture Nov. 19. Call for information. Hours are 10 a.m. to 5 p.m. Tuesday-Saturday, noon to 5 p.m. Sunday, 525 S. State, Ann Arbor, 764-0355.

CREATIVE ARTS CENTER
Through Oct. 21 — An exhibit of work by eight Latin American artists commemorates Hispanic Heritage Month while acknowledging and celebrating the Year of the Indian. Hours are 10 a.m. to 4 p.m. Tuesday-Friday, 47 Williams, Pontiac, 333-7849.

HABATAT GALLERIES
Through Oct. 23 — Laminated, cut and polished glass and granite sculpture by American artist Wil-

iam Carlson, and colorful, fused sculpture by master Australian artist Klaus Moje, are exhibited. Hours are 10 a.m. to 6 p.m. Tuesday-Saturday, 32255 Northwest Highway, Farmington Hills, 551-3090.

PRESTON BURKE GALLERY
Through Oct. 23 — "Moonlight Madness — And All That Jazz," an exhibit of new paintings by Maximilian Shyne, continues. Hours are 10 a.m. to 6 p.m. Monday-Friday, to 9 p.m. Thursday, to 5 p.m. Saturday, in the Halsted Village Center at 12 Mile and Halsted in Farmington Hills, 488-0200.

THE WEYSMAN COLLECTION
Through Oct. 23 — Large, figure-like forms by Norma Minkowitz, a sculptor working in a craft medium, are exhibited. Hours are 11 a.m. to 5 p.m. Tuesday-Saturday, 132 N. Woodward, Birmingham, 645-6212.

ROBERT KIDD GALLERY
Through Oct. 23 — An exhibit of monotypes by Helen Frankenthaler continues. Gallery hours are 10:30 a.m. to 5:30 p.m. Tuesday-Saturday, 107 Townsend, Birmingham, 642-5905.

GOOVE GALLERY AND BOUTIQUE
To Oct. 23 — "Faith, Fish, Flesh: have cascading manes. The heads were worn in a play.

Natural objects are put to creative use in some of the works. Feathers accent masks by Nancy Hummel of East Lansing. January Knoop of Cincinnati uses cattle ribs, a horse's pelvis and hooves to make a mask. In other pieces, paintings, photos and collages feature mask images.

Colorful quilts
The Ariana Gallery, 386 E. Maple in Birmingham (call 647-6405), is displaying torn and stitched watercolor constructions by Kate Ward Thacker to Nov. 1. The pieces are paper quilts that shimmer and shine in vibrant combinations.

"Fanfare I" is a square with a colorful fan in each corner. "The Tale" and "Lions and Tigers and Bears" look like rows of ties, with fish on the former and "Wizard of Oz" characters on the latter.

Other pieces consist of patterns of geometric shapes, or look like structures such as a palace. The abstract arrangements seem to

move within their frames.

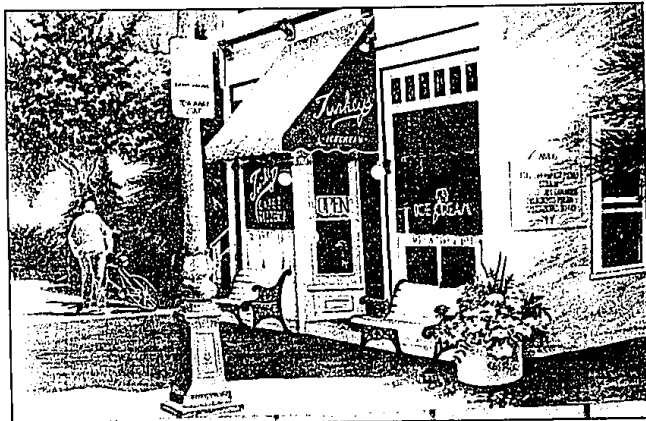
Executive privilege
A show of watercolor monotypes by area artists had a chief of state for a visitor.

The display is at the Henry Ford Centennial Library in Dearborn through Oct. 28. Governor John Engler happened to be at the library at the beginning of the exhibit and previewed it, walking and talking with show sponsor Lily Dudgeon for about 20 minutes.

Dudgeon teaches monotype printmaking at the Birmingham Bloomfield Art Association and the Visual Arts Association of Livonia. The exhibit features works by artists who have attended her workshops. Among them are Dottie Silevitz of West Bloomfield, Betty Sylvester of Birmingham, Marcia Tournay of Troy, Audrey Harkins and Marge Mask of Livonia and Connie Lucas of Canton.

Mary Klemie is editor of the Oakland County Creative Living section. You may call her at 901-2569. Her fax number is 644-1314.

Perspectives from page 1D



'Turkeys Again?': This work by Donna Vogelheim of Farmington is one of the works in the Our Town Art Exhibition and Sale at The Community House in Birmingham. The show and related events are taking place through Sunday.

Our Town set for visit

The eighth annual Our Town Art Exhibition and Sale continues through the weekend at The Community House, 380 S. Bates in Birmingham.

Hours are 10 a.m. to 5 p.m. Thursday-Sunday. Admission to the show is free. For more information, call Leslie Droleat at 644-5832.

This year's Our Town features 325 pieces by 199 artists from around Michigan. The exhibit was juried by Allen Rubiner of the Rubiner Gallery of West Bloomfield. All of the art work is for sale, ranging in price from \$50 to \$20,000. Proceeds from the sale and special events will benefit The Community House.

Special events include an Evening of Art and Jazz 6-10 p.m. Friday, a children's workshop 9:30-11 a.m. Saturday (cost \$5) and an award ceremony 5 p.m. Sunday. Reservations are required for special events. Call Chris Nightingale at 644-5832.

1st Metro MORTGAGE

30 yr. FIXED - 6.625% A.P.R. 6.85%

15 yr. FIXED - 6.125% A.P.R. 6.35%

1 Year Arm - 3.875% A.P.R. 5.4%

0 Closing Cost Loans Available

\$200 OFF Closing Costs With This Ad

CALL LOU BOUDREAU • 851-3440
5635 W. MAPLE • WEST BLOOMFIELD

SECURITY home loan

Mt. Clemens • Troy • Southfield • Walled Lake
"Call us after you have called everyone else"

The Best Jumbo And
Conforming Rates
In Metro Detroit.
We Will Not Be Undersold!

CALL 1-800-968-2019 NOW
FOR THE BEST RATES

* RATES SUBJECT TO CHANGE WITHOUT NOTICE
NO INTEREST ADJ. NO ESCROW FEES. CALL FOR
DETAILS. AVAILABLE ON ALL LOANS

EXPLORE A NEW CAREER
Where Effort = Income
One Hour Could Change Your Life
Wednesday Evening 7 P.M.
Limited Seating — Call TODAY

299-6200
LIFE OFFICER & BROKER
OWNED AND OPERATED

Century 21 East, Inc.
2700 South Rochester Road
Rochester Hills, Michigan 48067
299-6200

1992 CENTURY 21 International Award Winning Office



STATELY PRESTIGIOUS COLONIAL. In newer sub. Decorated to perfection, loaded with extras. Excellent floor plan. Gourmet kitchen, library, large rooms. \$249,900 (480TH) 299-6200



OPEN SUNDAY, OCTOBER 24, 1-4 P.M. Beautiful ranch condo end unit with 2 car attached garage, custom designed great room with natural fireplace, formal dining, 1st floor laundry, 3 full baths, finished basement. \$136,500 (220LN) 299-6200



SOCIAL ACCEPTANCE. Beautiful Tudor located in Rochester Hills' most welcoming area. The home is unsurpassed in quality and attention to detail. On Clinton River it's the perfect executive home. \$379,900 (2100LN) 299-6200



SHARP TUDOR WITH CONTEMPORARY FLAIR. Amenities include ceramic foyer, bay windows, fireplace, cathedral ceiling in master bedroom, main bath has skylight over garden tub. Finished lower level. \$164,900 (35KENT) 299-6200



HOBBY-HAVEN BASEMENT AND GARAGE. Cuddle up in front of the glowing fire in the living room of this Rochester Hills ranch with laundry room, built-in built-in counters and storage areas, central air. \$92,500 (220LN) 299-6200



ROOM TO ROOM. Never roof, never furnace, new kitchen cabinets with dishwasher, all appliances including washer and dryer. Huge garage, laundry room with built-in counters and storage areas, central air. \$92,500 (220LN) 299-6200

MORTGAGE RATE UPDATE				For FREE Rate Updates By Phone, FAX or Mail Call 1-313-358-9270			
LOAN	RATE	TERM	APR	LOAN	RATE	TERM	APR
ADVANCE MORTGAGE CORP.	332-8800			LANDSALL MORTGAGE CORP.	740-2423		
30 yr. 1st	6.50	30 day	6.50%	15 yr. 1st	6.25	30 day	6.25%
15 yr. 1st	6.00	30 day	6.00%	15 yr. 2nd	6.00	30 day	6.00%
10 yr. 1st	5.75	30 day	5.75%	10 yr. 2nd	5.75	30 day	5.75%
5 yr. 1st	5.50	30 day	5.50%	5 yr. 2nd	5.50	30 day	5.50%
30 yr. 1st	6.75	30 day	6.75%	30 yr. 1st	6.75	30 day	6.75%
15 yr. 1st	6.25	30 day	6.25%	15 yr. 1st	6.25	30 day	6.25%
10 yr. 1st	5.75	30 day	5.75%	10 yr. 1st	5.75	30 day	5.75%
5 yr. 1st	5.50	30 day	5.50%	5 yr. 1st	5.50	30 day	5.50%
30 yr. 1st	6.75	30 day	6.75%	30 yr. 1st	6.75	30 day	6.75%
15 yr. 1st	6.25	30 day	6.25%	15 yr. 1st	6.25	30 day	6.25%
10 yr. 1st	5.75	30 day	5.75%	10 yr. 1st	5.75	30 day	5.75%
5 yr. 1st	5.50	30 day	5.50%	5 yr. 1st	5.50	30 day	5.50%
30 yr. 1st	6.75	30 day	6.75%	30 yr. 1st	6.75	30 day	6.75%
15 yr. 1st	6.25	30 day	6.25%	15 yr. 1st	6.25	30 day	6.25%
10 yr. 1st	5.75	30 day	5.75%	10 yr. 1st	5.75	30 day	5.75%
5 yr. 1st	5.50	30 day	5.50%	5 yr. 1st	5.50	30 day	5.50%
30 yr. 1st	6.75	30 day	6.75%	30 yr. 1st	6.75	30 day	6.75%
15 yr. 1st	6.25	30 day	6.25%	15 yr. 1st	6.25	30 day	6.25%
10 yr. 1st	5.75	30 day	5.75%	10 yr. 1st	5.75	30 day	5.75%
5 yr. 1st	5.50	30 day	5.50%	5 yr. 1st	5.50	30 day	5.50%
30 yr. 1st	6.75	30 day	6.75%	30 yr. 1st	6.75	30 day	6.75%
15 yr. 1st	6.25	30 day	6.25%	15 yr. 1st	6.25	30 day	6.25%
10 yr. 1st	5.75	30 day	5.75%	10 yr. 1st	5.75	30 day	5.75%
5 yr. 1st	5.50	30 day	5.50%	5 yr. 1st	5.50	30 day	5.50%
30 yr. 1st	6.75	30 day	6.75%	30 yr. 1st	6.75	30 day	6.75%
15 yr. 1st	6.25	30 day	6.25%	15 yr. 1st	6.25	30 day	6.25%
10 yr. 1st	5.75	30 day	5.75%	10 yr. 1st	5.75	30 day	5.75%
5 yr. 1st	5.50	30 day	5.50%	5 yr. 1st	5.50	30 day	5.50%
30 yr. 1st	6.75	30 day	6.75%	30 yr. 1st	6.75	30 day	6.75%
15 yr. 1st	6.25	30 day	6.25%	15 yr. 1st	6.25	30 day	6.25%
10 yr. 1st	5.75	30 day	5.75%	10 yr. 1st	5.75	30 day	5.75%
5 yr. 1st	5.50	30 day	5.50%	5 yr. 1st	5.50	30 day	5.50%
30 yr. 1st	6.75	30 day	6.75%	30 yr. 1st	6.75	30 day	6.75%
15 yr. 1st	6.25	30 day	6.25%	15 yr. 1st	6.25	30 day	6.25%
10 yr. 1st	5.75	30 day	5.75%	10 yr. 1st	5.75	30 day	5.75%
5 yr. 1st	5.50	30 day	5.50%	5 yr. 1st	5.50	30 day	5.50%
30 yr. 1st	6.75	30 day	6.75%	30 yr. 1st	6.75	30 day	6.75%
15 yr. 1st	6.25	30 day	6.25%	15 yr. 1st	6.25	30 day	6.25%
10 yr. 1st	5.75	30 day	5.75%	10 yr. 1st	5.75	30 day	5.75%
5 yr. 1st	5.50	30 day	5.50%	5 yr. 1st	5.50	30 day	5.50%
30 yr. 1st	6.75	30 day	6.75%	30 yr. 1st	6.75	30 day	6.75%
15 yr. 1st	6.25	30 day	6.25%	15 yr. 1st	6.25	30 day	6.25%
10 yr. 1st	5.75	30 day	5.75%	10 yr. 1st	5.75	30 day	5.75%
5 yr. 1st	5.50	30 day	5.50%	5 yr. 1st	5.50	30 day	5.50%
30 yr. 1st	6.75	30 day	6.75%	30 yr. 1st	6.75	30 day	6.75%
15 yr. 1st	6.25	30 day	6.25%	15 yr. 1st	6.25	30 day	6.25%
10 yr. 1st	5.75	30 day	5.75%	10 yr. 1st	5.75	30 day	5.75%
5 yr. 1st	5.50	30 day	5.50%	5 yr. 1st	5.50	30 day	5.50%
30 yr. 1st	6.75	30 day	6.75%	30 yr. 1st	6.75	30 day	6.75%
15 yr. 1st	6.25	30 day	6.25%	15 yr. 1st	6.25	30 day	6.25%
10 yr. 1st	5.75	30 day	5.75%	10 yr. 1st	5.75	30 day	5.75%
5 yr. 1st	5.50	30 day	5.50%	5 yr. 1st	5.50	30 day	5.50%
30 yr. 1st	6.75	30 day	6.75%	30 yr. 1st	6.75	30 day	6.75%
15 yr. 1st	6.25	30 day	6.25%	15 yr. 1st	6.25	30 day	6.25%
10 yr. 1st	5.75	30 day	5.75%	10 yr. 1st	5.75	30 day	5.75%
5 yr. 1st	5.50	30 day	5.50%	5 yr. 1st	5.50	30 day	5.50%
30 yr. 1st	6.75	30 day	6.75%	30 yr. 1st	6.75	30 day	6.75%
15 yr. 1st	6.25	30 day	6.25%	15 yr. 1st	6.25	30 day	6.25%
10 yr. 1st	5.75	30 day	5.75%	10 yr. 1st	5.75	30 day	5.75%
5 yr. 1st	5.50	30 day	5.50%	5 yr. 1st	5.50	30 day	5.50%
30 yr. 1st	6.75	30 day	6.75%	30 yr. 1st	6.75	30 day	6.75%
15 yr. 1st	6.25	30 day	6.25%	15 yr. 1st	6.25	30 day	6.25%
10 yr. 1st	5.75	30 day	5.75%	10 yr. 1st	5.75	30 day	5.75%
5 yr. 1st	5.50	30 day	5.50%	5 yr. 1st	5.50	30 day	5.50%
30 yr. 1st	6.75	30 day	6.75%	30 yr. 1st	6.75	30 day	6.75%
15 yr. 1st	6.25	30 day	6.25%	15 yr. 1st	6.25	30 day	6.25%
10 yr. 1st	5.75	30 day	5.75%	10 yr. 1st	5.75	30 day	5.75%
5 yr. 1st	5.50	30 day	5.50%	5 yr. 1st	5.50	30 day	5.50%
30 yr. 1st	6.75	30 day	6.75%	30 yr. 1st	6.75	30 day	6.75%
15 yr. 1st	6.25	30 day	6.25%	1			