



# MARKET

Exclusively from Real Estate One.

# from Real Estate One.

Michigan's Largest Real Estate Company



## BIRMINGHAM

BEAUTIFULLY MAINTAINED 3 bedroom, 1 1/2 bath ranch. Walking distance to town. Updated. Hardwood floors, marble fireplace in living room, oak kitchen cabinets, glassed & screened porch, finished basement. \$151,900 (B14806) 646-1600



## ROCHESTER HILLS

RARE FIND! Mint condition ranch. Pride of ownership reflected inside and out. Three bedrooms, 2 1/2 baths, family room, cedar deck, circular drive. For the most select buyer! \$149,900 (B15124) 644-4700



## FARMINGTON HILLS

THIS IS THE HOME FOR YOU...completely updated - gourmet kitchen with new appliances. Walk-out to patio with BBQ in private yard. Great sub! Great price! \$149,900 (KIL) 851-1900



## BERKLEY

SPACIOUS COLONIAL. Four bedroom, 2 1/2 baths, Andersen windows, formal dining room plus informal dining area, family room with fireplace, basement 2 car detached garage. \$144,900 (B590B) 648-9100



## WEST BLOOMFIELD

LAKE VIEW. Updated throughout-splendid ranch on double lot with beach and boat privileges on all sports Walnut Lake, Birmingham Schools. Newer furnace and kitchen with breakfast bar. \$144,800 (PUT) 851-1900



## SOUTHFIELD

GORGEOUS LOT. Beautiful brick ranch on .75 acres private lot adds to this homes appeal. First floor laundry, family room with fireplace, finished basement and more. \$135,000 (225CAR) 559-2300



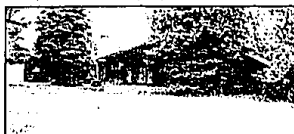
## SOUTHFIELD

SPACIOUS CONDO. This condo has everything! Two bedroom, 2 1/2 baths, 1st floor laundry, finished rec room, neutral decor and private entry, located in a small private community. \$132,900 (WAL) 851-1900



## SOUTHFIELD

ONE ACRE. Beautiful home on a picturesque lot. New kitchen, carpet, newer roof, furnace, central air, California closets. Move-in condition. Just what you've been looking for. \$129,900 (MAP) 477-1111



## SOUTHFIELD

LOVELY 4 BEDROOM RANCH. One acre lot, huge fireplace six foot wide, sunken kitchen with tons of Merlot cabinetry, 3 full baths, room to roam. \$128,900 (238MCA) 559-2300



## FARMINGTON HILLS

FRESH AND NEUTRAL! Two bedroom, 2 1/2 bath 1990 Condo with great room, spacious master suite, private setting and 2 car attached garage. Conventional location. Owner transferring. \$124,900 (MIS) 851-1900



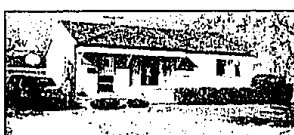
## BLOOMFIELD

CAN'T BE BEAT! 2,100 sq. ft., 3 bedroom, 2 1/2 bath Bloomfield townhouse with all the amenities and all the appliances! Updated kitchen, home warranty, \$1500 carpet credit and close to Auburn Tech. \$114,500 (B15741) 644-4700



## STERLING HEIGHTS

IT'S UNBEATABLE! Great condition and value. Three bedroom, 1 1/2 bath tri-level. Great curb appeal in warm friendly neighborhood. This one won't last long! \$114,900 (3BARL) 952-5590



## FARMINGTON

FOUR BEDROOM BEL-AIRE BRICK RANCH. 1,517 sq. ft. family room with fireplace, 2 bathrooms, 2 car garage, central air. Many updates, freshly painted interior. Hurry! \$114,900 (LEE) 477-1111



## SOUTHFIELD

THREE BEDROOM COLONIAL. Has great potential, central air, finished basement, large family room with bar mirrored bi-folds in master bedroom. Decorate to your taste. \$108,000 (181JEA) 559-2300



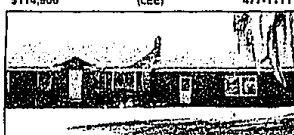
## WEST BLOOMFIELD

GREENPONT CONDO. Right out of House and Garden. Lush, private entry courtyard with patio. Open, contemporary, neutral 2 bedroom, 2 1/2 bath townhouse. Skylites, fireplace, garage, pool, tennis. Delightful! \$107,600 (DAN) 851-5700



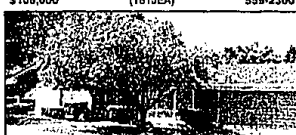
## FARMINGTON HILLS

GREAT CURB APPEAL. Three bedroom ranch with attached 2 1/2 car garage. Central air. Family room. Updated kitchen. Appliances include washer and dryer. Bedroom windows new in '92. \$99,700 (DOR) 851-1900



## FARMINGTON HILLS

GREAT LOCATION. One acre property. Two bedroom, 1 1/2 bath. Living room with fireplace. Huge family room and a big dining room. \$95,000 (TEN) 851-1900



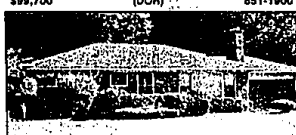
## SOUTHFIELD

LOVELY CUSTOM RANCH. Three bedroom, 2 bath features central air, dining room, 2-car attached garage, patio, built-in stove, circular drive, and more! \$93,500 (2145OU) 559-2300



## FARMINGTON HILLS

FOUR BEDROOM COLONIAL. Charming family home totally updated, neutral decor, large private fenced lot. Above ground pool with decking. \$89,900 (IND) 477-1111



## SOUTHFIELD

QUICK POSSESSION. Three bedroom brick ranch with attached 2-car garage, finished basement, spacious living room with natural fireplace, family room is paneled, master bath. \$88,900 (187HIL) 559-2300



## WEST BLOOMFIELD

ENTRY LEVEL. Excellent condition. Two bedroom, 2 baths, balcony overlooking stream. One car garage. Laundry in unit. All appliances. Great location. \$79,500 (LCN) 851-1900



## SOUTHFIELD

FANTASTIC VALUE! 1500 sq. ft. ranch condo with storage galore! Master suite, huge walk-in closets, open floor plan. Laundry in unit tied basement and attached garage. Plus - immaculate move right in! \$79,000 (WIL) 851-1900



## SOUTHFIELD

BIRMINGHAM SCHOOLS. Looking for a brick ranch with 2 car attached garage? Don't miss this one. Remodeled kitchen, fireplace, fenced yard and more. \$78,900 (B16317) 648-1600



## BIRMINGHAM

WILLIAMSBURG CONDO. Attractively decorated 2 bedroom, 1 bath townhouse. Courtyard setting, includes window treatments and blinds. Updated bath, ceramic tile in kitchen and dining. \$78,600 (B15522) 648-1600



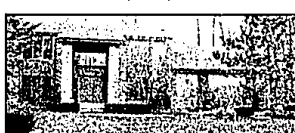
## BLOOMFIELD

SUNSET LAKE VIEWS! Square Lake privileges included with this sunny, contemporary, 2 bedroom, 2 bath upper unit complete with in-unit laundry and one car garage. Great north Bloomfield location. \$77,900 (B16001) 644-4700



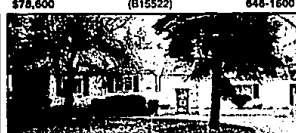
## FARMINGTON HILLS

FOUR BEDROOM BUNGALOW ON LARGE LOT. Great family home has many upgrades, fenced yard, security system, hardwood floors, low taxes. Seller moved out of area. Includes 1 year home warranty. \$76,900 (OXF) 477-1111



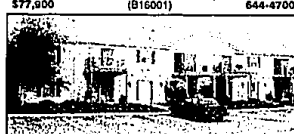
## WEST BLOOMFIELD

LOCATION! LOCATION! Private cul-de-sac setting in beautiful Maple Woods North. Exciting 2 story foyer, great room, fireplace and wet bar. Glamorous gourmet kitchen. Solarium and library. \$39,000 (107ALB) 559-2300



## SOUTHFIELD

SPACIOUS RANCH. A unique 3 bedroom ranch with 1600 sq. ft. including in-law quarters. Many updated features. Oversized 2 car garage, shed. Just reduced. \$47,800 (WES) 477-1111



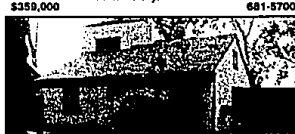
## AUBURN HILLS

ATTRACTIVE FIRST FLOOR CONDO. Neutral decor, move-in condition. Overlooks pond. Appliances include: stove, refrigerator, dishwasher, washer & dryer. Close to Oakland University & Oakland Tech. Park. Land contract available. \$52,900 (B14817) 648-1600



## FARMINGTON

HARD TO FIND 2 BEDROOM CONDO. Gorgeous, recently painted, new carpet, central air. Immediate occupancy. Priced to sell. \$51,900 (GRA) 477-1111



## OAK PARK

BEST BUY IN THE AREA. Gorgeous 3 bedroom bungalow, carpet throughout, fenced backyard, newer vinyl siding in '89, new roof and furnace in 1990. Immaculate condition. \$38,500 (107ALB) 559-2300



Our 64th Year

"Real Estate One Continued on Front of this Section"

©Real Estate One Inc. 1993

Administration 851-2800  
Farmington 477-1111  
Farmington Hills 851-1900  
Livonia/Redford 261-0700  
Milford 646-1065  
Northville/Novi 348-6430  
Lakes Area 363-8307  
Plymouth/Canton 455-7000  
Rochester 652-6500  
Royal Oak 548-9100

Southfield/Lathrup 559-2300  
St. Clair Shores 296-0010  
Sterling Hgts. 979-5660  
Taylor 292-8550  
Traverse City (616) 947-9800  
Traverse City Commercial (616) 946-4040  
Trenton 675-6600  
Troy 952-5590

Waterford/Clarkston 623-7500  
West Bloomfield 681-5700  
Westland/Garden City 326-2000  
Relocation Information 851-2600  
Other Michigan Locations 1-800-521-1919  
Training Center 356-7111

Relocating? For housing information on your destination city, call our relocation services center 1-800-521-0508

For information on a career in real estate call (313) 356-7111

