

FOR PEOPLE WHO REALLY MATTER (Our Customers)**FINDING THE RIGHT HOME IN THE RIGHT PLACE
MEANS DOING IT THE RIGHT WAY.****IT REALLY MATTERS TO US.****WEIR, MANUEL, SNYDER & RANKE, INC.**

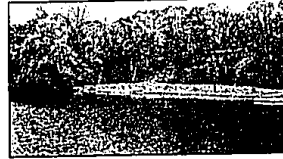
LIGHT AND BRIGHT COLONIAL with mature landscaping and a looped drive. This beautifully designed home is open and spacious. Extensive use of glass and hardwood floor. Bloomfield Hills Schools. \$459,000. (644-6300) B13197



LOCATION! LOCATION! LOCATION! Setting on nearly an acre. Popular Foxcroft Sub in Bloomfield Hills! Brick ranch with creative potential, 3 bedrooms, library, pegged hardwood floors, 2 fireplaces. \$269,000. (689-7300)



ALMOST NEW "DOLLHOUSE." Beautiful oak kitchen cabinetry, all wood windows, lovely fireplace in living room, 2 car attached garage, landscaped large wooded lot. Move in and kick your feet up. Lake privileges. \$79,900. (651-5500)



SODON LAKE FRONTAGE. 4 bedroom, 3 1/2 bath ranch with finished walk-out lower level. Family room, gourmet kitchen with 6-burner range, 2 ovens including a pizza oven, granite counters. Fabulous in many ways. (644-6300)



SUPER CONTEMPORARY COLONIAL with 1st floor master suite plus 3 bedrooms up. 3 full baths. Fireplace in great room. Library, 1st floor laundry, professionally landscaped, sprinklers. Many upgrades. \$219,900. (689-7300) S11573



UPDATED BIRMINGHAM COLONIAL radiates the charm of the 1920's. Bright interior, living room with fireplace, three bedrooms, paneled rec room with shower in basement. Screened porch. \$145,000. (644-6300) B13457



FOR THOSE WHO SAVOR EXCELLENCE! Four bedroom home of high quality and style in prime Bloomfield area. Very highly rated school district. Family room with fireplace, private library, walk-out lower level. (644-6300) B16708



12.05 ACRES with 380' on beautiful, private, all sports lake. Enjoy great bass fishing, swimming and boating. Impressive home with great views from every room. 20x40 pole barn, horses allowed. 5 bedrooms. \$464,500. (851-5500)



A 1920'S HOUSE situated on a deep, picturesque corner lot within sight of Quanton Lake. Living room with fireplace, three bedrooms, 1 1/2 baths, dining room, basement, an easy walk to downtown Birmingham. \$219,000. (644-6300)



SHARP THREE BEDROOM RANCH on 1 1/2 lots within walking distance of downtown Birmingham. Neutral decor, family room, full basement, oversized deck, close to schools and parks, tool shed. \$139,900. (644-6300)



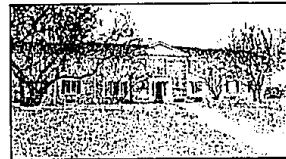
MOVE RIGHT IN. Freshly decorated ranch on beautiful Bloomfield site with meandering stream viewed from living room and kitchen. 3 bedrooms, 1 full and 2 half baths. Carpeted walk-out basement. \$137,900. (644-6300) B11639



BIRMINGHAM ELEGANCE. Brand new residence in Quanton Lake/Holy Name area. Magnificent foyer, 4 bedrooms, great for formal entertaining, yet comfortable for family living. 727 Harmon, N. of Maple, W. of Woodward. (644-6300)



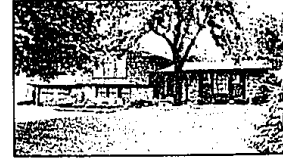
TRADITIONAL BEAUTY in a private, treed setting. High quality is evident in this four bedroom tudor with an extraordinary lower level with rec room, full kitchen, exercise room, billiard area and more. (644-6300) B14679



OWNER WANTS SOLD YESTERDAY! Savvy buyers will recognize the value. Marble foyer, spacious rooms, third bedroom currently used as a den with a bar, two baths, basement, one car garage, central air. \$88,500. (651-5500)



CITY OF BLOOMFIELD HILLS. Elegant ranch condo in quiet secluded area. Luxurious quality with large breakfast area overlooking wooded yard. 9' living room ceiling, fireplace, elevator to heated garage. \$285,000. (644-6300) B10524



SPLENDID BLOOMFIELD TOWNSHIP LOCATION and much pride of ownership. Spacious rooms, family room with double doorwall to lovely patio, four bedrooms, 2 1/2 baths, games room and workshop. \$219,000. (644-6300) B13682



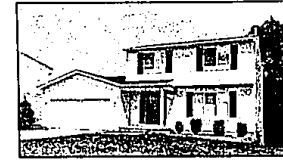
IMPRESSIVE EXECUTIVE COLONIAL with professional landscaping. Numerous amenities - loaded glass entry, hardwood foyer, judges paneling, 4 bedrooms, library/study, 1st floor laundry. Rochester. \$339,900. (651-3500) 109056



LOCATION, LOCATION, LOCATION - Wooded privacy, lovely gardens and history surrounds this former gardener's cottage in City of Bloomfield Hills. A child's dream with a cow barn and old milkhouse. \$419,000. (644-6300)



BEAUTIFULLY APPOINTED Bloomfield Hills Robertson townhouse. Lovely courtyard entrance, 3 bedrooms, 2 1/2 baths, 3 fireplaces, walk-out lower level, spectacular views from 3 levels. Gated community. \$355,000. (644-6300)



LARGE LOT with good location in subdivision. Neutral decor in 3 bedroom colonial. Plumbing roughed in for bath in walk-out basement. Deck. 2 car attached garage with door opener. Rochester Hills. \$129,900. (651-3500) 108804



BLOOMFIELD VILLAGE four bedroom, 2 1/2 bath colonial has family room with fireplace, gorgeous light oak kitchen with 16x17 garden room, wrought iron enclosed inground pool and much, much more. \$495,000. (644-6300)



PRIME BLOOMFIELD HILLS CONDO. Two bedrooms, Florida room, newer kitchen and bathroom features. New carpet, appliances, window treatments, central air, garage. Shows like a model. \$136,900. (644-6300) B12476



BLOOMFIELD HILLS END UNIT CONDOMINIUM living room balcony, dining room, large walk-in closet with dressing alcove in master bedroom. Private basement room with cedar closet. Carport. \$62,500. (644-6300) B15698



MAGNIFICENT SITE and residence on Island Lake. Landmark architecture by Alden Dow. Possibly the finest location in Michigan. A truly extraordinary residence. Seven bedrooms, library, upper level family room. (644-6300)



REALTOR

**Weir, Manuel, Snyder & Ranke, Inc.**

HOURS weekdays from 8:30 in the morning until 8:00 in the evening.
Saturday until 5:00 P.M.
Sunday afternoons to 5:00 P.M.

298 South Woodward
7285 Orchard Lake Road
4700 Rochester Road
1205 West University Drive
498 South Main Street

Birmingham Bloomfield Hills
West Bloomfield/Farmington Hills
Troy Birmingham/Bloomfield
Rochester/Rochester Hills
Plymouth Northville/Canton/Novi

• 644-6300
• 851-5500
• 689-7300
• 651-3500
• 455-6000