

FOR YOUR NEXT FINER HOME...Call Us Today



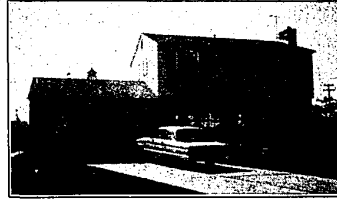
WEST BLOOMFIELD

Tri-level in move-in condition. 3 bedrooms, 2½ baths, carpeted living room and separate dining room with doorwall, lovely kitchen with built-ins and large table space, family room with beamed ceiling and fireplace. Large lot, 2 car garage. \$42,900. 476-8700.



PLYMOUTH

Largest lot in Lakepointe Subdivision, 4 bedroom brick ranch, 2½ baths plus ½ bath in tiled basement, fireplace in family room, kitchen with extras, large carpeted living room, 2 car attached garage with electric door opener. \$42,900.



NORTHVILLE

4 bedroom 2 story Colonial. 2½ baths, large newly carpeted living room with fireplace, kitchen with built-ins and separate dining area, beamed ceiling and ranch plank floor in family room, basement tiled and partitioned, large terrace, nicely decorated and landscaped. Walking distance to all schools and shopping. Reasonably priced at \$37,700.



LIVONIA

OPEN SUNDAY 2-5 32932 Southgate

Burton Hollow Woods, 3 bedroom brick ranch. 2½ baths, fireplace in family room, professionally finished recreation room with built-in stereo, first floor laundry room, built-in B-B-Q, 2 car attached garage, beautifully landscaped. \$41,900.



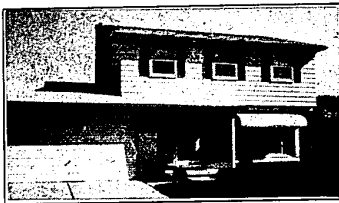
FARMINGTON

2 story home in a beautiful setting on ¾ acre lot. Custom quality throughout. 4 bedrooms, separate dining room, kitchen with built-ins and large table space, 2½ baths, full basement, first floor utility room, 28' family room with fireplace. \$49,900. 476-8700.



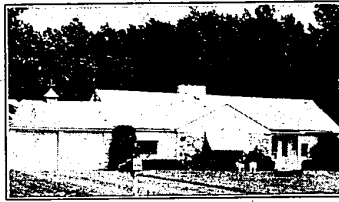
WESTLAND

Sharp 3 bedroom tri-level, with family room, fully insulated, new carpeting, modern kitchen, close to shopping and school. 2 car garage. FHA terms. \$25,900.



PLYMOUTH

Lakepointe Subdivision, 4 bedroom Colonial. Large living room, separate dining room, kitchen with built-ins, fireplace in family room, enclosed terrace, carpeted throughout, power humidifier, nicely landscaped, 2 car garage. \$41,900.



SOUTHFIELD

OPEN SUNDAY 2-5

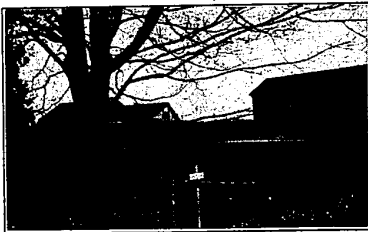
29180 Shardinale

Twelve Mile and Inkster, 3 bedroom ranch. Carpeted throughout, with fireplace in large living room, formal dining room, 1½ baths, Thermopane windows, water softener, over an acre wooded lot on a dead end street, 2 car attached garage. \$43,900.



FASHIONABLE LATHRUP VILLAGE

Four bedroom custom built quad-level. 2½ baths, elegant living and dining room, huge family room plus finished recreation room in basement, wet plaster including 2½ car garage, modern kitchen with separate eating area, beautiful large lot offers tremendous privacy. There are many extras, like a screened-in covered porch, first floor laundry and 2 fireplaces. Priced below duplication at \$48,700. 476-8700.



NORTHVILLE—99 ACRE ESTATE

4 bedroom, center entrance brick Colonial. 2 fireplaces, sun room, screened porch, new 2-car garage with electric door openers, circular drive, underground service wires. 13½ acre peach orchard leased. Balance of land tillable or pasture. Conducive to riding stable. Good investment. 20% down — land contract.

Main Office

32823 W. TWELVE MILE ROAD
476-8700

FARMINGTON



Thompson-Brown Company

PROGRESS SINCE 1924

Branch Office

41120 E. FIVE MILE RD.
PLYMOUTH, MICH.

PLYMOUTH 455-2700

LIVONIA or DETROIT 261-5080