



# HANNETT • WILSON & WHITEHOUSE

REALTORS

2511 West Maple Road at Cranbrook  
Bloomfield Hills, Michigan 48301

646-6200



## BLOOMFIELD ESTATE

Top of the line kitchen with commercial appliances, granite counters, sitting room and breakfast room. Formal dining, living and music rooms. Elegance! \$1,500,000 B-417788



## LOWER LONG LAKE

Clifford Wright contemporary on over an acre. Open floor plan with atrium and views from all rooms. Large finished lower level. \$939,000 B-411446



## LAKE FRONTAGE

Newly decorated! Master suite with new bath and large walk-in, great room with cathedral ceiling and access to new cedar decks with hot tub. Great sunset views. \$599,000 B-402385



## GREAT FAMILY HOME

Newer shingles, 1992 central air, newer carpeting, circular drive... just a few of the special features of this fine family home. Bloomfield Hills schools. \$213,500 B-415235



## GREAT LOCATION

Spacious home with Bloomfield mailing and Birmingham schools. Four bedrooms, 2 1/2 baths. Lovely pool area. \$249,900 B-413028



## PRICED TO SELL

Located directly across from exclusive Kensington Academy. Large bedroom sizes, many new windows, some hardwood floors, Berber carpeting. Bloomfield Hills schools. \$189,700 B-406690



## BEAUTIFUL TOWNHOUSE

Lovely unit with bright southern exposure and quiet setting near end of complex. Completely updated! Finished basement, too. \$112,000 B-418565



## CITY OF BLOOMFIELD HILLS

Classic Manor Home with such grace and style. Stately elevated setting of over 2 acres. Interior must be seen to appreciate the quality throughout. \$1,700,000 B-407145



## COUNTRY CLUB FEELING

Move right into this custom home with dream kitchen, French doors to decking and lovely pool area. First floor master suite, sauna, work-out area. \$1,390,000 B-410757



## DOWNTOWN BIRMINGHAM

Decorator perfect townhouse. Two-story atrium windows reflect a warm, open feeling. No association fees! For those who desire the "special" feel of downtown living! \$229,700 B-413355



## POPULAR NOTTINGHAM

Immaculate family home so beautifully decorated and in a great Beverly area of fine homes. Hardwood floors under some carpeting, family room plus Florida room. \$289,900 B-417484



## OPEN SUNDAY 1-4

Spacious Troy home in a warm family neighborhood. Walk to schools and park. New windows, 1950 PELICAN CT. (S. of Wamies & E. of Coolidge). \$239,800 B-415419



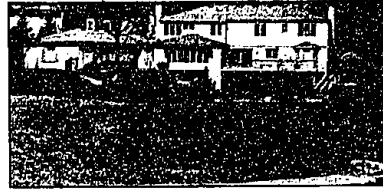
## BEAUTIFUL VIEWS

Rare Franklin ranch with basement! Newer kitchen with greenhouse window, great room with cathedral ceiling, central air, new deck. Two furnaces. \$199,900 B-417677



## LAKEFRONT CONDO

Docking when available with this sharp Port Cove condo. Enjoy summer views from large covered balcony. Lots of extras and custom features. \$127,000 B-406385



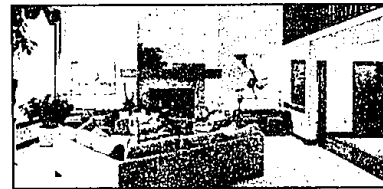
## VERNOR ESTATES

Beautiful Vernor lakefront features 5-6 bedrooms, country kitchen, great room, decks and patios. Lovely inground pool with waterfall and gazebo. \$715,000 B-416432



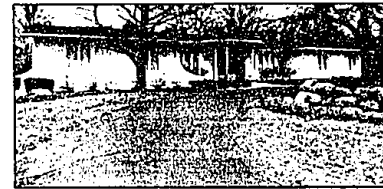
## OPEN SUNDAY 2-5

Gracious estate in the City of Bloomfield Hills. Beautiful 3 acres with lovely period home, 1690 RATHMOR (N. of Long Lake & W. of Woodward). \$2,250,000 B-00440



## LAKEFRONT CONTEMPORARY

All sports lakefront living! Great open design for the family living or entertaining. Quality detailing throughout. Interior must be seen to appreciate. \$495,000 B-402152



## PRIVATE LOT

Recently redecorated with open floor plan for a light, airy feeling. Formal dining room, library plus family room. Bloomfield Hills schools. \$410,000 B-415844



## ATTENTION TO DETAIL

Custom-built and nearly new! Dramatic great room, elegant master, a "cook's delight" kitchen. Much more. \$285,500 B-414993



## COMPLETELY UPDATED

Outstanding contemporary. Versatile use of area, family room plus library, high ceilings, sparkling white kitchen. \$174,900 B-401680



## CHANTICLEER CONDO

Previous model with so many custom features. Open and bright with beautiful decorating. Clubhouse and pool for enjoyment. \$189,000 B-418527

**HOMES OF QUALITY ARE OUR SPECIALTY!**