



Hall & Hunter



WITHIN WALKING DISTANCE

This custom built home is within walking distance of Poppleton Park and down town Birmingham. Circular drive on almost two acres of land. Vaulted ceilings and many built-ins in the bedrooms. Finished and exposed walk-out lower level.

Call 647-8100



OPEN SUNDAY 1-5

Over one acre of rolling land and set back in on a private cul-de-sac. The main level has 3 bedrooms and a first floor laundry. The lower level is completely finished with bedroom, bath and kitchen. 822 Helston Ct. N of Long Lake Rd., E of Squirrel.

Call 647-8100



FLEXIBLE FLOOR PLAN IN BLOOMFIELD HILLS

This spacious home pampered by its owner offers an expansive and flexible floor plan. 4 bedrooms and 3 1/2 baths, family room and study. A large deck for summer enjoyment. Circular drive, sprinkling system, newer roof, furnace and central air.

Call 644-3500



NEAR QUARTON LAKE

This center entrance Colonial is within an easy walk of Quanton Lake. There are 4 bedrooms and 2 1/2 baths, a family room with fireplace and kitchen with eating area. Beautifully exposed hardwood floors, formal dining room and first floor laundry.

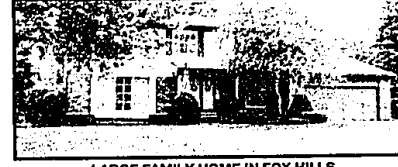
Call 644-3500



OPEN SUNDAY 2-5

Pride of ownership is evident in this lovely Bloomfield Hills colonial. Newer kitchen, formal dining room, family room with fireplace and additional 22x18 garden room, 2820 Dowderry Ct. North of Long Lake Rd., and West off Eastways.

Call 644-3500



LARGE FAMILY HOME IN FOX HILLS

Spacious 5 bedroom colonial with formal dining room, family room with fireplace and large heated sun room. Recently painted, newer roof and newer hot water heater. First floor utility room, finished rec room and central air.

647-8100



IDEAL FAMILY HOME IN HICKORY GROVE

Within walking distance of St. Hugo Church and School. 4 bedrooms, 2 1/2 baths, formal dining room and family room with fireplace. Partially finished rec room and first floor utility room. Private rear yard with in-ground pool for summer fun.

Call 647-8100



ADAMS WOODS

Immaculate end unit offering 3 bedrooms and 2 1/2 baths. Living room with fireplace and spectacular updated kitchen. Finished rec room for additional entertaining. Large deck overlooking ravine for quiet peaceful evening enjoyment.

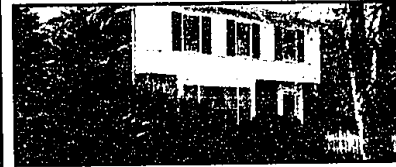
Call 647-8100



OPEN SUNDAY 1-4

Elegant Tudor set on an elevated lot offering an exposed walk-out lower level. Beautiful island kitchen with eating space, family room with fireplace, library and partially finished lower level. 5089 Longview, North off Long Lake Rd. and East of Adams.

Call 644-3500



OPEN SUNDAY 2-4

Location, location, location. Well cared for colonial offering 3 generous bedrooms, formal dining room, cozy family room and finished basement. Excellent value, stop in and see for yourself at 1467 Norfolk. North of 14 Mile Rd. and West off Southfield.

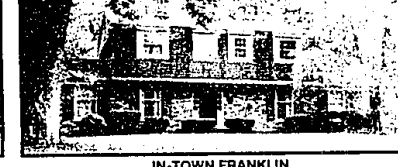
Call 644-3500



HANDSOME VILLAGE COLONIAL

A fieldstone front offers curb appeal of this handsome 3 bedroom colonial in Bloomfield Village. A finished rec-room offers extra room during the winter months and a lovely screened porch offers extra room during the summer months. Call for additional details.

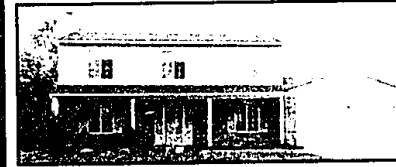
Call 644-3500



IN-TOWN FRANKLIN

Within an easy walk of Franklin Village. 4 bedrooms, 2 1/2 baths, formal dining room, family room and library. First floor laundry area and two car attached garage. Newer roof and furnace. Birmingham Schools.

Call 647-8100



NEARBY CASS LAKE

Located near many parks and areas with access to Cass Lake is where this newer colonial can be found. Great Room with fireplace, formal dining room and large country kitchen with dinette space. 3 bedrooms, 2 1/2 baths and central air.

Call 647-8100



STUNNING TOWNHOUSE IN TROY

Luxurious updates and improvements such as marble foyer, light pickled kitchen cabinets, skylights and fabulous master bath with Jacuzzi tub and separate stall shower. Formal dining room that opens to deck overlooking pond. Finished basement.

Call 647-8100



AFFORDABLE BRICK BUNGALOW

This charming brick bungalow offers 3 bedrooms, living room and kitchen with eating area. Privacy fence offers a nice quiet and private rear yard. New furnace, newer roof and two car garage. Located near Pierce Elementary School and other parks.

Call 644-3500



TWO FOR THE PRICE OF ONE

Conveniently located in Birmingham family neighborhood. Each unit is alike with exposed hardwood floors, newer kitchens, two bedrooms, basements and central air conditioning. Fenced yard and all this within easy walk to Adams Square shopping.

Call 644-3500



BRICK RANCH

This well maintained brick ranch sits on an elevated lot with a circular drive to the front entry. 3 bedrooms, hardwood floors, wet plaster and some new carpeting. Near 1/2 acre lot in Bloomfield Hills School District.

Call 644-3500



MAINTENANCE FREE

A charming brick walk leads to this lovely vinyl sided home that has been updated where it counts. Newer almond and oak kitchen with appliances. Newer roof, central air and electronic air cleaner. Fenced yard, patio and garage.

Call 647-8100



BRIGHT & OPEN

Positioned to catch the morning sun. Light oak kitchen with skylight and cathedral ceiling. Living room with fireplace and an extensively finished basement giving plenty of living space. Private and unit and well located in the complex.

Call 647-8100



REMODELED INSIDE

Remodeled living room with vaulted ceiling offers that spacious and open feeling. Kitchen, bath and newer windows all within the last few years. Enclosed front porch for morning coffee or evening relaxation. Basement and garage. Call for details.

Call 647-8100



BLOOMFIELD HILLS DEVON SQUARE

Ground floor 2 bedroom unit with 2 full baths. Spacious living room and dining area that overlooks private courtyard. Freshly painted and carpeted. Laundry and additional storage available in the basement. Walk to shopping. Great location.

Call 644-3500

1732 W. Maple Rd.
Birmingham
644-3500

800 W. Long Lake Rd.
Bloomfield Hills
647-8100