



HANNETT·WILSON & WHITEHOUSE

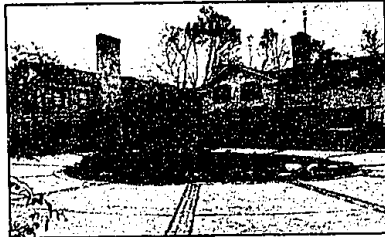
2511 West Maple Road at Crambrook
Bloomfield Hills, Michigan 48301

646-6200



HILLS OF LONE PINE

Brand new ranch designed by Robert Saarinen Swason. Tremendous views from large great room and dining room overlooking water and nature area. All the right amenities! \$895,000 B-414948



GILBERT LAKE FRONTAGE

Unique estate on wooded 4 acres permitting 2 horses! Elegance throughout with 8 fireplaces, updated baths and kitchen, maid's quarters, four car garage and much more! \$899,900 B-423654



HILLS OF LONE PINE

Beautifully landscaped estate site overlooking water and nature area. Dramatic two-story marble foyer. Spacious 3 level living! Enjoy common pool, tennis, gatehouse security. \$749,000 B-430636



WALNUT LAKE PRIVILEGES

Totally updated with hardwood floors, white kitchen, 2 bedrooms, 2 baths. Perfect for the single person. \$139,900 B-432390



LARGE FAMILY HOME

Premium wooded setting of over an acre with tennis court! Updated kitchen, first floor master, lower level great room. \$555,700 B-424359



BIRMINGHAM IN TOWN

Experience a bird's eye view from this updated and expanded carriage house. Creative use of living space. \$349,000 B-400063



ENTERTAINING DELIGHT

Striking contemporary with an elegant, open feeling! extensive use of marble. T.J. Thomas Kitchen with Jenn-Air and Sub Zero. Second kitchen in lower level. Much more. \$599,000 B-420857

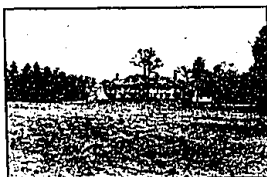


ROCHESTER'S STONY POINTE

In an area of prestigious homes! Nearly 6,000 sq. ft. of custom features throughout. Marble foyer with circular staircase, large designer kitchen and so very much more. \$429,900 B-425481

BEAUTIFUL BLOOMFIELD ESTATE

Albert Kahn French Country features top-of-the-line custom kitchen with commercial appliances, granite counters, sitting room and separate morning room. Formal dining room with French doors to foyer, living room and music room. Convenient front and back stairways. Beautiful, elegant living space. This property must be seen to appreciate! \$1,500,000 B-417788



4250 STRATHDALE

(N. of Lone Pine & W. of Middlebelt)

FABULOUS CONTEMPORARY

Beautiful area for this striking home. Open in design. Outstanding great room with marble fireplace and wet bar, large kitchen and Sub Zero. \$349,900 B-410276



BLOOMFIELD CONDO

Great complex location with bright southern exposure. Updated with soft neutral decor. Replaced living room. \$112,000 B-418585



CITY OF BLOOMFIELD HILLS

Wooded ravine setting of over 2 acres. Custom designed with lots of versatile living space. Three car garage, too! \$399,700 B-421730



NEW CONSTRUCTION

Acre estate with premium location in the City of Bloomfield Hills. Magnificent contemporary ready for the personal finishing touches. Phone for your private showing. \$1,599,000 B-420843



LOCATION, LOCATION, LOCATION

City of Bloomfield Hills prestigious Rudgate area of fine homes! Extra large room sizes include 5 bedrooms, 3 1/2 baths, Florida room, greenhouse and more. New listing. \$789,000 B-436850



PROVENCAL PLACE

New construction, perfectly designed for today's lifestyle. Outstanding custom millwork, extensive use of beautiful marble. Private setting in an exclusive area! \$1,150,000 B-434495



ROCHESTER'S STONY POINTE

Elegantly appointed with all the right amenities! Great room with 20 ft. ceiling, master suite features sitting area with fireplace and luxurious bath. Beautiful! \$339,000 B-428367

HOMES OF QUALITY ARE OUR SPECIALTY!