

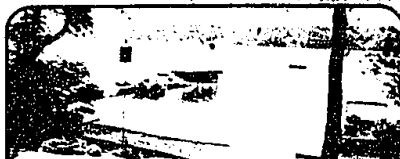


RALPH MANUEL

ASSOCIATES • REALTORS



NEW CONSTRUCTION - With time to personalize your selections. Home is bricked & drywalled to perceive finished home. Spectacular ceilings and floor plan for today's family life style. \$420,000. 851-6900 GAY-44084



UPPER STRAITS LAKE FRONT - Almost an acre lot, sandy beach with boat dock. 5000 sq. ft. finished walk-out lower level has family room, rec room with wet bar, wine cellar, 2 furnaces, air, deck and screened porch. \$895,000. 851-6900 ELE-43166



WHITE CONTEMPORARY - Glass block stairway to master suite with 10,000 sq. ft. Special ceilings, custom built-ins, 2 saunas, bars & entertaining areas. Located on walk-out wooded site, built by Crystal Homes in Royal Pointe Subdivision. \$1,200,000. 851-6900 TRD-



CONTEMPORARY WABEEK HOME - With many custom designed features. Gourmet kitchen with walk-in pantry, 2 wet bars and wrap around multi-level decks overlooking pool area. Bloomfield Hills Schools. \$369,900. 851-6900 TAK-441016



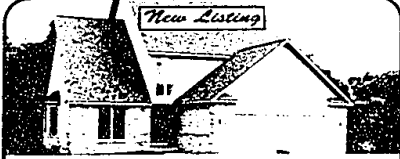
NEW IN BLOOMFIELD

OPEN SUNDAY 2-5

Elegant, traditional new construction. High ceilings, walk-out lower level, 3 decks, 2 master bedrooms, 3 fireplaces, 4 car garage. Fully landscaped, private, wooded ravine acre lot. \$999,999. 851-6900 HIK-435205
7285 Hiddenbrook
S. of Maple, E. of Inkster



CONTEMPORARY LOVERS DREAM HOME - Architect designed, 2-story home with white Berber carpeting & newly painted. Soaring 10-15' ceilings, skylights and gourmet kitchen with barrel ceiling in dinette. Magnificent master bath! \$389,900. 851-6900 HAN-441211



THIS HOME IS READY FOR YOU - To move right in! Quality new construction contemporary. Open floor plan, 3 bedrooms, 4 full baths, oak flooring in kitchen and gorgeous new carpeting. Beautiful rolling lot. \$264,900. 647-7100 BUM-



FIRST FLOOR MASTER - Lovely 1990, West Bloomfield colonial on premium, wooded lot. Spacious home, white island kitchen with 2 pantries, vaulted ceilings & skylights. Must See! \$299,900. 851-6900 MIN-441301



BIRMINGHAM SCHOOLS - Custom built, 5 year young 3 bedroom ranch with fabulous finished rec room, soft creamy tones and gracious master bedroom. Private fenced yard offers peaceful setting with deck & hot tub. \$199,000. 851-6900 IHR-418807

"New Listings"

YOU'LL LOVE THE HARDWOOD FLOORS and neutral decor in this classic, 3 bedroom, brick bungalow within walking distance to Downtown Royal Oak. \$129,900. 647-7100

UNIQUE, MULTI-LEVEL with beautiful grounds leading to pond. 4 bedrooms, 2 1/2 baths, gracious rooms and deck. Tranquil setting. Walnut Lake privileges. \$345,000. 851-6900

PEACHES AND CREAM - 2 bedroom, 2 bath, 1st floor ranch condo. Open, airy, and neutral. Pool and party house included. Southfield. \$90,000. 851-6900

BIRMINGHAM FARMS - An excellent location for a lovely 4 bedroom, 2 1/2 bath colonial. Professionally landscaped with large patio. Bloomfield Hills Schools. \$202,500. 647-7100

APPEALING BRICK RANCH in popular Birmingham neighborhood, with space for expansion on a wide lot. Hardwood floors in living room, dining room and bedrooms. \$179,900. 647-7100

SOUTHFIELD RANCH/BIRMINGHAM SCHOOLS - Newer vinyl siding, carpeting, furnace, and roof. Neutral decor, basement, and updated kitchen. \$62,900. 647-7100

CASS LAKEFRONT CONDO - Directly on all-sports Cass Lake. Spectacular views, docking available, 2 bedrooms, 2 baths, elevator, garage, and pool. \$127,000. 647-7100

APPEALING SOUTHFIELD 1 1/2 story home, with Birmingham Schools. 3 bedrooms, newer vinyl windows, furnace, central air, and roof. Pleasant yard. \$74,900. 647-7100

Meticulously maintained colonial in Franklin Valley. Updated in neutral colors, 3 bedrooms, large family room with fireplace, finished basement, 2 car garage. \$154,900. 851-6900



DYNAMITE BLOOMFIELD RANCH - On secluded treed lot with stream, newer kitchen with eating space, fireplaces in both living room and family room, 2 car garage. \$204,900. 647-7100 HIY-441559



FABULOUS LAKE FRONT CONDO - On most desirable all-sports lake. This exciting contemporary unit has 30' living room, stunning master bedroom & bath, plus a spectacular view of the water! Private boat dock. \$185,000. 851-6900 ISD-441325



"BRING ALL OFFERS-OWNER ANXIOUS". Walk to downtown Birmingham from this desirable ranch style home. Dramatic master bedroom, jacuzzi tub & finished basement, are but a few of the features offered. \$189,000. 647-7100 PAK-408344



WEST BLOOMFIELD - Beautifully appointed condo with vaulted ceilings, 2 1/2 baths, balcony overlooking great room, finished basement and much more. Appliances included. \$148,500. 851-6900 COO-441233



SHARP STARTER HOUSE! - Beamed cathedral ceilings contribute to the open feeling of this attractive ranch. Extensive updating in kitchen, bathroom, new furnace, central air. Move In! \$130,000. 647-7100 BUM-432893



PREMIUM LOCATION - Wow! is this townhouse great. Marble faced fireplace, oak cabinets in kitchen, 2 skylights and master suite is a dream. Pool, lighted tennis, finished lower level. Hurry on this! \$120,000. 851-6900 BAN-441442



CHARMING & RENOVATED - Lovely Ranch in Sylvan Lake, with lake privileges. 2 bedrooms, 1 bath, basement and garage. New roof, furnace, water heater, floors, kitchen with oak cabinets & bathroom. \$109,900. 851-6900 WOD-432539



SOUTHFIELD BEAUTY - Wonderful family colonial with open floor plan, newer carpet, windows and driveway. Large kitchen, central air, family room with fireplace and formal built-ins. \$97,900. 851-6900 BRD-440825

647-7100

1000 W. Maple
Birmingham
Birmingham

851-6900

1000 Middlebell
Bloomington Hills
Bloomfield Hills

539-1000

Commercial
Division
Mon-Fri

1-800-R-MANUEL

RELOCATION
TOLL FREE

