

BUILDING & BUSINESS

F

BUILDING & BUSINESS OBSERVER STARS

This column highlights promotions, transfers, hirings and other key personnel moves within the suburban business community. Send a brief biographical summary - including the towns of residency and employment and a black-and-white photo, if desired - to: Stars, Building & Business, Observer & Eccentric Newspapers, 36251 Schoolcraft, Livonia 48150. Our fax number is (313) 591-7279.

Elizabeth Cantu of Troy was appointed director of patient administrative services with Grace Hospital. Cantu served as Grace's interim director of patient administrative services since January. She served as manager of patient accounting at Children's Hospital of Michigan from 1988 to 1993.



Cantu

Leo D. Neville of Livonia joined the Detroit/Farmington Hills-based law firm of Kaufman & Payton as an associate. Neville will concentrate on the areas of insurance and commercial law and litigation. Before joining Kaufman & Payton, Neville practiced law in the metropolitan Detroit area.



Neville

Kevin Long of Farmington Hills joined Brooks Beverage Management Inc. in Holland as assistant controller at its 7-Up Detroit operation. Long had worked for the company as staff accountant at its Columbus, Ohio, plant. Most recently, he was a senior accountant with the Borden Co. in Columbus, Ohio.



Long

Robert E. Shenton of Bloomfield Hills was promoted to associate with Plante & Moran. He joined the firm's audit staff in 1989. Shenton is based in the Troy office and specializes in real estate, municipalities and educational institutions. Shenton, a certified public accountant, is a member of the state association of CPAs.

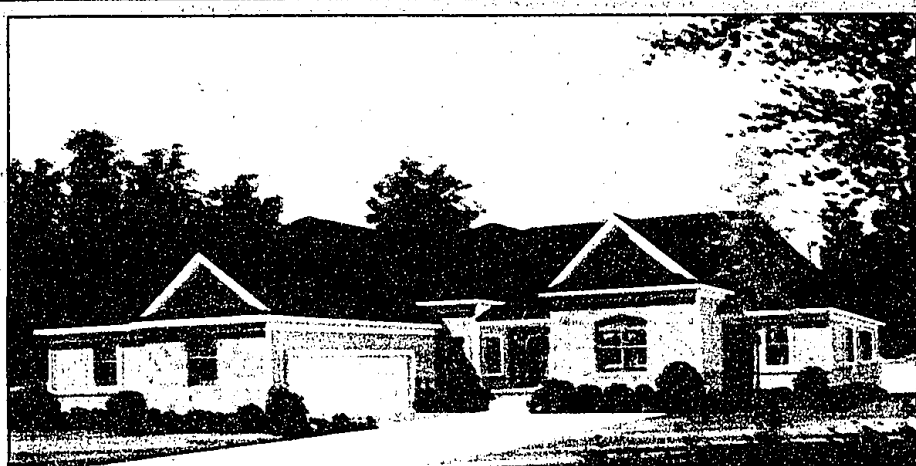


Shenton

William T. Coleman III of Southfield was confirmed by the U.S. Senate to be general counsel for the U.S. Army. The general counsel is the chief legal officer for the Department of the Army and serves as legal counsel to the Secretary of the Army. Coleman is a partner with the law firm of Pepper, Hamilton & Scheetz.



Coleman



People's Choice: This ranch built by Tanck Carpentry of Novi was voted the favorite model of visitors who attended the first weekend of Homearama.

Ranch is Homearama's most popular



Homearama, an annual showcase of idea houses sponsored by the builder's association, winds down this weekend. There's still time to check out the design, decorations and landscaping at all 13 models including the People's Choice Award winner.

By DOUG FUNKE
STAFF WRITER

A 2,250-square-foot ranch with three bedrooms, 2½ baths and an unusual 1½-story system in the basement proved to be the most popular model for visitors during opening weekend at Homearama.

The Georgetown, built by Tanck Carpentry of Novi, garnered the People's Choice Award.

Homearama, sponsored by the Builders Association of Southeastern Michigan, showcases 13 new models in Brentwood Subdivision in White Lake Township.

Tanck's model was the top vote-getter by a fairly wide margin, said Nancy Rosen, BASH spokeswoman.

"People mentioned three things - the open floor plan, the master suite with a separate sitting room and see-through fireplace, and the game room and entertainment center on the lower level," she said.

"They liked the lower level. It had a special joist system so there were only two support poles,"

Rosen said. "They liked the walk-out basement."

Tanck's Georgetown features an open dining room and living room, kitchen with eating nook including island, a family room with a vaulted ceiling and fireplace, and a half bath off one side of the entry foyer.

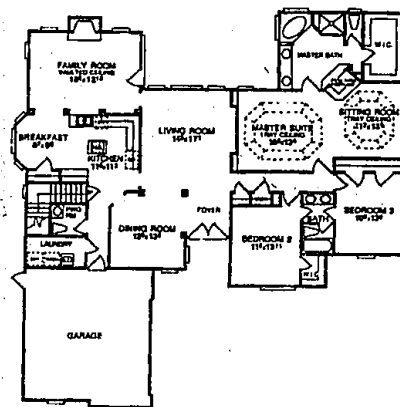
A first-floor laundry is at the entrance to the living quarters from the garage.

All three bedrooms are on the opposite side of the foyer from the common areas of the house.

The master has a separate tub and shower, walk-in closet, see-through fireplace and 11-by-12-foot sitting room. That's in addition to the 11½-by-13-foot bedroom portion of the suite.

The other two bedrooms share a full bath.

Other touches include arched windows, inlaid border hardwood floor in the dining room and cedar clapboard exterior siding with



Floor Plan

Good flow: The openness and spaciousness of the Georgetown drew rave reviews from Homearama visitors.

See POPULAR, 2F

Spotting violence before it happens

By DOUG FUNKE
STAFF WRITER

Is the workplace more violent or do isolated incidents just get more publicity?

Kenneth L. Wolf, a psychologist, executive director of Multi Resource Centers in Southfield and a consulting expert in the field, concludes that it's more dangerous nowadays in the office, on the shop floor, in the classroom and at the cash register.

He should know.

Wolf, a 49-year-old, West Bloomfield resident, has conducted numerous seminars for companies such as AT&T, Detroit Edison and the U.S. Forest Service. He is scheduled to testify on violence in the workplace before Congress in November.

Following are edited excerpts from a recent interview.

How widespread is the problem?

"Most part of the problem with violence in the workplace is there are no requirements for preventing workplace violence."

OSHA (Occupational Safety and Health Administration) requires that companies with more than 100 employees report acts of violence in the workplace.

OSHA also requires that companies with more than 100 employees report acts of violence in the workplace.



Kenneth Wolf



There are different kinds of violence. You have commercial opportunities. Hate crimes (where certain people justify a bias system). There's crime directed against security and law enforcement.

See VIOLENCE, 2F



...where luxury is a way of life!



Enjoy breathtaking views of ponds and lake.

Absolutely everything at your fingertips including year-round pool and whirlpool spas.

Glen Oaks combines the climate in elegant living with a fabulous location. Imagine...the privacy and security of your own apartment home nestled among mature trees, winding streams.

Adjacent to 12 Oaks Mall

For more information
Call (610) 348-7550

Unfurnished from \$1,300
Furnished corporate suites available