

Stores come to seniors



STAFF PHOTOS BY AMY HEALY

Reaching out: Twelve downtown Farmington merchants reached out to senior citizens Sunday at the Greenery, the extended-care facility on Grand River. As part of a national event called *Make a Difference Day*, the merchants brought some of their goods to shoppers who can't make the trip to downtown Farmington. In the photo below, Stacy Bell (left) of Fini of Farmington helps Greenery resident Jeanett Jacobs pick out earrings. At left, Helen Cole, at the Greenery to visit her brother Nathan, stops by the Touch of Romance booth table to do some Christmas shopping of her own.

CLARIFICATION

A story about the Farmington area's top volunteers in the Oct. 24 Farmington Observer should have identified Tim Zarjars as the former president of the Flanders Elementary School PTA.

Each week, the recreation division of the Farmington Hills Department of Special Services presents a synopsis of upcoming activities. For more information regarding programs, call the recreation office at 473-9570. For City Council agenda items, call the Newsline at 476-3838.

HALLOWEEN HAUNTED WALK
The seventh annual Halloween Haunted Walk will be Oct. 28 and 29 at Heritage Park. Groups, organizations or individuals who would be interested in creating a station on the trail to provide the

chilling effect of the spirits of Halloween are sought. Call Kathy at 473-9570.

CHILDREN'S PLAY

The play "The Frog Prince" will be presented by September Productions at 11 a.m. Saturday, Nov. 5, at the Farmington Hills Activities Center. Advance registration at the recreation office is \$5 for adults and \$3 for children ages 12 and under. (Tickets bought at the door will be \$6 for adults and \$4 for children ages 12 and under.)

WOMEN'S BASKETBALL MEETING

An informal meeting will be at 7 p.m. Thursday, Nov. 10, at the

RECREATION NEWS

Visitor Center in Heritage Park. The meeting will address league structure, registration data, fees and other pertinent information. This program is for men ages 18 and older.

EUCHEE MATCH

Get your partner and register for a night of playing euchee. Teams will be placed into divisions and will play a round-robin format, allowing play the entire evening. The activity will be at the Heritage Park Visitor Center from 7-10 p.m. on Friday, Nov. 4. Refreshments will be served and awards will be issued. A pre-registration fee of \$12 per team may be

paid at the Recreation Office.

PESSCHOOL CLASSES

Registration is now being accepted at the Recreation Office for dance, music, tumbling, playtime, cooking and art classes for children ages 1 1/2 to 5. Classes will be at the Heritage Park Day Camp Center starting the week of Oct. 31. Classes run for six weeks.

THANKSGIVING DAY PARADE

For all those who love a parade, regardless of age, a bus will be leave at 8 a.m. Thursday, Nov. 24, to downtown Detroit to view the Thanksgiving Day Parade. It will return at approximately 12:30 p.m. Pre-registration is required

at the Recreation Office. Fee is \$4 per person (carry-on infants are free). Children 12 and under must be accompanied by an adult.

ADULT AQUATIC EXERCISE

In cooperation with Farmington Community Education, adult exercise classes of Swim and Trim or Water Walking will be offered beginning the week of Nov. 7. Classes are held Tuesday evenings at Farmington High School and Thursday evenings at Harrison High School. Open swim is also available for the family each night from 6-7:30 p.m. and 7:30-9 p.m.



Sylvan Learning Center
• Boost your child's grades
• Build self-esteem
• Programs in reading, math, algebra, writing, SAT/ACT college prep, study skills, homework support and time management

Sylvan Learning Center
8629 W. Maple
Suite 127
West Bloomfield
737-2880

NATURAL HEALTH OUTREACH

• Body Chemistry Analysis
• Metabolism Efficiency
Improve Your Health Naturally

Joseph F. Scripsick D.R.
485-7935 9-5 M-F

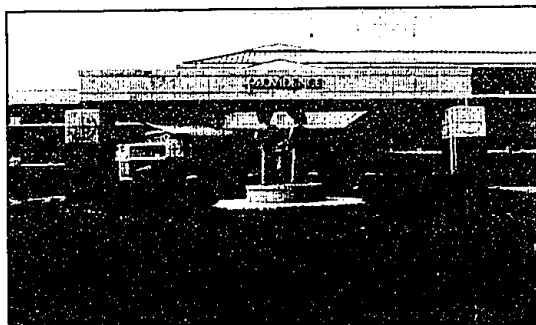
Farmington Observer

(USPS 187-840)

Published every Monday and Thursday by Observer & Commerce Newspapers, 805 E. Maple, Farmington, MI 48334-0812. Second class postage paid at Farmington, MI 48334-0812. Postmaster: Send address changes to Observer & Commerce Newspapers, 805 E. Maple, Farmington, MI 48334-0812. Telephone 484-1100.

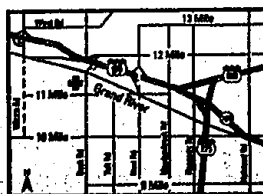
SUBSCRIPTION RATES
One year (12 issues) \$28.00
Six months (6 issues) \$15.00
Three months (3 issues) \$8.00
Single copy \$0.50

As advertising business in the Farmington Observer is subject to the conditions stated in the applicable rate card, copies of which are available from the advertising department, 21888 Farmington Road, Farmington, MI 48334 (313) 477-5452. The Farmington Observer reserves the right not to accept an advertiser's order unless it is accompanied by full payment. Payment must be made in advance and publication of an advertisement is contingent upon acceptance of the advertiser's order.

Providence Medical Center-
Providence Park:Meeting your health care needs at one
convenient location.

Providence Medical Center-Providence Park offers a full array of outpatient services to care for you and your family in our Ambulatory Center and the adjoining Medical Office Building. More than 130 doctors practicing in 35 specialties provide outpatient services at Providence Park including:

• 24-hour Emergency Care Center • Outpatient Surgery • 24-hour Recovery Care Unit • Clinical Laboratory • New Life Center
• Behavioral Medicine Services • CT Scan • Cardiopulmonary Testing
• Audiovestibular Testing • Corporate Health Services Department
• Diagnostic Radiology • Diagnostic Endoscopy Center • Nuclear Imaging • MRI • Physical Medicine and Rehabilitation • Sleep Disorders Center • Women's Imaging Center.



Providence Medical Center-Providence Park
47601 Grand River Avenue at Beck Road
Novi, Michigan (313) 340-4100

DIRECTIONS TO PROVIDENCE MEDICAL CENTER-PROVIDENCE PARK IN NOVI
From west bound I-96 — Exit at Beck Road. Turn right (south) on Beck Road. At Grand River Avenue, turn right (west). The medical center entrance is on the left off of Grand River Avenue.
From east bound I-96 — Exit at Beck Road. Turn left (south) on Beck Road. At Grand River Avenue, turn right (west). The medical center entrance is on the left off of Grand River Avenue.

PROVIDENCE

GIBSON SCHOOL
OPEN HOUSE
THURSDAY, NOVEMBER 3rd - 1-3 P.M. & 6-8 P.M.

Program for Gifted Students
• Ages 4-13 • NACIS Accredited • Financial Aid
• Experiential Focus • Small Classes
• Tutoring Programs

Child Development Center
• Open to any child ages 2 1/2-5 yrs.
• Year-round • Full or Part Time

(313) 537-8688

13225 Preston
Southfield, MI 48039

THOMAS KINKADE



© 2 - Autumn at Ashley's Cottage

This and other Thomas Kinkadee Limited Edition Canvas Lithographs, hand retouched with oil are available at:

CARDS GIFT CENTER