

HALLOWEEN

When children come door to door to entertain with their costumes and beg "Trick or Treat!" It's all part of the American dream, having your own home.

Do you have the right home for you? If not, may we take *you* door to door?



HILLS OF LONE PINE CONTEMPORARY offers very gracious living. Soaring ceilings and walls of glass with spectacular views. 28x50 family room, library. Designer's own home. Gatehouse community. (644-6300) 454511



THREE BEDROOM NEW ENGLAND RANCH nestled in the trees on large lot covering half a block. Open rooms with fireplace in living room, country kitchen, 13x16 screened and storm door breezeway. \$239,900 (644-6300) 447951



OPEN SUNDAY 1-4

HARD TO BELIEVE a Luckenbach contemporary is so near downtown Birmingham! Vaulted ceiling in living room, 4 bedrooms, family room and library. Nearly an acre. 830 Southfield. S. of Maple, W. of Southfield. (644-6300) 448209



OUTSTANDING LOCATION in the City of Bloomfield Hills. Charming six bedroom Connecticut colonial. Updated kitchen, banquet size dining room. Beautiful wooded ravine lot with lighted tennis court. (644-6300) 422791



SPECTACULAR THREE BEDROOM condominium in the Heathers. Bleached hardwood floors in kitchen-keeping room that has built-in desk and bookcase. Doorwall off dining room overlooking natural wetlands. \$297,000 (644-6300) 431755



OPEN SAT. & SUN. 2-4

CUSTOM HOME BY CASADEI in exclusive gatehouse community of Heronwoods. Dramatic foyer, family room, library. Exposed lower level. 2410 Heronwood. N. of Square Lake, W. of Telegraph. (644-6300) 427412



BEVERLY HILLS AT ITS BEST. Three bedroom pillared colonial with many updates. Lovely Florida room off family room. Finished basement. Manicured landscaping and swimming pool. \$329,900 (644-6300) 448208



ALMOST AN ACRE of wooded beauty and privacy. Three bedrooms, two baths. Perfect for the home mechanic, 24x50 attached garage, heated, insulated, drywalled. Updated kitchen and bath. \$98,900 (851-5500) 408329



OPEN SUNDAY 1-4

DRAMATIC CONTEMPORARY with open floor plan and high ceilings. Newly painted inside and out. White ceramic foyer and kitchen. Newer deck. \$242,000 - 7278 Silverleaf, N. of 14 Mile, W. of Farmington Rd. (851-5500) 453380



LAKE FRONTAGE ON ALL SPORTS Pine Lake. Three bedroom, 3 bath contemporary with much glass gives great views of the lake. 500 sq. ft. spa room with jet swim and separate jacuzzi. Deck across lake side. (644-6300) 447500



OPEN SUNDAY 2-5

2-YEAR OLD BRICK RANCH. Vaulted ceiling and fireplace in great room. 3 bedrooms, 2 full baths, first floor laundry, full basement. \$149,000. 2081 Newburgh, Troy, S. of Big Beaver, E. of John R. (589-7300) 452395



SOUTHERN EXPOSURE. This 4 bedroom, 2 1/2 bath great room colonial features unique floor plan, formal dining room, library, open kitchen, crown moldings, partially finished basement. Rochester Hills. \$213,900 (851-3500) 451180



OPEN SUNDAY 2-5

CHARMING NEAR DOWNTOWN BIRMINGHAM three bedroom colonial. Washer and dryer included with kitchen appliances. Gracious front porch. Nice yard. \$169,000 - 636 Landon, N. of Lincoln, W. of Woodward. (644-6300) 454538



BEVERLY HILLS COLONIAL with marble entry hall, library, family room with fireplace, Florida room. Four bedrooms, 2 full and 2 half baths. 1st floor laundry. Finished lower level. Patio "plus privacy." \$227,500 (644-6300) 445790



OPEN SUNDAY 1-4

A HOME FOR ALL SEASONS on a treed acre also. 4 bedrooms, 2 full and 2 half baths. Finished basement. Covered deck. \$219,900. 29878 Northbrook, Farmington Hills. S. of 13 Mile, W. of Middlebelt. (851-5500) 452445

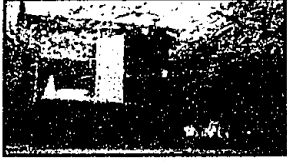


RARE WEST BLOOMFIELD THREE BEDROOM, 2 1/2 bath townhouse. Ceramic tile private entry. Family room, updated kitchen, new carpeting, freshly painted. Basement with hot tub. Two car attached garage. \$154,900 (644-6300) 440607



OPEN SUNDAY 1-4

ONLY 15 FEET FROM SYLVAN LAKE. Builders own contemporary home built on two lots. 3 bedrooms, 2 baths, 3 decks. \$239,900 - 1637 Beechcroft, Keego Harbor, N. of Orchard Lake, E. of Cass Lake. (589-7300) 453305



LARGER UNIT TOWNHOUSE with flexible floor plan. 2-3 bedrooms, 3 baths. Sitting room off master can be library or office. Finished lower level for teen or in-law suite. Front and rear decks. \$198,900 (644-6300) 445898



ONE OF THE MOST SOUGHT AFTER CONDO developments in Bloomfield Hills. Cathedral ceilings in living room and master. Rough cedar paneled garden rooms with skylights and deck. Basement. \$319,900 (644-6300) 423228



NEWER NEIGHBORHOOD with pool, tennis and sidewalks! This 4 bedroom, 2 1/2 bath colonial is located on a cul-de-sac. Kitchen with large island counter and master suite with vaulted ceiling. Orion. \$219,900 (851-3500) 452685



BEAUTIFUL ECHO PARK LOCATION and quality appointments throughout. Elegant foyer with circular stairs. Walk-out lower level with complete kitchen, billiard area, work-out area and hot tub. (644-6300) 487614



LANDMARK CITY OF BLOOMFIELD HILLS estate situated on 2 1/2 acres. 6 bedroom Tudor with an elegant interior displaying old world craftsmanship. Very gracious rooms. Pool and groundskeeper cottage too. (644-6300) 454073



SHARP TWO BEDROOM NORTH ROYAL OAK first floor condo. White and bright throughout. Updated kitchen with all appliances. Includes washer and dryer. Custom closets. Custom vertical blinds. \$44,900 (644-6300) 452487



IMPRESSIVE GRASSI BUILT COLONIAL. Large rooms, six paneled doors, open floor plan. 29x15 family room with fireplace and French doors to large deck. Library. Four bedrooms. Bloomfield Hills Schools. \$399,000 (644-6300) 434237



Weir, Manuel, Snyder & Ranke, Inc.