

CHRISTMAS SHOPPING DONE?

We seriously suggest the ultimate Christmas present for you and yours — A new home!

Only 17 days left until Christmas. All are shopping days at...

WEIR, MANUEL, SNYDER & RANKE, INC.



BEAUTIFULLY UPDATED CLASSIC four bedroom Bloomfield Hills center entrance colonial on 3/4 acre. Extensive hardwood floors. Family and Florida rooms. Finished basement with full bath. (644-6300) 460127



CUSTOM DESIGNED AND BUILT. This home will surprise you with its quality and unusual features. Dream kitchen, great room. Heated and plumbed garage. \$155,000. 6920 Drake, S. of Maple, W. off Drake. (851-5500) 459334



BLOOMFIELD TOWNSHIP RANCH with Wing Lake privileges. 3 bedrooms, 3 baths. Master suite with 9x16 sitting room. Recent family room addition with vaulted ceiling, wet bar and fireplace. Large lot. \$269,000 (644-6300) 441363



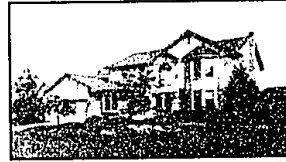
CHARACTER, CHARM AND LOCATION! Bloomfield Village colonial with 4 bedrooms, each with it's own bath. Separate guest suite. Front and back stairs. Family room, library, 3 fireplaces. Beautiful pool. (644-6300) 460547



ENJOY LAKEFRONT LIVING in this well appointed, well maintained ranch on Green Lake. Spacious living room with lake view. Beautiful custom contemporary kitchen. Lower level walk-out. \$448,900 (689-7300) 451663



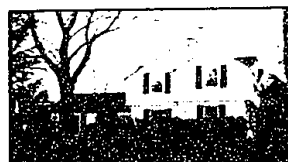
NEIGHBORHOOD OPEN HOUSE. Dramatic contemporary with open floor plan and high ceilings. Newly painted inside and out. White ceramic foyer. \$238,500. 7278 Silverleaf, N. off 14 MI., W. of Farmington Rd. (851-5500) 453380



CUSTOM HOME ON CUL-DE-SAC. Very tasteful four bedroom, 2 1/2 bath tudor with neutral decor. Includes wet bar in family room, finished basement, ceramic kitchen floor and wood foyer. Rochester. \$269,000 (651-3500) 452802



SHARP ROYAL OAK RANCH in popular Buckingham Woods next to park. Spacious living room with cove ceiling, fireplace and bookshelves. Family room, three bedrooms, deck, fenced yard. \$112,900 (644-6300) 456017



CITY OF BLOOMFIELD HILLS spacious cape cod. Family room and library. Five bedrooms, 4 1/2 baths. Beautifully landscaped grounds with a 25x50 foot pool surrounded by brick paver patio. Wonderful location. (644-6300) 456353



CONTEMPORARY FLAIR IN BLOOMFIELD HILLS. Outstanding updating. Four bedrooms. Family room with fireplace, 12x15 garden room. Ceramic tile foyer and kitchen floor. Newer deck. 2 car garage. \$169,900 (644-6300) 460125



BLOOMFIELD HILLS CUSTOM BUILT three bedroom contemporary on 1.5 wooded acres. Marble foyer, family room and library. Jennalra cooktop and Sub-Zero in kitchen. Upper and lower level decks. \$430,000 (644-6300) 445563



CHARM OF YESTERYEAR! Updated cape cod on a nicely treed acre. Fireplace in living room, country style kitchen and sunny library. Sitting room off master bedroom, could be nursery. Much is newer. \$194,500 (644-6300) 456532



SHARP UPGRADED BLOOMFIELD HILLS condo. Library, marble fireplace in living room, crown moldings in dining room. Downstairs to deck from living room, kitchen and master bedroom. Basement. \$264,900 (644-6300) 458844



WALK TO DOWNTOWN BIRMINGHAM from this updated charmer. Three bedrooms, separate dining room and first floor laundry. Large porch and spacious wood deck. Yes, a basement and two car garage. \$209,000 (644-6300) 456531



OUTSTANDING OPPORTUNITY! 2 properties: One 4-unit income, one 3-unit income for sale in Rochester's Central Business District. Fronts to Walnut, backs to Pine. 4-unit is \$185,000, 3-unit is \$150,000. (651-3500) 455835 and 455904



DRAMATIC BLOOMFIELD HILLS townhouse has a large master suite. 2nd bedroom could be den. Cathedral ceiling in living room with fireplace. \$128,000. 1630 South Hills, S. of South Blvd., W. of Squirrel. (644-6300) 40198



WALK TO DOWNTOWN BIRMINGHAM or the lake from this charming Cape Cod. Spacious family room with built-in bookcases and living room with fireplace. Three bedrooms. Sought after neighborhood. \$259,000 (644-6300) 440145



MANY RECENT UPDATES in this Farmington Hills colonial. Tile foyer/hall/kitchen. 3 bedrooms, 1 1/2 baths. Huge fenced yard, patio. \$124,000. 22389 Stockton, N. of Shawwassee, E. of Orchard Lake. (851-5500) 453352



BINGHAM WOODS CONDOMINIUM on quiet dead end street. Gracious entry with circular stairway. Country kitchen, three fireplaces. Three bedrooms, master with fireplace and deck. Family room. \$235,000 (644-6300) 449112



QUIET, SECURE 2ND FLOOR CONDO in the City of Bloomfield Hills. Large bright rooms, kitchen with eating area. Dining room balcony. Two bedrooms, 18x26 private storage room with laundry. \$89,900 (644-6300) 434833



BEVERLY HILLS COLONIAL on nearly a half acre treed lot. Slate foyer, 4 bedrooms, 2 1/2 baths, 1st floor laundry. Beautiful fieldstone fireplace in family room. \$198,900. 32520 Bloomington Ct., S. of 14 MI., E. of Laborer. (644-6300) 455518



SPACIOUS CUSTOM BUILT double wing colonial on large corner lot. Family room fireplace. 25x14 solarium with jacuzzi. Rec room w/et bar. Pella doors and windows. Pool and custom decking. \$134,900 (888-7300) 453225



BIRMINGHAM BUNGALOW WITHIN WALKING distance of parks and shops. Three bedrooms, two baths. Newer roof, furnace, garage door, central air, hardwood floors. Basement and fenced yard. \$129,900 (644-6300) 480561



CITY OF BLOOMFIELD HILLS COLONIAL. Backs to Bloomfield Open Hunt Club. Marble entry, oak kitchen, 4 bedrooms, family room and library. Renovated with great attention to detail. \$469,500 (644-6300) 446808



Weir, Manuel, Snyder & Ranke, Inc.

REALTY

10000 W. 10th Ave., Suite 100, Bloomington, MN 55420

10000 W. 10th Ave., Suite 100, Bloomington, MN 55420

10000 W. 10th Ave., Suite 100, Bloomington, MN 55420

10000 W. 10th Ave., Suite 100, Bloomington, MN 55420