

1994 Award Recipients



Anna Pearcy Sales Associate of the Year

For the fourth consecutive year, we are proud to recognize Anna Pearcy as Sales Associate of the Year.

Anna continues to show her excellence in the residential real estate market. Her total sales volume for 1994 was in excess of eleven million dollars. In addition to once again gaining entrance into the Chairman's Circle, Anna has received the coveted Legend Award. The Legend Award places Anna among a select few of the most productive and respected real estate agents in the country.

Congratulations, Anna, on an outstanding year.



Jeanne Tilford
Troy



Anna Pearcy
Rochester



Doug Woodard
Commercial/Investment

Chairman's Circle

Only a select few receive the highest award among Prudential real estate professionals - The Chairman's Circle award. This elite group is part of the top one percent of all Prudential real estate professionals nationwide. We are honored to recognize the associates from The Prudential Great Lakes Realty who have achieved this goal.

President's Circle

Less than three percent of all Prudential real estate professionals nationwide receive the coveted President's Circle Award. Qualifying are those who have received an exceptional level of performance.



Judith Ankrapp
Birmingham/Bloomfield



Cecelia Brown
Rochester



Eleanor Feeley
Rochester



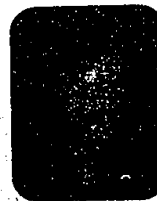
Randal Goodson
Farmington Hills



Connie Hacker
Troy



David Jensen
Birmingham/Bloomfield



Gerlinde VanDriessen
West Bloomfield



Mary Williams
Farmington Hills



Arlene Birsa
Farmington Hills



Katherine Combs
Birmingham/Bloomfield



Delores Davidson
Farmington Hills



Sandra Ducklow
Farmington Hills



Susan Heacock
Rochester



Juanita Mallmann
Rochester



Kebby Nlerescher
Troy



Sharon Nijhof
Birmingham/Bloomfield



Elke Perreault
Farmington Hills



Marilyn Robbins
Troy

Leading Edge Society

It is a prestigious honor to be a member of this exclusive group. These associates are recognized nationwide for their exceptional performance.