

OPENING EXHIBITIONS

Janice Charach Epstein Museum/Gallery
Thursday, April 27 — "Sheldon
Iden — A Tribute" continues
through June 8 in the Jewish
Community Center, 6600 W.
Maple at Drake in West Bloom-

field. Opening reception 6-8:30
p.m. Thursday, Call (810) 681-
7641.
Cranbrook Art Museum
Friday, April 28 — 1995 Student
Degree Show II will continue
through May 7 at 1221 N. Wood-

ward in Bloomfield Hills. Open-
ing reception 6-8 p.m. Friday, Call
(810) 645-3312.
J.R. N'Namdi Gallery
Friday, April 28 — An exhibit of
paintings by Mauro Machado will
continue to June 11 at 161 Town-

send in Birmingham. Opening re-
ception for the artist 6-8 p.m. Fri-
day, Call (810) 642-2700.
Southfield Civic Center Pavilion
Friday, April 28 — The South-
field Modernism Exposition, an
exposition and sale of 20th centu-

ry design, will take place 11 a.m.
to 9 p.m. Saturday, April 29, and
noon to 5 p.m. Sunday, April 30,
at Evergreen at 10-1/2 Mile. Ad-
mission is \$6 or \$5 with any of the
event's ads or listings; one paid
admission is good for both days of

the show. Gala preview 7-10 p.m.
Friday to benefit the Detroit Area
Art Doc Society; tickets are \$50
in advance, call (810) 647-5716.
Tapper's

See OPENINGS, 4E

Welcome Aboard!

We would like to extend a warm
welcome to Linda Beach, Linda has
recently joined the staff at the
Farmington office of...

REAL ESTATE ONE, INC.

For professional real estate services,
Linda can be reached at...

Real Estate One, Inc.

23366 Farmington Rd., Farmington
(810) 477-1111

Rare opportunity to acquire a desirable 1.9 acre waterfront estate
on Oakland County's most prestigious private lake.

ISLAND LAKE

BLOOMFIELD HILLS

This elegant yet unpretentious traditional home is complemented by
its private, peaceful setting and charming English floral gardens.
With 4,000 sq. ft. of living space on two levels, there are nine rooms
of comfortable size — thoughtfully designed to provide all of the
amenities one would expect in a home of this calibre.

Ideal for the executive couple or could be
easily expanded to express your individuality.

\$1,850,000

Serious inquiries: Owner, P.O. Box 1901, Naples, FL 33939-1901
Three percent broker participation invited.

FRANKLIN... (Walk to Village)



Traditional Colonial, new construction, 6,000 sq. ft. of
luxury living space. 4 bedroom suites, maid's quarter, 4
car garage. This home has everything one would expect.
Scenic Highway (13 1/2 miles), at Woodlore, between
Inkster and Franklin. Will duplicate.

MAJOR PRICE REDUCTION!
OPEN SUNDAY 2-5 P.M.

Or By Appointment (810) 855-2991 or (810) 471-4555
BINDER HOMES since 1967
Robert S. Binder Building Co., Inc.

State's largest show caps Stamp Week

STUCK ON
STAMPSJOHN
FOXWORTH

Michigan Gov.
John Engler has
issued a procla-
mation declaring
the week of April
24-30 as Michi-
gan Stamp
Week, honoring
The Plymouth
Show, Michi-
gan's largest an-
nual stamp exhi-
bition. It will
take place this
weekend, April

29-30.

Show location is the Central
Middle School at Church and
Main in downtown Plymouth.
Admission is free. Hours are 10
a.m. to 6 p.m. Saturday and 10
a.m. to 5 p.m. Sunday.

The Plymouth Show is Michi-
gan's only qualifying national
show in the APS "World Series of
Philately." More than 44 dealers
will be buying and selling stamps
and supplies.

The West Suburban Stamp
Club offers two sport covers that

salute the 1989 and 1990 champi-
on Detroit Pistons. A colorful ca-
chet and special show cancel are
featured. The Piston set of two is
\$4, plus a stamped, self-ad-
dressed envelope. Order from
VBSC, Box 700049, Plymouth
48170.

The Charles G. Pirby Co. will
conduct an auction of worldwide
stamps and covers 1 p.m. Satur-
day at the nearby Mayflower Ho-
tel.

New stamps

Seven new U.S. stamps have
been issued since April 18, says
the Postal Service. A 32-cent
stamp dedicated to Richard Nixon
was issued Wednesday, April
26, at Yorba Linda, Calif., site of
the Nixon Library and birthplace.

Among the significant events of
the Nixon presidency was the
Postal Reorganization of 1970,
which launched the U.S. Postal
Service. He served two terms in
the U.S. House, was elected to the
Senate and served as vice presi-
dent under President Eisenhower.

He was elected president in 1968
and won re-election in 1972. He
resigned Aug. 9, 1974, "to save the
nation further anguish over
Watergate."

An African-American aviation
pioneer, Bessie Coleman, takes
off on her own stamp today as the
latest Black Heritage Series
stamp. She discovered the world
of aviation by reading but her at-
tempts to learn to fly were thwarted
because schools wouldn't admit
her because of her race and gender.

She earned an international pil-
ot's license in 1921 but died in
1929 in a crash caused by jammed
controls of a plane piloted by her
mechanic.

Four "Kids Care About the En-
vironment" stamps were designed
by young artists for Earth Day
and issued as ten-cent Tuesday,
April 18. They are: Sun Power,
Earth in a Bathbub, Beach
Cleanup and Planting a Tree.
Also, a new self-adhesive stamp
depicting a "Play Over the Porch"
was also issued April 18.

BLACK HERITAGE



Coleman stamp: The Black
Heritage Series honors avi-
ation pioneer Bessie Cole-
man with a stamp issued
today.



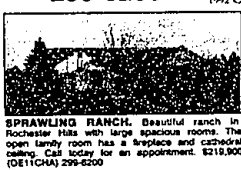
East, Inc.

2700 South Rochester Road
Rochester Hills, Michigan 48067

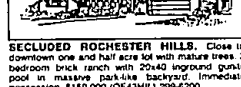
299-6200



1992 CENTURY 21 International Award Winning Office



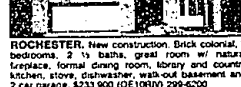
SPRAWLING RANCH. Beautiful ranch in
Rochester Hills with large spacious rooms. The
open family room with fireplace and kitchen
look massive. Pool, back yard, private
Cul-de-sac. Call today for an appointment. \$219,900
(DE11CH) 299-6200



DECLARED ROCHESTER HILLS. Close to
downtown one and half acre lot with mature trees. 3
bedroom brick ranch with 20x40 pool, pool house,
pool, in massive pool, back yard, private
Cul-de-sac. \$159,000 (DE43H) 299-6200



CLINTON FIVE VIEW. Quiet court location
with three view from living room, dining room,
kitchen and master bedroom. Updated kitchen and
carpeting. One car garage. Three bedrooms. 2 1/2
bath townhouse. \$113,500 (DE1537H) 299-6200



ROCHESTER. New construction. Brick colonial, 3
bedrooms, 2 1/2 baths, great room, natural
gas, formal dining room, updated kitchen and
carpeting. One car garage. \$233,900 (DE10H) 299-6200

EXPLORE A NEW CAREER

Where Effort = Income

One Hour Could Change Your Life

Wednesday Evening 7 P.M.

Limited Seating — Call TODAY

299-6200

EACH OFFICE IS INDEPENDENTLY OWNED AND OPERATED

CENTURY 21

CENTURY 21

CENTURY 21

CENTURY 21

CENTURY 21

CENTURY 21

CENTURY 21

CENTURY 21

CENTURY 21

CENTURY 21

CENTURY 21

CENTURY 21

CENTURY 21

CENTURY 21

CENTURY 21

CENTURY 21

CENTURY 21

CENTURY 21

CENTURY 21

CENTURY 21

CENTURY 21

CENTURY 21

CENTURY 21

CENTURY 21

CENTURY 21

CENTURY 21

CENTURY 21

CENTURY 21

CENTURY 21

CENTURY 21

CENTURY 21

CENTURY 21

CENTURY 21

CENTURY 21

CENTURY 21

CENTURY 21

CENTURY 21

CENTURY 21

CENTURY 21

CENTURY 21

CENTURY 21

CENTURY 21

CENTURY 21

CENTURY 21

CENTURY 21

CENTURY 21

CENTURY 21

CENTURY 21

CENTURY 21

CENTURY 21

CENTURY 21

CENTURY 21

CENTURY 21

CENTURY 21

CENTURY 21

CENTURY 21

CENTURY 21