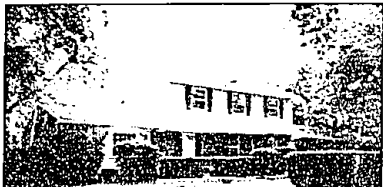


# HOMES OF DISTINCTION



## WATERFORD

**ELIZABETH LAKE LAKEFRONT!** Totally remodeled and updated! Ceramic floor in kitchen, 2-story windows, great master bedroom suite, finished lower level walk-out.  
\$139,900 (S14351) 851-4400



## BLOOMFIELD HILLS

**QUALITY BUILT** Colonial on a great 1.3 acre treed lot. Four bedrooms, 2 1/2 baths, library, cozy family room with fireplace, plus much more.  
\$248,900 (E216E) 641-1660



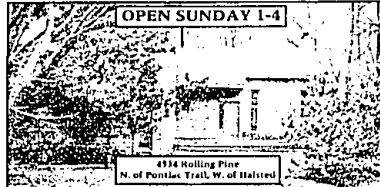
## FRANKLIN

**ATTENTION BUILDERS AND RENOVATORS!** This is arguably Franklin's finest parcel! Over 2 acres of hilly, wooded terrain. Walk-out opportunity, without exposure.  
\$299,000 (C273E) 851-4400



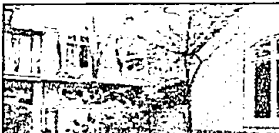
## BEVERLY HILLS

**UNIQUE AND CHARMING!** This spacious Cape features numerous updates since 1988. Walk to park & tennis courts. Master suite with sitting room, bath and whirlpool.  
\$299,900 (H189E) 647-6400



## WEST BLOOMFIELD

**TWO STORY CONTEMPORARY** on lovely wooded setting. Master bedroom with jacuzzi, upper level study, 4 bedrooms, 2 1/2 baths, beautiful finished walk-out.  
\$299,900 (R453E) 851-4400



## BLOOMFIELD HILLS

**ADAMS WOODS** 3 bedroom Townhouse on the ravines with walk-out lower level, hilltop view, hardwood floors & Berber carpeting, leaded glass windows.  
\$274,900 (G124E) 647-6400



## HUNTINGTON WOODS

**SPACIOUS CUSTOM BUILT** Ranch with open floor plan, great kitchen with breakfast room, over 2,500 sq. ft. dining room, huge finished basement.  
\$249,000 (B112E) 647-6400



## BEVERLY HILLS

**TRADITIONAL COLONIAL** located on the end of cul-de-sac, backing to woods. Features newer windows, hardwood floors & unfinished walk-out lower level.  
\$194,900 (H112E) 647-6400



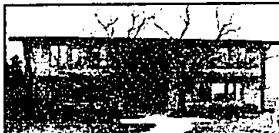
## PLEASANT RIDGE

**SPACIOUS 4 bedroom, 2 1/2 bath** brick Colonial with open floor plan. Master bedroom with private bath, finished basement with fireplace, screened summer porch.  
\$187,000 (M19E) 647-2000



## BEVERLY HILLS

**MOVE RIGHT INTO** this Ranch featuring 3 bedrooms, large family room, natural fireplace, central air, finished ceilings, newer carpeting and lovely yard.  
\$109,900 (B162E) 647-6400



## BLOOMFIELD

**SHARP Contemporary** decor in move-in condition. Condo, 2 bedrooms, 1 1/2 baths, Bloomfield Hills schools, low taxes, close to 579 and quick possession.  
\$99,900 (C359E) 647-6400

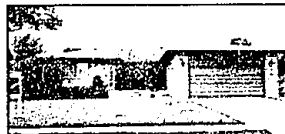
**SINCE 1948**  
**Chamberlain**  
**REALTORS®**

PHH Real Estate Network



## BLOOMFIELD

**ADAMS WOODS.** Beautiful newly decorated, desirable location on Ravines. Finish walk-out, 2 fireplaces, 3 decks, private courtyard and clubhouse.  
\$209,900 (H112E) 647-6400



## TROY

**Meticulously maintained** 1900 sq. ft. Troy ranch, desirable location on Ravines. Finish walk-out, 2 fireplaces, pool, deck, finished basement. Home Warranty.  
\$179,900 (L527E) 641-1660



## SOUTHFIELD

**GROWING FAMILY HOME** on a 100x110 lot. Over 2000 square feet, hardwood floors, fireplace, upstairs library, 4 bedrooms, 2 1/2 baths, basement and garage.  
\$101,500 (R235E) 851-4400



## ST. CLAIR SHORES

**QUICK OCCUPANCY, priced to sell.** Brick Ranch in brick area with aluminum trim, full tiled & painted basement, 2 1/2 car garage, all appliances.  
\$43,900 (C2004E) 641-1660 or 755-3070



## BEVERLY HILLS

**MOVE-IN CONDITION!** 4 bedrooms, 3 baths, updated kitchen opening to family room, 2 doorways & bay window overlooking 2 tiered deck, spacious yard.  
\$199,900 (L162E) 647-6400



## BIRMINGHAM

**TOTALLY RENOVATED** in-town townhouse offers a quiet serene location, professional decorated decor, master suite with full bath, basement, deck & carport.  
\$168,900 (W107E) 647-6400



## BIRMINGHAM

**IN-TOWN spacious 4 bedroom, 2 bath** Colonial, beautifully restored new kitchen, Berber carpeting, dark room, hardwood floors, all appliances included.  
\$147,500 (S127E) 647-6400



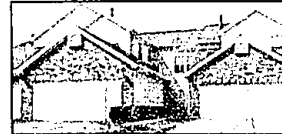
## WARREN

**MOVE-IN CONDITION!** This 3 bedroom Ranch was built in 1984 and offers a large eat-in kitchen, full basement, is well maintained and is located close to schools.  
\$99,900 (T110E) 647-6400



## WEST BLOOMFIELD

**MOVE RIGHT IN** to this 4 bedroom, 2 1/2 bath Colonial. Double door entry, all appliances, central air, family room, fireplace, finished basement, attached garage.  
\$199,900 (H653E) 851-4400



## TROY

**LUXURY** surrounds you in this impressive 3 bedroom, 4 bathroom Townhouse. White Euro kitchen, fireplace, finished lower level with wet bar. Terrific clubhouse.  
\$179,900 (C391E) 851-4400



## BLOOMFIELD

**GREAT LOCATION.** Townhouse with private setting, new deck, brick courtyard, 2 bedrooms, 1 1/2 baths, fireplace, white ceramic kitchen floor.  
\$116,500 (S155E) 647-6400



## CLINTON TOWNSHIP

**DESIRABLE** Ranch condo with first floor laundry, basement and attached garage. Move-in condition. Includes appliances. Pool and tennis court.  
\$69,900 (C385E) 641-1660

BIRMINGHAM  
(810) 647-6400

BLOOMFIELD  
(810) 640-7777

ROYAL OAK  
(840) 547-2000

TROY/ROCHESTER  
(810) 647-1660

UTICA  
(810) 755-4000

WARREN  
(810) 755-3070

WEST BLOOMFIELD  
(810) 851-4400