

Artists spout off in teapot exhibit



Call it T for terrific. "Steeped in Tradition: The Contemporary Teapot" at the Ariana Gallery in Royal Oak shows a variety of teapot forms by more than 100 potters from the United States, Canada and England.

Imagination was brewing for these pieces, some of which are functional as well as artistic. Here are the serious, the whimsical, the fantastic. Some colors seem to be gently luminous, while others shine like jewels. Some forms look as though they are rearing back,

their spouts ready to burst forth in song or declaration. Figures and flowers are among the shapes and forms.

One of the teapots by Michigan artist Susan Beiner looks like a glazed jumble of tiny bottles. John Gilick of Farmington Hills presents small teapots with a natural, swirling design in the surface. The teapot by Michael Duval of Michigan has a perky character, with its arrangement of stripes, dots and bright colors. A teapot by Michigan artist Paul Young is compact with a bamboo handle.

Pong Choo presents miniature teapots, while those by Brad Schweiger are large. Tim Mather's teapots are like parts of machinery or little machines

themselves. A shape by Hop Sakwa features marbles and such icons as Mickey Mouse, a circus poster and a salt label. A teapot by Kathy Triplett is flat and has an unusual shape like a device out of science fiction. Eric VanElteren's teapot is joyous with white dots standing out from the surface and rockers for the base.

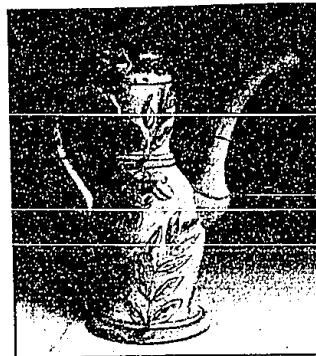
A form by Jonathan Kaplan is tall, slender and black, like the model of an art deco building. A set by Stephen Schiffer has sleek, low shapes. Lisa Stinson's set is like a totem pole, with pot, creamer and sugar bowl stacked on top of one another.

The exhibit continues to Oct. 14 at 119 S. Main (call (810) 540-8810).

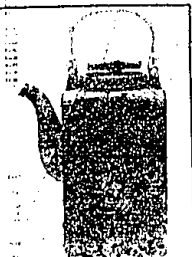
Landscapes

"Landscapes — Real or Imagined," the 51st annual exhibit of the Birmingham Society of Women Painters, continues this week at the Birmingham Bloomfield Art Association, 1618 S. Cranbrook Road, Birmingham (call (810) 644-0860). The Rental/Sales Gallery at the BBAA is featuring "Small Paintings," priced at \$100 or less, by BSWP members. All proceeds from sales will benefit the BBAA building fund.

Mary Klemic is Oakland County arts editor. You can call her at (810) 901-2569. Her fax number is (810) 644-1314.



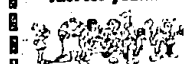
'Her Wistaria': This flowery teapot, majolica on terracotta, is by Linda Arbuckle of Florida.



Square granite teapot: Among the items in "Steeped in Tradition: The Contemporary Teapot" at the Ariana Gallery in Royal Oak is this piece by John Neely of Ohio.



Ready-To-Go Favorites Just for you...



Groups 15-100 package rates available

LIVONIA

25625 Plymouth Rd. (East of Farmington Rd.) (313) 281-3550

Other Buddy's Locations

FARMINGTON

25625 Plymouth Rd. (East of Farmington Rd.) (313) 281-3550

WATERFORD

25625 Plymouth Rd. (East of Farmington Rd.) (313) 281-3550

ROYAL OAK

25625 Plymouth Rd. (East of Farmington Rd.) (313) 281-3550

BLOOMFIELD

25625 Plymouth Rd. (East of Farmington Rd.) (313) 281-3550

Bring this ad in for...

\$2 Off

Any Large Pizza or Large Antipasto or Large Greek Salad

VOTED No. 1 PIZZA

Call (313) 281-3550

Call (313) 281-3550

Call (313) 281-3550

Call (313) 281-3550

Call (313) 281-3550

Call (313) 281-3550

Call (313) 281-3550

Call (313) 281-3550

Call (313) 281-3550

Call (313) 281-3550

Call (313) 281-3550

Call (313) 281-3550

Call (313) 281-3550

Call (313) 281-3550

Call (313) 281-3550

Call (313) 281-3550

Call (313) 281-3550

Call (313) 281-3550

Call (313) 281-3550

Call (313) 281-3550

Call (313) 281-3550

Call (313) 281-3550

Call (313) 281-3550

Call (313) 281-3550

Call (313) 281-3550

Call (313) 281-3550

Call (313) 281-3550

Call (313) 281-3550

Call (313) 281-3550

Call (313) 281-3550

Call (313) 281-3550

Call (313) 281-3550

Call (313) 281-3550

Call (313) 281-3550

Call (313) 281-3550

Call (313) 281-3550

Call (313) 281-3550

Call (313) 281-3550

Call (313) 281-3550

Call (313) 281-3550

Call (313) 281-3550

Call (313) 281-3550

Call (313) 281-3550

Call (313) 281-3550

Call (313) 281-3550

Call (313) 281-3550

Call (313) 281-3550

Call (313) 281-3550

Call (313) 281-3550

Call (313) 281-3550

Call (313) 281-3550

Call (313) 281-3550

Call (313) 281-3550

Call (313) 281-3550

Call (313) 281-3550

Call (313) 281-3550

Call (313) 281-3550

Call (313) 281-3550

Call (313) 281-3550

Call (313) 281-3550

Call (313) 281-3550

Call (313) 281-3550

Call (313) 281-3550

Call (313) 281-3550

Call (313) 281-3550

Call (313) 281-3550

Call (313) 281-3550

Call (313) 281-3550

Call (313) 281-3550

Call (313) 281-3550

Call (313) 281-3550

Call (313) 281-3550

Call (313) 281-3550

Call (313) 281-3550

Call (313) 281-3550

Call (313) 281-3550

Call (313) 281-3550

Call (313) 281-3550

Call (313) 281-3550

Call (313) 281-3550

Call (313) 281-3550

Call (313) 281-3550

Call (313) 281-3550

Call (313) 281-3550

Call (313) 281-3550

Call (313) 281-3550

Call (313) 281-3550

Call (313) 281-3550

Call (313) 281-3550

Call (313) 281-3550

Call (313) 281-3550

Call (313) 281-3550

Call (313) 281-3550

Call (313) 281-3550

Call (313) 281-3550

Call (313) 281-3550

Call (313) 281-3550

Call (313) 281-3550

Call (313) 281-3550

Call (313) 281-3550

Call (313) 281-3550

Call (313) 281-3550

Call (313) 281-3550

Call (313) 281-3550

Call (313) 281-3550

Call (313) 281-3550

Call (313) 281-3550

Call (313) 281-3550

Call (313) 281-3550

Call (313) 281-3550

Call (313) 281-3550

Call (313) 281-3550

Call (313) 281-3550

Call (313) 281-3550

Call (313) 281-3550

Call (313) 281-3550

Call (313) 281-3550

Call (313) 281-3550

Call (313) 281-3550

Call (313) 281-3550

Call (313) 281-3550

Call (313) 281-3550

Call (313) 281-3550

Call (313) 281-3550

Call (313) 281-3550

Call (313) 281-3550

Call (313) 281-3550

Call (313) 281-3550

Call (313) 281-3550

Call (313) 281-3550

Call (313) 281-3550

Call (313) 281-3550

Call (313) 281-3550

Call (313) 281-3550

Call (313) 281-3550

Call (313) 281-3550

Call (313) 281-3550

Call (313) 281-3550

Call (313) 281-3550

Call (313) 281-3550

Call (313) 281-3550

Call (313) 281-3550

Call (313) 281-3550

Call (313) 281-3550

Call (313) 281-3550

Call (313) 281-3550

Call (313) 281-3550

Call (313) 281-3550

Call (313) 281-3550

Call (313) 281-3550

Call (313) 281-3550

Call (313) 281-3550

Call (313) 281-3550

Call (313) 281-3550

Call (313) 281-3550

Call (313) 281-3550

Call (313) 281-3550

Call (313) 281-3550

Call (313) 281-3550

Call (313) 281-3550

Call (313) 281-3550

Call (313) 281-3550

Call (313) 281-3550

Call (313) 281-3550

Call (313) 281-3550

Call (313) 281-3550

Call (313) 281-3550

Call (313) 281-3550

Call (313) 281-3550

Call (313) 281-3550

Call (313) 281-3550

Call (313) 281-3550

Call (313) 281-3550

Call (313) 281-3550

Call (313) 281-3550

Call (313) 281-3550

Call (313) 281-3550

Call (313) 281-3550

Call (313) 281-3550

Call (313) 281-3550

Call (313) 281-3550

Call (313) 281-3550

Call (313) 281-3550

Call (313) 281-3550

Call (313) 281-3550

Call (313) 281-3550

Call (313) 281-3550

Call (313) 281-3550

Call (313) 281-3550

Call (313) 281-3550

Call (313) 281-3550