

SWIMMING

Following is the final list of girls best swim times and diving scores.

200 MILEY RELAY (state cut 1:57.00)

Uvonia Stevenson . . . 1:51.33
Farmington Hills Mercy . . . 1:52.28
Plymouth Salem . . . 1:54.44
Northampton . . . 1:55.80
Farmington . . . 1:59.91

200 FREESTYLE (state cut 2:01.50)

Anne Arisio (Stevenson) . . . 1:50.96
Julie Kern (Stevenson) . . . 1:57.18
Lisa Richardson (Farmington) . . . 1:58.09
Tina Caranicas (Stevenson) . . . 2:01.34
Betsy Lambert (Mercy) . . . 2:01.74
Katie Cortis (Mercy) . . . 2:01.83
Teri Hanson (Canton) . . . 2:01.92
Audrey Hala (Canton) . . . 2:02.48
Dana Schwann (Farmington) . . . 2:02.60
Meredith Spiegel (Mercy) . . . 2:02.84

200 INDIVIDUAL MEDLEY (state cut 2:18.00)

Anne Arisio (Stevenson) . . . 2:03.95
Bethany Buddie (Mercy) . . . 2:10.59
Katie Cortis (Stevenson) . . . 2:14.23
Julie Gallagher (Stevenson) . . . 2:15.28
Meredith Spiegel (Mercy) . . . 2:16.82
Betsy Lambert (Farmington) . . . 2:17.27
Lisa Richardson (Farmington) . . . 2:17.80
Julie Kern (Stevenson) . . . 2:19.25
Teri Hanson (Canton) . . . 2:20.82
Yvonne Lynn (Salem) . . . 2:21.10

50 FREESTYLE (state cut 1:24.48)

Anne Arisio (Stevenson) . . . 1:24.23
Dana Schwann (Farmington) . . . 1:24.99
Teri Hanson (Canton) . . . 1:25.11
Cheri Farber (N. Farmington) . . . 1:25.57
Danielle Clayton (Mercy) . . . 1:25.61
Came D'Amico (Salem) . . . 1:25.62
Kristen Stone (John Glenn) . . . 1:25.66
Jordyn Goodroad (Stevenson) . . . 1:25.67
Lisa Richardson (Farmington) . . . 1:25.71
Adrienne Turn (John Glenn) . . . 1:25.74

100 DRYD (state cut 2:58.95)

Beth Gallagher (Stevenson) . . . 2:58.95
Zoe Yockley (Salem) . . . 2:59.40
Lisa Salora (Canton) . . . 2:59.45
Shelley Underwood (Salem) . . . 2:59.46
Sarah Coombs (Glenn) . . . 2:59.47
Jana Stoyanovich (Churchill) . . . 2:59.48
Kasey Hock (Weymouth) . . . 2:59.49
Laura Benza (Salem) . . . 2:59.50
Deanna Eave (Farmington) . . . 2:59.51
Dorothy Christensen (Churchill) . . . 2:59.52

100 BUTTERFLY (state cut 3:01.50)

Anne Arisio (Stevenson) . . . 3:07.45
Katie Cortis (Stevenson) . . . 3:07.46
Teri Hanson (Canton) . . . 3:07.47
Jennifer Macdonald (Mercy) . . . 3:07.48
Adrienne Turn (Glenn) . . . 3:07.49
Betsy Lambert (Stevenson) . . . 3:07.50
Julie Kern (Stevenson) . . . 3:07.51
Maria McKenney (Stevenson) . . . 3:07.52
Annamarie Scano (Farmington) . . . 3:07.53
Kristen Stone (N. Farmington) . . . 3:07.54

100 FREESTYLE (state cut 1:48.00)

Anne Arisio (Stevenson) . . . 1:48.02
Lisa Richardson (Farmington) . . . 1:48.03
Dana Schwann (Farmington) . . . 1:48.04
Teri Hanson (Canton) . . . 1:48.05
Lyndsey Grondin (Mercy) . . . 1:48.06
Adrienne Turn (John Glenn) . . . 1:48.07
Marilyn Williams (Salem) . . . 1:48.08
Emily Suresh (Mercy) . . . 1:48.09
Jennifer Macdonald (Mercy) . . . 1:48.10
Came D'Amico (Salem) . . . 1:48.11

500 FREESTYLE (state cut 8:28.39)

Anne Arisio (Stevenson) . . . 8:28.39
Julie Kern (Stevenson) . . . 8:28.40
Katie Cortis (Mercy) . . . 8:28.41
Audrey Hala (Salem) . . . 8:28.42
Betsy Lambert (Mercy) . . . 8:28.43
Tina Caranicas (Stevenson) . . . 8:28.44
Dorothy Christensen (Churchill) . . . 8:28.45
Julie Kern (Stevenson) . . . 8:28.46
Betsy Lambert (Stevenson) . . . 8:28.47
Bathory Buddie (Mercy) . . . 8:28.48
Beth Gallagher (Stevenson) . . . 8:28.49

200 FREESTYLE RELAY (state cut 1:44.48)

Uvonia Stevenson . . . 1:42.69
Farmington Hills Mercy . . . 1:42.78
Plymouth Salem . . . 1:43.87
Northampton . . . 1:44.17
Farmington Hills Harrison . . . 1:44.24

100 BACKSTROKE (state cut 1:08.49)

Anne Arisio (Stevenson) . . . 1:08.49
Adrienne Turn (John Glenn) . . . 1:08.50
Julie Gallagher (Stevenson) . . . 1:08.51
Yvonne Lynn (Salem) . . . 1:08.52
Came D'Amico (Salem) . . . 1:08.53
Cheri Farber (N. Farmington) . . . 1:08.54
Teri Hanson (Canton) . . . 1:08.55
Katie Cortis (Mercy) . . . 1:08.56
Jennifer Macdonald (Mercy) . . . 1:08.57
Beth Gallagher (Stevenson) . . . 1:08.58

100 BREASTSTROKE (state cut 1:11.88)

Beth Gallagher (Mercy) . . . 1:06.17
Meredith Spiegel (Mercy) . . . 1:06.63
Betsy Lambert (Stevenson) . . . 1:10.08
Meg Wegmuller (Mercy) . . . 1:11.33
Heather Aher (N. Farmington) . . . 1:12.52
Jordyn Goodroad (Stevenson) . . . 1:12.64
Dana Schwann (Farmington) . . . 1:13.20
Katie Bonner (Salem) . . . 1:13.77
Heather Dallas (Stevenson) . . . 1:13.94
Dana Dolekan (Mercy) . . . 1:14.00

400 FREESTYLE RELAY (state cut 8:51.83)

Uvonia Stevenson . . . 3:38.78
Farmington Hills Mercy . . . 3:44.50
Plymouth Salem . . . 3:48.13
Farmington Hills Harrison . . . 3:48.59
Plymouth Canton . . . 3:51.60

THE WEEK AHEAD

PROF HOCKEY

Friday, Dec. 8
Liv. Stevenson vs. Birmingham
at Livonia's Edgar Arena, 8 p.m.
Redford CC vs. Red Wing Arena
at Redford Ice Arena, 8 p.m.

Saturday, Dec. 9

Liv. Stevenson at Portage No. 3, 3:30 p.m.
Liv. Stevenson at Cranston, 7 p.m.
Redford CC vs. Wyandotte Roseville
at Redford Ice Arena, 8 p.m.

BOYS BASKETBALL

Friday, Dec. 8
Liv. Stevenson at D.H. Annapolis, 7 p.m.
Liv. Stevenson at D.H. Annapolis, 7 p.m.
Liv. Stevenson at D.H. Annapolis, 7 p.m.

Saturday, Dec. 9

Liv. Stevenson at D.H. Annapolis, 7 p.m.
Liv. Stevenson at D.H. Annapolis, 7 p.m.
Liv. Stevenson at D.H. Annapolis, 7 p.m.

Sunday, Dec. 10

Liv. Stevenson at D.H. Annapolis, 7 p.m.
Liv. Stevenson at D.H. Annapolis, 7 p.m.
Liv. Stevenson at D.H. Annapolis, 7 p.m.

Monday, Dec. 11

Liv. Stevenson at D.H. Annapolis, 7 p.m.
Liv. Stevenson at D.H. Annapolis, 7 p.m.
Liv. Stevenson at D.H. Annapolis, 7 p.m.

Tuesday, Dec. 12

Liv. Stevenson at D.H. Annapolis, 7 p.m.
Liv. Stevenson at D.H. Annapolis, 7 p.m.
Liv. Stevenson at D.H. Annapolis, 7 p.m.

Wednesday, Dec. 13

Liv. Stevenson at D.H. Annapolis, 7 p.m.
Liv. Stevenson at D.H. Annapolis, 7 p.m.
Liv. Stevenson at D.H. Annapolis, 7 p.m.

Crusaders exit early from NAIA volleyball tourney

BY C.J. RISAK

STAFF WRITER

The dreamlike bliss that engulfed the Madonna University team after the first day of the NAIA National Volleyball Championship, held Nov. 20-Dec. 2 at Point Loma Nazarene College in San Diego, gave way to harsh reality on the second.

The Lady Crusaders won their opening match of pool play in straight sets over Seton Hill (Pa.), Nov. 20, but they suffered a pair of defeats Thursday against a pair

of seeded teams, eliminating them from title contention.

Madonna's 1-3 record in the 20-team national tournament should not detract from a sparkling season, however. The Crusaders finished with a 48-14 record, setting a record for single-season wins.

Best of all, it was a young team, with just one senior (Tiffany Joseph) to be lost to graduation.

"The competition was great," coach Jerry Abraham said. "We needed to play at the highest level possible. We had to be at the top

of our game; we were just a step short."

Madonna, one of the 12 unseeded teams (the top eight were seeded), opened the tournament with a convincing 15-2, 15-5, 15-4 victory over Seton Hill. Kelly McCauland (Redford Union), Heather Steinhilber and Meg Paris each collected six kills, with Julie Martin (Livonia Stevenson) setting five.

Madonna played No. 2-seeded Puget Sound (Wash.) in its first match Thursday and came up

short, losing 15-1, 15-12, 15-7.

Puget Sound didn't lose until the NAIA final, when it was beaten by champion Brigham Young, Hawaii.

Martin's eight kills led Madonna. McCauland had five and Erin Coonout four. McCauland also had three blocks and six digs.

The Crusaders had little time to recover, facing No. 7 Columbia (Mo.) three hours later. Madonna 3-15, 15-4, 15-6, 15-10 as Columbia improved to 54-3.

It was Madonna's pivotal match. A win would have kept the Crusaders in contention, with a win over unseeded Doris (Iowa) all that stood between them and a spot in the quarterfinals.

Wu Dan, a member of the Chinese national team, led Columbia with 15 kills; she also had four blocks and four aces.

The loss made Friday's match against Doris inconsequential, which pretty well describes Madonna's lackluster performance in the 15-6, 15-17, 15-3, 15-4 defeat.



YOU GET A DETROIT MERCURY VILLAGER GS

ANN ARBOR

Apollo

2100 W. Stadium Blvd.
at Liberty

(313) 668-6100

DEARBORN

Kris

21531 Grand River Ave.
Between Southfield and Telegraph

(313) 274-8800

DETROIT

Bob Maxey

16991 Mack Ave.
at Cadieux

(313) 885-4000

DETROIT

Park Motor

18100 Woodward Ave.
Opposite Palmer Park

(313) 869-5000

FARMINGTON

Bob Dusseau

31615 Grand River Ave.
at Black West of Orchard Lake Rd.

(810) 474-3170

GARDEN CITY

Stu Evans

32000 Ford Rd.
Just West of Merriman

(313) 413-4300

NOVI

Varsity

49331 Grand River
1961 Block 5, of Wilcox Exit

(810) 305-5300

PLYMOUTH

Hines Park

40601 Ann Arbor Rd.
at I-275

1-800-350-MERC

ROCHESTER HILLS

Crissman

1183 South Rochester Rd.
Between Hamlin and Arvon Rd.

(810) 652-4200

ROSEVILLE

Arnold

39600 Gratiot
at 12 Mile Rd.

(810) 445-6000

ROYAL OAK

Diamond

221 N. Main St.
at 11 Mile Rd.

(810) 541-6830

SOUTHFIELD

Star

24150 W. 12 Mile Rd.
at Telegraph

(810) 354-4900

SOUTHGATE

Stu Evans

16600 Fort Street
at Pennington

(313) 285-8600

STERLING HEIGHTS

Crest

36100 Van Dyke
at 15 1/2 Mile Road

(810) 939-6000

TROY

Bob Borst

1950 West Maple
Troy Motor Mall

(810) 643-6600

WATERFORD

Mel Farr

4178 Highland Rd. (M-39)
2 Miles West of Telegraph

(810) 683-9500

YPSILANTI

Sesi

950 East Michigan
5 Miles West of I-75

(313) 363-0112

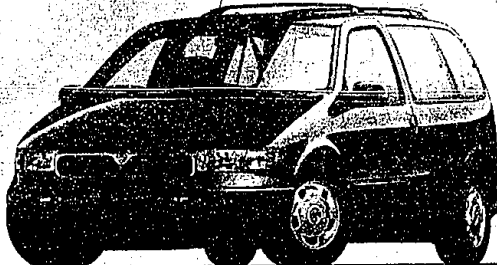
Imagine Getting Everything You Want Including Value.

Standard Features: • 3.0-liter OHC V-6 engine • Dual air bags • Multi-point electronic fuel injection • Front-wheel drive • Four-wheel anti-lock brake system • Power rack-and-pinion steering • Rear window washer/wiper • Solar tint glass • Electronic AM/FM stereo cassette • Front cornering lamps • Side window defoggers • Child-proof lock on sliding door • GS Preferred Equipment Package 692A: • CFC-free air conditioner • Power windows/locks • Dual power mirrors • 7-passenger seating • Luggage rack • 8-way power driver's seat • Aluminum wheels

\$299

Per Month, 24-Month Lease

24-Month Lease
First Month's Payment . . . \$299
Down Payment (net of RCL cash) . . . \$1,450
Refundable Security Deposit . . . \$100
Cash Due at Signing . . . \$249



1996 Mercury Villager GS

For About
\$20,603

Standard Features: • 4.6-liter SOHC V-8 engine • Dual air bags • 4-speed electronic automatic overdrive transmission • Speed-sensitive, variable-assist power steering • 4-wheel power disc brakes • CFC-free air conditioner • Electronic AM/FM stereo radio with cassette • 6-way power driver's seat • Heated power outside mirrors • GS Preferred Equipment Package 157A: • Fingerprint speed control • Power lock group • Front and rear carpeted floor mats • Illuminated entry system • Locking radial spoke wheel covers



1996 Mercury Grand Marquis GS

Standard Features: • Dual air bags • 3.0-liter V-6 engine • Sequential multi-port electronic fuel injection • Tilt steering column • Particulate air filtration system • Solar tint glass • CFC-free air conditioner • Four-wheel anti-lock brake system • Power windows • Dual power heated mirrors • Flip-fold center console • Cross car beam construction • Illuminated entry system Preferred Equipment Package 451A: • Fingerprint speed control • Power lock group • 6-way power driver's seat • Cast aluminum wheels • Front carpeted floor mats • Light group

\$329

Per Month, 24-Month Lease

24-Month Lease
First Month's Payment . . . \$329
Down Payment (net of RCL cash) . . . \$1,445
Refundable Security Deposit . . . \$100
Cash Due at Signing . . . \$279

Save Up To
\$500
In Reward
Bonus Money



1996 Mercury Sable GS

*MSRP. Mercury Villager GS with 692A MSRP \$23,995 and the Mercury Sable GS with 451A MSRP \$24,995 exclude tax, license, title, dealer fees. Lease payments based on average capitalized cost of \$27,795 for Villager GS and \$29,995 for Sable GS. Lessee may have option to buy vehicle at lease end and price negotiated with dealer at signing. Lessee responsible for routine wear and tear and mileage over 50,000 at 15¢/mile. Credit approval/brokerage fees required by Ford Credit. Total amount of monthly payments is \$1,111 for Villager and \$1,111 for Sable. For complete lease terms and conditions, call 1-800-350-MERC. Dealer's actual delivery price based on dealer stock by 1/1/96. *MSRP. Mercury Grand Marquis GS with 157A. This is an average of prices based on an independent survey of Metro Detroit Mercury dealers in November 9, 1995. Dealer price higher, some lower. Tax, title and license fees extra. See your dealer for their price and terms. Customers eligible for \$500 rebate. RCL reward yourself most by leasing your vehicle between 9/22/95 and 1/31/96. A customer's lease terminated early will qualify if it is terminated within the program date. Customers who have previously terminated their lease before lease end will not qualify. *MSRP. Mercury Sable GS with 451A MSRP \$24,995 exclude tax, license, title, dealer fees. Lease payments based on average capitalized cost of \$27,795 for Sable GS. Lessee may have option to buy vehicle at lease end and price negotiated with dealer at signing. Lessee responsible for routine wear and tear and mileage over 50,000 at 15¢/mile. Credit approval/brokerage fees required by Ford Credit. Total amount of monthly payments is \$1,111 for Sable GS. For complete lease terms and conditions, call 1-800-350-MERC. Dealer's actual delivery price based on dealer stock by 1/1/96. *MSRP. Mercury Sable GS with 451A MSRP \$24,995 exclude tax, license, title, dealer fees. Lease payments based on average capitalized cost of \$27,795 for Sable GS. Lessee may have option to buy vehicle at lease end and price negotiated with dealer at signing. Lessee responsible for routine wear and tear and mileage over 50,000 at 15¢/mile. Credit approval/brokerage fees required by Ford Credit. Total amount of monthly payments is \$1,111 for Sable GS. For complete lease terms and conditions, call 1-800-350-MERC. Dealer's actual delivery price based on dealer stock by 1/1/96. *MSRP. Mercury Sable GS with 451A MSRP \$24,995 exclude tax, license, title, dealer fees. Lease payments based on average capitalized cost of \$27,795 for Sable GS. Lessee may have option to buy vehicle at lease end and price negotiated with dealer at signing. Lessee responsible for routine wear and tear and mileage over 50,000 at 15¢/mile. Credit approval/brokerage fees required by Ford Credit. Total amount of monthly payments is \$1,111 for Sable GS. For complete lease terms and conditions, call 1-800-350-MERC. Dealer's actual delivery price based on dealer stock by 1/1/96. *MSRP. Mercury Sable GS with 451A MSRP \$24,995 exclude tax, license, title, dealer fees. Lease payments based on average capitalized cost of \$27,795 for Sable GS. Lessee may have option to buy vehicle at lease end and price negotiated with dealer at signing. Lessee responsible for routine wear and tear and mileage over 50,000 at 15¢/mile. Credit approval/brokerage fees required by Ford Credit. Total amount of monthly payments is \$1,111 for Sable GS. For complete lease terms and conditions, call 1-800-350-MERC. Dealer's actual delivery price based on dealer stock by 1/1/96. *MSRP. Mercury Sable GS with 451A MSRP \$24,995 exclude tax, license, title, dealer fees. Lease payments based on average capitalized cost of \$27,795 for Sable GS. Lessee may have option to buy vehicle at lease end and price negotiated with dealer at signing. Lessee responsible for routine wear and tear and mileage over 50,000 at 15¢/mile. Credit approval/brokerage fees required by Ford Credit. Total amount of monthly payments is \$1,111 for Sable GS. For complete lease terms and conditions, call 1-800-350-MERC. Dealer's actual delivery price based on dealer stock by 1/1/96. *MSRP. Mercury Sable GS with 451A MSRP \$24,995 exclude tax, license, title, dealer fees. Lease payments based on average capitalized cost of \$27,795 for Sable GS. Lessee may have option to buy vehicle at lease end and price negotiated with dealer at signing. Lessee responsible for routine wear and tear and mileage over 50,000 at 15¢/mile. Credit approval/brokerage fees required by Ford Credit. Total amount of monthly payments is \$1,111 for Sable GS. For complete lease terms and conditions, call 1-800-350-MERC. Dealer's actual delivery price based on dealer stock by 1/1/96. *MSRP. Mercury Sable GS with 451A MSRP \$24,995 exclude tax, license, title, dealer fees. Lease payments based on average capitalized cost of \$27,795 for Sable GS. Lessee may have option to buy vehicle at lease end and price negotiated with dealer at signing. Lessee responsible for routine wear and tear and mileage over 50,000 at 15¢/mile. Credit approval/brokerage fees required by Ford Credit. Total amount of monthly payments is \$1,111 for Sable GS. For complete lease terms and conditions, call 1-800-350-MERC. Dealer's actual delivery price based on dealer stock by 1/1/96. *MSRP. Mercury Sable GS with 451A MSRP \$24,995 exclude tax, license, title, dealer fees. Lease payments based on average capitalized cost of \$27,795 for Sable GS. Lessee may have option to buy vehicle at lease end and price negotiated with dealer at signing. Lessee responsible for routine wear and tear and mileage over 50,000 at 15¢/mile. Credit approval/brokerage fees required by Ford Credit. Total amount of monthly payments is \$1,111 for Sable GS. For complete lease terms and conditions, call 1-800-350-MERC. Dealer's actual delivery price based on dealer stock by 1/1/96. *MSRP. Mercury Sable GS with 451A MSRP \$24,995 exclude tax, license, title, dealer fees. Lease payments based on average capitalized cost of \$27,795 for Sable GS. Lessee may have option to buy vehicle at lease end and price negotiated with dealer at signing. Lessee responsible for routine wear and tear and mileage over 50,000 at 15¢/mile. Credit approval/brokerage fees required by Ford Credit. Total amount of monthly payments is \$1,111 for Sable GS. For complete lease terms and conditions, call 1-800-350-MERC. Dealer's actual delivery price based on dealer stock by 1/1/96. *MSRP. Mercury Sable GS with 451A MSRP \$24,995 exclude tax, license, title, dealer fees. Lease payments based on average capitalized cost of \$27,795 for Sable GS. Lessee may have option to buy vehicle at lease end and price negotiated with dealer at signing. Lessee responsible for routine wear and tear and mileage over 50,000 at 15¢/mile. Credit approval/brokerage fees required by Ford Credit. Total amount of monthly payments is \$1,111 for Sable GS. For complete lease terms and conditions, call 1-800-350-MERC. Dealer's actual delivery price based on dealer stock by 1/1/96. *MSRP. Mercury Sable GS with 451A MSRP \$24,995 exclude tax, license, title, dealer fees. Lease payments based on average capitalized cost of \$27,795 for Sable GS. Lessee may have option to buy vehicle at lease end and price negotiated with dealer at signing. Lessee responsible for routine wear and tear and mileage over 50,000 at 15¢/mile. Credit approval/brokerage fees required by Ford Credit. Total amount of monthly payments is \$1,111 for Sable GS. For complete lease terms and conditions, call 1-800-350-MERC. Dealer's actual delivery price based on dealer stock by 1/1/96. *MSRP. Mercury Sable GS with 451A MSRP \$24,995 exclude tax, license, title, dealer fees. Lease payments based on average capitalized cost of \$27,795 for Sable GS. Lessee may have option to buy vehicle at lease end and price negotiated with dealer at signing. Lessee responsible for routine wear and tear and mileage over 50,000 at 15¢/mile. Credit approval/brokerage fees required by Ford Credit. Total amount of monthly payments is \$1,111 for Sable GS. For complete lease terms and conditions, call 1-800-350-MERC. Dealer's actual delivery price based on dealer stock by 1/1/96. *MSRP. Mercury Sable GS