

ELAINE

The Elaine: This comfortable house is designed for privacy with well-separated bedrooms. It requires a deep, narrow lot for construction.

## Elaine perfect for guests

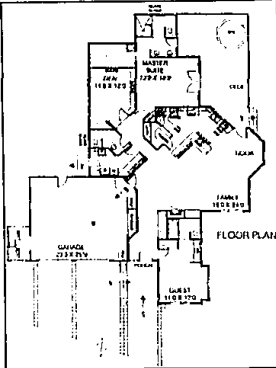
For a study kit of the Elaine (404-29), send \$10.00, to Landmark Designs, P.O. Box 2307, OE48, Eugene, OR 97402 (be sure to specify plan name and number). For a collection of plan books featuring our most popular house plans, send \$20 to Landmark, or call 1-800-562-1151.

The floor plan of the Elaine is a design that will work exceptionally well for empty nesters who frequently entertain overnight guests or that share their house with an aging parent or college-age offspring. This 2,189-square-foot beauty has a multitude of amenities and requires a deep, narrow lot for construction.

Immediately to the right of the entry is an impressive suite that will provide privacy and comfortable accommodations for any visitors or extended family members. The guest suite includes a functional vanity with mirror above and several handy drawers below, plenty of windows to enjoy the view and a private bathroom.

The open family room is spacious and made for entertaining. The added features are an optional wet bar TV/stereo center and a fireplace guaranteed to keep everyone warm as long as the conversation continues.

A contiguous nook, with an elegant built-in hatch and bay window, will surely make any meal more gratifying. The walk-through kitchen is not only roomy, it has all the attributes that a conscientious host would consider essential.



The plan: The large family room includes both a fireplace and an entertainment center. The kitchen is open and keeps the cook connected to the action.

Meals may be prepared and served with the cook in the household not having to miss out on any of the fun. Here you have a raised eating bar, cooktop, double ovens, appliance center and walk-in pantry. When the early sun is shining, breakfast on the back deck will be a treat.

The large master suite, with a personal door to the deck and the relaxing spa, has a generous sleeping area, huge walk-in closet with built-in ironing board and a private bathroom featuring twin basins. Extra storage is available behind the door to the suite, and there is a linen repository off the hall.

Adjacent to the master suite is a cozy den with a small closet and room for books along two walls. A hall bath is nearby, and an angled utility room has a sink and a small broom closet.

The attached two-car garage contains more storage space, room for a freezer, and a skylit service sink for quick cleanup after a weekend project.

## Manufacturer revises fences

One of the leading manufacturers of vinyl fence systems, Bufftech, Inc., has made revisions with some of its fence systems in order to meet the BOCA (Building Official & Code Administrators) pool codes. In addition, the changes meet the codes of SBCCI (Southern Building Code Congress International) and CABO (Congress of American Building Officials).

The appeal of maintenance free vinyl fencing is a natural to pool owners. Vinyl fencing has become the fastest growing product segment within the fence industry throughout the United States. The tremendous growth is attributed to the beauty of the material coupled with meeting the demands of today's lifestyles... long lasting durability and no maintenance.

Pat Sadler, one of Bufftech's Product Engineers explained, "BOCA pool codes address many issues including rail spacing, picket spacing, as well as gates and gate latches. Being an industry leader, it made sense to look at adapting to the strictest codes."

"We're aware that the BOCA pool codes are being adopted by more and more counties and states throughout the U.S.," stated Dave Blum, Bufftech's president. "The benefits of Bufftech's maintenance free vinyl fence systems around pools are of major value to consumers. For areas that are now using the BOCA pool codes, this adaptation on our part will give those homeowners an opportunity to have the best fence around their pool."

Bufftech has more than 55 fence systems of various styles and heights that meet the BOCA pool codes. All their fence systems carry a 20 year non pro-rated warranty. They are guaranteed not to chip, peel, fade, rust, rot or crack. The fence will never need painting or staining.

To find out more about Bufftech maintenance free vinyl fencing, either call your local fence dealer or call the factory for a local referral at 716 685 1600 ext. 270 or write them at Bufftech Inc., Dept. HIT, 2625 Walden Ave., Buffalo, NY 14225.

## ABSOLUTELY MOVE IN CONDITION

OPEN HOUSE SAT. & SUNDAY'S 12-6:00 OR BY APPOINTMENT

A beautiful 2,200 sq. ft. home situated on an acre, nestled behind 120' frontage with heavily wooded pine trees. This beautiful new home features 4 bedrooms, whirlpool in master suite, 2 1/2 baths, family room with fireplace, designer white kitchen, crown molding, 2 story foyer, custom carpeting, central air, 2 car garage, city sewer and water. Located minutes from sways and golf course. A MUST SEE!!

EVERETT DUTTON  
Pinecrest

AUBURN HILLS  
WONT LASTASKING \$210,000  
BITE: (810) 377-3205  
OFFICE: (810) 471-3887

## IMMEDIATE OCCUPANCY! Custom Homes in Brighton's Exclusive Eagle Ravine Community



Dramatic open ranch plan with high ceilings features great room with fireplace, formal dining room, gourmet island kitchen with oak floor, 1900 sq. ft. Designer-decorated builder's model \$230,900.



Elegant open one-and-a-half story plan with main floor master suite. Great room, library, fireplace, formal dining room, gourmet island kitchen, two bedrooms and loft upstairs. Walk-out lower level. 2,600 sq. ft. Still time to choose colors. \$289,900.



Stunning ranch home plan with many luxury features. Great room, fireplace, formal dining room, gourmet island kitchen. Main floor laundry, deck. 1900 sq. ft. Still time to choose colors. \$232,900.



Call (810) 227-9800 or (810) 737-3553 for more information.

Open daily 12 a.m.-6 p.m., closed Thurs.  
Located off Spencer Road, between Pleasant Valley and Old US-23

## Sneak Preview World Class Living with Incomparable Amenities

Announcing the Sneak Preview of 5000 Town Center, standard of World Class living, is now available in condominium ownership. With the finest amenities to captivate your imagination, 5000 Town Center Private Residences fulfills your every need and desire.

- Endless Panoramic Views
- 24 Hour Concierge
- Doorman Service
- Valet Parking Available
- Lighted Tennis Courts
- Heated Outdoor Pool
- Private Health Club and Sauna
- Washer and Dryer in Every Home
- Close to Expressways and Transportation
- And Much More!

One Bedrooms from \$70,000  
Two Bedrooms from \$99,000  
Three Bedrooms from \$163,000

Sales Center is open daily 10 a.m. - 6 p.m., Sunday Noon - 5 p.m., and by appointment.

Located at the corner of Evergreen Road and Center Drive at Prudential Town Center, in Southfield.



5000 TOWN CENTER  
Private  
5000  
Southfield

Visit our site at  
810

Realtor participation invited. Complimentary valet parking for model condominium visitors. Prices subject to change without notice. Exclusive marketing by Town Center Realtors, Inc.

Another fine property brought to you by

