

LOTTERY

The Lotto jackpot was worth at least \$2.2 million. The Michigan Lottery numbers for Saturday, Feb. 10, 1996 are:

DAILY 4: 0461

LOTTO: 5,12,13,26,34,37

DAILY 3: 096

Arthritis Today

JOSEPH J. WEISS, M.D. RHEUMATOLOGY
18829 Farmington Road
Livonia, Michigan 48152
Phone: (810) 478-7860

WHEN JOINT INJECTIONS DO NOT WORK

Injecting joints with a cortisone-like medicine is effective therapy. Your physician bypasses the effects of cortisone on the body by bringing a small amount to a focused area.

However, such therapy is not always successful.

The most evident reason is that the drug did not get fully into the joint. In heavy people the knee or shoulder joint may be buried deep in the body. At times a part such as the arête is sufficiently swollen to obscure the landmarks used to precisely locate the part.

Another cause for failure is that the inflammation is more than localized. For instance, in gout the intensity of the attack may overcome the first injection, just as the initial pass of water may not put out the forest fire.

A third cause for scant relief is that the arthritic process is so advanced that injections will no longer suffice. You can only put as much as a full size number of times, eventually the worn out bone just cannot go any more.

No laboratory tests reveal which of the above is the reason for failure. Only one more injection will tell if the lack of effect was chance, error, or was a signal that you and your doctor must turn to other therapy. Usually surgery is to obtain relief.



OBITUARIES

ANNA M. OSIWALA

Mrs. Osiwala, 65, of Detroit died Feb. 5 in Botaford Hospital, Farmington Hills.

Born in Detroit, Mrs. Osiwala was a caregiver in Independence Home Care. She was a graduate of Felician Academy, Detroit. Survivors include her sons, Edward, Jeffrey and Timothy; brother, Tony Prabycki; sister, Rose Hennick; six grandchildren and one great-grandchild.

Services were at the Thayer-Rock Funeral Home, Farmington, the Rev. Larry Austin officiating. Burial was in Glen Eden Cemetery, Livonia.

Memorials may be made to the American Heart Association, P.O. Box 721129, Berkeley 48072.

MABEL EDITH WIXOM

Mrs. Wixom, 74, of Farmington Hills died Feb. 5.

Born in Farmington Township, Mrs. Wixom was a kitchen manager in the Farmington Schools.

Survivors include her husband, Russell; daughters, Ann Hol-lowell, Betty Friedrichsen and Sue Wilson; brothers, Howard White, William White, Kenneth

White and Gerald White; sisters, Helen Kirby, Ruth Tobel, Ethel Ovinik, Geraldine Moore and Kathy Fyfe; 12 grandchildren and 16 great-grandchildren.

Services were at the Heeney-Sundquist Funeral Home, Farmington, the Rev. Victor Halboth of Grace Lutheran Church officiating. Burial was in North Farmington Cemetery.

DOROTHY M. KOBMAN

Mrs. Kobman, 95, of Farmington died Feb. 7 in Milford Nursing Home.

Born in Maywood, Ill., Mrs. Kobman was a homemaker. She was a member of the Farmington Chapter OES 239 and a former member of Salem United Church of Christ, Farmington.

Survivors include her son, Donald; three grandchildren and six great-grandchildren.

Services were at the Thayer-Rock Funeral Home, Farmington, the Rev. Larry Austin officiating. Burial was in Glen Eden Cemetery, Livonia.

Memorials may be made to Farmington Community Library, 23550 Liberty, Farmington 48335.

Farmington Observer

(USPS 187 840)

Published every Monday and Thursday by Observer & Eccentric Newspapers, 805 E. Maple, Farmington, MI 48335. Second-class postage paid at Farmington, MI. POSTMASTER: Send address changes to Observer & Eccentric Newspapers, 805 E. Maple, Farmington MI 48335. Telephone 644-1100.

Subscription Rates: One year (12 issues) \$12.00. Home Delivery Service: \$12.00. Single copies: 75¢. Classified advertising: \$1.00 per line per week. Display advertising: \$1.00 per line per week. All advertising published in the Farmington Observer is subject to the conditions stated in the applicable rate card copies of which are available from the advertising department, 33411 Grand River, Farmington, MI 48335. (810) 477-5450. The Farmington Observer reserves the right not to accept an advertisement in whole or in part. Advertisers have the authority to send this newspaper and only publication of an advertisement shall constitute their acceptance of the advertiser's order.

CLEAN YOUR HOME - FOR CASH -

DOOR RECEPTION
FURNITURE LENSES PICTURES
LAMP KITCHEN WARE KIDS TOYS
NO APPOINTMENT NECESSARY

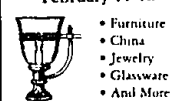


CONSIGNMENT

Interiors
OPEN 7 DAYS 347-4731
HIGHLAND LAKES 420 W. 7 MILE

Jeanne Fishman ANTIQUE Show & Sale

Thursday - Sunday
February 15-18



• Furniture
• China
• Jewelry
• Glassware
• And More

Thurs. Fri.-Sat. Sun.
10-9 10-6 12-5

ORCHARD
WEST BLOOMFIELD • MICHIGAN
On hard Lake Road • North of Maple
851-7727

Gift her with gold hearts.

Show her you care on Valentine's Day with a gift that will last a lifetime! Gold hearts—some set with precious stones—guaranteed to please every woman.



REDFORD JEWELRY
25950 W. Six Mile
Redford Twp.
(12 BLOCKS WEST OF BECH DALY)
(313) 592-8119
Mon. - Sat. 10-6 p.m.
Thurs. 10-8 p.m.

JET

"An Off-Broadway Professional Theatre in West Bloomfield"

presents

Harvey Fierstein's



TORCH SONG TRILOGY

Directed By NICHOLAS CALANNI

PREVIEWS February 14 - 18 (M-Fri)

PERFORMANCES

February 18 - March 10

AARON DE ROY THEATRE

Jewish Community Center • 6600 W. Maple Road • West Bloomfield

TICKETS (810) 788-2000 or (810) 645-8668

Senior, Student & Group Discounts
Infrared Hearing Devices Available

Down-to-earth interest rates for your dream boat.

New Boat Loan

9.50%
Fixed Rate

Used Boat Loan

10%
Fixed Rate

Credit Union ONE's low interest rates keep payments comfortable whether you're buying a new or used boat, or refinancing. Get a pre-arranged loan from Credit Union ONE before you go cruising for a boat, and you'll have the bargaining power you need to cut the best deal.

You can join!

Administrative Offices
Farmington
450 E. Nine Mile Road
Farmington, MI 48335
810-788-1810



Detroit Medical Ctr. 313-839-7030
Farmington Hills 810-855-1101
Livonia 810-560-1300
Royal Oak 810-256-5010
Shelby Township 810-254-5500
Southwest Detroit 810-840-2260
Sterling Heights 810-678-7181
Troy 810-675-5800
Westland 313-425-1520

• NCUA

Member FDIC

READER SERVICE

HOW TO REACH US

- Newsroom: (810) 477-5450.
- Newsroom fax: (810) 477-9722.
- Sports: (313) 953-2141.
- Reader Comment Line: (313) 953-2042.
- Classified Advertising: (313) 591-0900.
- Display Advertising: (313) 591-2300.
- Home Delivery: (810) 901-4716.
- Cable/TV Weekly: (313) 953-2182.

HOMELINE: (313) 953-2020

- Open houses and new developments in your area.
- Free real estate seminar information.

CLASSIFIED AFTER HOURS: (313) 591-0900

- Place classified ads at your convenience.

CIRCULATION AFTER HOURS

OAKLAND COUNTY: (810) 901-4716

- Request subscriptions at your convenience.

FAX LINE: 1(800) 967-5904

- You can use a MasterCard, or Visa* to access the following information from our classified ads. This service is available by noon Wednesday and Saturday:
- Item No. 9402: Looking for a place to rent or someone to share an apartment with? Get a listing of our rental classifieds. Cost: \$5.95.
- Item No. 9700: Collectibles: Auction sales, Antiques, crafts, rummage sales. Cost: \$5.95.
- Item No. 9800: Recreation: boats, motorcycles, campers, airplanes, etc. Cost: \$5.95.
- Item No. 9822: Vehicles: Used trucks, vans and all makes of automobiles. Cost: \$39.95.

O&E ON-LINE

OAKLAND COUNTY: (810) 901-4711

- You can access On-Line with just about any communications software—PC or Macintosh. On-Line users can:
- Send and receive unlimited email.
- Access all features of the Internet—Telnet, Gopher, WWW and more.
- Read electronic editions of the Observer & Eccentric newspapers.
- Chat with users across town or across the country.

To begin your On-Line exploration, call (313) 591-0903 or (810) 901-4711 with your modem.

At the login prompt, type: new

At the key prompt, type: 7082

Feel free to call us if you need help signing on to O&E Online on our bulletin board service hotline: (313) 953-2266.

THE
Observer & Eccentric
NEWSPAPERS