

## MARKET

from

## Real Estate One, INC.

Our 67<sup>th</sup> Year

and growing faster than ever.

## Real Estate One

is ranked #1 in Michigan by:

- National Relocation and Real Estate Magazine
- Real Trends
- Crain's Detroit Business
- The Real Estate Professional

The Real Estate One Family of Companies  
Berkley & MacKenzie • Johnson & Johnson • Ralph Mann

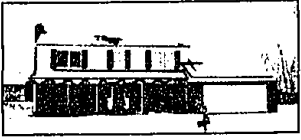
**FARMINGTON HILLS**  
MOVE IN AND UNPACK! Almost new 3 bedroom, 2 1/2 bath home. Large kitchen w/white cabinets, family room w/fireplace and vaulted ceiling, first floor laundry, full basement & 2 car garage.  
\$194,900 (PEN1) 810-851-1900



**TROY**  
OPEN SUNDAY 1-4. 1249 JUDY. NEWER TROY RANCH. In quiet low traffic area. Open floor plan, great room with vaulted ceiling, large unfinished basement.  
\$194,900 (557995) 810-644-4700



**WATERFORD**  
A MUST SEE. 3 bedroom contemporary with 2 1/2 baths, located in a fine newer community of like homes. 1st floor master suite with whirlpool tub and more.  
\$189,900 (546P) 810-363-8307



**ROME**  
NEAT AS A PIN. Colonial in cul-de-sac location. Sidewalks, custom deck, fireplace & gas fireplace. Hardwood floors in entry, den & kitchen. Master suite w/cathedral ceiling. Easy access to x-way.  
\$189,000 (MANT00) 810-852-6500



**FARMINGTON**  
GRANDMA'S HOUSE WITH A TWIST. Hardwood floors, charming accents, modern baths and built ins, skylight, family room and finished basement. Walk to downtown Farmington.  
\$178,500 (BRO) 810-477-1111



**COMMERCE**  
FANTASTIC FULL LAKE VIEW! Stunning Lower Straits main lakefront Ranch. Open floor plan with vaulted ceilings. Master bedroom with private lake. Country living yet close to shopping.  
\$169,888 (3331N) 810-363-8307



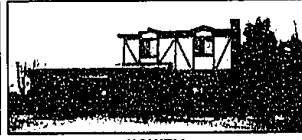
**FARMINGTON HILLS**  
IMMACULATE RANCH CONDO w/2 bedrooms, 2 full & 2 half baths. Totally neutral w/high ceilings, huge windows & wonderful master suite, finished basement w/family room & 2 car attached garage.  
\$159,900 (HIL) 810-851-1900



**WEST BLOOMFIELD**  
UNIQUE WEST BLOOMFIELD FARMHOUSE. Home has so much potential. Wrap-around front porch, 18x13 unfinished room upstairs could be a master bedroom, some hardwood flooring, beautiful wooded lot.  
\$155,000 (3800GL) 810-363-8307



**AUBURN HILLS**  
COUNTRY LIVING w/city convenience. 4 bedroom, 2 1/2 bath Colonial on large lot. Finished basement, 2 car attached garage, family room w/fireplace, all new windows, screened porch, fenced yard. Excellent schools.  
\$153,000 (SLO605) 810-852-6500



**HOWELL**  
ESCAPE THE SUBURBS. If you long for tranquility, you'll love this 3 bedroom brick Colonial w/natural fireplace, country kitchen, many updates, 6 acres w/pond & fenced meadows.  
\$149,900 (A383B) 313-281-0700



**SOUTHFIELD**  
PRIVACY IN SOUTHFIELD. Lovely 4 bedroom with 2 full baths, family room with fireplace, walk-out lower level to wrap around deck. All this and more.  
\$149,900 (24CMCA) 810-559-2300



**SOUTH LYON**  
PREMIUM LOCATION. Cul-de-sac wooded rear yard, deck, porch, master bedroom with walk-in closet, 1 1/2 baths, basement, 2 car attached garage, built in 1980. Close to town.  
\$149,900 (EAG) 810-851-1900



**SOUTHFIELD**  
3 BEDROOM CONDO. Elegant living in marble pillared portico, secure and monitored building. In-house laundry, balcony off each outside wall, tennis court, jacuzzi, heated lighted garage.  
\$145,000 (158PRO) 810-559-2300



**ROCHESTER**  
FRESH, BRIGHT, updated in town 3 bedroom home. Approximately 1900 sq. ft. including all levels. Complete new bath, new carpet, fresh paint, some windows, spacious kitchen & dining.  
\$143,000 (CAT132) 810-652-8500



**BIRMINGHAM**  
A DOLLHOUSE. Immaculate, updated bungalow across from park, 3 bedrooms, beautiful marble bath, hardwood floors, garage, white wood kitchen w/breakfast nook leading to new deck, walk to town.  
\$140,000 (EMM) 810-851-1900



**SOUTHFIELD**  
PRESTIGIOUS GREEN DOLPHIN SUB. This home comes with a Home Warranty, sprinkler system, partially finished basement with a possible fourth bedroom or rec room, central air.  
\$132,000 (248THO) 810-559-2300



**SOUTHFIELD**  
IMPRESSIONS large brick Cape Cod. Park-like setting on a corner lot. Quality construction, newer foyer floor and carpeting. Kitchen has new cabinets. Brinks alarm, new furnace.  
\$129,900 (214LAT) 810-559-2300



**CLAWSON**  
BEAUTIFUL BUNGALOW. Sharp 4 bedroom home, 2 baths, large family & living room, updated kitchen, new windows & new vinyl siding.  
\$126,800 (631BOW) 810-559-2300



**UTICA**  
YOUR SEARCH IS OVER! Spacious living room, dining room & kitchen in this 3 bedroom, 2 bath Ranch w/2 car garage, fenced yard, newer windows, Utica Schools & more!  
\$119,900 (FRE474) 810-652-6500



**MILFORD**  
MILFORD VILLAGE RANCH. Three bedrooms, 1 1/2 baths, finished basement, neutral decor, many improvements, ready for new owner to enjoy. Close to elementary school and shopping. Home Warranty.  
\$98,000 (6052B3) 810-644-4700



**CLAWSON**  
INSTANTLY APPEALING! Winner of "CITY BEAUTIFICATION AWARD" for exterior appearance and landscaping. Bright, brick, 3 bedroom home with many updates. Open floor plan, excellent condition, fenced yard.  
\$89,999 (004885) 810-644-4700



**FARMINGTON HILLS**  
IMMACULATE 2 bedroom Condo located in Echo Valley has 2 baths, air conditioning, formal dining plus ample storage space and is close to everything!  
\$84,900 (ECH) 810-477-1111



**OAK PARK**  
T.L.C. needed in this 4 bedroom brick Ranch with partially finished basement. Located in the Farmdale school district. Must see this home.  
\$74,900 (24OREN) 810-559-2300



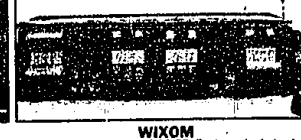
**BLOOMFIELD**  
WHY RENT WHEN YOU CAN BUY! Updated & very nicely decorated 2 bedroom, 2 bath upper condo in lovely Bloomfield complex with Bloomfield School! Spacious, special & affordable!  
\$68,900 (55625A) 810-644-4700



**SOUTHFIELD**  
MOVE IN CONDITION. 3 bedroom, brick front Ranch with large kitchen, immediate occupancy. Deck, garage, fenced yard and much more. Home service contract.  
\$64,900 (POH) 810-477-1111



**BLOOMFIELD**  
AFFORDABLE BLOOMFIELD CONDO. Why rent? Today's interest rates affords you the opportunity to BUY this lovely 1 bedroom, 1 bath, Bloomfield condo. Clubhouse, pool! Convenient location. Enjoy!  
\$63,900 (001322B) 810-644-4700



**WIXOM**  
GREAT BUY 2 BEDROOM CO-OP. Features include clubhouse, pool, central air, patio & basement. Both bedrooms have newer carpet, all appliances stay. Affordable living in community in Wixom.  
\$49,900 (HEL) 810-477-1111

Good for one FREE, 12-page personalized analysis of the value of your home in today's rapidly changing market.

Real Estate One's exclusive MarketPower program is the most advanced system for market evaluation available today. MarketPower includes:

- Mapping of listed & sold properties in your area
- Value charts for your specific home
- Expected market time
- Asking price versus sale price in your area
- Sale price per square foot

And much more!

Call: 810-952-5590

"Real Estate One Continued on Front of this Section"

Administration: 810-2229  
Allen Park: 393-1250  
Ann Arbor: 393-1616  
Birmingham: 647-1166  
Bloomfield Hills: 641-1709  
Bloomfield Hills: 477-1999  
Clarkston: 625-0201  
Canton Twp: 226-1925  
Dearborn: 271-8911

Dearborn Hgts: 585-1294  
Detroit: 271-0890  
Livestock: 477-1167  
Farmington: 477-1111  
Farmington Hills: 471-1999  
Grass Roots: 881-0504  
Lakes Area: 363-8917  
Livestock: 26-1929  
Livestock: 681-1665

Northville-Troy: 348-4131  
Farmington Hills: 345-7669  
Livestock: 452-4599  
Livestock: 771-8809  
Royal Oak: 514-9109  
Southfield-Livestock: 559-2300  
St. Clair Shores: 774-6667  
Livestock: 226-1929  
Livestock: 292-8059  
Livestock: 417-8539

Traverse City: 518-4111  
Livestock: 518-4111  
Livestock: 675-6606  
Livestock: 522-5599  
Livestock: 651-1999  
Livestock: 356-2090  
Livestock: 651-2000  
Livestock: 800-521-3719  
Livestock: 226-1929

Traverse City: 518-4111  
Livestock: 518-4111  
Livestock: 675-6606  
Livestock: 522-5599  
Livestock: 651-1999  
Livestock: 356-2090  
Livestock: 651-2000  
Livestock: 800-521-3719  
Livestock: 226-1929

Traverse City: 518-4111  
Livestock: 518-4111  
Livestock: 675-6606  
Livestock: 522-5599  
Livestock: 651-1999  
Livestock: 356-2090  
Livestock: 651-2000  
Livestock: 800-521-3719  
Livestock: 226-1929

Traverse City: 518-4111  
Livestock: 518-4111  
Livestock: 675-6606  
Livestock: 522-5599  
Livestock: 651-1999  
Livestock: 356-2090  
Livestock: 651-2000  
Livestock: 800-521-3719  
Livestock: 226-1929

Traverse City: 518-4111  
Livestock: 518-4111  
Livestock: 675-6606  
Livestock: 522-5599  
Livestock: 651-1999  
Livestock: 356-2090  
Livestock: 651-2000  
Livestock: 800-521-3719  
Livestock: 226-1929

Traverse City: 518-4111  
Livestock: 518-4111  
Livestock: 675-6606  
Livestock: 522-5599  
Livestock: 651-1999  
Livestock: 356-2090  
Livestock: 651-2000  
Livestock: 800-521-3719  
Livestock: 226-1929

Traverse City: 518-4111  
Livestock: 518-4111  
Livestock: 675-6606  
Livestock: 522-5599  
Livestock: 651-1999  
Livestock: 356-2090  
Livestock: 651-2000  
Livestock: 800-521-3719  
Livestock: 226-1929

Traverse City: 518-4111  
Livestock: 518-4111  
Livestock: 675-6606  
Livestock: 522-5599  
Livestock: 651-1999  
Livestock: 356-2090  
Livestock: 651-2000  
Livestock: 800-521-3719  
Livestock: 226-1929

Traverse City: 518-4111  
Livestock: 518-4111  
Livestock: 675-6606  
Livestock: 522-5599  
Livestock: 651-1999  
Livestock: 356-2090  
Livestock: 651-2000  
Livestock: 800-521-3719  
Livestock: 226-1929

Traverse City: 518-4111  
Livestock: 518-4111  
Livestock: 675-6606  
Livestock: 522-5599  
Livestock: 651-1999  
Livestock: 356-2090  
Livestock: 651-2000  
Livestock: 800-521-3719  
Livestock: 226-1929

Traverse City: 518-4111  
Livestock: 518-4111  
Livestock: 675-6606  
Livestock: 522-5599  
Livestock: 651-1999  
Livestock: 356-2090  
Livestock: 651-2000  
Livestock: 800-521-3719  
Livestock: 226-1929

Traverse City: 518-4111  
Livestock: 518-4111  
Livestock: 675-6606  
Livestock: 522-5599  
Livestock: 651-1999  
Livestock: 356-2090  
Livestock: 651-2000  
Livestock: 800-521-3719  
Livestock: 226-1929

Traverse City: 518-4111  
Livestock: 518-4111  
Livestock: 675-6606  
Livestock: 522-5599  
Livestock: 651-1999  
Livestock: 356-2090  
Livestock: 651-2000  
Livestock: 800-521-3719  
Livestock: 226-1929

Traverse City: 518-4111  
Livestock: 518-4111  
Livestock: 675-6606  
Livestock: 522-5599  
Livestock: 651-1999  
Livestock: 356-2090  
Livestock: 651-2000  
Livestock: 800-521-3719  
Livestock: 226-1929

Traverse City: 518-4111  
Livestock: 518-4111  
Livestock: 675-6606  
Livestock: 522-5599  
Livestock: 651-1999  
Livestock: 356-2090  
Livestock: 651-2000  
Livestock: 800-521-3719  
Livestock: 226-1929

Traverse City: 518-4111  
Livestock: 518-4111  
Livestock: 675-6606  
Livestock: 522-5599  
Livestock: 651-1999  
Livestock: 356-2090  
Livestock: 651-2000  
Livestock: 800-521-3719  
Livestock: 226-1929

Traverse City: 518-4111  
Livestock: 518-4111  
Livestock: 675-6606  
Livestock: 522-5599  
Livestock: 651-1999  
Livestock: 356-2090  
Livestock: 651-2000  
Livestock: 800-521-3719  
Livestock: 226-1929

Traverse City: 518-4111  
Livestock: 518-4111  
Livestock: 675-6606  
Livestock: 522-5599  
Livestock: 651-1999  
Livestock: 356-2090  
Livestock: 651-2000  
Livestock: 800-521-3719  
Livestock: 226-1929

Traverse City: 518-4111  
Livestock: 518-4111  
Livestock: 675-6606  
Livestock: 522-5599  
Livestock: 651-1999  
Livestock: 356-2090  
Livestock: 651-2000  
Livestock: 800-521-3719  
Livestock: 226-1929

Traverse City: 518-4111  
Livestock: 518-4111  
Livestock: 675-6606  
Livestock: 522-5599  
Livestock: 651-1999  
Livestock: 356-2090  
Livestock: 651-2000  
Livestock: 800-521-3719  
Livestock: 226-1929

Traverse City: 518-4111  
Livestock: 518-4111  
Livestock: 675-6606  
Livestock: 522-5599  
Livestock: 651-1999  
Livestock: 356-2090  
Livestock: 651-2000  
Livestock: 800-521-3719  
Livestock: 226-1929

Traverse City: 518-4111  
Livestock: 518-4111  
Livestock: 675-6606  
Livestock: 522-5599  
Livestock: 651-1999  
Livestock: 356-2090  
Livestock: 651-2000  
Livestock: 800-521-3719  
Livestock: 226-1929

Traverse City: 518-4111  
Livestock: 518-4111  
Livestock: 675-6606  
Livestock: 522-5599  
Livestock: 651-1999  
Livestock: 356-2090  
Livestock: 651-2000  
Livestock: 800-521-3719  
Livestock: 226-1929

Traverse City: 518-4111  
Livestock: 518-4111  
Livestock: 675-6606  
Livestock: 522-5599  
Livestock: 651-1999  
Livestock: 356-2090  
Livestock: 651-2000  
Livestock: 800-521-3719  
Livestock: 226-1929

Traverse City: 518-4111  
Livestock: 518-4111  
Livestock: 675-6606  
Livestock: 522-5599  
Livestock: 651-1999  
Livestock: 356-2090  
Livestock: 651-2000  
Livestock: 800-521-3719  
Livestock: 226-1929

Traverse City: 518-4111  
Livestock: 518-4111  
Livestock: 675-6606  
Livestock: 522-5599  
Livestock: 651-1999  
Livestock: 356-2090  
Livestock: 651-2000  
Livestock: 800-521-3719  
Livestock: 226-1929

Traverse City: 518-4111  
Livestock: 518-4111  
Livestock: 675-6606  
Livestock: 522-5599  
Livestock: 651-1999  
Livestock: 356-2090  
Livestock: 651-2000  
Livestock: 800-521-3719  
Livestock: 226-1929

Traverse City: 518-4111  
Livestock: 518-4111  
Livestock: 675-6606  
Livestock: 522-5599  
Livestock: 651-1999  
Livestock: 356-2090  
Livestock: 651-2000  
Livestock: 800-521-3719  
Livestock: 226-1929

Traverse City: 518-4111  
Livestock: 518-4111  
Livestock: 675-6606  
Livestock: 522-5599  
Livestock: 651-1999  
Livestock: 356-2090  
Livestock: 651-2000  
Livestock: 800-521-3719  
Livestock: 226-1929

Traverse City: 518-4111  
Livestock: 518-4111  
Livestock: 675-6606  
Livestock: 522-5599  
Livestock: 651-1999  
Livestock: 356-2090  
Livestock: 651-2000  
Livestock: 800-521-3719  
Livestock: 226-1929

Traverse City: 518-4111  
Livestock: 518-4111  
Livestock: 675-6606  
Livestock: 522-5599  
Livestock: 651-1999  
Livestock: 356-2090  
Livestock: 651-2000  
Livestock: 800-521-3719  
Livestock: 226-1929

Traverse City: 518-4111  
Livestock: 518-4111  
Livestock: 675-6606  
Livestock: 522-5599  
Livestock: 651-1999  
Livestock: 356-2090  
Livestock: 651-2000  
Livestock: 800-521-3719  
Livestock: 226-1929

Traverse City: 518-4111  
Livestock: 518-4111  
Livestock: 675-6606  
Livestock: 522-5599  
Livestock: 651-1999  
Livestock: 356-2090  
Livestock: 651-2000  
Livestock: 800-521-3719  
Livestock: 226-1929

Traverse City: 518-4111  
Livestock: 518-4111  
Livestock: 675-6606  
Livestock: 522-5599  
Livestock: 651-1999  
Livestock: 356-2090  
Livestock: 651-2000  
Livestock: 800-521-3719  
Livestock: 226-1929

Traverse City: 518-4111  
Livestock: 518-4111  
Livestock: 675-6606  
Livestock: 522-5599  
Livestock: 651-1999  
Livestock: 356-2090  
Livestock: 651-2000  
Livestock: 800-521-3719  
Livestock: 226-1929

Traverse City: 518-4111  
Livestock: 518-4111  
Livestock: 675-6606  
Livestock: 522-5599  
Livestock: 651-1999  
Livestock: 356-2090  
Livestock: 651-2000  
Livestock: 800-521-3719  
Livestock: 226-1929

Traverse City: 518-4111  
Livestock: 518-4111  
Livestock: 675-6606  
Livestock: 522-5599  
Livestock: 651-1999  
Livestock: 356-2090  
Livestock: 651-2000  
Livestock: 800-521-3719  
Livestock: 226-1929

Traverse City: 518-4111  
Livestock: 518-4111  
Livestock: 675-6606  
Livestock: 522-5599  
Livestock: