

1731 W. Maple Rd.  
Birmingham  
644-3500

# Hall & Hunter REALTORS

800 W. Long Lake Rd.  
Bloomfield Hills  
647-8100



### DEER CREEK VALUE

Handsome custom Tudor in Deer Creek. Two acres of marvelous landscaping. Generous sized bedrooms and six full baths plus two half baths. Exposed hardwood floors, imported fixtures, crown moldings and other fine features throughout. Finished walk-out lower level. Recently reduced.

\$798,000

(650517)

Call 644-3500



### OPEN SUNDAY 1-4

Originally built in 1840. Many updates and upgrades have prepared the home for today. Banquet sized dining room. Library. Formal living room with fireplace. Kitchen with eating space. Three car garage and much more. Stop in and see. 32806 Wing Lake Rd. West of Telegraph and South of 14 Mile Rd.

\$410,000

(602820)

Call 647-8100



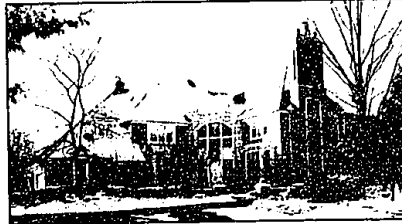
### BEAUTIFULLY DECORATED

Located in Bloomfield Hills and beautifully decorated. Four bedrooms, two full baths and one half bath. Large living room, family room and library. Finished walk-out lower level. Exposed hardwood floors, recessed lighting and other decorative touches. 3+ attached garage. Bloomfield schools.

\$289,900

(650984)

Call 647-8100



### MAJESTIC BEAUTY

Located in the city of Bloomfield Hills. Over 7,000 square feet of magnificent quality and detail. Four gracious bedrooms, four full and two half baths. A large music room. A finished walk-out lower level. In-ground pool, waterfall and gazebo in the rear yard.

\$2,200,000

(661467)

Call 647-8100



### BETTER THAN NEW

Over 4400 square feet of perfection. Master bedroom suite with separate shower and sunken tub. Four generous bedrooms and a separate back stairway to a bonus room ideal for private office or playroom. Three plus attached garage. A real masterpiece.

\$437,000

(604825)

Call 644-3500



### OPEN SUNDAY 1-4

One of a kind custom built ranch in Bloomfield Hills. Set on an elevated lot with over one acre of rolling terrain. Scenic views from every window. Formal living room with fireplace. Country kitchen with access to deck. Fully finished walk-out lower level. 6421 Laurel Court. North of 15 Mile Rd. and West of Lusher.

\$289,900

(607941)

Call 644-3500



### LOFTY SPACES

Spacious and open contemporary in LaPlaza Sub with Upper Strata Lake privileges and tennis courts nearby. Soaring ceilings in the great room with loft. Master suite with his and her baths. Finished lower level and plenty of space to enjoy year-round.

\$379,900

(550553)

Call 647-8100



### OPEN SUNDAY 1-4

Living room with fireplace, dining room and large kitchen with eating space. Three bedrooms on the second floor. First floor master w/2nd bedroom as library. Florida room and fenced yard. 18730 Sunnybrook, N. of 11 Mile, E. of Santa Barbara.

\$149,000

(607810)

Call 644-3500



### CONVENIENT BLOOMFIELD LOCATION

Beautifully appointed second floor unit with covered balcony accessed off living room. Easy distance to banking, shopping, restaurants and theater. Ample parking available. Association fee includes heat, air conditioning and water. Great hideaway, close-in.

\$74,900

(639020)

Call 647-8100



**WE KNOW SOMETHING  
YOU DON'T KNOW...**

**THE CURRENT MARKET  
VALUE OF YOUR HOUSE**

**HALL & HUNTER REALTORS  
KNOW ALL ASPECTS OF THE  
CONSTANTLY CHANGING REAL  
ESTATE MARKET THAT'S OUR  
BUSINESS. WHETHER YOU'RE  
PLANNING A MOVE OR SIMPLY  
DISCUSSING THE POSSIBILITIES,  
WE CAN HELP. OUR SALES  
REPRESENTATIVES WILL MAKE A  
REALISTIC CURRENT MARKET  
EVALUATION OF YOUR HOUSE  
WITHOUT OBLIGATION.**

**AREN'T YOU JUST A  
LITTLE BIT CURIOUS?**

**644-3500 • 647-8100**



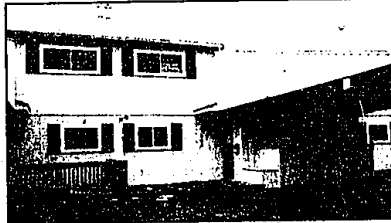
### NEWER AVAILABILITY IN TROY

Extensive upgrading includes decorator treatments. 3 bedrooms, 2 1/2 bathrooms. Features include new traditional fireplace facade and glass window wall in family room. Oak kitchen. Painted doors. Central air and 4 ceiling fans. Walk to Firefighters Park.

\$218,000

(608244)

Call 644-3500



### OPEN AND SPACIOUS

Spacious open floor plan with large living room and step saving kitchen. Downfall of living room to patio. Two generous sized bedrooms on the second floor with two walk-in closets. Covered carport and extra parking available. Conveniently located in Troy.

\$97,900

(608021)

Call 647-8100



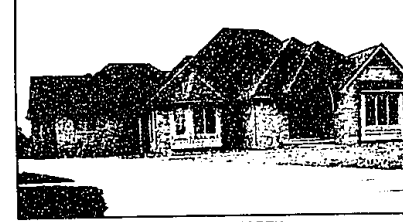
### OPEN SATURDAY 1-4 & SUNDAY 1-4

In the heart of Bloomfield Hills. Five bedrooms, two full and two half baths. Master bedroom with fireplace. Formal living room. Family room with fireplace and finished walk-out lower level. First floor laundry and much more. 607 Kingsley Trail. North of Long Lake Rd. and East of Kensington Rd.

\$319,000

(602490)

Call 647-8100



### SOMERSET NORTH

Open and spacious floor plan. Great room with fireplace. Three bedrooms, library and a large kitchen with eating space and a walk-in pantry. First floor laundry. Full basement. Within easy distance of Elementary School and Somerset shops.

\$304,900

(559097)

Call 644-3500



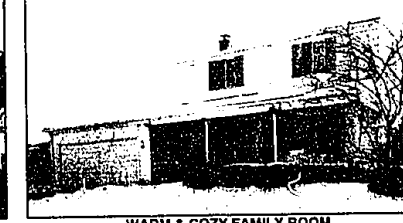
### EASY ACCESS TO BIRMINGHAM

Situated on a lovely tree lined street in Birmingham within easy distance of downtown. Refinished hardwood floors and freshly painted throughout. Master bedroom has a walk-in closet. Fenced rear garden. Quick possession.

\$159,900

(607459)

Call 644-3500



### WARM & COZY FAMILY ROOM

Family room with fireplace and downfall leading to fenced rear gardens. Three bedrooms, two and one half baths. Formal living room and dining room. Freshly painted and decorated throughout. Near schools, shopping and parks. Great value in Birmingham.

\$167,000

(601217)

Call 644-3500



CHRISTIE'S

Our Internet listing is <http://usa.aol.com/hallhunter>  
COMPETENCE, INTEGRITY AND PERSONALIZED ATTENTION



WILLIS WILSON  
LIVING REAL ESTATE

