

## Slades is the place to visit for wedding, anniversary gifts

Slades in Applegate Square on Northwestern has a reputation as one of the finest places to shop for gifts for the home. Besides showcasing fine china, dishes and silverware in hundreds of different lines, it also concentrates on accessories such as pottery, cookware and serving pieces and decorative accessories.

But, like many stores, it didn't start out that way. In fact, the store got its beginning 20 years ago in the Slade house in Franklin. "We owned this house as a rental," said Slades' owner, Judie Koploy. "I decided to open a shop in it." She opened with a very limited amount of inventory. Over time, she acquired better lines of china. "After 17 years, I finally got the Baccarat line," she said.

She moved the store to Applegate Square for more space. Since then, she's acquired more space in two stores as the occupants moved out. Slades now has 12 employees all of

whom strive to make the customer feel special.

"We have a bridal registry that so many customers use. People come from all over to shop at Slades because our bridal consultants are skilled and knowledgeable.

We sell gifts for babies, anniversaries, showers, weddings and sweet sixteen and bar mitzvahs. Our china, silverware, flatware and glassware patterns range from contemporary to traditional in all price ranges.

Any bride that registers at Slades receives as a gift one free place setting of china, glassware or flatware (with a guaranteed minimum purchase of 12).

Slades is open from 10 a.m. to 5 p.m., Mondays through Saturdays. Beginning in March, it will stay open until 8 p.m. on Thursdays.

"I'm always here to help customers," Koploy added. "My staff and I are dedicated to working for the customers' satisfaction."



Judie Koploy of Slades in Applegate Square with some of her finest crystal.

## ImaginKnit caters to yarn lovers

A bad back and boredom with her prior career led Denise Norber to open ImaginKnit in September, 1993 at Applegate Square on Northwestern Highway in Southfield. Since then, both the store and Norber have grown professionally.

"I did property management and accounting until I decided I was burned out," Norber explained. "I knew no one would hire me since I have a bad back and can't sit for long so I took my love of knitting and opened a store dedicated to that."

The result is an attractive location that serves as a magnet for people from all parts of Oakland and other counties. They come for the great selection of high quality yarns and accessories as well as knitting and crocheting classes.

"We get all levels of knitters" she said. After I opened ImaginKnit I found out how much I didn't know. I don't consider myself an expert. I have customers who can outknit me. But I certainly have expanded myself professionally."

Part of the fun of owning a store is

watching the clientele change. Some are content to select and follow a pattern. Others want help creating new patterns with their own designs and stylings. Still others like to choose the yarn and have one of Norber's employees knit the item for the customer.

Why has knitting continued to be popular? "It's relaxing, creative, and it keeps people out of the refrigerator," was Norber's response.

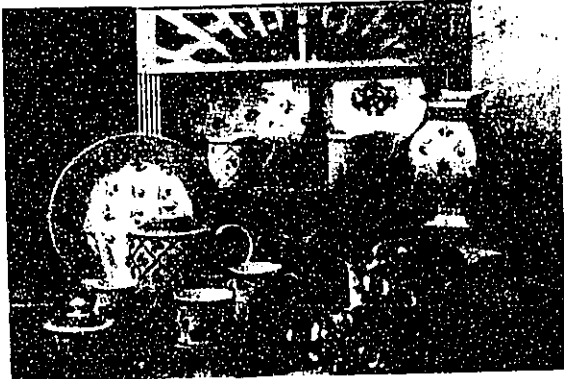
ImaginKnit is open 10 a.m. to 5 p.m. Mondays through Fridays and usually until 7 p.m. on Thursdays. It's open from 10 a.m. to 4 p.m. on Saturdays. Norber advises customers to call and make sure the store is open past 5 p.m. on Thursdays before coming over.



Denise Norber displays a large assortment of yarn.

### Villeroy & Boch

Please stop in to see our wonderful new china and crystal patterns



Provence Collection

## Slades

Applegate Square • 29721 Northwestern Hwy. • Southfield  
(810) 354-0066

## When We are Knitting All Is Right With The World.



**imaginKnit**  
Quality Yarns, Kits & More

NORTHWESTERN HIGHWAY • APPLGATE SQUARE • (810) 355-1400