

# RALPH MANUEL

ASSOCIATES • REALTORS



**ESTATE LIKE ENVIRONMENT!** Magnificent views from every window. Lakefront, canal to Cass Lake and 370' on Orchard Lake surround this Contemporary California deck house - must see! \$750,000. 851-6900. COE-613464



**JUST SPECTACULAR!** Contemporary home features two 1st floor bedrooms, plus 2 additional bedrooms on 2nd floor with loft overlooking great room and foyer. Many quality features throughout - must see! \$625,000. 851-6900 WAK-559339



**PRIDE OF OWNERSHIP SHOWS.** Expanded "cheery" kitchen, "skylighted" breakfast area, 3 bedrooms, 2 baths, large family room plus library and deck overlooks a beautiful lot. \$339,900. 647-7100



**BEAUTIFUL BLOOMFIELD LAKE HOME.** Many custom designed built-ins, gourmet kitchen, first floor master suite, extensive decking overlooks lake, finished walk-out, spacious. Bloomfield Hills schools. \$450,000. 647-7100 LOE554885



**INTOWN GATED ESTATE!** Ride your horse on this wooded estate with acreage and lower 4500 square foot home with 4 fireplaces, 2 story main and guest cottage & splendid retreat. Offered at \$750,000. 851-6900 HAD-604456



**NEW CONSTRUCTION IN Bradford of Novi!** 4 bedroom Colonial has a walk-out basement and backs to a wooded ravine. Two story foyer, family room with cathedral ceiling and more. \$390,000. 851-6900 WOR-613569



**INCREDIBLY SPACIOUS COLONIAL** in the city of Bloomfield Hills. Dramatic 2 story foyer with balcony, large family room with fireplace and cathedral ceiling, 3 car attached garage. \$699,500. 647-7100



**ROYAL OAK - Sharp 3 bedroom Colonial,** neutral decor, spacious rooms, 1 1/2 baths, 2 fireplaces, family room, rec room, 2 car garage. \$189,900. 647-7100



**OPEN SUNDAY 2-5**

**PRICED TO SELL FAST!** Spectacular custom Contemporary in an excellent neighborhood. Dramatic 2 story marble foyer, Euro-style kitchen, finished lower level. \$695,000. 851-6900. 1901 Sherwood Glen, N. of Lone Pine, W. of Inksler.



**SPECTACULAR CONTEMPORARY** open floor plan, 2 story foyer, bridge overlooking 2 story great room with fireplace, family room with custom built-in wall unit and bar, island kitchen and master suite with whirlpool. \$315,000. 851-6900 GLE-552630



**YOU'LL LOVE** this desirable Quarton Lake neighborhood. Enjoy entertaining in the generous living areas of this 3 bedroom ranch, over 2100 sq. ft., with formal dining, eat-in kitchen, library & more! \$249,900. 647-7100 FAY615464



**CHARMING CAPE** in wonderful location. 3-4 bedroom, 2 bath home features natural fireplace, formal dining room, family room, deck, beautifully landscaped yard. \$259,900. 647-7100 FAY612066



**OPEN SUNDAY 2-5**

**WEST BLOOMFIELD DREAM HOME!** Luxury abounds in this 3 bedroom, 2 1/2 bath Colonial. Master bath with separate shower PLUS his and hers California closets. \$289,900. 851-6900. 6722 High Ridge, S. of Commerce, W. of Green Lake



**NEW IN 1996!** Energy efficient interior, maintenance free exterior. 3 bedrooms, 2 baths, vaulted ceilings, deep basement, family room with fireplace, open floor plan and more! \$147,900. 851-6900 OAA-604136



**OPEN SUNDAY 2-5**

**TRANSFEREE PERFECT.** Not even one year old beautiful home on cul-de-sac in excellent neighborhood. Gourmet kitchen-Corbin counters, open floor plan with large dining room, great room, home features living room and library. Must be seen! \$399,900. 647-7100 ROT608191



**WESTCHESTER VILLAGE GEM!** 3 bedroom Ranch with half bath in master bedroom, fireplace in living room, well maintained home with eat-in kitchen, Merlot cabinets, storage, curb appeal! \$177,500. 647-7100 FAE611755



**CHARMING CLASSICAL PERIOD FARMHOUSE -** Renovated and located on 1.6 acres in Beverly Hills. 3 bedrooms, 2 1/2 baths, formal dining room, 3 porches, basement and fireplace. Very unique! \$249,000. 851-6900 KEY-613564



**RECENTLY UPGRADED** with crown molding, beautiful wallcovering and ceramic tiles in kitchen, foyer and bathrooms. Newer carpet, furnace, water heater and central air. West Bloomfield schools. \$149,900. 851-6900 FAY-568802



**ELEGANT SOUTH SHORES** without waiting to build, 6,000 sq. ft. of upgrades, marble, granite, hardwood, built-ins, vaulted ceilings, 1st floor master, gourmet kitchen, 3 bedroom suites, lake view, gated community on Pine Lake. \$1,950,000. 647-7100 SOE603355



**IMMACULATE TWO BEDROOM** two and a half bath, end unit condo in move-in condition, neutral decor, private courtyard. Shred the cares of owning a house - consider condo living! \$151,900. 647-7100 F0E608059



**DECORATORS DREAM HOME** in neutrals with ceramic entry. Relax by one of the two fireplaces in the great room or family room. Home is set back on a large treed yard in a convenient Bloomfield location. \$249,900. 851-6900 LHM-609492



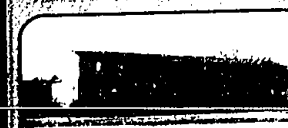
**DESIRABLE UPPER RANCH CONDO** in West Bloomfield. This 2 bedroom, plus den, unit has been sharply updated in neutrals and is situated in a desirable area within the complex. Offered at \$122,500. 851-6900 PER-609510



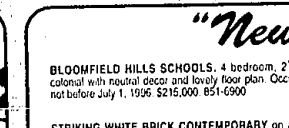
**NEWER BLOOMFIELD HILLS HOME** situated on premium wooded lot. Split contemporary with bleached wood floors, outstanding first floor master suite, gourmet kitchen, quality construction. Bloomfield schools. \$689,000. 647-7100 RAE-612800



**BRICK RANCH** well maintained in a convenient location, 3 bedrooms, hardwood floors, finished basement, central air, fenced yard, 2 car garage. \$149,900. 647-7100 WHDG12277



**POND SETTING!** Enjoy tranquil views while relaxing on the dock of this 2 bedroom Townhouse with full basement. Private entrance and 2 car attached garage. Offered at \$89,900. 851-6900 LOH-613283



**FARMINGTON HILLS!** Beautiful 4 bedroom, 2 1/2 bath brick Colonial in desirable Strathmore. Ceramic tile, recessed lights, French doors, vaulted ceiling, luxury master suite and more. Super home! \$395,000. 851-6900



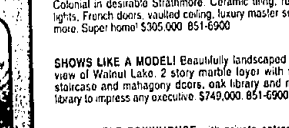
**IN-TOWN LIVING.** Charming, totally renovated 3 bedroom, 1 1/2 bath Colonial within minutes of downtown Birmingham. All white kitchen, updated baths, it's all been done. \$225,000. 647-7100



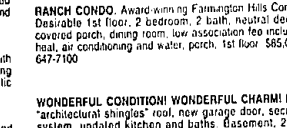
**BIRMINGHAM SCHOOLS - LAKE PRIVILEGES.** Updated with neutral decor, many built-ins and appliances included. Nicely landscaped with sprinklers. \$239,000. 647-7100 HA0610390



**ATTENTION CONDO BUYERS!** Farmington Hills 2 bedroom upper ranch Condo with newer cream carpeting, new almond kitchen, neutral decor, mirrors and over 1000 sq. ft. Great location! \$75,900. 851-6900 FON-613510



**SHOWS LIKE A MODEL!** Beautifully landscaped lot with view of Waterford Lake. 2 story marble foyer with winding staircase and mahogany doors, oak library and majestic library to impress any executive. \$749,000. 851-6900



**WONDERFUL CONDITION! WONDERFUL CHARM!** New "architectural shingles" roof, new garage door, security system, updated kitchen and baths. Basement, 2 car attached garage, 3 bedrooms, sun room and family room, double lot, slate patio. Too good to miss. \$179,700. 647-7100



**VALUE PLUS** in this Ranch home. 3 bedrooms, large closets, 2 baths, deck, garage, garage and basement. All this for \$130,000. 647-7100 DAS610502

## "New Listings"

**BLOOMFIELD HILLS SCHOOLS.** 4 bedroom, 2 1/2 bath colonial with neutral decor and lovely floor plan. Occupancy not before July 1, 1996. \$215,000. 851-6900

**STRIKING WHITE BRICK CONTEMPORARY** on a large professionally landscaped lot. Dramatic living room with cathedral ceiling, kitchen opens to family room, 700 sq. ft. deck and finished lower level. \$289,000. 851-6900

**FARMINGTON HILLS!** Beautiful 4 bedroom, 2 1/2 bath brick Colonial in desirable Strathmore. Ceramic tile, recessed lights, French doors, vaulted ceiling, luxury master suite and more. Super home! \$395,000. 851-6900

**SHOWS LIKE A MODEL!** Beautifully landscaped lot with view of Waterford Lake. 2 story marble foyer with winding staircase and mahogany doors, oak library and majestic library to impress any executive. \$749,000. 851-6900

**SOUTHFIELD TOWNHOUSE** with private entrance and abundant open treed space for privacy and enjoyment. Individual carpets plus ample extra parking. Two large bedrooms with extra closet and storage room. \$69,800. 851-6900

**PRIVATE POND SETTING!** Enjoy the serene views from the wood deck on this lovely 2 bedroom, 2 bath Waterford townhouse. Private entrance, 2 car attached garage and walk-out lower level. \$32,900. 851-6900

**IN-TOWN LIVING.** Charming, totally renovated 3 bedroom, 1 1/2 bath Colonial within minutes of downtown Birmingham. All white kitchen, updated baths, it's all been done. \$225,000. 647-7100

**RANCH CONDO.** Award-winning Farmington Hills Condo. Desirable 1st floor, 2 bedroom, 2 bath, neutral decor, covered porch, dining room, low association fee includes heat, air conditioning and water, porch, 1st floor. \$85,000. 647-7100

**WONDERFUL CONDITION! WONDERFUL CHARM!** New "architectural shingles" roof, new garage door, security system, updated kitchen and baths. Basement, 2 car attached garage, 3 bedrooms, sun room and family room, double lot, slate patio. Too good to miss. \$179,700. 647-7100

**647-7100**  
1821 W Maple  
Birmingham  
Bloomfield

**851-6900**  
32961 Middlebell  
Farmington Hills  
West Bloomfield

**40 HOUR LICENSING COURSE**  
includes all materials  
**\$150.00**  
CALL GINA - 810/356-7111

**1-800-R-MANUEL**  
RELOCATION  
TOLL-FREE

