

Suburban Observer & Eccentric Automotive Showcase

Published Every Monday (*) (O) 10

MONDAY, APRIL 29, 1996 O&E



Durable, fun-to-drive Jimmy is no sport brute

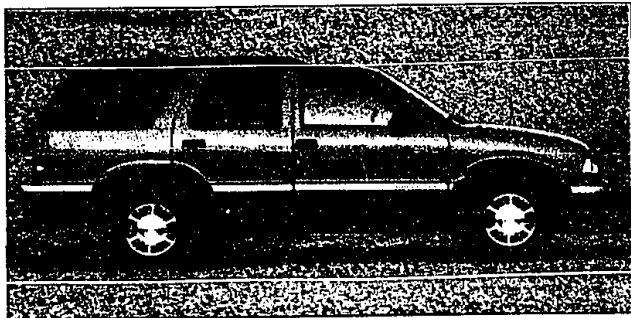
By Anne Fracassa
Avanti News/Features

When you look at sport utility vehicles, you generally think big. Here's a smaller sport ute that can easily fit the person who has an active lifestyle and needs a fun-to-drive multi-purpose vehicle.

The 1996 GMC Jimmy, kinsin' cousin to the Chevrolet Blazer, looks small on the outside, but is really a lot larger than you'd imagine. It's roomy even for the larger person. The best part is that it combines a high level of comfort and convenience features with a solid ride usually found in the larger luxury breed that high-priced sport utilities.

The Jimmy tested was a 4-door all-wheel-drive model outfitted with the new Vortec 4300 engine. This 4.3-liter V6 has been around for awhile in the Jimmy and Blazer, but it's been heavily tinkered with this year.

The fuel injection system has been upgraded. The intake manifold is half cast aluminum and half composite material, which cut weight and improved insulation of the intake air. Other improve-



ments include a stiffer cylinder



ROAD TEST
By
Anne Fracassa

block, a cast-aluminum oil pan, long-life coolant, low-distance spark-plug wires, platinum-tipped spark plugs and a new starter motor that's smaller, lighter and more durable.

Sorry to get technical, but all that translates into a stronger, more reliable and more durable engine that measures up to a truck you can count on years down the road.

It's not uncommon to see people hold on to their vehicles for more

than eight years. Car manufacturers are taking steps to allow you to keep them even longer.

As with all 1996 vehicles, the Jimmy is in full compliance with federal law and has OBD II—second generation on-board diagnostics. OBD II, simply, is a new-fangled (yet sophisticated) way for your car or truck to tell you if something just isn't right.

OBD II constantly monitors fuel delivery and the evaporative storage system, catalytic converter, oxygen sensors, exhaust gas recirculation valve, manifold air temperature sensor, crankshaft position sensor, air pump and ignition system. If any of those systems malfunction in any way, a "SERVICE ENGINE SOON" warning light illuminates on your instrument panel.

For example, if your oxygen sensor loses function, the light will go on. Before, there was no way to tell it wasn't working right. Untreated, your car would suffer premature wear on the catalytic

converter. Ultimately, you would have to replace the converter, costing you a lot of money.

With all 1996 vehicles, all you do is take your vehicle to the dealer and a service technician, through computer diagnostics attached to your vehicle, will know exactly what's wrong without ever removing a part.

What that means for you and me is that the new 1996 vehicles have the lowest emissions ever, the car will last even longer than before and you'll have quicker first-time and lower cost on repairs of your engine-related problems. We all win.

Back to the Jimmy.

There are four models to choose from: The SL, SLI, SLT and SLT, in both 2-door and 4-door, ranging in price from \$19,573 to \$23,504. A 4-speed electronic automatic transmission with overdrive is standard on all Jimmy 2-door this year. Optional on the Jimmy 2-door is a 6-speed manual with overdrive.

The Jimmy is also available in

four suspension packages. The "smooth-ride" suspension is suited to paved and improved roads, has a good cargo capacity and gives a smooth ride. The "Euro-ride" suspension is for paved and improved roads, has good cargo capacity and provides a touring or sporty ride.

The "off-road" suspension has traction control, is for rough and unimproved off-roading and has a firm ride. And the "Highlander" suspension has all that and is used primarily for recreational purposes. All suspensions allow for heavy-duty trailering. All are available on the 2-door Jimmy.

On the 4-door Jimmy, you can choose from smooth-ride, Euro-ride or luxury-ride suspensions. The luxury ride is for paved roads, provides good cargo capacity, allows heavy trailering and has a premium ride.

The Jimmy is comfortable and easy to get into and out of. Instrumentation is smartly arranged and easy to operate. Daytime running lights and dual air bags are standard on all Jimmys, as is brake/transmission shift interlock (you have to apply the brake to shift from park).

This is a solid vehicle for anyone interested in an upscale, sporty truck that's a pleasure to drive. It's versatile for anyone with an active life-style and it's functional for anyone from an at-home mom to a guy who likes a small, comfortable multi-purpose vehicle for work. For 20 grand, it's

a bargain as well.

1996 GMC Jimmy
Vehicle class:
Compact sport utility vehicle.
Engine:
4.3 liter V6 (Vortec 4300).
Mileage:
17 mpg city / 22 mpg highway.
Where built:
Moraine, Ohio, and Linden, N.J.
Base price:
\$19,573.

How Many Fluids?

(CCC) - How many fluids can be checked on a typical car? Four? Six? Ten? If you guessed ten, you're right. They're found in the:

1. Engine
2. Transmission
3. Braking System
4. Battery
5. Windshield Washers
6. Power Steering
7. Cooling System (antifreeze)
8. CV Joints/Rear Axle
9. Gas Tank
10. Air Conditioner

If you'd like to see a particular model tested or if you have a car question, send Anne Fracassa a message at AVANTI 1054, Avanti's America Online mailbox... Or comment through the Internet at AVANTI1054@aol.com

Anne Fracassa is senior editor of Avanti News Features.

Red Holman PONTIAC GMC TRUCK SPRINGTIME DISCOUNTS

IMMEDIATE DELIVERY FROM STOCK ONLY!
ALL NEW '96 SUNFIRE 2 DOOR COUPE

- Automatic
- Gauges & Tach
- Air Conditioning
- Tinted Glass
- Bucket Seats
- AM/FM Cassette
- Custom Wheels Covers
- Console
- Power Steering

RED'S PRICE \$12,795*

Dual Air Bags Anti-lock Brakes

- Power Brakes
- Sport Mirrors
- Spoiler
- Body Side Moldings
- Rear Deflector

GM OPTION II \$12,129*

ALL NEW 1996 GRAND AM COUPE

Dual Air Bags Anti-lock Brakes

- Automatic
- Air Conditioning
- Cassette
- 2.4 Twin Cam Engine
- Stereo Cassette
- Tinted Glass
- Sport Mirrors
- Body Side Moldings
- Custom Covers
- Gauges & Tach

LEASE WITH \$0 DOWN!

RED'S PRICE \$239.99 36 Mo.**

GM OPTION II \$216.71 36 Mo.**

GMC TRUCK
1996 SIERRA

350 V-8 automatic, aluminum wheels, electric mirrors, SLE decor, air conditioning, stereo cassette. Stock #6178T

List \$21,413
SALE PRICE \$18,595*

GM Employees subtract additional \$1039.90 or can be applied toward lease

Lease For \$278.46 36 Mo.**

1996 JIMMY 4 DOOR

V-6, automatic, SLE trim, electronic shift, air conditioning, heavy duty trailer package, many extras. Stock #5328T

List \$27,509
SALE PRICE \$24,995*

GM Employees subtract additional \$1350.95 or can be applied toward lease

Lease For \$324.98 36 Mo.**

1996 SUBURBAN 3/4 TON

4 wheel drive, SLE, keyless entry, 454V8, auto, power windows and locks, running boards, front and rear air, 5 passenger, stereo cassette & more. Stock #6122T

List \$36,092
SALE PRICE \$31,995*

GM Employees subtract additional \$1771.65 or can be applied toward lease

Lease For \$465.75 36 Mo.**

ALL NEW '96 FIREBIRD

Dual Air Bags Anti-lock Brakes

- Power Steering
- Stereo Cassette
- Delagator
- Anti-theft system
- Power Brakes
- Body Side Moldings
- Body Side Spoiler
- 4-Door
- 4-Door Price \$18,157

RED'S PRICE \$16,620*

GM OPTION II \$15,737*

Lease \$0 Down \$289.99** 36 Mo. \$264.14** 36 Mo.

PONTIAC Cares

INCLUDED WITH ALL PONTIACS

- 3-Year "No Deductible" Warranty
- Courtesy Transportation
- 24-Hour Roadside Assistance

CLIP ANY TRI-COUNTY PONTIAC AD • IT'S GOOD AT RED'S

NEW '96 GRAND PRIX SE COUPE

Dual Air Bags

3.1 V-6, 4 speed automatic, air, power steering & brakes, tinted glass, fog lamps, aluminum wheels, spoiler, AM/FM stereo cassette (with steering wheel controls), cruise, remote trunk, delagator, power windows & locks, tachometer, mats & more.

RED'S PRICE \$17,495*

GM OPTION II \$16,568*

CARS		RED HOLMAN'S SELECT USED VEHICLES					TRUCKS		
'95 TRANS AM CONVERTIBLE Blue, 6 speed, leather. Must See	'95 LUMINA Z34 Charcoal Gray, 33,000 miles, spotless. \$13,800	'95 BONNEVILLE SLE White-Gray leather. \$18,695	'94 SUMMIR 2 Door, White, air, auto, 12,900 miles. Like new! Like New	'92-'94 GRAND PRIX 34U Editions - 6 to choose Save	'95 SIERRA CLUB 442 Red, 2-door, 6400 miles. "GM Special Purchase"	'94 CHEVY 2-10 CLUB 4.3 V-6, air, Alloy. \$10,995	'94 SUBURBAN 4x4 SLE, dual air, 38,000 miles. Reduced! \$25,200	'93 SIERRA 4X4 4X4, 2-door, just over 100k miles. \$15,395	'94 SONOMA CLUB SLE Black, 30,000 miles, air, auto & more \$13,795
'94 OLDS CUTLASS 4 Door, White, 35,000 miles, leather. \$14,500	'93 CAMRY LE Gold, power options, 34,000 miles. \$13,995	'94 GRAND AM 4-DOOR 2 door, 32,000 miles. One owner. \$11,995	'92 BONNEVILLE SLE Burgundy roof, leather, low miles. \$13,995	'74 CHEVY LAQUANA 6-3 464 Big block, 29,000 actual miles! \$25,500	'88 YUKON QY Emerald Green, 18,000 miles. \$15,500	'95 SIERRA CLUB 442 V8, air, auto, 18,000 miles. \$15,500	'94 CHEVY 6-10 4X4 HIGH RIDER 4.3 V6, auto, Black. \$15,595	SUBURBAN SLE Burgundy/Silver, loaded, H.D. Trailer, priced from: \$23,900	'92-'93 TRACKER CONVERTIBLE Bright Blue or Raspberry, priced from: \$5895

SALES: Mon. & Thurs. 8-9, Tues., Wed., Fri. 8-6 • SERVICE: Mon. & Thurs. 7-9, Tues., Wed., Fri. 7-6

FORD ROAD AT WAYNE ROAD, WESTLAND

Red Holman

PONTIAC GMC TRUCK

721-1144

GM

MON T MAK' THE \$100 MISTAKE