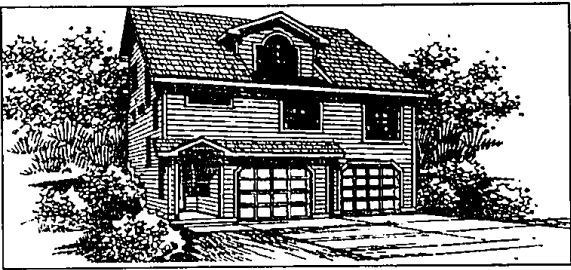


The Julius 2:
This small but well designed house offers easy access from garage to house and other special features. See plan below.



Julius 2 is simple, elegant

The Julius 2 may be entered through the recessed gabled entry, protecting you from inclement weather. The garage entrance is located within the entry for easy access.

Kitchen amenities include a dishwasher, large walk-in pantry, range and oven. Tucked in behind the kitchen is a utility room with space for a washer and dryer. The eating connects the kitchen to the nook and dining room, for easy access by the cook of the house.

Elegant in its simplicity, the living room is adorned with two large windows for enjoying nature. It is sure to be a gathering place for the family.

The private master suite is large, with plenty of windows to enjoy the morning sun or an evening sunset. Its amenities include a large walk-in closet, a private bath with linen storage and a shower.

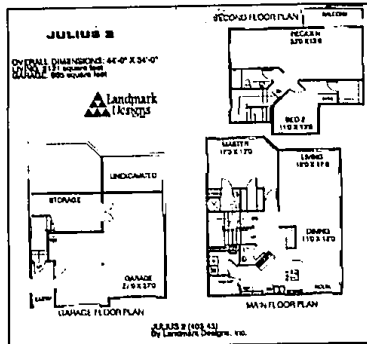
The second floor recreation/den is spacious and made for relaxing after a long day at work or school. This enormous room has enough space for a pool table or Ping-Pong table, a big screen television and a couple of couches. For outdoor entertainment, the deck is accessible from the recreation/den through sliding glass doors.

Completing the floor plan on this level is a bedroom with vaulted ceiling, a large walk-in closet and a built-in

desk. The bedroom shares a bathroom with the recreation den.

The garage has a large storage area in one corner. There is room for plenty of storage. The odd jobber of the house will have plenty of space for working on hobbies or fix-it projects.

For a study kit of the Julius 2 (403-43), send \$10 to Landmark Designs, P.O. Box 2307-0E48, Eugene, OR 97402. (Be sure to specify plan name and number).



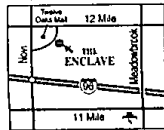
GRAND OPENING! \$10,000 BONUS UPGRADE ALLOWANCE

WATERFRONT LIVING IN NOVI!

2,200 Sq. Ft.
TWO BEDROOM
TWO BATH
CONDOMINIUMS
PRICED FROM
\$189,900



- Secure Mid-Rise Buildings Surrounded By Sweeping Lawns and Tranquil Lakes
- Magnificent Formal Rooms, Cozy Den, Year-Round Sunroom
- 24-Hour Gatehouse, Indoor Pool, Spa and Workout Center
- Novi's Best Location, Adjacent To Twelve Oaks Mall, Close To Everything



Access To Twelve Oaks Mall
Main One Day Near to Park
(Close To Bus)
(810) 348-8866

The Carman Group

Value never looked so good.

Exceptional Design

Exceptional Features

Exceptional Value

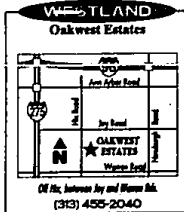
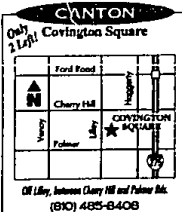
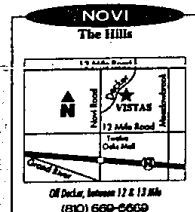


Award winning 3 and 4-bedroom two story and ranch homes. Unlike most builders, features that should be standard really are at Heritage Residential—



woodburning fireplace, complete lighting package, name brand floor coverings, volume ceilings, spacious kitchens, full basements, low maintenance exterior with brick on four sides, and premium detailed elevations—all at no extra cost!

From design and construction through sales and customer service, our team of professionals focus on value throughout the home building process.



Residents always welcome. Call 810-855-4636 for information on other fine Heritage Residential communities.

A traditional, old world atmosphere featuring gently rolling terrain, acres & acres of nature preserves, mature trees, and winding streets. These are a few answers to why you and your family should select Bloomfield Pines.

This private, natural setting is tucked away in a secluded area of West Bloomfield, yet surprisingly close to parks, shopping, expressways, beautiful lakes and recreational areas.



WHY BLOOMFIELD PINES?

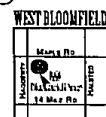
Homes From the \$440's

CALL FOR MORE INFORMATION
(810) 926-1965

Hours 12-6 p.m. daily,
(closed Thurs.)

Visit Bloomfield Pines, a refined community of 3,500 to 5,000 square foot homes featuring: walkout lower levels with fabulous wooded views, wonderful dual stairways and gourmet kitchens.

We offer unique colonial and first floor master suite plans and encourage our homeowners to customize the home of their dreams.



Located on Maple Rd. east of Haggerty in West Bloomfield.

SOUTH BAY SHORES
LAKEFRONT LIVING

VIEWS SO GOOD
YOU WON'T WANT CURTAINS.

A DISTINCTIVE LAKEFRONT COMMUNITY

- LOCATED ON BEAUTIFUL DUCK LAKE
- IN THE HEART OF OAKLAND COUNTY
- LARGE HOME SITES ON 1200 FT. OF LAKE FRONTAGE
- BUILT ON 1/2 ACRE LOTS
- LAKE FRONTAGE LOTS FROM \$125,000
- LAKEFRONT LOTS FROM \$145,000
- HOMES FROM 2,000 SQ. FT. INCLUDING LOT
- VISIT OUR MODEL 12, 13, 14, 15, 16, 17, 18, 19, 20, 21, 22, 23, 24, 25, 26, 27, 28, 29, 30, 31, 32, 33, 34, 35, 36, 37, 38, 39, 40, 41, 42, 43, 44, 45, 46, 47, 48, 49, 50, 51, 52, 53, 54, 55, 56, 57, 58, 59, 60, 61, 62, 63, 64, 65, 66, 67, 68, 69, 70, 71, 72, 73, 74, 75, 76, 77, 78, 79, 80, 81, 82, 83, 84, 85, 86, 87, 88, 89, 90, 91, 92, 93, 94, 95, 96, 97, 98, 99, 100

(810) 887-3009

ON WARDLOW RD., BETWEEN DUCK LAKE RD.
& HARVEY LAKE RD., NORTH OF R-55