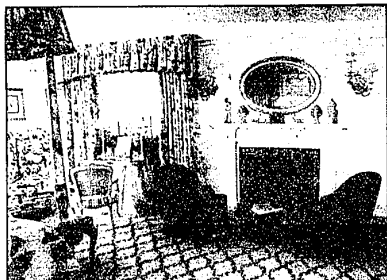


COVER STORY



Bedroom in bloom: The master bedroom in the Junior League of Detroit Designers Show House by Perlmutter-Freiwald of Franklin is full of colorful blooms.



Carriage house: Scott Shuptrine of Troy gave a touch of the '40s to the living room in the carriage house.



To the manor: Paint treatment in the "Lady of the Manor's Office" by Sharon A. Holton Interiors of Plymouth gives the walls the look of stone.

DESIGNERS TONE UP SHOW HOUSE

BY MARY KLEZGIC
AT HOME EDITOR

Being neutral could mean not taking or advocating any particular course of action.

In the case of the Junior League of Detroit Designers Show House, being neutral means going all out for style.

Some of the 34 area designers who put their talents on display at the show house, 340 Lakeland in Grrosse Pointe, opted for such neutral colors as taupe and oatmeal when decorating their rooms. The results are still grabbers, as welcoming and uplifting as the areas done in bright tones.

See for yourself by visiting the show house now to May 25. Hours are 11 a.m. to 4 p.m. Saturday-Tuesday, 11 a.m. to 8 p.m. Wednesday-Friday.

Meet the Designers Day is every Wednesday. Tickets, available at the door, are \$15. A gourmet cafe, a grocery with unusual garden accessories and plants, and a raffle are featured, and on the third floor art works by Center for Creative Studies and Cass Tech students are displayed. Call (313) 881-0040.

Statements

The grand foyer by DMJ Interiors Inc. of Rochester is gracious as well as grand; the upper level shows romantic scrolling in the doorway molding on the floor and the railing across the top, the colors are whispery soft.

The master sitting room on the second floor, designed by Rick Carmody of Au Courant of Royal Oak, makes you feel at home among the tree branches visible from the windows. The room fea-

tures birch bark wallpaper, black wooden floors and a woven mat. Birdhouses are accents, as are buttons - big buttons in a glass table, and a fish covered with buttons.

With white and off-white Linda Golden made a colorful statement in her design for a bath and closet, which she coordinated with the room by Carmody. Golden, of Socially Yours Design of Bloomfield Hills, worked with artist Linda Soberman. Soberman created an interactive art installation called "The Shoe Project" for the room. The motif of the room is women's shoes. They are everywhere, actual and artistic, three-dimensional and photo - mostly white ones, but a sparkling ruby pair can be seen - and quotes about shoes travel over doorways and across shelves. Tiny white plastic shoes line a frame.

The "youth bathroom" by Prior-Evans of Birmingham suggests a little castle, with such touches as the commode resembling a throne and the bathtub moat.

Colorful

Sharon A. Holton Interiors of Plymouth designed the "Lady of the Manor's Office" on the second floor. This sitting room features plaid drapes under a floral valance; a floral area rug is over a woven floor covering. Topping the valance is a thick red tipped by large glass cubes that echo the crystal light in the center of the ceiling. The dark green chair in the corner gets light from the windows on one side and the floor lamp on the other. Furniture, including a table and cabinet, bears dark, rich birch wood, some with gold trim. Taffeta fabric lines the closet. A paint treatment makes the walls resemble stone.



Shoe and tell: Linda Golden of Socially Yours Design in Bloomfield Hills worked with artist Linda Soberman, who created an installation with a motif of women's shoes.

The ceiling and trim are white.

In the "small living room," Keenan & York of Birmingham placed small antique fireplace chairs and a large painting. A paper fiber woven rug rests on the bleached wood floor. Joseph Keenan designed and hand screened the wallpaper.

Red, white and blue make a warm showing in the living room by Hudson's Interior Design Studios of Southfield. A blue and white area rug covers some of the wooden floor. The furniture is red, or black and white spotted. Cream drapes are pulled back and resemble soft columns, letting light from the

windows pour in. Also in the spacious room, the ceiling is cream, accessories are blue and white, and the interiors of the shelves are red.

Outside this room is the loggia by Gregg Petty Interiors of Bloomfield Hills. The loggia contains sculpture done specifically for it, and can be divided into sections like rooms or left open.

Scott Shuptrine of Troy added a touch of the '40s to the living room and bath in the carriage house. The living room displays a lively assortment of patterns in the gold-colored hue in the walls and ceiling and two area rugs.

Imagine this

The master bedroom by Perlmutter-Freiwald Inc. of Franklin is like a giant bouquet, with large, colorful blooms in the canopy, curtains and armchair, a floral pattern in the carpeting and painted on the bedposts, and a gentle design of flowers in the yellow wallpaper. Framed illustrations of flowers line the walls. Dark green chairs face each other at the fireplace, with a matching footstool between them.

La Belle Province of Birmingham calls the bedroom it designed "A Child's View of the World from the Treehouse." A giant globe was painted in the room, with the top of the world on the ceiling and the bright continents arranged around the walls over vibrant stripes. Zebras painted on one wall appear to be charging out of Africa in clouds of dust, and a giant stuffed toy giraffe greets visitors. The bedposts are covered in woven material, and woven baskets instead of drawers line a cabinet. Georgia & Associates of Birmingham mixed a taupe and gold leaf in elegant effect in the butter's pantry. Painted fresh hand circles echo the circles on

the chair backs. Gold silverware pieces adorn a curtain. A boldly painted message across the perimeter of the room urges visitors to EAT, DRINK, BE MERRY.

Next to the pantry is the kitchen by Joie de Vie of Birmingham. The room features a pine hutch, tile on part of the walls, blue wallpaper

and fabrics, and a glass-topped table with a base painted to resemble terra cotta. The rug gives a splash of color to the cool country tones.

Other participating designers include Brian Killian & Co., Charles Oliver Interiors, P.D.C. Design and Sara Scott Cullen Designs, all of Birmingham.

The house was built in 1928 and measures 9,400 square feet. It features eight bedrooms, nine fireplaces and nine bathrooms. The two-bedroom carriage house measures 700 square feet.

Proceeds from the 1996 Designers' Show House will benefit the programs and projects of the Junior League of Detroit, including the Junior League of Detroit/Palmer Athletic League Tutorial Project.



Red, white and blue: The living room by Hudson's Interior Design of Southfield features cream drapes that look like columns, and red and blue furniture and accessories.



On the cover: La Belle Province of Birmingham featured a giant globe in the Junior League of Detroit Designers Show House bedroom it designed. Staff photo by Dan Dean.