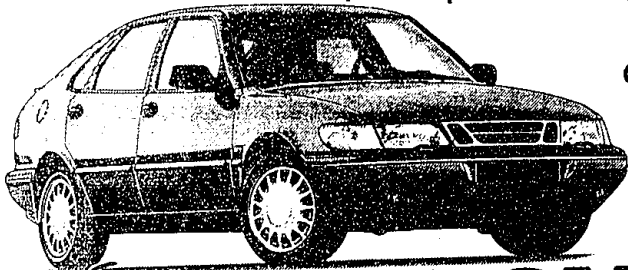


Even though  
Consumers Digest  
named it a



"Best Buy,"\* you may find it an  
even better lease.



find your own road.™

**SAAB**

Lease a  
SAAB 900 S  
**\$299** PER MO.\*\*  
36 mos., \$999 down payment

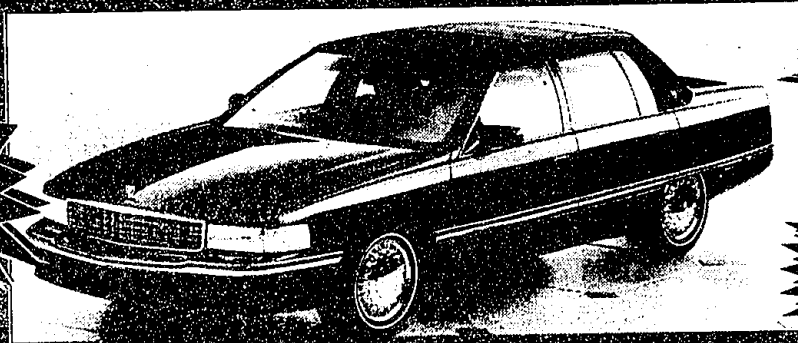
**SAAB**  
OF TROY

1815 Maplelawn Drive  
**(810) 643-6900**

\*Based on closed end lease w/approved credit 36 mo. with 10,000 miles per year with 15¢ per mile over. Lessee responsible for excess wear & tear. 1st month payment. \$325 ref., sec. dep., plus acq. fee, lic., & title. Fees due at inception plus 6% tax to get total amount amount multiply payment + tax x term. Lessee has option, but is not obligated to purchase at price determined at inception. Offer expires 7/2/96.

# Don Massey Cadillac's SPECIAL EDITION DEVILLE SALE

OVER  
100  
EDITION'S  
IN  
STOCK



SALES  
OFFER  
ON  
SPECIAL  
EDITION  
DEVILLE  
SALE  
SEE  
YOUR  
SALES  
PERSON  
FOR  
DETAILS

This will be the **BEST**  
Deal of the year!

**\$469**

\$2819 due at lease signing (first month's lease payment of \$469, plus \$475 refundable security deposit, plus down payment). Taxes, license, title fees, and insurance extra. GMAC most approve lease. Example based on 1990 DeVille. \$38,225 MSRP, including destination charge. Total of monthly payments is \$11,256. Option to buy at lease end at price determined at lease signing. Mileage charge of 15¢ per mile over 25,000 miles. Lessee pays for excessive wear. You must take retail delivery out of dealer stock by 8/30/96. This is a special GMAC program. See your participating dealer for qualification details.



*Don Massey Cadillac*

40475 ANN ARBOR RD. • PLYMOUTH  
(313) 453-7500 or (313) 933-2000

**OPEN MON.-THURS. UNTIL 9:00 P.M. SAT. 10:00-4:00**

N	1-896
T	1-98
	ANN ARBOR ROAD
	1-94

AT-1-275 • EXIT 28