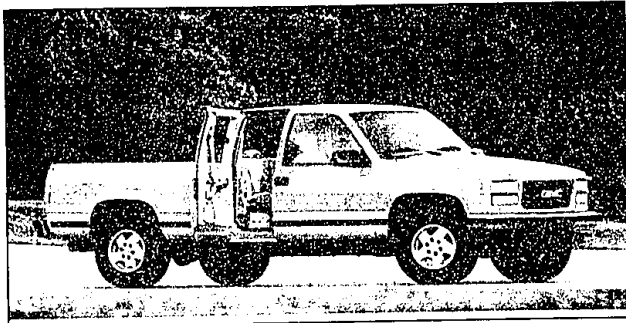


MONDAY, JUNE 17, 1996 *O&E*

Published Every Monday (0)1E

By Anne Fracassa  
Ayanti NewsFeatures

And what those doors open wide for is comfortable, plush seating and competing, as well as more-than-adequate bench seats that can accommodate three large adults in front — and in back. Leg room in the rear seats could



ROAD  
TEST  
By  
Anne  
Fracassa

Sierra Club Coupe outfitted with the famed GM Insta-trac and the Vortec 5000 V8 sequential fuel injected engine with 55 more horses than last year's model. Reigning in those 230 horses is easy, as acceleration and merging onto freeway ramps is done without effort.

The standard engine for the Sierra

control and windshield wipers are on the turning stalk. The AM/FM stereo/cassette/CD is up high on the dash so you're taking your eyes off the road for only a second. There are two auxiliary power plugs located in the middle

Of course, there are plenty of safety features on the Sierra, including daytime running lamps, illuminated entrance air bags, B-pillar-mounted height-adjustable shoulder belts, shoulder belts for the rear passengers and a

With all that, it's obvious the Sierra is a solid full-size pickup truck that's solid on features and bullish on price. It's a good buy for anybody who needs to haul people or cargo comfortably.

Base price: \$20,290

More tips on protecting your car's interior are in a free pamphlet, 'HOW TO KEEP YOUR CAR LOOKING YOUNG', published by the Car Care Council. Send a stamped, self addressed envelope to the Car Care Council, Dept. N, One Grade Lake Drive, Port Clinton, O 43452.

*If you'd like to see a particular model tested or if you have a car question, send Anne Fracassa a message at AVANTI1054, Avanti's America Online mailbox...Or comment through the Internet at AVANTI1054@aol.com*

# TAMAROFF

★ **QUALITY USED CARS & TRUCKS**

**SPECIAL OF THE WEEK**

## BRAND NEW 1996 LESABRE

Automatic transmission, new 3800 Series II V6, ABS brakes, tilt, cruise, AM/FM cassette, dual air bags, power windows, power locks, air conditioning & much more. Stock #446057.

**MSRP \$22,390**

### SALE PRICE \$18,995

### BUICK

CM EMPLOYEES SALES HEADQUARTERS

**Your Means Just Caught Up With Your Dreams!**

**1996 BUICK LESABRE**

Automatic transmission, new 3800 Series II V6, ABS brakes, tilt, cruise, AM/FM cassette, dual air bags, power windows, power locks, air conditioning & much more. Stock #446057.

**SALE PRICE \$18,995**

**1996 BUICK LESABRE**

Automatic transmission, new 3800 Series II V6, ABS brakes, tilt, cruise, AM/FM cassette, dual air bags, power windows, power locks, air conditioning & much more. Stock #446057.

**SALE PRICE \$18,995**

### HONDA

THE TAMAROFF ADVANTAGE!

**1996 HONDA ACCORD**

Automatic transmission, new 2.0L I4 engine, ABS brakes, tilt, cruise, AM/FM cassette, dual air bags, power windows, power locks, air conditioning & much more. Stock #446057.

**SALE PRICE \$14,995**

**1996 HONDA ACCORD**

Automatic transmission, new 2.0L I4 engine, ABS brakes, tilt, cruise, AM/FM cassette, dual air bags, power windows, power locks, air conditioning & much more. Stock #446057.

**SALE PRICE \$14,995**

### NISSAN

THE TAMAROFF ADVANTAGE!

**1996 NISSAN SENTRA**

Automatic transmission, new 2.0L I4 engine, ABS brakes, tilt, cruise, AM/FM cassette, dual air bags, power windows, power locks, air conditioning & much more. Stock #446057.

**SALE PRICE \$14,995**

**1996 NISSAN SENTRA**

Automatic transmission, new 2.0L I4 engine, ABS brakes, tilt, cruise, AM/FM cassette, dual air bags, power windows, power locks, air conditioning & much more. Stock #446057.

**SALE PRICE \$14,995**

### DODGE

**SIGN & GO LEASES**

NO MONEY DOWN NO FIRST PAYMENT NO SECURITY DEPOSIT

NO ACQUISITION NO DESTINATION FEE NO DOC FEE

**NEW 1996 DODGE NEON 2 DOOR**

Automatic transmission, new 2.0L I4 engine, ABS brakes, tilt, cruise, AM/FM cassette, dual air bags, power windows, power locks, air conditioning & much more. Stock #446057.

**SALE PRICE \$10,995**

**NEW 1996 DODGE STRATUS 4 DOOR**

Automatic transmission, new 2.0L I4 engine, ABS brakes, tilt, cruise, AM/FM cassette, dual air bags, power windows, power locks, air conditioning & much more. Stock #446057.

**SALE PRICE \$13,995**

### ISUZU

THE TAMAROFF ADVANTAGE!

**1996 ISUZU RODEO**

Automatic transmission, new 2.8L V6 engine, ABS brakes, tilt, cruise, AM/FM cassette, dual air bags, power windows, power locks, air conditioning & much more. Stock #446057.

**SALE PRICE \$14,995**

**1996 ISUZU RODEO**

Automatic transmission, new 2.8L V6 engine, ABS brakes, tilt, cruise, AM/FM cassette, dual air bags, power windows, power locks, air conditioning & much more. Stock #446057.

**SALE PRICE \$14,995**

### CHRYSLER

THE TAMAROFF ADVANTAGE!

**1996 CHRYSLER PT CRUISER**

Automatic transmission, new 2.0L I4 engine, ABS brakes, tilt, cruise, AM/FM cassette, dual air bags, power windows, power locks, air conditioning & much more. Stock #446057.

**SALE PRICE \$14,995**

**1996 CHRYSLER PT CRUISER**

Automatic transmission, new 2.0L I4 engine, ABS brakes, tilt, cruise, AM/FM cassette, dual air bags, power windows, power locks, air conditioning & much more. Stock #446057.

**SALE PRICE \$14,995**

### DODGE

THE TAMAROFF ADVANTAGE!

**NEW 1996 DODGE DAKOTA SUPER SLT CUB CAB**

Automatic transmission, new 2.5L I4 engine, ABS brakes, tilt, cruise, AM/FM cassette, dual air bags, power windows, power locks, air conditioning & much more. Stock #446057.

**SALE PRICE \$14,995**

**NEW 1996 DODGE DAKOTA SUPER SLT CUB CAB**

Automatic transmission, new 2.5L I4 engine, ABS brakes, tilt, cruise, AM/FM cassette, dual air bags, power windows, power locks, air conditioning & much more. Stock #446057.

**SALE PRICE \$14,995**

**28585 TELEGRAPH ROAD, Southfield**

**CALL: 810-353-1300 TOLL FREE: 1-800-TAMAROFF**

MON & THURS. 9:30-6:15PM  
TUES./WED./FRI. 8:30-6:15PM  
SAT. 9:30-5PM

On 12 Mile Road, Just West of Telegraph Road

**810-354-6600 TOLL FREE: 1-800-TAMAROFF**

Visit our VIRTUAL SHOWROOM at <http://www.tamaroff.com> up the internet