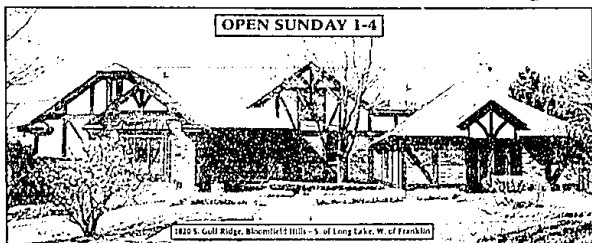


Homes Of Distinction



OPEN SUNDAY 1-4

822 S. Gulf Ridge, Bloomfield Hills - S of Long Lake, W of Franklin

GOLFER'S DREAM
VIEWS OF HAINES LAKE! Quality built Herman Frankel Tudor located on the 14th Fairway in S. Wabuck. 1st floor master suite, gourmet kitchen, white ceramic floor, finished walk-out with wet bar and 2nd kitchen. \$649,000 (G182E) 851-4400



MINI ESTATE
THREE ACRES WITH TREES, STREAM, TENNIS COURT, AND HOT TUB! Charming 4 bedroom Wing Colonial with large kitchen, huge family room, library, formal dining room, 2 wet bars, three fireplaces, garden, decks, and a 3 car garage. \$699,700 (D329E) 851-4400



TOP QUALITY
FABULOUS 4 bedroom Ranch in Washington Heights Sub. Great room, family room, library, Florida room. Gorgeous finished walk-out lower level. Top quality inside & out! \$239,000 (L245E) 851-4400



COURTYARD SETTING
CONTEMPORARY with flat! 1 1/2 story, great room, garden room, library, 1st floor master suite with fireplace, whirlpool, 3 bedrooms, 2 1/2 baths. \$495,000 (W0471E) 641-1660



WALK-OUT LOWER LEVEL
BEAUTIFUL 5 bedroom, 5 bath home on large lot with many recent updates. 1st floor master suite with 2 walk-in closets and designer bath. 2 fireplaces, enormous driveway, and Bloomfield Hills schools. \$450,000 (W456E) 647-6400



CUSTOM BUILT
AWESOME Cape Cod with wonderful views, possible 5,200 square feet, covered 1 1/2 car garage, 14x16 bonus room, deck, and walkout lower level. \$279,900 (J312E) 647-6400



LOVELY
CLASSIC full brick Colonial, custom cherry kitchen, hardwood throughout, huge rooms, oversized garage, deep lot. Walk to downtown Farmington \$264,900 (S337E) 641-1660

SINCE 1948

Chamberlain REALTORS®

The Sign of Success Throughout The Suburbs



JUST LISTED
FABULOUS completely redone 3 bedroom home features beautiful 1st floor master suite, library, finished walk-out lower level. Many updates! Beautiful setting! \$318,000 (P185E) 647-6400



BETTER THAN NEW
LOVELY Tudor features 4 bedrooms, master bath with whirlpool, library with French doors, professionally finished walk-out, spacious deck, nicely landscaped lot. \$298,000 (H193E) 851-4400



SPACIOUS & OPEN
EXCITING 4 bedroom, 2 1/2 bath Colonial with walking distance to downtown Birmingham. Features include family room, updated kitchen, 2 car garage, basement. \$239,900 (B179E) 647-6400



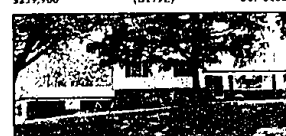
LAKEFRONT
ABSOLUTELY STUNNING Lakefront with incredible hilltop view. Massive 4 level lakeside deck. Master suite with view, 2 skylights, bath with Jacuzzi. \$219,900 (H934E) 647-6400



CLOSE TO PARK
SHARP Colonial has beach and boat privileges on Cass Lake. 3 bedrooms, 2 1/2 baths, fabulous great room, French doors in deck, professionally landscaped lot. \$217,900 (C372E) 851-4400



A GREAT INVESTMENT
PRIME Birmingham area! Open floor plan, living room with fireplace, dining room, finished basement with wet bar, fenced yard, large deck, '94 furnace and air. \$244,900 (B164E) 647-6400



FALL IN LOVE
LOVELY 3 bedroom home on a private fenced setting features hardwood floors, new ceilings, 2 full baths, heated inground pool, and beautiful landscaping. \$199,900 (R239E) 851-4400



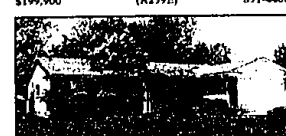
JUST LISTED
GREAT 4 bedroom Colonial beautifully maintained and tastefully decorated has open floor plan, formal dining room, family room, country kitchen, deck, 2 car garage. \$197,900 (K180E) 647-2000



ALMOST NEW
PRIDE OF OWNERSHIP shows in this 4 bedroom Colonial close to Bald Mt. State Park! Neutral decor, 1st floor library, semi-finished basement with office. \$209,900 (F399E) 641-1660



CUL-DE-SAC LOCATION
WELL MAINTAINED 4 bedroom, 2 1/2 bath Colonial with newer mechanicals, some updates, great family sub with pool, tennis court, and clubhouse. \$210,000 (F200E) 851-4400



MANY UPDATES
SHARP Ranch in great family sub with open floor plan, 1st floor laundry, fireplace, central air, finished basement with 2 possible bedrooms, new roof, deep lot. \$182,900 (B543E) 641-1660



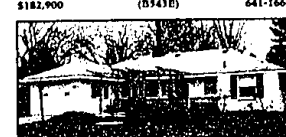
QUIET AND SPACIOUS
LOVELY landscaping surrounds this Kingsway South Condo in heart of Bloomfield Hills. Fireplace, den could be 3rd bedroom, 21'x6' porch, conveniently located. \$149,900 (L150E) 647-6400



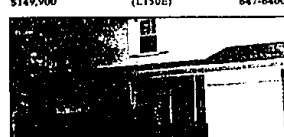
FABULOUS
CONTEMPORARY Ranch always bright and sunny has wonderful large living and dining rooms, great storage, screen porch and deck. Birmingham schools. \$139,900 (N305E) 647-6400



DARLING
BRICK RANCH on gorgeous professionally landscaped lot with 3 bedrooms, 1 1/2 baths, 2-way fireplace, new kitchen, garage needs work. \$129,900 (H160E) 647-6400



LARGE PRIVATE YARD
IMMACULATE 3 bedroom brick Ranch has updated oak kitchen, hardwood floors, central air, front and back decks, and Bloomfield Hills schools. \$129,000 (R231E) 647-6400



MOVE IN CONDITION
FREE STANDING 3 bedroom Condo has fireplace in living room, all appliances, air conditioning, new wall shade windows, lots of storage, attached garage. \$99,900 (R290E) 647-6400



WELL MAINTAINED
CLEAN 3 bedroom brick Ranch with neutral decor, updated eat-in kitchen, finished basement, newer windows, covered patio, and a 2 car garage. \$128,900 (M420E) 641-1660



UPDATED
TERRIFIC home on street with community pride. Big kitchen with appliances, basement, garage, fenced yard, updated plumbing, electrical, shingles, furnace, windows and more. \$94,000 (D153E) 647-6400

BIRMINGHAM (810) 617-6100

ROYAL OAK (810) 617-2000

FROY (810) 611-1000

WEST BLOOMFIELD (810) 851-4400