

OCC election concerns head to prosecutor, court

Action on two fronts is keeping the June 10 Oakland Community College board of trustee election in the news.

First, attorneys for John Wangler, who placed third in the race for two trustee positions, made the finishing touches to a circuit court petition for a new election early this week. If granted, the election would be held again in Royal Oak.

"That's where we are at now,"

said George Mosher, one of the attorneys working on the petition and a founder of OCC. He added that a request for special action hasn't been considered so far.

Despite a primary election being just weeks away, Mosher said hold school/government elections together is impractical since voting precincts are in different locations. The impact of that is Royal Oak would have an additional cost of running a sec-

ond election.

Second, three members of the county board of canvassers sent a letter to the prosecutor's office and to Chief Circuit Court Judge Edward Sosnick, based largely on problems in Royal Oak.

"It's disgusting," Wangler said of the situation. "If nothing else, I hope they see the seriousness of this and stop by their act." "Voting is one of our constitu-

tional rights. . . These things just shouldn't be."

Wangler was referring to such items as poll books not secured with a seal, inability to recount Royal Oak ballots because they were "delivered in an improper manner," according to the letter, improper handling of absentee ballots in Royal Oak.

Chairman of the board of canvassers, Katherine E. Jacobs,

said in the letter that the "main area of potential improprieties" was in Royal Oak. She noted that the Royal Oak tally was counted twice. But she said the area of "perhaps greatest concern" is the changing of seals on computerized machines in all 34 precincts. Seals were changed and new seal numbers were recorded, according to Jacobs, without explanation. And "an area that invites additional

inquiry", she said, are allegations by election challengers that "the tampering with the computer program and resealing took place after the Accuvote Tabulators had been distributed to the precinct Chairpersons."

While Royal Oak was the focus of the board's report, election improprieties in Pontiac and Troy were noted for storage and delivery problems, Jacobs said.

County places departments on Internet

Oakland County Executive L. Brooks Patterson recently announced that three county departments under his jurisdiction have gone live on the worldwide Internet. Initially, Community and Economic Development, Personnel and Media & Communications will have Web sites. However, the Clerk/Register of Deeds Office and the Board of Commissioners will be added to the Internet in the near future.

"This is an exciting day because it puts Oakland County squarely on the cutting edge of the information age," Patterson said. "Being on the Internet will enhance Oakland County's ability to compete in the international marketplace of tomorrow because we will be able to communicate to people all over the world what business opportunities and quality of life features are available in Oakland County."

"Our ability to attract jobs and new business to Oakland County is greatly enhanced by our presence on the Internet," added Oakland County Commissioner Sue Ann Douglas, chairwoman of the Finance and Personnel Committee. "The more people around the world we can reach with our positive message of opportunity and growth, the better chance Oakland County and its citizens will have to be successful in the more competitive arena of the 21st century."

Oakland County officials began exploring the possibility of hooking up to the Internet about a year ago, after a number of requests were received from various county departments for Internet services. These initial requests were filled by opening on-line accounts with America On-Line and CompuServe.

But the urgency of finding a home on the Internet had grown by the summer of 1995. The State of Michigan informed various Oakland County departments, including Health, Community Corrections and the Clerk's Office that in the near future they would be required to do business with the state via the Internet.

As a result, Oakland County launched the Internet Outbound Pilot Project in April of this year. The goal was to determine what, if any, business uses Oakland County government had for Internet.

"The response during the 60-day Pilot Project was simply phenomenal," said Jim Taylor, Information Technology project leader. "We found that Oakland County International Airport actually saved money by using the Internet."

Airport Manager, Karl Randall, says that the Internet has allowed him to reduce the number of phone calls and faxes to Troy Airport because he is able to communicate through E-Mail.

"In 1996, Oakland County will again demonstrate its leadership through the use of technology by going on the Internet and establishing an interactive job application process available to the public 24 hours-a-day, seven days a week," Patterson said in his 1996 State of the County Address.

The Personnel Department has a list of jobs available on its Web page, which will allow interested individuals anywhere in the world to fill out a job application form on-line.

According to Taylor, Oakland County by securing its place in Cyberspace, creates a win-win situation for all concerned. He points out that fewer taxpayers in the future will be forced to make the drive to the county complex to pick up forms or other information.



ANN ARBOR
Apollo
2100 W. Stadium Blvd. at Liberty
(313) 668-6100

DEARBORN
Krug
2131 Michigan Ave.
Between Southfield and Telegraph
(313) 274-8800

DETROIT
Bob Maxey
16901 Mack Ave. at Cadieux
(313) 883-4000

DETROIT
Park Motor
18100 Woodward Ave.
Opposite Palmer Park
(313) 869-5000

FARMINGTON
Bob Dusseau
31625 Grand River Ave.
1 Block West of Orchard Lake Rd.
(810) 474-3170

GARDEN CITY
Stu Evans
32000 Ford Rd.
Just West of Merriman
(313) 425-4300

NOVI
Varsity
49251 Grand River
1-96 1 Block S. of Wisom Exit
(810) 305-5300

PLYMOUTH
Hines Park
40601 Ann Arbor Rd. at I-275
1-800-550-MERC

ROCHESTER HILLS
Crissman
1185 South Rochester Rd.
Between Hamilton and Avon Rd.
(810) 652-4200

ROSEVILLE
Arnold
29000 Gratiot
At 12 Mile Road
(810) 445-6000

ROYAL OAK
Diamond
221 N. Main St. at 11 Mile Road
(810) 541-8830

SOUTHFIELD
Star
2400 W. 12 Mile Rd. at Telegraph
(810) 354-4900

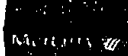
SOUTHGATE
Stu Evans
16800 Fort Street at Pennsylvania
(313) 285-8800

STERLING HEIGHTS
Crest
36000 Van Dyke at 15 1/2 Mile Rd.
(810) 939-6000

TROY
Bob Borst
1930 West Maple
Troy Motor Mall
(810) 643-6600

WATERFORD
Mel Farr
4178 Highland Rd. (M-59)
2 Miles West of Telegraph
(810) 683-9300

YPSILANTI
Sesi
950 East Michigan
9 Miles West of I-275
(313) 565-0112



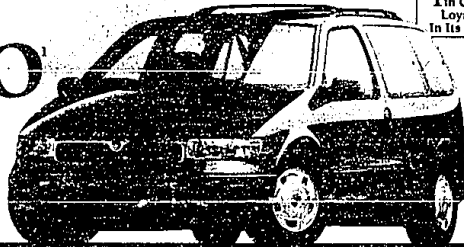
Imagine, Now You Can Get Up To

\$1,500

Cash Back

Standard Features: • 3.0-liter OHC V-6 engine • Dual air bags • Multi-point electronic fuel injection • Front-wheel drive • Four-wheel anti-lock brake system • Power rack-and-pinion steering • Rear window washer/wiper • Solar tint glass • Electric AM/FM stereo cassette • Front cornering lamps • Side window defoggers • Child-proof lock on sliding door • GS Preferred Equipment Package 692A: • Power windows/locks • Dual power mirrors • 7-passenger seating • Luggage rack • 8-way power driver's seat • Cast aluminum wheels • Remote keyless entry

Now Get
\$1,500
Cash Back
On A Purchase Or
RED CARPET
LEASE

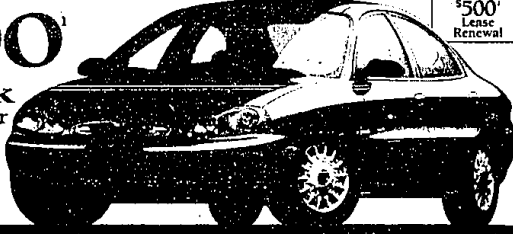


"In Owner
Loyalty
In Its Class"

1996 Mercury Villager

Standard Features: • Dual air bags • 3.0-liter V-6 engine • Sequential multi-port electronic fuel injection • Tilt steering column • CFC-free air conditioner • Flip-fold center console • Cross-car beam construction • Illuminated entry system • GS Preferred Equipment Package 451A: • AM/FM stereo cassette • Power lock group • 6-way power driver's seat • Cast aluminum wheels

\$1,000
Cash Back
On A Purchase Or
RED CARPET
LEASE



"\$500
Lense
Renewal"

1996 Mercury Sable

Standard Features: • 5.0L SPI V-8 engine • 100,000 miles between scheduled tune-ups** • 4-speed electronic automatic transmission • CFC-free air conditioner • 4-wheel disc anti-lock brakes • Dual air bags • Leather-wrapped steering wheel with speed control • Illuminated entry • Light group • Child-proof rear door locks • AM/FM stereo radio with cassette • Battery saver • Preferred Equipment Package 650A: • Running boards • Floor mats • Luggage rack

NEW
1997
Mercury Mountaineer
With
5.0-liter V-8
Standard



1997 Mercury Mountaineer

Imagine Yourself In A Mercury



For \$1,500 cash back on a purchase or Red Carpet Lease on 1996 Mercury Villager or \$1,000 cash back on a purchase or Red Carpet Lease on Sable, take new retail delivery from dealer stock by 10/1/96. Customers eligible for \$500 Lense, renewal incentive must terminate their new or used lease between 7/2/96 and 10/1/96. A customer's lease terminated early will qualify if it is terminated within the program date. Customers who have previously terminated their lease from 4/2/96 through 7/2/96 are eligible if they Red Carpet Lease a 1996 Sable within the program period. Offer ends 10/1/96. *Based on Ford's 1995 New Vehicle Customer Survey. **Under normal driving conditions with routine oil/filter changes. Always wear your safety belt.

Visit us on the Internet at <http://www.lincolnm Mercury.com/detroit>