

MARKET

Real Estate One, INC.

Real Estate One

is ranked #1 in Michigan by:

- National Real Estate and Real Estate Magazine
- Real Estate
- Entrepreneur Magazine
- The Real Estate Professional

The Real Estate One, Inc. is a member of the



FARMINGTON HILLS

PRIVACY AND ELEGANCE - Luxurious custom 4 bedroom home, 3 car garage, beveled glass, marble, 2 fireplaces, 3 1/2 baths, custom cherry cabinets, gourmet island kitchen w/Corian countertops, vaulted ceilings. \$489,000 (KEN) 810-881-1900



ROCHESTER HILLS

WONDERFUL 5 bedroom home on private lot. New furnace and roof, walk-out lower level, hardwood flooring and two fireplaces! \$185,000 (AIN138) 810-882-8500



TROY

HOME ON THE RANGE IN TROY - Outstanding one of a kind immaculate Ranch. Charm and premium updates throughout, almost 1 acre. Too many wonderful features to mention. Must see! \$189,900 (41FOR) 810-882-8890



WEST BLOOMFIELD

UPDATED EVERYTHING! New kitchen, 2 new baths w/jacuzzi tub, gorgeous master suite w/cathedral ceilings & dock. All new carpeting, skylights, big private wooded lot, central air, more. \$184,900 (PON) 810-881-1900



TROY

3 BEDROOM brick Ranch w/formal dining, 1st floor laundry, 2 sided fireplace in family room & master bedroom w/walk-in closet & private bath. \$184,900 (G1SAN) 810-882-8590



GREEN OAK TWP.

A PIECE OF HEAVEN - Enjoy a three bedroom Ranch with access to private golf course Silver Lake. Featuring a tiered deck overlooking a deep, wooded lot. \$184,900 (59363) 313-261-0700



SOUTHFIELD

THIS HOME backs to wooded area. Hardwood floors in living room and dining room, central air, lovely family room w/natural fireplace. Solar water pump in addition to water heater, side turned garage. \$184,900 (239VAL) 810-559-2300



WATERFORD

SUPER TRANSITIONAL BRICK RANCH - w/triple lot, inground pool and 1 block to association beach. Great open floor plan w/tranquil views, 2 car garage w/large workshop, 4 bedrooms, 2 full baths, finished basement. \$159,900 (531012) 810-844-4700



FARMINGTON HILLS

OPEN SUN. 2-5. 29150 Marvin - Location and Great home! 1500 square foot contemporary brick Ranch, huge family room, 2+ car garage, French doors. Beautiful lot and upgraded everything! \$158,900 (MAR) 810-477-1111



NOVI

MINT CONDITION! Three bedroom home w/central air, alarm system, gas fireplace, custom window treatments and neutral decor throughout. A pleasure to sell! \$157,500 (CHE) 810-348-6430



SOUTHFIELD

IMMEDIATE OCCUPANCY - Sprawling Ranch on 1 acre of nature's best piece of real estate. Features 3 large bedrooms, screened porch, family room & full basement. Bring your checkbook! \$149,900 (EDG) 810-477-1111



SOUTHFIELD

CLEAN & SHARP 3 bedroom Colonial, 2 1/2 baths, completely remodeled, new white formica kitchen & appliances, Florida room, nice site family room with marble fireplace, finished basement. \$145,000 (294SOM) 810-889-2300



DETROIT

HOUSE BEAUTIFUL - Updated Colonial in North Rosedale Park. Kitchen redo with stunning cabinets, newer furnace, hardwood floors, loaded glass, cove ceilings. The work! \$139,900 (GLA) 810-477-1111



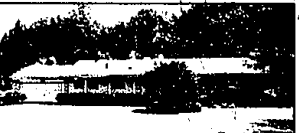
LATHRUP VILLAGE

THREE BEDROOM, two bath Ranch on treed lot with circular drive, central air, sprinkling system, rec room with wet bar, heated Florida room, side entrance garage. \$135,000 (W.CAL) 810-881-1900



MILFORD

VILLAGE OF MILFORD - Quiet Village of Milford presents this 1991 3 bedroom Ranch with open floor plan. Features 2 baths and large walk-out basement. \$134,900 (11512) 810-884-1065



SOUTHFIELD

COUNTRY SETTING - Enjoy your summers & year round in this 3 bedroom Ranch with large lot & inground pool, 2 natural fireplaces, 1 1/2 baths, central air, Florida room and more. \$134,900 (254ED6) 810-559-2300



FARMINGTON HILLS

BRICK RANCH ON LARGE LOT - 3 bedroom, 1 1/2 bath Ranch with enclosed Florida room. Living room with cathedral ceiling and fireplace, central air. Flexible occupancy. Home Warranty. \$129,900 (GLE1B) 810-477-1111



ROYAL OAK

CLASSIC DUTCH COLONIAL! Royal Oak charm w/private yard and deck. Terrific floor plan includes 2 fireplaces, formal dining room and breakfast nook! \$129,900 (824) 810-648-0100



SHELBY TWP.

JUST LIKE NEW! Totally updated Shelby Ranch on double lot. All major updates done - including roof, windows & central air. Could be 4th bedroom (in partially finished basement), updated kitchen & 2 baths. \$127,777 (FRE471) 810-882-8500



WEST BLOOMFIELD

PEBBLE CREEK RANCH! 2 bedrooms, 2 baths, second floor Ranch Condo. End unit. Private deck, garage, basement. In unit utility. Spacious open floor plan, immaculate gated community. \$125,000 (CRE) 810-881-1900



SOUTHFIELD

LOVELY TRI-LEVEL - Natural fireplace, two and a half bath, all appliances to remain. Florida sun room, formal dining room with hardwood floors. Home Warranty offered. \$119,900 (159ADD) 810-559-2300



COMMERCE

WOLVERINE VILLAGE - Super maintained, 3 bedroom, 1 1/2 bath Ranch. Double fireplace between living room and family room. Oak kitchen, attached garage, spacious landscaped lot, lake privileges a block away. \$115,888 (21590) 810-363-8507



BIRMINGHAM

CHARM, LOCATION AND CONVENIENCE! Walk to downtown Birmingham from this updated neutral charmer, 2 bedrooms w/hardwood floors, basement, 2 car detached garage, move in condition. \$112,000 (HOL) 810-881-1900



OAK PARK

BEAUTIFUL 3 bedroom brick Ranch w/2 1/2 baths. Each bedroom includes ceiling fans and large closets. Large living room, finished basement, central air, 2 car garage and privacy fence in backyard. \$98,900 (136R05) 810-559-2300



NOVI

GREAT LOCATION! - 3 bedroom, 1 1/2 bath end unit Condo. Spacious living room w/fireplace, privacy garage, large enclosed patio, basement partially finished, clubhouse, pool & tennis. \$87,000 (OLB) 810-881-1900



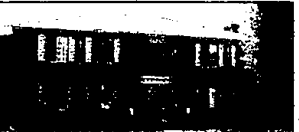
BLOOMFIELD

GREAT LOCATION IN BLOOMFIELD! First floor Condo with double door to covered porch overlooking the courtyard, 2 bedrooms with master bath. Association fee includes gas & water. \$69,000 (626200) 810-644-4700



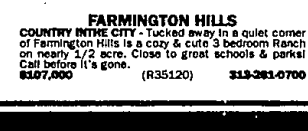
SOUTHFIELD

LOCATION IMPORTANT! Low Price Important? Call quickly on this 2 bedroom Ranch nicely located in Southfield. Eager to sell owner. Needs light repairs, but holds terrific potential. \$69,000 (254LAT) 810-559-2300



BLOOMFIELD

AFFORDABLE BLOOMFIELD CONDO - Bright upper 1 bedroom, 1 bath Condo! Updated! Neutral decor throughout, clubhouse, pool, excellent access to I-75, M-59, Woodward & Telegraph roads. \$63,900 (626856) 810-844-4700



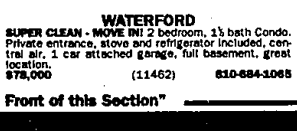
FARMINGTON HILLS

COUNTRY IN THE CITY - Tucked away in a quiet corner of Farmington Hills is a cozy & cute 3 bedroom Ranch on nearly 1/2 acre. Close to great schools & parks! Call before it's gone. \$107,000 (R35120) 810-361-0700



BLOOMFIELD HILLS

THIS IS A DOLLHOUSE! Updated and painted, full basement, double corner lot, treed and spacious. Close to Summit Mall, Square Lake privileges. Garage is extra large combination living room/dining room. \$99,900 (ED1) 810-881-1900



WATERFORD

SUPER CLEAN - MOVE IN! 2 bedroom, 1 1/2 bath Condo. Private entrance, stove and refrigerator included, central air, 1 car attached garage, full basement, great location, but holds terrific potential. \$78,000 (11462) 810-884-1065



WIXOM

REDUCED! 2 BEDROOM TOWNHOUSE co-op. Pool, clubhouse, central air, basement & patio. All appliances included. Convenient to shopping & x-way. Leisure living at affordable price. \$48,000 (HGL) 810-477-1111

"Real Estate One Continued on Front of this Section"

affiliated offices
throughout the United States
and major world cities.

Moving? For housing information
on your destination city,
call 1-800-521-0508