

MARKET

http://realestateone.com

from

Over 67 Years

and growing faster than ever.

Real Estate One, INC.

Real Estate One

is ranked #1 in Michigan by

- National Relocation and Real Estate Magazine
- Real Trends
- Crain's Detroit Business
- The Real Estate Professional

The Real Estate One Family of Companies
 In Michigan: Metro Detroit, Jackson & Lansing • Ralph Abroad



BLOOMFIELD

OPEN SUNDAY 2 TO 5. 3515 Sycamore St. Gracious estate size home. Large gourmet kitchen and incredible master suite. Lush grounds with bridge over fish pond & winding pool. Bloomfield Hills schools.
 \$795,000 (650058A) 810-644-4700



SHELBY TWP.

LAKEFRONT LIVING. Custom ranch with finished walk-out lower level. Wet bar, 3 car garage, 2 fireplaces, central vacuum, hot tub room & sauna, 3 bedrooms, 3 1/2 baths, Utica schools.
 \$655,000 (MTV567) 810-652-6500



WEST BLOOMFIELD

OPEN SUNDAY 2 TO 5. 6522 Roseberry Circle. New construction! Owner had change of plans, still has builder's warranty. 3500 sq. ft. in fabulous new sub. Chelsea Park! Lovely transitional decor. Move right in.
 \$469,900 (645996A) 810-644-4700



WEST BLOOMFIELD

OPEN SUNDAY 1 TO 4. 6586 Crest Top Drive. Quality new construction with all amenities. Two story foyer, volume ceilings, 2 fireplaces, MBR suite with whirlpool and 2 walk-in closets, walk-out basement on premium lot.
 \$464,900 (CRE) 810-851-1900



METAMORA TWP.

GOLF COURSE HOME. Metamora Golf & Country Club Estates. 2900 sq. ft., 4 bedrooms, great room, library, dining room, gathering room, 3 car garage, breakfast room overlooking 13th fairway. Complete 9/15.
 \$445,000 (AUS268) 810-652-6500



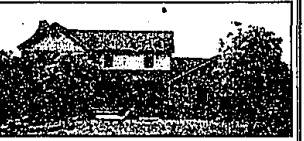
WEST BLOOMFIELD

ABSOLUTE ELEGANCE. Gorgeous, elegant and stunning Walnut Hills home. Marble circular foyer, cathedral ceiling, 4 well-spaced bedrooms. Light oak kitchen, lake and dock privileges.
 \$429,000 (MAU) 810-851-1900



WEST BLOOMFIELD

HARD TO FIND RANCH! Newer condo. Master suite with whirlpool. White island kitchen. Wood floors, 4 bedrooms, den, family room, finished lower level walk-out with 2nd kitchen.
 \$395,000 (643782A) 810-644-4700



WHITE LAKE

RARE AND SERENE FIND. 4 bedrooms, 4 baths, library, finished walkout on 10.66 breathtaking acres of natural beauty. 3+ car garage, 2 fireplaces, luxurious master suite.
 \$334,900 (#11982) 810-684-1085



CLARKSTON

CLARKSTON SCHOOLS. 3 bedroom contemporary on cul-de-sac, built in 1992. 2625 sq. ft. plus 2000 sq. ft. walkout, 1000 sq. ft. deck, enormous master suite!
 \$329,000 (6680N) 810-625-0200



COMMERCE

SPARED NO EXPENSE! Brick ranch 3,200 sq. ft., 2 1/2 bath all on one level. Gourmet oak kitchen, Jennie appliances, partly finished basement. Private setting. Beach privileges Lower Straits.
 \$319,000 (TAMA) 810-851-1900



WEST BLOOMFIELD

TIMBER EDGE SUITE. Wonderful, spacious 3200 sq. ft. Colonial situated on premium cul-de-sac lot. Open floor plan, large great room, fireplace, 3 doorways leading out to huge deck.
 \$284,900 (RAIN) 810-851-1900



SPRINGFIELD

"WOODED ACRE LOT". Full finished walkout, 3 car garage, Clarkston schools, loads of extras. Built 1996 (a must see). Also includes 3 bedrooms and 2 1/2 baths.
 \$269,900 (1166410) 810-652-0200



WATERFORD

OPEN SUNDAY 2 TO 5. 2850 Woodbine. Sunset views over Otter / Sylvan Lake. Spacious 4 bedroom 2 1/2 bath home located on the main body of the lake. Cedar decking, professional landscaping.
 \$276,000 (645398) 810-644-4700



MILFORD

BERWYCK ON PARK CONTEMPORARY. Lowest price in subdivision. Custom. Upgrades. View of Kensington Park. Close to freeway, downtown Milford premium lot. Owner relocating. Hurry on this beautifully decorated home.
 \$269,900 (BER) 810-851-1900



ROCHESTER HILLS

BEAUTIFUL INTERIOR in quality home. Family room with fieldstone fireplace, doorways leading to large deck & private backyard from family room. Updated kitchen, trash compactor, Jennie stove.
 \$257,900 (LOM157) 810-652-6500



BLOOMFIELD HILLS

VACATION AT HOME on the golf course. Impeccable condo with attention to detail! Superb community offers wonderful clubhouse with indoor and outdoor dining, pro shop, etc.
 \$264,900 (67UPP) 810-952-5590



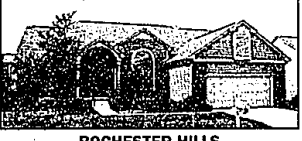
FARMINGTON HILLS

WHAT A PLEASURE! Clean, maintenance free, 4 bedroom, 3 bath home with lovely brick patio overlooking commons with trails, tennis courts & play area. 3 year warranty.
 \$238,500 (HOM) 810-477-1111



FARMINGTON HILLS

WOODED LOT. Spacious 4 bedroom Colonial with library, finished rec room, screened porch & hardwood floors. Some updating completed & appliances included. Quick occupancy.
 \$229,900 (COLO) 810-851-1900



ROCHESTER HILLS

DETACHED CONDO! Open contemporary condo with vaulted ceilings. 3 bedrooms, 2 full baths, master bath has whirlpool tub & shower. Oak kitchen with oak floors & hearth room with fireplace.
 \$229,900 (31FA) 810-952-5590



WHITE LAKE

NEW CONSTRUCTION in popular Whispering Meadows Sub. Beautiful, 1 1/2 story, large lot, still time to pick your flooring. First floor master bedroom, jacuzzi bath.
 \$229,000 (6090WM) 810-363-8307



COMMERCE

HURON HILLS RANCH. What a beautiful Contemporary 3 bed, 2 1/2 bath, built in 1994, very nice upgrades throughout unfinished walkout with 9' ceiling. Exclusive sub! It's perfect!
 \$209,900 (HUR) 810-851-1900



TROY

OVER 2900 SQUARE FEET! In popular Troy. Four bedrooms and three full baths. Two fireplaces, family room & den. Den is open to kitchen. Large lot. Turned garage.
 \$209,900 (649159B) 810-644-4700



WIXOM

SPRAWLING RANCH! Beautiful, open flow floor plan. Newer built with pride and shows like new model. Three bedrooms 2 1/2 baths, great room with fireplace, large decking and gorgeous landscaping.
 \$206,900 (4089M/W) 810-363-8307



COMMERCE

NEW. Central air, carpet, inventory, master bath. Newer 90s kitchen and decor. Recessed lighting accents outstanding living area. Finished basement, fireplace, deck, french doors.
 \$185,000 (1505C) 810-363-8307



WEST BLOOMFIELD

PEBBLE CREEK III. Enter beautiful courtyard to spacious 2400 sq. ft., 3 bedroom condo. White ceramic tiled foyer & kitchen floors. King sized Master suite with private deck, 24 hour gate house.
 \$182,500 (PCW) 810-851-1900



FRANKLIN VILLAGE

GREAT RANCH IN FRANKLIN. Picturesque setting. Family room addition. Fresh paint & clean. Recent updates including roof, etc. Natural fireplace in living room. Home warranty. Birmingham schools.
 \$178,500 (ROM) 810-851-1900



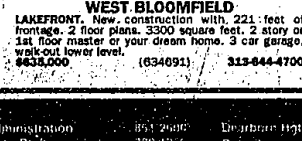
LAKE ORION

VERY SHARP RANCH with finished walkout lower level, 4 bedrooms, 2 1/2 baths, large yard with mature landscaping, close to state recreation area and major freeways.
 \$174,900 (HIO363) 810-652-6500



TROY

BEAUTY SURROUNDS YOU! Lovely 3 bedroom brick ranch on gorgeous wooded lot with stream, see deer from the double deck! Finished basement, newer furnace, windows & roof.
 \$172,600 (63WAL) 810-952-5590



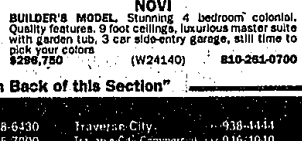
WEST BLOOMFIELD

LAKEFRONT. New construction with 221 feet of frontage. 2 floor plans. 3500 square feet, 2 story or 1st floor master or your dream home. 3 car garage, walk-out lower level.
 \$633,000 (634691) 813-644-4700



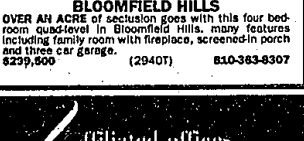
TROY

JUST OFFERED! Almost new 4 bedroom Tudor. Spacious family room with cathedral ceiling. Sun room, formal dining, library, master suite, 3 car garage. Close to freeways.
 \$345,900 (65TAM) 810-952-5590



NOVI

BUILDER'S MODEL. Stunning 4 bedroom colonial. Quality features. 9 foot ceiling, luxurious master suite with garden tub, 3 car side-entry garage, still time to pick your colors.
 \$296,750 (W24140) 810-261-0700



BLOOMFIELD HILLS

OVER AN ACRE of seclusion goes with this four bedroom quad-level in Bloomfield Hills. Many features including family room with fireplace, screened-in porch and three car garage.
 \$279,500 (2940T) 810-363-8307

"Real Estate One Continued on Back of this Section"

Administration	851-7606	Detroit	265-3900	Northville/How	318-6430	Troy	938-4444
Allen Park	389-7236	Dexter	428-3182	Plymouth/Canton	455-7000	Traverse City	936-4040
Ann Arbor	995-1136	Farmington	477-1111	Rochester	652-6500	West Bloomfield	851-1900
Birmingham	647-7160	Farmington Hills	851-1900	Royal Oak	548-9100	Westland/Canton City	326-2000
Bloomfield Hills	338-1470	Franklin Village	674-6660	St. Clair Shores	778-8800	Westland/Hatfield	851-2900
Dearborn	278-9855	Lake Orion	361-6407	St. Clair Shores	778-8800	Westland/Hatfield	851-2900
Dearborn West	278-9855	Livonia	291-0700	St. Clair Shores	778-8800	Westland/Hatfield	851-2900
Detroit	265-3900	Madison	363-1045	Traverse City	937-9640		

Dearborn	278-9855	Detroit	265-3900	Northville/How	318-6430	Troy	938-4444
Detroit	265-3900	Dexter	428-3182	Plymouth/Canton	455-7000	Traverse City	936-4040
Dexter	428-3182	Farmington	477-1111	Rochester	652-6500	West Bloomfield	851-1900
Farmington	477-1111	Farmington Hills	851-1900	Royal Oak	548-9100	Westland/Canton City	326-2000
Farmington Hills	851-1900	Franklin Village	674-6660	St. Clair Shores	778-8800	Westland/Hatfield	851-2900
Franklin Village	674-6660	Lake Orion	361-6407	St. Clair Shores	778-8800	Westland/Hatfield	851-2900
Lake Orion	361-6407	Livonia	291-0700	St. Clair Shores	778-8800	Westland/Hatfield	851-2900
Livonia	291-0700	Madison	363-1045	Traverse City	937-9640		

Dearborn	278-9855	Detroit	265-3900	Northville/How	318-6430	Troy	938-4444
Detroit	265-3900	Dexter	428-3182	Plymouth/Canton	455-7000	Traverse City	936-4040
Dexter	428-3182	Farmington	477-1111	Rochester	652-6500	West Bloomfield	851-1900
Farmington	477-1111	Farmington Hills	851-1900	Royal Oak	548-9100	Westland/Canton City	326-2000
Farmington Hills	851-1900	Franklin Village	674-6660	St. Clair Shores	778-8800	Westland/Hatfield	851-2900
Franklin Village	674-6660	Lake Orion	361-6407	St. Clair Shores	778-8800	Westland/Hatfield	851-2900
Lake Orion	361-6407	Livonia	291-0700	St. Clair Shores	778-8800	Westland/Hatfield	851-2900
Livonia	291-0700	Madison	363-1045	Traverse City	937-9640		

Dearborn	278-9855	Detroit	265-3900	Northville/How	318-6430	Troy	938-4444
Detroit	265-3900	Dexter	428-3182	Plymouth/Canton	455-7000	Traverse City	936-4040
Dexter	428-3182	Farmington	477-1111	Rochester	652-6500	West Bloomfield	851-1900
Farmington	477-1111	Farmington Hills	851-1900	Royal Oak	548-9100	Westland/Canton City	326-2000
Farmington Hills	851-1900	Franklin Village	674-6660	St. Clair Shores	778-8800	Westland/Hatfield	851-2900
Franklin Village	674-6660	Lake Orion	361-6407	St. Clair Shores	778-8800	Westland/Hatfield	851-2900
Lake Orion	361-6407	Livonia	291-0700	St. Clair Shores	778-8800	Westland/Hatfield	851-2900
Livonia	291-0700	Madison	363-1045	Traverse City	937-9640		

Unaffiliated offices throughout the United States and major world cities.

Moving? For housing information on your destination city, call 1-800-521-0508.