

**COMMUNITY MESSENGER**

Community Messenger features spiritual announcements from Oakland County religious institutions. Write: Community Messenger, c/o Beliefs & Values Editor, Observer & Eccentric Newspapers, 805 E. Maple, Birmingham, MI 48009. Our fax number is (810) 644-1314.

**HELPING HAND**  
Birmingham Area Church Women United is in need of donations for its annual mission site visit to the Women's Survival Center Child Care Center in Pontiac on Friday, Dec. 6. Each year, a different Oakland County site is visited. The following gift items are suggested: diapers, diaper wipes, facial tissue, liquid antibacterial soap, craft supplies, washable markers and crayons, construction paper, large cans of 100-percent juice and nonsweetened cereal. Also needed are women's clothes and shoes suitable for wearing to job interviews (large sizes especially). Drop off contributions at First Presbyterian Church, 1069 W. Maple, Birmingham. Call Lois Poston: (810) 646-9574.

**FAMILY SABBATH**  
Cong. B'nai Moshe, 6800 Drake Road, West Bloomfield, offers relaxed, participatory Sabbath services for parents and children on selected Saturday mornings in the west foyer while the main prayer service takes place in the synagogue sanctuary. The series is organized by grade level with age-appropriate story telling, songs, puppet and prayer. The free services are brief and informal. All are welcome, regardless of affiliation. Second grade families will meet at 10:30 a.m. on Nov. 23, and fourth-grade families will meet at 10:30 a.m. on Dec. 7. For information, call Education Director Rita Abramson at (810) 788-0600.

**FAMILY SABBATH**  
Cong. B'nai Moshe, 6800 Drake Road, West Bloomfield, offers relaxed, participatory Sabbath services for parents and children on selected Saturday mornings in the west foyer while the main prayer service takes place in the synagogue sanctuary. The series is organized by grade level with age-appropriate story telling, songs, puppet and prayer. The free services are brief and informal. All are welcome regardless of affiliation. Fourth-grade families will meet at 10:30 a.m. on Dec. 7. For information, call Rita Abramson at (810) 788-0600.

**HOLIDAY CONCERT**  
The St. Bede's Players presents a Concert of Holiday Music at 7:30 p.m. on Saturday, Dec. 7, at St. James Episcopal Church, 365 W. Maple Road, Birmingham. "Bellissima" an English handbell choir will be featured when the concert is held at 3 p.m. on Sunday, Dec. 8, at Community Presbyterian Church, 4301 Monroe at Sashabaw, Waterford. Tickets can be purchased at the door for \$7 for adults and \$4 for students. For information, call (810) 657-7245.

**WITH LOVE**  
Nativity Episcopal Church will present a new drama "From Narnia, with Love," at 6 p.m. Sunday, Dec. 8. "From Narnia, with Love" is a one-character play in which audiences will be able to meet the author and theologian, C.S. Lewis (1898-1963). Actor and playwright Mark McPherson will dramatically personify Lewis, author of such allegorical Christian classics as The Lion, the Witch and the Wardrobe. "Particularly in this day when so many persons are searching for something to believe in, I feel that Lewis' brand of 'mere Christianity' has all the elements of a true faith quest," says McPherson. "He had his own hurdles to jump. I want to show how difficult that journey of faith was for him, perhaps because it is something I think many of us would identify with. No stranger to the business of 'becoming' famous personages on stage, McPherson, 49, has previously dramatized Sir Arthur Conan Doyle, Sir Winston Churchill, George Bernard Shaw, Charles Dickens and Walter Egan. After premiering with several local performances, McPherson will schedule productions at a cross-section of churches throughout the country, as well as in Belfast, where C.S. Lewis was born. Tickets are available in advance and at the door for \$10 each. There will be a reception after each performance. Nativity in on 14 Mile, between Laher and Evergreen, in Bloomfield Township. Call (810) 646-4100.

**HANUKKAH CELEBRATIONS**  
Cong. B'nai Moshe, 6800 Drake Road, West Bloomfield, is hosting two Hanukkah events. A free Hanukkah decorating party featuring arts and crafts and itzkies will be held at 4:30 p.m. on Wednesday, Dec. 4. A Hanukkah dinner and talent show will be held at 6 p.m. on Monday, Dec. 9, at a cost of \$6 per person, or \$4 for children under 13. Reservations are required for both events. Synagogue membership is not required, but all are welcome. To make reservations or to sign up for the talent show, call Rita Abramson at (810) 788-0600.

**SABBATH MINYAN**  
Cong. B'nai Moshe, 6800 Drake Road, West Bloomfield, will offer a Sabbath Morning Learning Minyan for Adults at 10:30 a.m. on Saturday, Dec. 14. The session is part of a series taught by Leonard Wanotik, author of "Sedra Study for Everyone." It will give an overview of the significance, mechanics and body language of "The Sh'ma," a central prayer, along with the history of its inclusion in the Jewish worship service on a daily basis.

All are welcome to the free program. Actor and humorist and Avi Hoffman will perform at 7 p.m. Sunday, Dec. 16. Proceeds will benefit religious and educational programming. Ticket prices range from \$20 to \$10. For information about either event, call (810) 788-0600.

**LEARNING MINYAN**  
The next session of Cong. B'nai Moshe's Sabbath morning adult learning minyan, taught by Leonard Wanotik, will be held Dec. 14. The focus is on the Sh'ma: a

discussion of the content, mechanics, significance and body language of this central prayer and the story of how it came to be included as part of the daily Jewish worship service. The minyan meets from 10:30 to 11:30 a.m. in the west foyer of the synagogue while the main service takes place in the sanctuary at 6800 Drake, West Bloomfield. All are welcome. For information, call Rita Abramson at (810) 788-0600.

**PRESCHOOL ENROLLMENT**  
Cong. B'nai Moshe, 6800 Drake Road, West Bloomfield, is now

taking registration for "Hava Nagila Let's Be Happy!" The latest in a series of eight-week Jewish enrichment programs for 3 and 4-year olds will be offered at the synagogue from 1 to 2:30 p.m. on Thursday afternoons beginning Jan. 9. The cost is \$75 per child and space is limited. The theme will be "Keshet Ha'Tvrit" (Hebrew Rainbow), and the program will feature stories, music and language activities. "Hava Nagila" is open to all interested families regardless of affiliation. To register, call Education Director Rita Abramson at (810) 788-0600.



**OUR METRO DETROIT LINCOLN-MERCURY DEALERS**

**ANN ARBOR**  
**Apollo**  
2100 W. Stadium Blvd. at Liberty  
(313) 668-6100

**DEARBORN**  
**Krug**  
21331 Michigan Ave.  
Between Southfield and Telegraph  
(313) 274-8800

**DETROIT**  
**Bob Maxey**  
16901 Mack Ave. at Cadieux  
(313) 885-4000

**DETROIT**  
**Park Motor**  
1810 Woodward Ave.  
Opposite Palmer Park  
(313) 869-5000

**BIRMINGHAM**  
**Bob Duseau**  
31625 Grand River Ave.  
1 Block West of Orchard Lake Rd.  
(810) 474-3170

**GARDEN CITY**  
**Stu Evans**  
32000 Ford Rd.  
Just West of Meridian  
(313) 425-4300

**NOVI**  
**Varsity**  
49251 Grand River  
1361 W. Mack St. at Wilcox Exit  
(921) 305-3300

**PLYMOUTH**  
**Hines Park**  
40601 Ann Arbor Rd. at I-275  
1-800-930-MERC

**ROCHESTER HILLS**  
**Crisman**  
1185 South Rochester Rd.  
Between Hamlin and Avon Rd.  
(810) 652-4200

**ROSEVILLE**  
**Arnold**  
29000  
At 12 Mile Road  
(810) 445-6000

**ROYAL OAK**  
**Diamond**  
23100 W. 11 Mile St. at 11 Mile Road  
(810) 541-8830

**SOUTHFIELD**  
**Star**  
24350 W. 12 Mile Rd. at Telegraph  
(810) 354-4900

**SOUTHGATE**  
**Stu Evans**  
16800 Fort Street at Pennsylvania  
(313) 283-8800

**STERLING HEIGHTS**  
**Crest**  
36200 Van Dyke at 15 1/2 Mile Rd.  
(810) 939-6000

**TROY**  
**Bob Borst**  
1950 West Maple  
Troy Motor Mall  
(810) 643-6600

**WATERFORD**  
**Mel Farr**  
4178 Highland Rd. (M-59)  
2 Miles West of Telegraph  
(810) 683-9500

**YPSILANTI**  
**Sesi**  
950 East Michigan  
9 Miles West of I-275  
(313) 482-7133

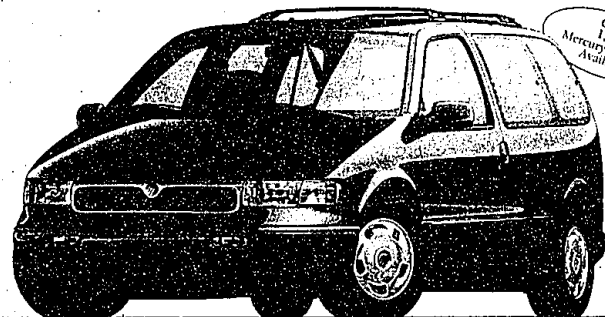


**At Your Metro Detroit Lincoln-Mercury Dealers**  
**Save Now On Special Dealer Purchases**  
**Over 3,000 Vehicles Available**

Standard Features: • 3.0-liter OHC V6 engine • Dual air bags\* • Multi-point electronic fuel injection • Front-wheel drive • Tilt steering column • Power rack-and-pinion steering • Rear window washer/wiper • Solar tint glass • Electronic AM/FM stereo cassette • Front cornering lamps • Side window defoggers • Childproof lock on sliding door • GS Preferred Equipment Package 692A: • Power windows/locks • Dual power mirrors • 7-passenger seating • Luggage rack • 8-way power driver's seat • Aluminum wheels • Remote keyless entry • 4 captain's chairs • Rear seat heat/air-conditioning controls

**\$279<sup>1</sup>** Or **\$1,000<sup>2</sup> Cash**  
On A Purchase Or  
**RED CARPET LEASE**  
Per Month, 24-Month Lease

24-Month/24,000-Mile Red Carpet Lease	
First Month's Payment	.....\$279
Down Payment	.....\$1,000
(Net of Lease Cash Rebate)	.....\$1,000
Refundable Security Deposit	.....\$1,000
Cash Due at Signing	.....\$1,579



Over 1,600 Mercury Villagers Available.

**1997 Mercury Villager GS**

\*97 Villager GS with PEP #92A MSRP \$24,195 excluding title, tax and license fee. Lease payments based on average capitalized cost of 90.80% of MSRP for Villager for 24-month closed-end Ford Credit Red Carpet Leases purchased in the Detroit Region through 10/31/96. Some payments higher, some lower. See dealer for payment/terms. Lessee may have option to buy vehicle at lease end at price negotiated with dealer at signing. Lessee responsible for excess wear/tear and mileage over 21,000 at \$15/mile. Credit approval/insurability determined by Ford Credit. Actual security deposit will vary depending on taxes and other fees. For special lease terms and \$1,000 Lease Cash Rebate, take new retail delivery from dealer stock by 1/31/97. Total amount of monthly payments is \$6,696. See dealer for complete details. For \$1,000 cash back on a purchase or Red Carpet Lease of a 1997 Villager, take new retail delivery from dealer stock by 1/31/97. Excludes tax and other fees. Always wear your safety belt.

Standard Features: • All-wheel drive • Dual air bags\* • 5.0-liter V-8 engine • Sequential multi-point electronic fuel injection • Tilt steering column • CFC-free air conditioner • Solar tint glass • 100,000-mile tune-up interval\*\* • Illuminated entry system • 4-wheel disc anti-lock brakes Preferred Equipment Package 655A: • Anti-theft alarm • Running boards • 6-way power sport bucket seats • Remote keyless entry

**\$349<sup>3</sup>**  
Per Month, 24-Month Lease

**Special Dealer Purchase. Great Selection Now.**



Only 1,200 Mercury Mountaineers Available.

**1997 AWD Mercury Mountaineer**

**See Your Metro Detroit Lincoln-Mercury Dealer Now.**

\*97 AWD Mountaineer with PEP #65A MSRP \$31,080 excluding title, taxes and license fee. Lease payments based on average capitalized cost of 91.30% of MSRP for Mountaineer for 24-month closed-end Ford Credit Red Carpet Leases purchased in the Detroit Region through 10/31/96. Some payments higher, some lower. See dealer for payment/terms. Lessee may have option to buy vehicle at lease end at price negotiated with dealer at signing. Lessee responsible for excess wear/tear and mileage over 24,000 at \$15/mile. Credit approval/insurability determined by Ford Credit. Actual security deposits will vary depending on taxes and other fees. For special lease terms, take new retail delivery from dealer stock by 1/31/97. Total amount of monthly payments is \$8,376. See dealer for complete details. Excludes tax and other fees. Always wear your safety belt. Under normal driving conditions with routine fluid/filter changes.

Visit us on the Internet at <http://www.lincolnm Mercury.com/detroit>