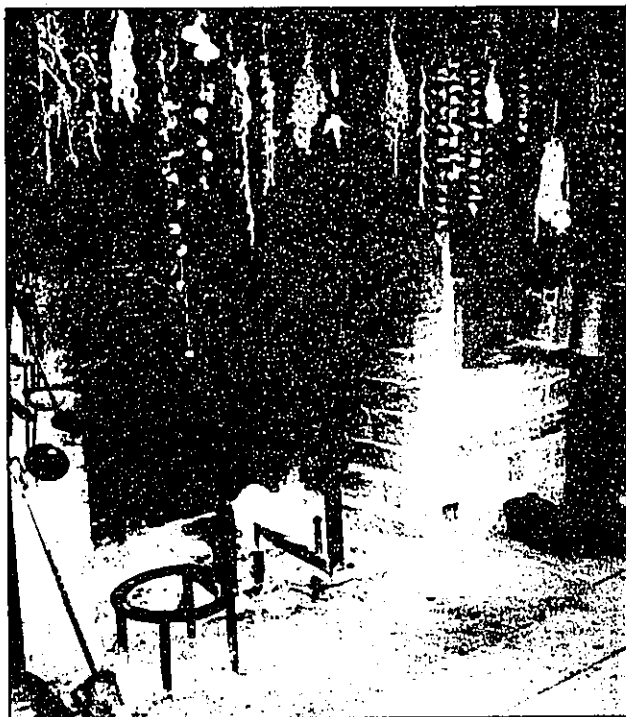




## garden spot



MARTY FIGLEY

Herbs in the house: Herbs dry in the Dagget House.

# Busy volunteers harvest goodwill



MARTY FIGLEY

This year marks the 15th anniversary of the Village Herb Associates, an active group of women who tend the three herb gardens and do a lot of other things at Greenfield Village, Dearborn. Begun in 1981 by Mary Gareth, who taught herb classes at the Village, the number has grown from 20 members and has now reached its limit of 85.

The three herb gardens are the Garden of the Leavened Heart, the Medicinal Herb Garden and the Luther Bur-

bank Garden.

The Garden of the Leavened Heart is in front of the Mary and Martha Chapel. This was originally Clara Ford's garden and was next to the Eagle Tavern. The Taste of History building now stands there.

The Medicinal Herb Garden at Dr. Howard's home contains medicinal plants, many of which he probably used in his practice in Tekonsha, Mich.

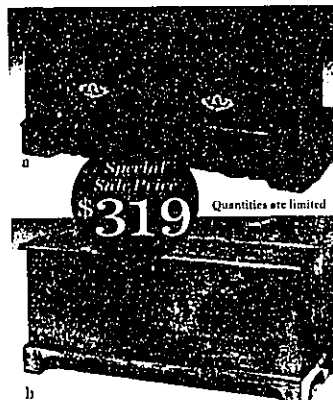
The Luther Burbank Garden, adjacent to his home, was once "behind the scenes" but was moved to the Burbank home in 1993. That garden was off limits to visitors, said Julie Krist of Lathrup

See Figley, page D6

## SPECIAL PURCHASE

Your Choice

## LANE CEDAR CHESTS



- (a) 31% Off Lane "Monterey" cedar chest with a cherry finish, simulated drawers with brass finished hardware and hunter green woven upholstered top 44" x 15" x 18 1/4", 3.2 cu. ft. cedar storage, reg. \$465.
- or
- (b) 31% Off Lane "Hancock" shaker style cedar chest in a cherry finish, 44" x 15" x 20 1/4", 4.1 cu. ft. cedar storage, reg. \$465.

- All in stock for FREE immediate delivery
- FREE in home set-up
- FREE one year service
- Convenient financing available

*Scott Shuptrine*  
The Furniture Store Since 1927  
The best just got better™

Sale ends Monday, December 16th.

Discounts off retail price. Delivery and set-up charges extra. Not to be combined with any other public or private offer.

OPEN DAILY 10 A.M. - 9 P.M. SUNDAY 12-5 P.M.  
BLOOMFIELD HILLS - reg. toll-free 1-800-368-3300  
TROY 977 E. FOURTEEN MILE ROAD, 585-3300  
Just east of Oakland Mall  
BLOOMFIELD HILLS 4110 TELEGRAPH, 642-0070  
On the NW corner of Long Lake & Telegraph  
NOVI 43606 W. OAK DRIVE, 349-0044  
Across from Turtle Creek Mall

## SPECIAL PURCHASE

## 50% OFF LEATHER RECLINER



Special savings this week-end only! Large selection of leather recliners—many are Half Off.

High-leg Chippendale recliner in a supple burgundy leather with nail head trim from BURGADUNKER (available by special order in navy and hunter green). reg. \$1599.

- All in stock for FREE immediate delivery
- FREE in home set-up
- FREE one year service
- Convenient financing available

*Scott Shuptrine*  
The Furniture Store Since 1927  
The best just got better™

Sale ends Monday, December 16th.

Discount off retail price. Delivery and set-up charges extra. Not to be combined with any other public or private offer.

OPEN DAILY 10 A.M. - 9 P.M. SUNDAY 12-5 P.M.  
BLOOMFIELD HILLS - reg. toll-free 1-800-368-3300  
TROY 977 E. FOURTEEN MILE ROAD, 585-3300  
Just east of Oakland Mall  
BLOOMFIELD HILLS 4110 TELEGRAPH, 642-0070  
On the NW corner of Long Lake & Telegraph  
NOVI 43606 W. OAK DRIVE, 349-0044  
Across from Turtle Creek Mall