

## ARTISTIC EVENTS

This is a listing of gallery exhibits and other art-related events that are continuing, and of galleries that run regular shows. Openings and other events are listed in *Thursday's Arts and Entertainment* section. Send announcements of Oakland County art gallery exhibitions to: Mary Kleimic, Observer & Eccentric Newspapers, 805 E. Maple, Birmingham 48009; fax (810) 644-1314.

## CREATIVE ARTS CENTER

Through Dec. 23 - The annual Holiday Marketplace Gift Shop at 47 Williams, Pontiac, features works by local artists; (810) 333-7849.

## DETROIT ARTISTS MARKET

Through Dec. 23 - "Madrigal Madness," a holiday exhibit, at 300 River Place, Suite 1650, Detroit; (313) 393-1770. Last Minute Monday hours: 11 a.m. to 5 p.m.

## GALLERY NIKKO

To Dec. 24 - The gallery at 470 N. Woodward, Birmingham, features origami boxes by Diana Hinata, mugs by Lori Mehan and jewelry by Celia Landman, Eric Zap and Nancy Daniels; (810) 647-0580.

## SANDRA COLLINS

To Dec. 24 - The retail craft gallery at 470 N. Woodward, Birmingham, presents new work from wood artist Shinichi Miyazaki, jewelry artist Lynn Strong, fiber artist Randall Darwall and glass artists Cynthia Daibed and Chris Stef-fens; (810) 642-4755.

## CLIQUE GALLERY

To Dec. 24 - "LAMHER," universal woman images by Barbara Nigro, at 200 W. Fifth, Royal Oak; (810) 645-2200.

## TOUCH OF LIGHT

To Dec. 24 - Holiday Glass Show at 23426 Woodward, Ferndale; (810) 543-1868.

## BUNTING GALLERY

To Dec. 27 - "Fiction," an exhibit of new paintings and sculpture by James Stephens, at 514 S. Washington, Royal Oak; (810) 645-4820.

## Q.R. N'NANDI GALLERY

To Dec. 28 - "Sojourn," works from 1930 to 1990 by Lois Mailou Jones, at 161 Townsend, Birmingham; (810) 642-2700.

## LAWRENCE STREET GALLERY

Through Dec. 28 - Multimedia Holiday Gift Exhibit for invited artists at 6 N. Saginaw, Pontiac; (810) 334-6716.

## ANN ARBOR ART CENTER

Through Dec. 29 - The 18th annual Holiday Gifts Show, featuring pottery by Michael and Michelle Crumb of Rochester Hills, at 117 W. Liberty, Ann Arbor; (313) 994-8004.

## URBAN PARK

Through Dec. 29 - "A Girl's World," photography exhibit by five southwest Detroit girls who study in the Alternatives for

Girls Prevention Program under the direction of Observer & Eccentric photographer Sharon Lemieux, on the second level of Trappers Alley, 508 Monroe, Detroit; (313) 963-6445.

## CHRISTMAS AT THE CENTER

Through Dec. 29 - The Shiawassee Arts Council's eighth annual show and sale of crafts and art works runs 1-5 p.m. daily (closed Christmas Day); (617) 723-8354.

## CLARKSTON FINE ARTS GALLERY

Through Dec. 30 - The gallery at 7151 N. Main, Clarkston, celebrates the holidays and a winter wonderland with special works from all of its exhibiting artists, including floral arrangements by master floral designer and artist Ruth Troeger Allen; (810) 625-8439.

## OAKLAND COUNTY GALLERY

Through Dec. 30 - Mapping the Course of County History, a cartographic outline of Michigan and Oakland County as drawn from the map collection of the Oakland County Pioneer and Historical Society Library, in the Executive Office Building, 1200 N. Telegraph, Pontiac; (810) 858-0415.

## THE ART GALLERY

During December - Featured at the artists cooperative at Great Oaks Mall, Walton and Livernois, Rochester Hills, are Ruth Allen, collage; Maxine Johnson, jewelry; Julie Smith, landscapes and flowers in acrylic; and Al Ugelow, scenes from all over in watercolor. Call (810) 651-1579.

## ELIZABETH STONE GALLERY

Through Dec. 31 - "The Magical World of Children's Book Illustration" at 536 N. Woodward, Birmingham, showcases a collection of original art and new, limited edition lithographs by beloved and best-selling children's book illustrators; (810) 647-7040.

## FARMINGTON PUBLIC LIBRARY

Through December - The Farmington Artists Club presents an exhibit of abstract paintings and collage by Sasha Kwaseloff of West Bloomfield at 23550 Liberty, near Farmington Road and Grand River, 9 a.m. to 9 p.m. Monday-Thursday, 9 a.m. to 5 p.m. Friday, 1-5 p.m. Saturday-Sunday.

## PARK WEST GALLERY

To Dec. 31 - The gallery in the Park West Plaza at 29469 Northwestern Highway, Southfield, has its annual holiday sale; (810) 354-2343.

## ROBERT KIDD GALLERY

Through Dec. 31 - "A 20th Anniversary Exhibition" at 107 Townsend, Birmingham; (810) 642-3909.

## START GALLERY

To Dec. 31 - "Artist Series II," featuring mixed media/photography by Linda Seberman, sculpture by Christine Hagedorn, ceramics by David Smith, paintings by Michael Vidakovich,

drawing/sculpture by Angelina Davis and photography by Scott Webb, continues at 211 N. Woodward, Birmingham; (810) 644-2991.

## DEBORAH ROBERTS DESIGN ROOM

During December - The shop at 205 W. 11 Mile, Royal Oak, in "picture perfect," featuring artful photo frames designed and created by Waitz, Hovland, Schwartz, Eisenhardt, Kramp and other artists; (810) 643-7372.

## DETROIT GALLERY OF CONTEMPORARY CRAFTS

To Dec. 31 - The gallery at 104 Fisher Building, Detroit, celebrates its 20th anniversary with "Objects of Wonder and Delight," a selection of artist-made gifts including a wide range of giving ideas for under \$20; (313) 873-7888.

## HABATAT GALLERIES

To Dec. 31 - Sculpture by Daniel Clayman; large scale, freestanding glass murals with abstractly painted surfaces by Bohumil Elias; and works by 10 Japanese artists at 7 N. Saginaw, Pontiac; (810) 333-2060.

## JANE SPEAKS MODERN ART

Through December - Part 2 in the "Prisoner of Gender" series by Jeff Bourgeois, a sexually charged installment combining elements of video, painting and assemblage, at 23 W. Lawrence, Suite 101, Pontiac; (810) 334-6038.

## PEWABIS POTTERY

Through Dec. 31 - Annual holiday invitation at 10126 B. Jefferson, Detroit; (313) 822-0954.

## SWANN GALLERY

To Dec. 31 - Exhibit by Nora Chappa Mendoza and "The Christmas Show" at 1250 Library, Detroit; (313) 955-4826.

## WARREN CITY HALL GALLERY

To Dec. 31 - Oil and watercolor works by Betty Wolf are exhibited at 29500 Van Dyke.

## EUGENIA'S HAIR AND ART GALLERY

The gallery at 212 W. Third, Rochester, features handcrafted gifts during the holiday season to benefit non-profit organizations; (810) 656-0560.

## GALLERY: FUNCTIONART

"Home for the Holidays" runs through the holiday season at 21 N. Saginaw, Pontiac, featuring functional accessories including ornaments, menorahs, jewelry,

vases and stemware; (810) 333-0333. Teresa Young and Marianne Spotswood are featured jewelry artists this month.

## POSNER GALLERY

Through Jan. 1 - Group show featuring new works on paper and canvas by Helen Febbo, Barbara Coburn, Amy Bauman, Lenore Gimpert and sculptures by Mary Gillis at 523 N. Woodward, Birmingham; (810) 647-2552.

## ESPRESSO ROYALE

To January - Show of images exploring alternative photographic techniques by Cynthia Davis at 640 Packard, Ann Arbor, and show of recent prints by Nancy Pennell at 324 State, Ann Arbor; part of the offsite exhibit program of the Ann Arbor Art Center. Call the center at (313) 994-8004.

## JANICE CHARACH EPSTEIN MUSEUM/GALLERY

To Jan. 2 - Quilt exhibit in the Jewish Community Center, 6600 W. Maple at Drake, West Bloomfield; (810) 661-7641.

## A.C.T. GALLERY

Through Jan. 3 - The gallery at 29 E. Grand River, Detroit, presents its annual Holiday Show, a cash and carry exhibit; (313) 961-4336.

## SUSANNE HILBERRY GALLERY

Through Jan. 4 - Photographs by internationally known artist Kiki Smith, and photographs by Coryl Davis, at 555 S. Woodward, Birmingham; (810) 642-8250.

## THE WETNAM COLLECTION

Through Jan. 4 - Metal sculpture by Boris Bally, Tom Joyce and David Seerest exhibited at 132 N. Woodward, Birmingham; (810) 645-6212.

## ROOM WITH A VIEW

To Jan. 4 - "Insight: A Vision," a photography exhibit by Thomas Van Dyke, continues at 803 N. Main, Royal Oak; (810) 648-1446.

## CRANBROOK ART MUSEUM

To Jan. 5 - "Messengers of Modernism: American Studio Jewelry 1940-1960" and "Signals: Late 20th Century American Jewelry" at 1221 N. Woodward, Bloomfield Hills; (810) 645-3323. Also: "Cranbrook Academy of Art Winter Degree Show," featuring works by metalsmiths Brian

Bird and Sung Min Park, two candidates for graduation from the art academy.

## CREATIVE RESOURCE

To Jan. 5 - "The Colour of Life," exhibit of new oil paintings by Richard Jerry, at 162 N. Woodward, Birmingham; (810) 647-3688.

## DETROIT INSTITUTE OF ARTS

To Jan. 5 - "African Form and Imagery: Detroit Collects" continues at 6200 Woodward. Call (313) 833-7990.

## U OF M MUSEUM OF ART

To Jan. 5 - "Images d'Espinal," 18th to 20th century color prints, at 625 S. State, Ann Arbor; (313) 764-0395.

## DOS MANOS

Through Jan. 6 - The gallery of Latin American folk art at 210 W. Sixth, Royal Oak, features its annual Colombian "Fesabre" exhibit; (810) 642-6866. "Fesabre" is the name given to Nativty scenes displayed in many Central and South American countries. Using simple materials such as burlap and Spanish moss, families create a village scene complete with people and animals.

## BERMAN GALLERY AND LIGHTING STUDIO

Through Jan. 10 - "Masked Revelations," exhibit of paintings by Taura, at 303 Detroit Street, Suite 104, Ann Arbor; (313) 741-0571.

## DONNA JACOBS GALLERY LTD.

Through Jan. 11 - The 17th annual Holiday Show at 574 N. Woodward, Birmingham, includes artifacts of many cultures and time periods, from Luristan to Rome to Peru and 3,000 years in between; (810) 540-1600.

## KNOLLWOOD GALLERY

Through Jan. 11 - An exhibit of original paintings and drawings by internationally known artist Joanne Flewotomas continues at 6447 Inkster Road, Bloomfield Hills; (810) 626-9844.

## ALFRED BERKOWITZ GALLERY

To Jan. 14 - "Toys on Wheels," an exhibit in celebration of the 100th anniversary of the automobile, in the Mardigan Library at the University of Michigan-Dearborn on Evergreen; (313) 593-5400. The show features rare, antique toys as well as lim-

ited edition reproductions on loan from local collectors, including unusual wind-up toys from Ted Hadfield and Wendy McGaw, pedal-car airplanes from Carl Kriewall of C&N Reproductions and an exotic assortment of wooden, rubber and metal wheeled vehicles from Richard and Linda Kughn's Carail.

## REVOLUTION: A GALLERY PROJECT

To Jan. 11 - A ceramic exhibit by John Stephenson, and "Lincation," a show of works by Robert Adams, Jim Chutelein, Brenda Goodman, Jim Melchert and Buzz Spector, at 23257 Woodward, Ferndale; (810) 541-3444.

## THE SYBARIS GALLERY

Through Jan. 11 - Baskets by Mary Giles and translucent wall sculpture by Carrie Seid at 202 E. Third, Royal Oak; (810) 644-3388. Also: "Contemporary Thought in Jewelry" and jewelry for the holidays.

## U OF M MUSEUM OF ART

To Jan. 12 - "Venice, Traditions Transformed: Works from the Sarah Campbell Blaffer Foundation and the University of Michigan" continues at 625 S. State, Ann Arbor. The exhibit brings together paintings, drawings, prints and illustrated books from the 16th and 18th centuries in Venice. Call (313) 764-0395.

## KHEDOS CAFE

Through Jan. 15 - "What You Might Find," photograph exhibit by an international artist collective, at 240 W. Nine Mile, Ferndale; (810) 645-7627.

## SWORDS INTO PLOWSHARES

PEACE CENTER AND GALLERY Through Jan. 18 - "Peace Quilting II" at 33 E. Adams on Grand Circus Park, Detroit; (313) 963-7575.

## THE HALSTED GALLERY

To Jan. 19 - An exhibit of new photographs by Michael Kenna and portraits by Yousuf Karsh at 560 N. Woodward, Birmingham; (810) 644-8284.

## PIERCE STREET GALLERY

Through Jan. 31 - A show of platinum and palladium photographs by Wendy Holmes continues at 217 Pierce, Birmingham; (810) 646-6950.

## Secured Loan Bonanza

All Terrain Vehicles  
Campers  
Jet Skis  
Motorcycles  
Autos

8.65% APR\*

Motor homes  
RVs  
Snowmobiles  
Trailers



Huntington Banks

Member FDIC



For a limited time, All secured loans will feature a fixed rate of 8.65% APR\*. Maximum term is 48 months. You just need a savings or checking account with us, and we'll deduct your payments automatically. If you're buying a new vehicle, or simply want to refinance your current loan with another bank, do not miss this opportunity!

CALL HUNTINGTON BANKS OF MICHIGAN  
1-800-642-INFO (4636)  
OR SEE A PERSONAL BANKER FOR DETAILS

Certain types of loans and existing Huntington Banks of Michigan, Huntington Acceptance, and Huntington National Bank loans do not qualify under this program. A 10% down payment normally required. For a \$10,000 loan for 48 months, your payment would be \$247.20 with an APR of 8.65%, without an automatic deduction from a Huntington Banks of Michigan checking or savings account your payment would be \$248.38 with an APR of 8.9%. Subject to credit approval.

## DONATE YOUR CAR

Truck • Motorboat  
RV • Motorcycle

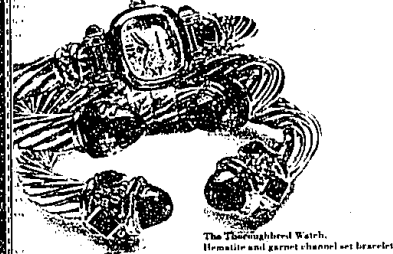
Free Towing • Fast Service • Tax Deductible  
WE MAKE IT EASY!

Call (810) 352-5272

28366 Franklin Rd.  
Southfield, Michigan 48034



## THE CABLE CLASSICS



DAVID YURMAN

Sidney Krandall & Sons  
FOURTH GENERATION JEWELERS

AT BIG BEAVER & 1-75 JUST EAST OF THE SOMERSET COLLECTION

755 West Big Beaver • Troy, Michigan 48064 • (810) 362-4500

Main Floor, Top of Troy Building  
Holiday Hours: Monday 10:30-9:00, Tuesday 10:30-9:00, Saturday 10:30-6:00  
12 months same as cash on all purchases with approved credit from 11/29/95 to 1/2/96