

## COMMUNITY MESSENGER

**Community Messenger features spiritual announcements from Oakland County religious institutions. Write: Community Messenger, c/o Beliefs & Values Editor, Observer & Eccentric Newspapers, 805 E. Maple, Birmingham, MI 48009. Our fax number is (810) 644-1314.**

**CHURCH DINNERS**  
Auburn Hills Presbyterian Church, 3456 Primary, Auburn Hills, is hosting a spaghetti dinner and talent show at 6 p.m. on Feb. 9. Proceeds benefit the youth group. The church is also holding an Ash Wednesday-Fish & Chips Dinner at 6 p.m. on Feb. 12, followed by an informal worship service at 6:45 p.m. The cost of the dinner is \$2. For information on either event, call (810) 852-3450.

**KOL AMI COURSES**  
Temple Kol Ami, 5085 Walnut Lake Road, West Bloomfield, will offer three new adult education courses. The True Story of Esther will prepare students for Purim. The class runs 8:30 to 9:30 p.m. Mondays, Feb. 24 to March 17. Comparative American-Jewish Law will explore the similarities and differences between the American legal system and halakha, traditional Jewish law. 7:30 to 8:30 p.m. Mondays during March. Reform Judaism and the End of Days will explore traditional and liberal interpretations regarding the Messiah. 8:30 p.m. Mondays, March 24 and March 31. For information, call Temple Kol Ami, (810) 661-0040.

**HOSPICE VOLUNTEERS**  
The Hospice of West Bloomfield, serving patients in Oakland County, needs volunteers to provide companionship, transportation, household and office help a few hours a month. Caring Hearts, a training program to help terminally ill patients and their families, begins on Tuesday, Feb. 4. For information, call (810) 539-0660.

**BIBLE STUDY**  
First United Methodist Church, 805 E. Maple, Birmingham, invites women to include Bible study in their new year by joining WOW! or WOW! P.M. for an in-depth study of the book of Genesis through group discussion and a lecture led by Leigh Hook. The group meets at 9:30 a.m. on Tuesdays, and at 7:30 p.m. on Thursdays. Child care is offered on Tuesday mornings. For information, call Betty Breedlove at (810) 646-9682.

**SUPPORT GROUP**  
The Survivor's Bereavement Support Group is held from 7:30 to 9 p.m. on the fourth Tuesday evening of each month, in the Meditation Lounge of Northbrook Presbyterian Church, located on the southwest corner of 14 Mile and Lahser in Beverly Hills. The survivor's bereavement group is an open and participative nondenominational, non-sectarian support group, facilitated by a licensed family therapist and bereavement counselor. The group is provided as a free community service of Northbrook Presbyterian Church. For information, call (810) 642-0200.

**SANCTUARY RENTAL**  
The new sanctuary at Birmingham Unitarian Church, Woodward and Lone Pine Road in Bloomfield Hills, is now available for public use as a performance space. Completed in March, 1996, the sanctuary seats 320, accommodates up to 20 instrumentalists and contains a well-maintained Steinway B grand piano. Performances can take place in two locations within the sanctuary, each providing excellent sight lines. Birmingham Unitarian Church has a long tradition of supporting the cultural organizations of metropolitan Detroit. Its congregation has welcomed outstanding performances for a number of years. The new sanctuary, with its fine acoustics and serene ambience, is a performance space worth considering. Reasonable rental rates are available. For information, call Carol Leo at (810) 647-2380.

**GENDER ROLES**  
Cong. B'nai Moshe, 6800 Drake, West Bloomfield, is offering "Let's Talk About Gender Roles in the Synagogue," a new adult Jewish study series beginning at 11 a.m. on Sunday, Feb. 9. Rabbi Elliot Pachter will present Talmudic and medieval sources, commentaries and responsa literature, including contemporary expositions on the subject by leading law authorities in the Conservative movement. Pre-registration for the free program is encouraged. For information,

call Rabbi Pachter at (810) 788-0600, or send e-mail to: cbminfo@bnaimoshes.org.

**GENDER ROLES**  
At 11 a.m. Sunday, Feb. 9, Cong. B'nai Moshe in West Bloomfield will launch a new adult study series called "Let's Talk About Gender Roles in the Synagogue." Rabbi Elliot Pachter will lead the series. There is no charge; all are welcome. A second session will be held at 11 a.m. Sunday, March 9, with additional dates to be announced. "Let's Talk About Gender Roles in the Synagogue"

will be a text-based discussion series, focusing on Talmudic and medieval sources, commentaries, and responsa literature, including contemporary expositions on the subject by leading law authorities in the Conservative movement. Pre-registration is requested. B'nai Moshe is located at 6800 Drake Road. For more information or to register, call Rabbi Elliot Pachter at the synagogue office (810) 788-0600.

**FAMILY FOCUS**  
At 10:30 a.m. Saturday, Feb. 22, Cong. B'nai Moshe in West Bloomfield will host an infor-

mal, participatory Shabbat service for kindergarten and first-grade students and their families, apart of the synagogue's "Tefillot Together" series. The service runs for about 35 minutes and takes place in the west foyer of the synagogue building while the main service goes on in the sanctuary. "Tefillot Together" features storytelling, songs and other age-appropriate activities to enhance the family Shabbat experience. Throughout the school year when LIFE (Learning is a Family Experience) classes are in session on Shabbat mornings, B'nai Moshe offers

"Tefillot Together" for a different grade level from K to 6. The next "Tefillot Together" program will be for second grade families and will take place on March 8. All interested families are invited regardless of affiliation. B'nai Moshe is located at 6800 Drake Road. For more information call Education Director Rita Abramson at (810) 788-0600.

**SACRED STUDY**  
Two West Bloomfield synagogues, Cong. Both Abraham-Hillel Moses and Cong. B'nai Moshe, will offer a text study session for interested adult

learners in honor of the new Hebrew month of Adar I, from 10:30 a.m. to noon Monday, Feb. 10. The session will be led by Ruth Bergman and will be held at Beth Abraham Hillel Moses, 5075 W. Maple, West Bloomfield. There is no charge. The topic will be "Where You Go, I Will Follow: The Book of Ruth, Family Loyalty and Becoming a Jew (Part 2)." New students are welcome to attend even if they missed the first half. All are welcome to participate. For more info or to register, leave a message for Ruth Bergman at (810) 861-6880 or Nancy Kaplan at (810) 788-0600.



**ANN ARBOR**  
**Apollo**  
2100 W. Stadium Blvd. at Liberty  
(313) 668-6100

**DEARBORN**  
**Krug**  
21531 Michigan Ave.  
Between Southfield and Telegraph  
(313) 221-8800

**DETROIT**  
**Bob Maxey**  
16901 Mack Ave. at Cadieux  
(313) 885-4000

**DETROIT**  
**Park Motor**  
16100 Woodward Ave.  
Opposite Palmer Park  
(313) 869-5000

**EASTLAND**  
**Bob Dusseau**  
11000 Woodward Ave.  
1 Block West of Orchard Lake Rd.  
(810) 474-3170

**GARDEN CITY**  
**Stu Evans**  
12000 Ford Rd.  
Just West of Merriman  
(313) 425-4300

**NOVI**  
**Varsity**  
49251 Grand River  
1-96 1 Block S. of Wixom Exit  
(810) 305-5300

**PLYMOUTH**  
**Hines Park**  
10601 Ann Arbor Rd. at I-275  
1-800-330-MERC

**ROCHESTER HILLS**  
**Crisman**  
1185 South Rochester Rd.  
Between Hamlin and Avon Rd.  
(810) 522-4200

**ROSEVILLE**  
**Arnold**  
29000 Gratiot  
At 12 Mile Road  
(810) 445-6000

**ROYAL OAK**  
**Diamond**  
221 N. Main St. at 11 Mile Road  
(810) 541-8830

**SOUTHFIELD**  
**Star**  
24350 W. 12 Mile Rd. at Telegraph  
(810) 334-4900

**SOUTHGATE**  
**Stu Evans**  
16800 Fort Street at Pennsylvania  
(313) 285-8800

**STERLING HEIGHTS**  
**Crest**  
36200 Van Dyke at I-5/12 Mile Rd.  
(810) 939-6600

**TROY**  
**Bob Borst**  
1950 West Maple  
Troy Motor Mall  
(810) 643-6600

**WATERBURY**  
**Mel Farr**  
4178 Highland Rd. (M-24)  
2 Miles West of Telegraph  
(810) 683-9500

**YPSILANTI**  
**Sesl**  
950 East Michigan  
9 Miles West of I-275  
(313) 482-7133

**LYNCH**  
**Mercury**

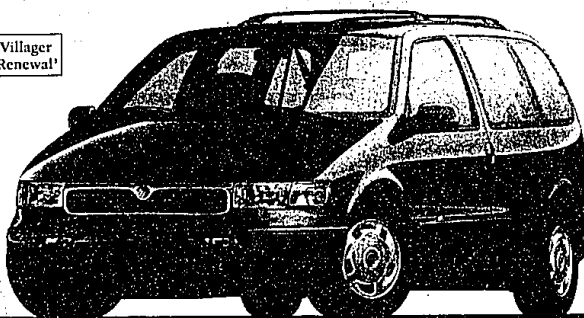
## At Your Metro Detroit Lincoln-Mercury Dealers

# Big Savings On Versatility & Capability.

**Standard Features:** • 3.0-liter OHC V6 engine • Dual air bags\* • Multi-point electronic fuel injection • Front-wheel drive • Tilt steering column • Power rack-and-pinion steering • Rear window washer/wiper • Solar tint glass • Electronic AM/FM stereo cassette • Front cornering lamps • Side window defogger • Childproof lock on sliding door • GS Preferred Equipment Package 692A\* • Power windows/locks • Dual power mirrors • 7-passenger seating • Luggage rack • 8-way power driver's seat • Aluminum wheels • Remote keyless entry • 4 captain's chairs • Rear seat heat/air conditioning controls

**\$279<sup>1</sup> Or \$1,000<sup>2</sup> Cash Back**  
On A Purchase Or  
**RED CARPET LEASE**  
Per Month, 24-Month Lease

\*500 Villager Lease Renewal!



1997 Mercury Villager GS

\*97 Villager GS with PEP 692A MSRP \$24,195 excluding title, tax and license fee. Lease payments based on average capitalized cost of 89.94% of MSRP for Villager for 24-month closed-end Ford Credit Red Carpet Lease purchased in the Detroit Region through 11/30/96. Some payments higher, some lower. See dealer for payment/terms. Lessee may have option to buy vehicle at lease end at price negotiated with dealer at signing. Lessee responsible for excess wear/tear and mileage over 24,000 at \$15/mile. Credit approval/insurability determined by Ford Credit. Actual security deposit will vary depending on taxes and other fees. For special lease terms and \$1,000 Lease Cash Rebate, take new retail delivery from dealer stock by 4/2/97. Total amount of monthly payments is \$6,000. See dealer for complete details. For \$1,000 cash back on a purchase of Red Carpet Lease of a 1997 Villager, take new retail delivery from dealer stock by 4/2/97. Customers eligible for \$500 RCL renewal incentive must terminate their new or used Villager lease between 1/4/97 and 4/2/97. A customer's Villager lease terminated early will qualify if it is terminated within the program dates. Customers who have previously terminated their Villager lease from 10/2/96 through 1/3/97 are also eligible if they Red Carpet Lease a '97 Villager within the program period. Offer ends 4/2/97. \*Excludes tax and other fees. Always wear your safety belt and secure children in the rear seat.

**Standard Features:** • Dual air bags\* • 5.0-liter V-8 engine • Sequential multi-port electronic fuel injection • Tilt steering wheel • CFC-free air conditioner • Solar tint glass • 100,000-mile tune-up interval\*\* • Illuminated entry system • 4-wheel disc anti-lock brakes • Preferred Equipment Package 655A: • Anti-theft alarm • Running boards • 6-way power sport bucket seats • Remote keyless entry

**\$349<sup>3</sup>**  
Per Month, 24-Month Lease

- All-wheel drive
- Standard V-8
- Running boards



1997 Mercury Mountaineer

See Your Metro Detroit Lincoln-Mercury Dealer Now.

\*97 AWD Mountaineer with PEP 655A MSRP \$34,000 excluding title, taxes and license fee. Lease payments based on average capitalized cost of 90.81% of MSRP for Mountaineer for 24-month closed-end Ford Credit Red Carpet Lease purchased in the Detroit Region through 11/30/96. Some payments higher, some lower. See dealer for payment/terms. Lessee may have option to buy vehicle at lease end at price negotiated with dealer at signing. Lessee responsible for excess wear/tear and mileage over 24,000 at \$15/mile. Credit approval/insurability determined by Ford Credit. Actual security deposit will vary depending on taxes and other fees. For special lease terms, take new retail delivery from dealer stock by 4/2/97. Total amount of monthly payments is \$8,376. See dealer for complete details. \*Excludes tax and other fees. Always wear your safety belt and secure children in the rear seat. \*\*Under normal driving conditions with routine fluid/filter changes.

Visit us on the Internet at <http://www.lincolnm Mercury.com/detroit>