

Candidates from page A7

Jim Agee
Also an unabashed liberal is state Rep. Jim Agee, 66, a product of Detroit public schools who became a teacher and retired as superintendent of Muskegon schools in 1992.
"I'm not running as a new Democrat. I'm running as an old Democrat," said the white-haired, three-term lawmaker who several years ago was among the finalists for state superintendent of public instruction.
"It will take our party down if we move and race to the center and right," Agee told delegates, denouncing Engler's push for charter schools, choice and vouchers.
"I'm not afraid to say 'organized labor.' Every man and woman should have the collective bargaining voice they deserve. They should not be displaced by replacement workers."
Agee said he will form an exploratory committee this week to test the gubernatorial waters.

Doug Ross
Once a Citizens Lobby liberal, Ross made a sharp turn to the center during his term as a state senator from Southfield where he learned to love small entrepreneurs.
"Our mission is to create practical opportunities for workers and low-income workers to get the skills they need," said the former assistant U.S. secretary of labor for employment and training.
Ross sees a future with "thousands of new, smaller plants" where workers in unsupervised teams operate computers that make customized products — "thinking, not lifting. The workers don't check their brains at the door."
Ross, 54, of West Bloomfield, sees Gov. Engler as being forced by the far right to turn against performance standards in public schools and forced by established

corporations to turn his back on entrepreneurs.
Ross has yet to formally announce but isn't coy. His literature says "Doug Ross for Governor."
Larry Owen
"The Republican party has been hijacked by extremists, and its moderates have been expelled," said Larry Owen, 52, a former mayor of East Lansing and former Michigan State University trustee.
Owen clearly is after the middle-of-the-road voters. In the second para-

graph of his 10-paragraph biography, he mentions working with Republican Gov. William Milliken (mental health code) and Democratic Gov. James Blanchard (Michigan Education Trust).
Owen's announcement on Feb. 4 was the source of the "sensible center" phrase that Berryman denounced.
Owen ran in the 1994 primary with the Michigan Education Association's support and finished second to Howard Wolpe, who had labor federation support.
The son of transplanted Kentuckians, Owen is a lawyer involved in "profitable ventures in commercial real estate, marketing and personal insurance." His list of endorsements includes House Speaker Curtis Hertel, Rep. Eileen DeHart of Westland and former Rep.

Maxine Berman of Southfield.
Ed Hamilton
"The only conservative Democrat for governor in 1998," he says, and so far he's right.
Hamilton, 64, of Troy, lost a 1994 race for state representative (against Shirley Johnson) and was the 1996 Democratic sacrificial lamb for Oakland County executive (against L. Brooks Patterson).
"I will support the impending ratification of the balanced budget (U.S.) constitutional amendment, term limits, immediate safe streets and safe schools for teachers and students. . . no gas tax increase, state income tax reduction. . . the second amendment right to bear arms," he said.

Others
Other potential candidates may include: former U.S. Sen. Don Riegle, 69, of Troy; Rep. John Freeman, 39, of Madison Heights; Rep. Karen Willard, 37, of Algonue.



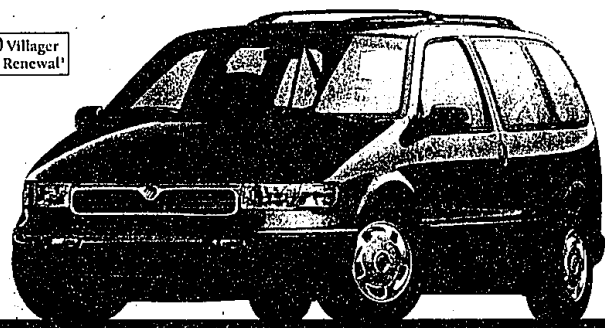
At Your Metro Detroit Lincoln-Mercury Dealers

Big Savings On Versatility & Capability.

Standard Features: • 3.0-liter OHC V-6 engine • Dual air bags • Multi-point electronic fuel injection • Front-wheel drive • Tilt steering column • Power rack-and-pinion steering • Rear window washer/wiper • Solar tint glass • Electronic AM/FM stereo cassette • Front cornering lamps • Side window defoggers • Childproof lock on sliding door • GS Preferred Equipment Package 692A: • Power windows/locks • Dual power mirrors • 7-passenger seating • Luggage rack • 8-way power driver's seat • Aluminum wheels • Remote keyless entry • 4 captain's chairs • Rear seat heat/air-conditioning controls

\$279¹ or **\$1,000²** Cash Back
On A Purchase Or
RED CARPET LEASE

'500 Villager Lease Renewal'



1997 Mercury Villager GS

24-Month/24,000-Mile Red Carpet Lease
First Month's Payment ¹
Down Payment ²
Refundable Security Deposit ³
Cash Due at Signing ⁴

¹'97 Villager GS with PEP 692A MSRP \$24,195 excluding title, tax and license fee. Lease payments based on average capitalized cost of 89.94% of MSRP for Villager for 24-month closed-end Ford Credit Red Carpet Leases purchased in the Detroit Region through 11/30/96. Some payments higher, some lower. See dealer for payment/terms. Lessee may have option to buy vehicle at low end of price negotiated with dealer at signing. Lessee responsible for excess wear/tear and mileage over 24,000 at \$15/mile. Credit approval/insurability determined by Ford Credit. Actual security deposit will vary depending on taxes and other fees. For special lease terms and \$1,000 Lease Cash Rebate, take new retail delivery from dealer stock by 4/2/97. Total amount of monthly payments is \$6,696. See dealer for complete details. For \$1,000 cash back on a purchase or Red Carpet Lease of a 1997 Villager, take new retail delivery from dealer stock by 4/2/97. Customers eligible for \$500 RCL renewal incentive must terminate their new or used Villager lease between 1/4/97 and 4/2/97. A customer's Villager lease terminated early will qualify if it is terminated within the program dates. Customers who have previously terminated their Villager lease from 10/2/96 through 1/3/97 are also eligible if they Red Carpet Lease a '97 Villager within the program period. Offer ends 4/2/97. *Excludes tax and other fees. Always wear your safety belt and secure children in the rear seat.

Standard Features: • Dual air bags • 5.0-liter V-8 engine • Sequential multi-port electronic fuel injection • Tilt steering wheel • CFC-free air conditioner • Solar tint glass • 100,000-mile tune-up interval** • Illuminated entry system • 4-wheel disc anti-lock brakes Preferred Equipment Package 655A: • Anti-theft alarm • Running boards • 6-way power sport bucket seats • Remote keyless entry

\$349³
Per Month, 24-Month Lease

- All-wheel drive
- Standard V-8
- Running boards



1997 Mercury Mountaineer

See Your Metro Detroit Lincoln-Mercury Dealer Now.

24-Month/24,000-Mile Red Carpet Lease
First Month's Payment ¹
Down Payment ²
Refundable Security Deposit ³
Cash Due at Signing ⁴

¹'97 AWD Mountaineer with PEP 655A MSRP \$31,080 excluding title, taxes and license fee. Lease payments based on average capitalized cost of 90.81% of MSRP for Mountaineer for 24-month closed-end Ford Credit Red Carpet Leases purchased in the Detroit Region through 11/30/96. Some payments higher, some lower. See dealer for payment/terms. Lessee may have option to buy vehicle at low end of price negotiated with dealer at signing. Lessee responsible for excess wear/tear and mileage over 24,000 at \$15/mile. Credit approval/insurability determined by Ford Credit. Actual security deposits will vary depending on taxes and other fees. For special lease terms, take new retail delivery from dealer stock by 4/2/97. Total amount of monthly payments is \$8,376. See dealer for complete details. *Excludes tax and other fees. Always wear your safety belt and secure children in the rear seat. **Under normal driving conditions with routine fluid/filter changes.

Visit us on the Internet at <http://www.lincolnmcury.com/detroit>

Insure Your Home and Car With Us and Save \$\$\$.

When you insure your home and car with Auto-Owners, we'll save you money with our special multi-policy discounts.



Cliff Roberts
Frank Hand
Insurance Agency
33930 Eight Mile Rd.
Farmington • (810) 478-1177
Auto-Owners Insurance
Life Home Car Business
The No Frills Agency



Still Searching For A Cure For Dryness?

Eliminate persistent, harmful dry air in your home or condo and start enjoying total indoor air comfort with an Aprilaire Whole House Humidifier.
The controlled moisture added by the soft, fine-mist Aprilaire system cools baby skin, soothes dry skin, eases allergies and other irritations. At the same time, it protects your home and furnishings from the damage caused by dry air.
We know the proven benefits of an Aprilaire Whole House Humidifier into your home. And remember, there's an Aprilaire Whole House Humidifier for every type of heating system.
For installation or more information, contact us today.
Aprilaire
The Best Cure For Dryness
DANIELSON
HVAC & HEATING
(810) 477-3820

ANN ARBOR
Apollo
2100 W. Stadium Blvd. at Liberty
(313) 668-6100

DEARBORN
Krug
21531 Michigan Ave.
Between Southfield and Telegraph
(313) 274-8800

DETROIT
Bob Maxey
16901 Mack Ave. at Cadieux
(313) 885-4000

DETROIT
Park Motor
18100 Woodward Ave.
Opposite Palmer Park
(313) 869-5000

FARMINGTON
Bob Dusseau
31625 Grand River Ave.
1 Block West of Orchard Lake Rd.
(810) 474-3170

GARDEN CITY
Stu Evans
32000 Ford Rd.
Just West of Merriman
(313) 425-4300

NOVI
Varsity
49251 Grand River
1-96 1 Block S. of Wixom Exit
(810) 305-5300

PLYMOUTH
Hines Park
40601 Ann Arbor Rd. at I-275
1-800-550-MERC

ROCHESTER HILLS
Crissman
1185 South Rochester Rd.
Between Hamilton and Avon Rd.
(810) 552-4200

ROSELAND
Arnold
29000 Gratiot
At 12 Mile Road
(810) 445-6000

ROYAL OAK
Diamond
221 N. Main St. at 11 Mile Road
(810) 341-8830

SOUTHFIELD
Star
24350 W. 12 Mile Rd. at Telegraph
(810) 354-4900

SOUTHGATE
Stu Evans
16800 Fort Street at Pennsylvania
(313) 285-8800

STERLING HEIGHTS
Crest
36300 Van Dyke at 15 1/2 Mile Rd.
(810) 939-6000

TROY
Bob Borst
1950 West Maple
Troy Motor Mall
(810) 643-6600

WATERFORD
Mel Farr
4178 Highland Rd. (M-59)
2 Miles West of Telegraph
(810) 883-9500

YPSILANTI
Sesi
950 East Michigan
9 Miles West of I-275
(313) 483-7133

